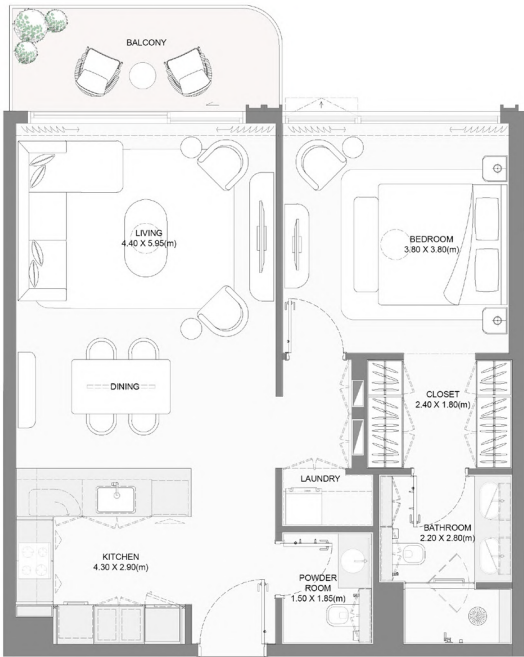
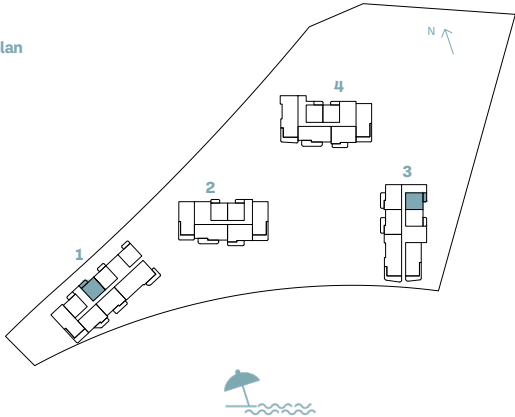


1-BEDROOM

TYPE A

BUILDING	UNIT NUMBER	Suite Area NIA		Balcony Area		Total Area NSA	
		SQM	SQFT	SQM	SQFT	SQM	SQFT
1	107	73.34	789.43	8.18	88.05	81.52	877.47
1	207 307 407 505 605 704 803	73.34	789.43	8.19	88.16	81.53	877.58
3	205 305 405 505 605 703	73.33	789.32	8.20	88.26	81.53	877.58

Key plan



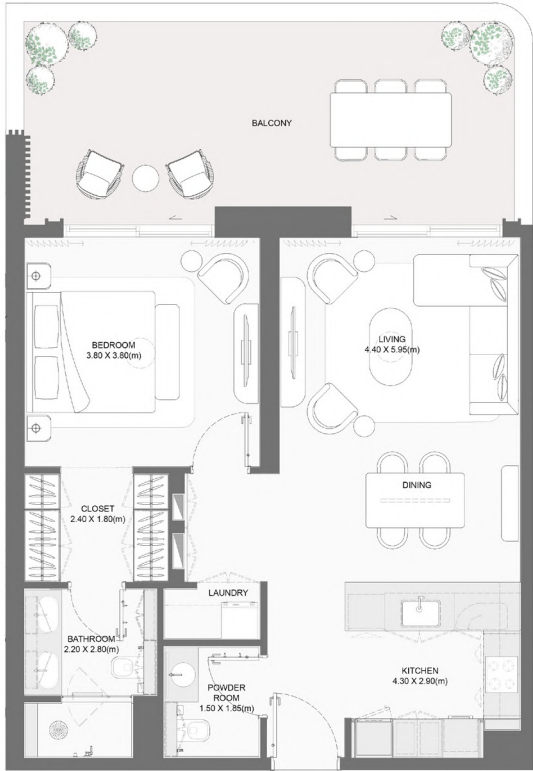
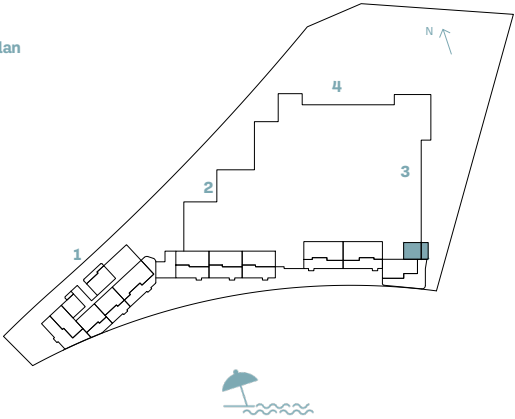
Disclaimer: All measurements, dimensions, coordinates, and drawings provided as the Floor Plans in the literature are approximate and provided only for the purpose of marketing, illustration, information, and general guidance, as these drawings are not to scale. All the rooms, sizes, locations, orientations, dimensions, fixtures, fittings, finishes, and specifications (including materials, placement, size of rooms, windows, doors, balconies, and built-in wardrobes) provided in the floor plans may vary as the same have been taken from concept designs prior to the actual development/construction. Therefore, their accuracy in relation to the completed construction cannot be confirmed. We make no guarantee, warranty, or representation regarding the accuracy and completeness of the floor plan information, as changes may occur during the development process without notice. Always refer to the latest IFC design available in the sales office for the most accurate representation of all construction details.

1-BEDROOM

TYPE B

BUILDING	UNIT NUMBER	Suite Area NIA		Balcony Area		Total Area NSA	
		SQM	SQFT	SQM	SQFT	SQM	SQFT
3	G01	73.56	791.79	29.60	318.61	103.16	1110.40

Key plan



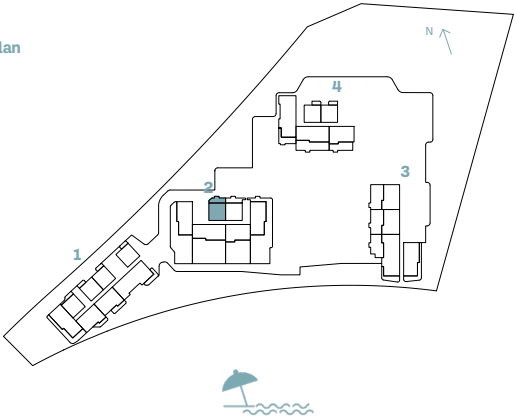
Disclaimer: All measurements, dimensions, coordinates, and drawings provided as the Floor Plans in the literature are approximate and provided only for the purpose of marketing, illustration, information, and general guidance, as these drawings are not to scale. All the rooms, sizes, locations, orientations, dimensions, fixtures, fittings, finishes, and specifications (including materials, placement, size of rooms, windows, doors, balconies, and built-in wardrobes) provided in the floor plans may vary as the same have been taken from concept designs prior to the actual development/construction. Therefore, their accuracy in relation to the completed construction cannot be confirmed. We make no guarantee, warranty, or representation regarding the accuracy and completeness of the floor plan information, as changes may occur during the development process without notice. Always refer to the latest IFC design available in the sales office for the most accurate representation of all construction details.

1-BEDROOM

TYPE C

BUILDING	UNIT NUMBER	Suite Area NIA		Balcony Area		Total Area NSA	
		SQM	SQFT	SQM	SQFT	SQM	SQFT
2	101	73.57	791.90	21.47	231.10	95.04	1023.00

Key plan



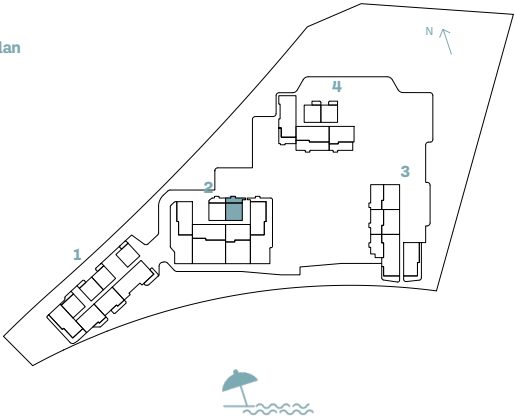
Disclaimer: All measurements, dimensions, coordinates, and drawings provided as the Floor Plans in the literature are approximate and provided only for the purpose of marketing, illustration, information, and general guidance, as these drawings are not to scale. All the rooms, sizes, locations, orientations, dimensions, fixtures, fittings, finishes, and specifications (including materials, placement, size of rooms, windows, doors, balconies, and built-in wardrobes) provided in the floor plans may vary as the same have been taken from concept designs prior to the actual development/construction. Therefore, their accuracy in relation to the completed construction cannot be confirmed. We make no guarantee, warranty, or representation regarding the accuracy and completeness of the floor plan information, as changes may occur during the development process without notice. Always refer to the latest IFC design available in the sales office for the most accurate representation of all construction details.

1-BEDROOM

TYPE D

BUILDING	UNIT NUMBER	Suite Area NIA		Balcony Area		Total Area NSA	
		SQM	SQFT	SQM	SQFT	SQM	SQFT
2	102	73.58	792.01	23.92	257.47	97.50	1049.48

Key plan



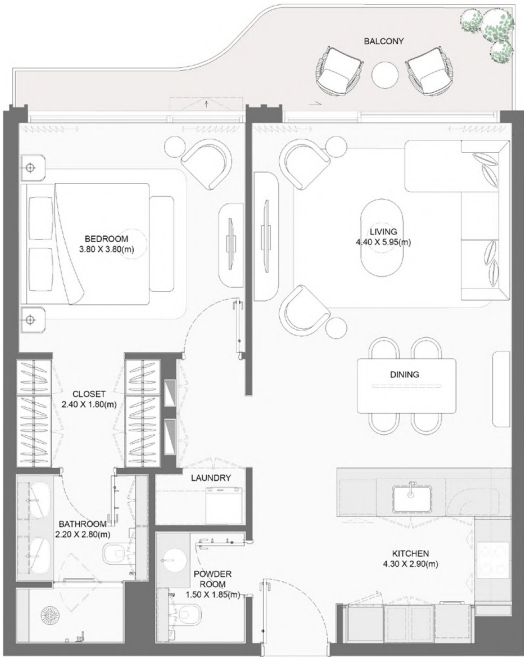
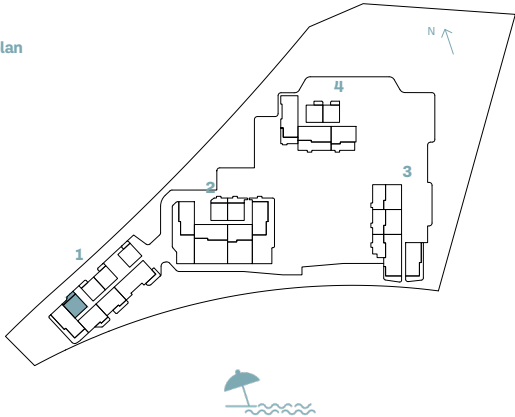
Disclaimer: All measurements, dimensions, coordinates, and drawings provided as the Floor Plans in the literature are approximate and provided only for the purpose of marketing, illustration, information, and general guidance, as these drawings are not to scale. All the rooms, sizes, locations, orientations, dimensions, fixtures, fittings, finishes, and specifications (including materials, placement, size of rooms, windows, doors, balconies, and built-in wardrobes) provided in the floor plans may vary as the same have been taken from concept designs prior the actual development/construction. Therefore, their accuracy in relation to the completed construction cannot be confirmed. We make no guarantee, warranty, or representation regarding the accuracy and completeness of the floor plan information, as changes may occur during the development process without notice. Always refer to the latest IFC design available in the sales office for the most accurate representation of all construction details.

1-BEDROOM

TYPE E

BUILDING	UNIT NUMBER	Suite Area NIA		Balcony Area		Total Area NSA	
		SQM	SQFT	SQM	SQFT	SQM	SQFT
1	106	73.38	789.86	11.11	119.59	84.49	909.44

Key plan



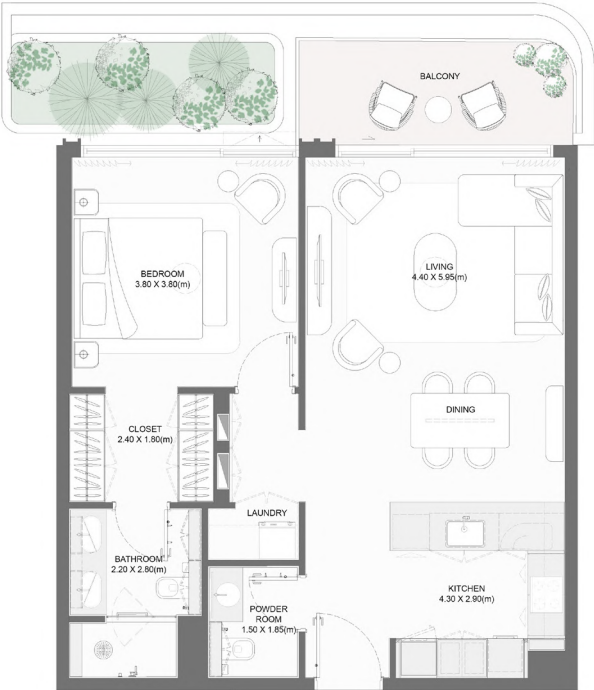
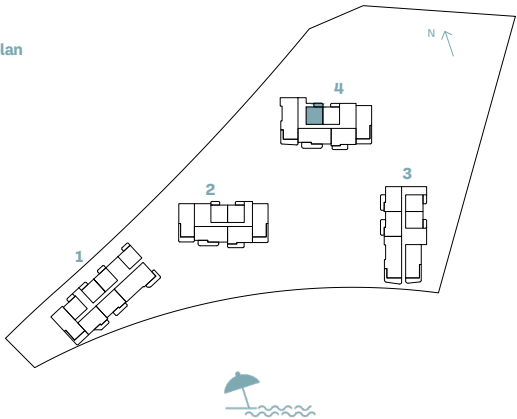
Disclaimer: All measurements, dimensions, coordinates, and drawings provided as the Floor Plans in the literature are approximate and provided only for the purpose of marketing, illustration, information, and general guidance, as these drawings are not to scale. All the rooms, sizes, locations, orientations, dimensions, fixtures, fittings, finishes, and specifications (including materials, placement, size of rooms, windows, doors, balconies, and built-in wardrobes) provided in the floor plans may vary as the same have been taken from concept designs prior the actual development/construction. Therefore, their accuracy in relation to the completed construction cannot be confirmed. We make no guarantee, warranty, or representation regarding the accuracy and completeness of the floor plan information, as changes may occur during the development process without notice. Always refer to the latest IFC design available in the sales office for the most accurate representation of all construction details.

1-BEDROOM

TYPE F

BUILDING	UNIT NUMBER	Suite Area NIA		Balcony Area		Total Area NSA	
		SQM	SQFT	SQM	SQFT	SQM	SQFT
4	205 305 405 505 605 705 805 905 1005 1105 1205 1305 1405 1505 1605 1705 1805 1904 2002	73.38	789.86	8.36	89.99	81.74	879.84
4	104	73.38	789.86	8.60	92.57	81.98	882.43

Key plan



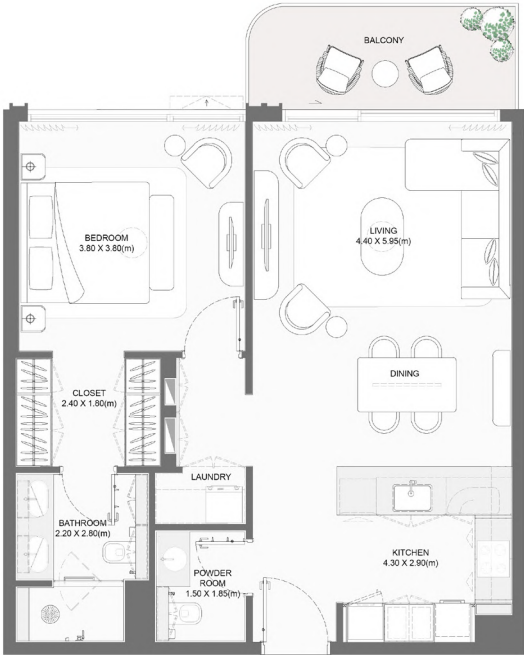
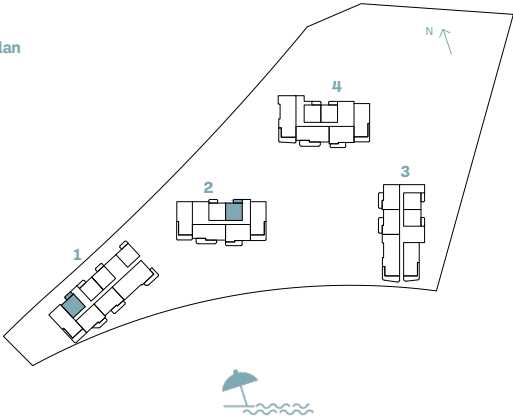
Disclaimer: All measurements, dimensions, coordinates, and drawings provided as the Floor Plans in the literature are approximate and provided only for the purpose of marketing, illustration, information, and general guidance, as these drawings are not to scale. All the rooms, sizes, locations, orientations, dimensions, fixtures, fittings, finishes, and specifications (including materials, placement, size of rooms, windows, doors, balconies, and built-in wardrobes) provided in the floor plans may vary as the same have been taken from concept designs prior to the actual development/construction. Therefore, their accuracy in relation to the completed construction cannot be confirmed. We make no guarantee, warranty, or representation regarding the accuracy and completeness of the floor plan information, as changes may occur during the development process without notice. Always refer to the latest IFC design available in the sales office for the most accurate representation of all construction details.

1-BEDROOM

TYPE G

BUILDING	UNIT NUMBER	Suite Area NIA		Balcony Area		Total Area NSA	
		SQM	SQFT	SQM	SQFT	SQM	SQFT
1	G05	73.34	789.43	7.54	81.16	80.88	870.59
2	202 302 402 502 602 702 802 902 1002 1102 1202 1302	73.34	789.43	8.19	88.16	81.53	877.58
1	206 306 406	73.38	789.86	7.54	81.16	80.92	871.02

Key plan



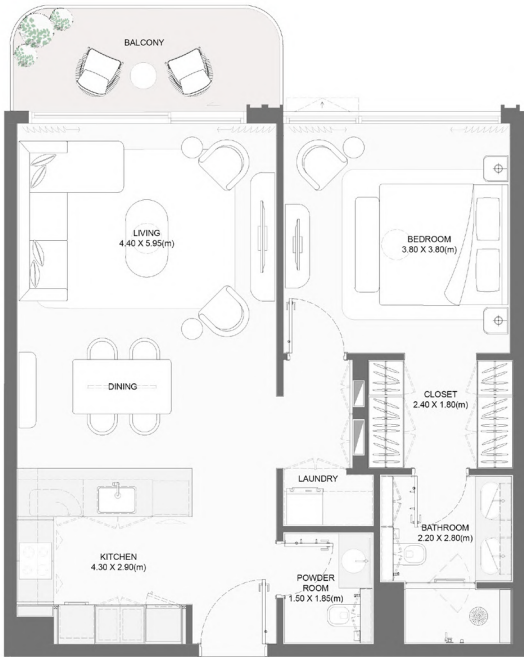
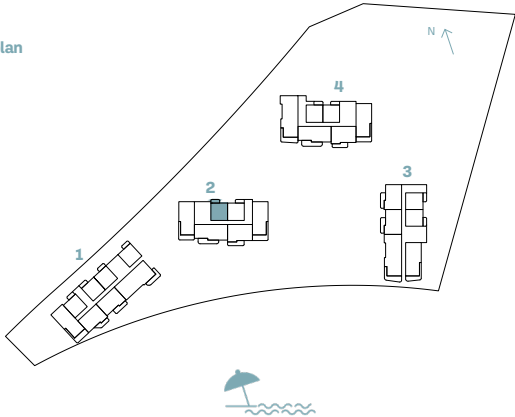
Disclaimer: All measurements, dimensions, coordinates, and drawings provided as the Floor Plans in the literature are approximate and provided only for the purpose of marketing, illustration, information, and general guidance, as these drawings are not to scale. All the rooms, sizes, locations, orientations, dimensions, fixtures, fittings, finishes, and specifications (including materials, placement, size of rooms, windows, doors, balconies, and built-in wardrobes) provided in the floor plans may vary as the same have been taken from concept designs prior the actual development/construction. Therefore, their accuracy in relation to the completed construction cannot be confirmed. We make no guarantee, warranty, or representation regarding the accuracy and completeness of the floor plan information, as changes may occur during the development process without notice. Always refer to the latest IFC design available in the sales office for the most accurate representation of all construction details.

1-BEDROOM

TYPE H

BUILDING	UNIT NUMBER	Suite Area NIA		Balcony Area		Total Area NSA	
		SQM	SQFT	SQM	SQFT	SQM	SQFT
2	201 301 401 501 601 701 801 901 1001 1101 1201 1301	73.34	789.43	7.97	85.79	81.31	875.21

Key plan



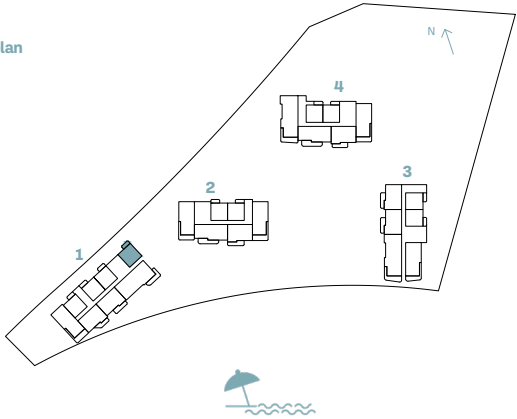
Disclaimer: All measurements, dimensions, coordinates, and drawings provided as the Floor Plans in the literature are approximate and provided only for the purpose of marketing, illustration, information, and general guidance, as these drawings are not to scale. All the rooms, sizes, locations, orientations, dimensions, fixtures, fittings, finishes, and specifications (including materials, placement, size of rooms, windows, doors, balconies, and built-in wardrobes) provided in the floor plans may vary as the same have been taken from concept designs prior the actual development/construction. Therefore, their accuracy in relation to the completed construction cannot be confirmed. We make no guarantee, warranty, or representation regarding the accuracy and completeness of the floor plan information, as changes may occur during the development process without notice. Always refer to the latest IFC design available in the sales office for the most accurate representation of all construction details.

1-BEDROOM

TYPE I

BUILDING	UNIT NUMBER	Suite Area NIA		Balcony Area		Total Area NSA	
		SQM	SQFT	SQM	SQFT	SQM	SQFT
1	201 301 401 501 601 701 801	73.31	789.10	7.98	85.90	81.29	875.00
1	101	73.31	789.10	8.05	86.65	81.36	875.75

Key plan



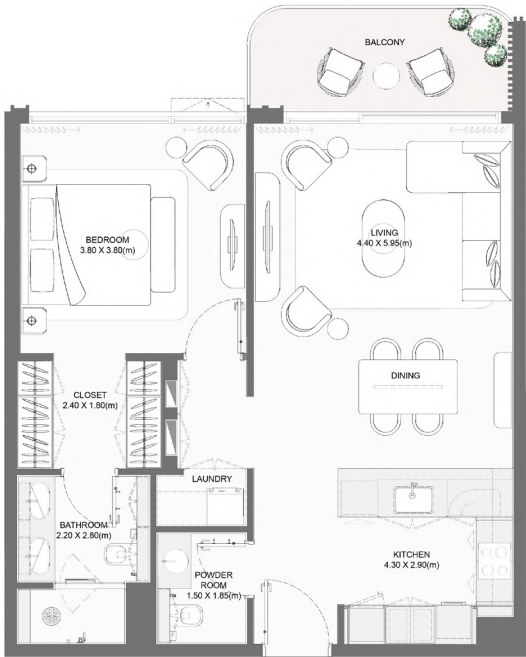
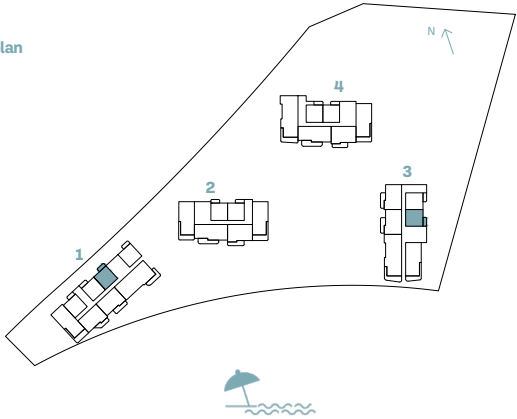
Disclaimer: All measurements, dimensions, coordinates, and drawings provided as the Floor Plans in the literature are approximate and provided only for the purpose of marketing, illustration, information, and general guidance, as these drawings are not to scale. All the rooms, sizes, locations, orientations, dimensions, fixtures, fittings, finishes, and specifications (including materials, placement, size of rooms, windows, doors, balconies, and built-in wardrobes) provided in the floor plans may vary as the same have been taken from concept designs prior the actual development/construction. Therefore, their accuracy in relation to the completed construction cannot be confirmed. We make no guarantee, warranty, or representation regarding the accuracy and completeness of the floor plan information, as changes may occur during the development process without notice. Always refer to the latest IFC design available in the sales office for the most accurate representation of all construction details.

1-BEDROOM

TYPE J

BUILDING	UNIT NUMBER	Suite Area NIA		Balcony Area		Total Area NSA	
		SQM	SQFT	SQM	SQFT	SQM	SQFT
1	108	73.34	789.43	7.78	83.74	81.12	873.17
3	206 306 406 506 606 704	73.34	789.43	7.96	85.68	81.30	875.11
1	208 308 408 506 606 705 804	73.34	789.43	7.98	85.90	81.32	875.32

Key plan



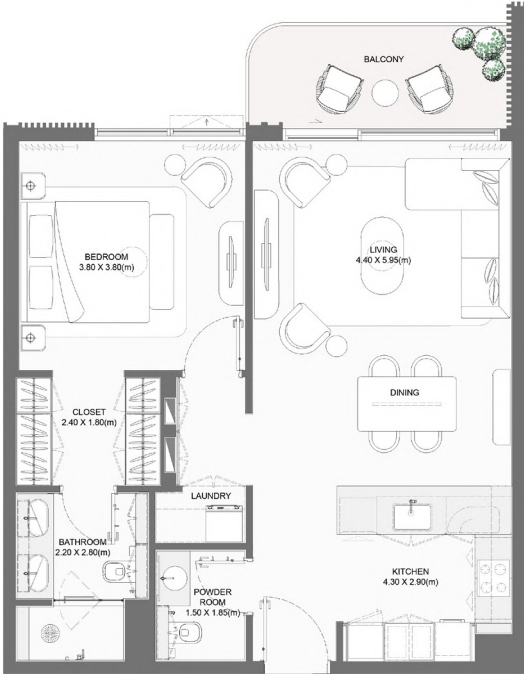
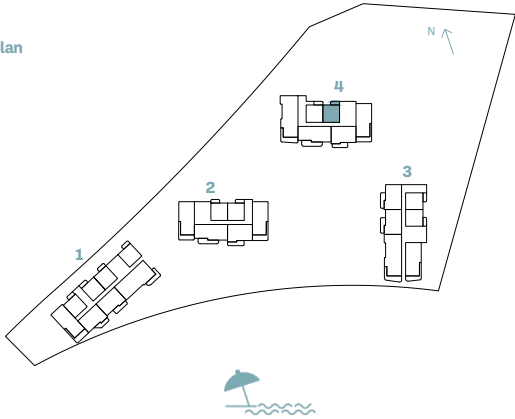
Disclaimer: All measurements, dimensions, coordinates, and drawings provided as the Floor Plans in the literature are approximate and provided only for the purpose of marketing, illustration, information, and general guidance, as these drawings are not to scale. All the rooms, sizes, locations, orientations, dimensions, fixtures, fittings, finishes, and specifications (including materials, placement, size of rooms, windows, doors, balconies, and built-in wardrobes) provided in the floor plans may vary as the same have been taken from concept designs prior the actual development/construction. Therefore, their accuracy in relation to the completed construction cannot be confirmed. We make no guarantee, warranty, or representation regarding the accuracy and completeness of the floor plan information, as changes may occur during the development process without notice. Always refer to the latest IFC design available in the sales office for the most accurate representation of all construction details.

1-BEDROOM

TYPE K

BUILDING	UNIT NUMBER	Suite Area NIA		Balcony Area		Total Area NSA	
		SQM	SQFT	SQM	SQFT	SQM	SQFT
4	206 306 406 506 606 706 806 906 1006 1106 1206 1306 1406 1506 1606 1706 1806 1905 2003	73.72	793.52	8.16	87.83	81.88	881.35
	105	73.72	793.52	8.62	92.78	82.34	886.30

Key plan



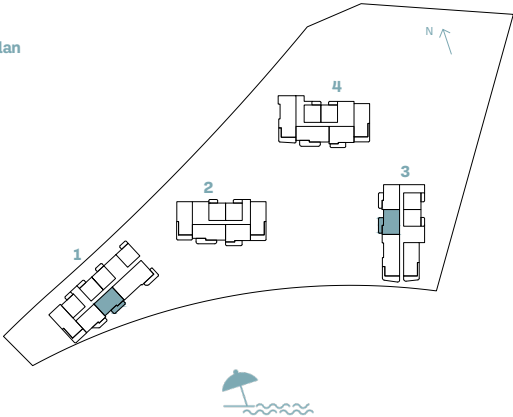
Disclaimer: All measurements, dimensions, coordinates, and drawings provided as the Floor Plans in the literature are approximate and provided only for the purpose of marketing, illustration, information, and general guidance, as these drawings are not to scale. All the rooms, sizes, locations, orientations, dimensions, fixtures, fittings, finishes, and specifications (including materials, placement, size of rooms, windows, doors, balconies, and built-in wardrobes) provided in the floor plans may vary as the same have been taken from concept designs prior to the actual development/construction. Therefore, their accuracy in relation to the completed construction cannot be confirmed. We make no guarantee, warranty, or representation regarding the accuracy and completeness of the floor plan information, as changes may occur during the development process without notice. Always refer to the latest IFC design available in the sales office for the most accurate representation of all construction details.

2-BEDROOM

TYPE A

BUILDING	UNIT NUMBER	Suite Area NIA		Balcony Area		Total Area NSA	
		SQM	SQFT	SQM	SQFT	SQM	SQFT
3	203 303 403 503 603 701	103.82	1117.51	17.45	187.83	121.27	1305.34
1	103 203 303 403 503 603 703	103.82	1117.51	17.66	190.09	121.48	1307.60

Key plan



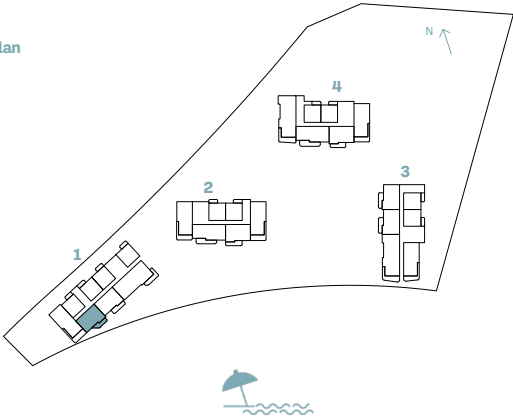
Disclaimer: All measurements, dimensions, coordinates, and drawings provided as the Floor Plans in the literature are approximate and provided only for the purpose of marketing, illustration, information, and general guidance, as these drawings are not to scale. All the rooms, sizes, locations, orientations, dimensions, fixtures, fittings, finishes, and specifications (including materials, placement, size of rooms, windows, doors, balconies, and built-in wardrobes) provided in the floor plans may vary as the same have been taken from concept designs prior the actual development/construction. Therefore, their accuracy in relation to the completed construction cannot be confirmed. We make no guarantee, warranty, or representation regarding the accuracy and completeness of the floor plan information, as changes may occur during the development process without notice. Always refer to the latest IFC design available in the sales office for the most accurate representation of all construction details.

2-BEDROOM

TYPE B

BUILDING	UNIT NUMBER	Suite Area NIA		Balcony Area		Total Area NSA	
		SQM	SQFT	SQM	SQFT	SQM	SQFT
1	104	103.76	1116.86	15.17	163.29	118.93	1280.15
1	204 304 404	103.76	1116.86	15.42	165.98	119.18	1282.84

Key plan



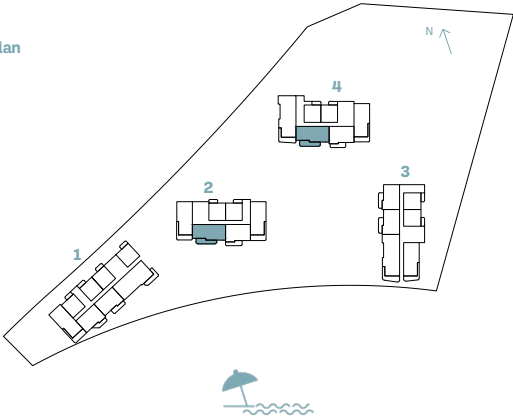
Disclaimer: All measurements, dimensions, coordinates, and drawings provided as the Floor Plans in the literature are approximate and provided only for the purpose of marketing, illustration, information, and general guidance, as these drawings are not to scale. All the rooms, sizes, locations, orientations, dimensions, fixtures, fittings, finishes, and specifications (including materials, placement, size of rooms, windows, doors, balconies, and built-in wardrobes) provided in the floor plans may vary as the same have been taken from concept designs prior the actual development/construction. Therefore, their accuracy in relation to the completed construction cannot be confirmed. We make no guarantee, warranty, or representation regarding the accuracy and completeness of the floor plan information, as changes may occur during the development process without notice. Always refer to the latest IFC design available in the sales office for the most accurate representation of all construction details.

2-BEDROOM

TYPE C

BUILDING	UNIT NUMBER	Suite Area NIA		Balcony Area		Total Area NSA	
		SQM	SQFT	SQM	SQFT	SQM	SQFT
2	205 305 405 505 605 705 805 905 1005 1105 1205 1304	124.95	1344.95	26.68	287.18	151.63	1632.13
4	403 503 603 703 803 903 1103 1203 1303 1403 1503 1603 1703 1803 1902	124.97	1345.17	26.68	287.18	151.65	1632.35
4	203 303 1003	124.89	1344.30	26.68	287.18	151.57	1631.49

Key plan



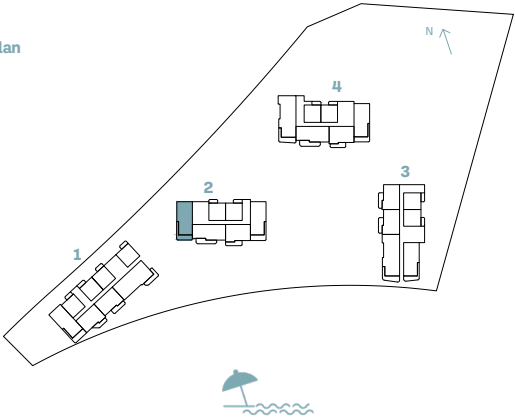
Disclaimer: All measurements, dimensions, coordinates, and drawings provided as the Floor Plans in the literature are approximate and provided only for the purpose of marketing, illustration, information, and general guidance, as these drawings are not to scale. All the rooms, sizes, locations, orientations, dimensions, fixtures, fittings, finishes, and specifications (including materials, placement, size of rooms, windows, doors, balconies, and built-in wardrobes) provided in the floor plans may vary as the same have been taken from concept designs prior to the actual development/construction. Therefore, their accuracy in relation to the completed construction cannot be confirmed. We make no guarantee, warranty, or representation regarding the accuracy and completeness of the floor plan information, as changes may occur during the development process without notice. Always refer to the latest IFC design available in the sales office for the most accurate representation of all construction details.

2-BEDROOM

TYPE D

BUILDING	UNIT NUMBER	Suite Area NIA		Balcony Area		Total Area NSA	
		SQM	SQFT	SQM	SQFT	SQM	SQFT
2	206 306 406 506 606 706 806 906 1006 1106 1206 1305	125.11	1346.67	26.92	289.76	152.03	1636.44

Key plan



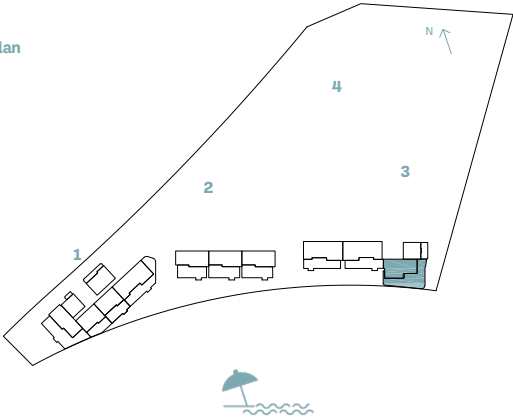
Disclaimer: All measurements, dimensions, coordinates, and drawings provided as the Floor Plans in the literature are approximate and provided only for the purpose of marketing, illustration, information, and general guidance, as these drawings are not to scale. All the rooms, sizes, locations, orientations, dimensions, fixtures, fittings, finishes, and specifications (including materials, placement, size of rooms, windows, doors, balconies, and built-in wardrobes) provided in the floor plans may vary as the same have been taken from concept designs prior to the actual development/construction. Therefore, their accuracy in relation to the completed construction cannot be confirmed. We make no guarantee, warranty, or representation regarding the accuracy and completeness of the floor plan information, as changes may occur during the development process without notice. Always refer to the latest IFC design available in the sales office for the most accurate representation of all construction details.

2-BEDROOM

TYPE E

BUILDING	UNIT NUMBER	Suite Area NIA		Balcony Area		Total Area NSA	
		SQM	SQFT	SQM	SQFT	SQM	SQFT
3	G02	142.86	1537.73	154.18	1659.58	297.04	3197.31

Key plan



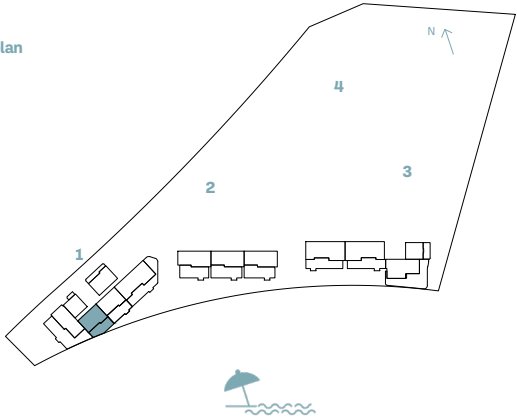
Disclaimer: All measurements, dimensions, coordinates, and drawings provided as the Floor Plans in the literature are approximate and provided only for the purpose of marketing, illustration, information, and general guidance, as these drawings are not to scale. All the rooms, sizes, locations, orientations, dimensions, fixtures, fittings, finishes, and specifications (including materials, placement, size of rooms, windows, doors, balconies, and built-in wardrobes) provided in the floor plans may vary as the same have been taken from concept designs prior to the actual development/construction. Therefore, their accuracy in relation to the completed construction cannot be confirmed. We make no guarantee, warranty, or representation regarding the accuracy and completeness of the floor plan information, as changes may occur during the development process without notice. Always refer to the latest IFC design available in the sales office for the most accurate representation of all construction details.

2-BEDROOM

TYPE F

BUILDING	UNIT NUMBER	Suite Area NIA		Balcony Area		Total Area NSA	
		SQM	SQFT	SQM	SQFT	SQM	SQFT
1	G03	103.91	1118.48	58.78	632.70	162.69	1751.18

Key plan



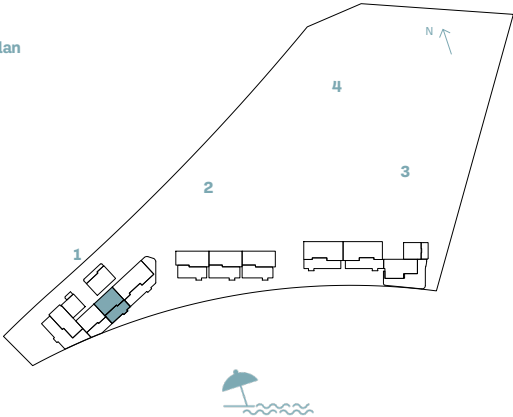
Disclaimer: All measurements, dimensions, coordinates, and drawings provided as the Floor Plans in the literature are approximate and provided only for the purpose of marketing, illustration, information, and general guidance, as these drawings are not to scale. All the rooms, sizes, locations, orientations, dimensions, fixtures, fittings, finishes, and specifications (including materials, placement, size of rooms, windows, doors, balconies, and built-in wardrobes) provided in the floor plans may vary as the same have been taken from concept designs prior the actual development/construction. Therefore, their accuracy in relation to the completed construction cannot be confirmed. We make no guarantee, warranty, or representation regarding the accuracy and completeness of the floor plan information, as changes may occur during the development process without notice. Always refer to the latest IFC design available in the sales office for the most accurate representation of all construction details.

2-BEDROOM

TYPE G

BUILDING	UNIT NUMBER	Suite Area NIA		Balcony Area		Total Area NSA	
		SQM	SQFT	SQM	SQFT	SQM	SQFT
1	G02	103.93	1118.69	66.66	717.52	170.59	1836.22

Key plan



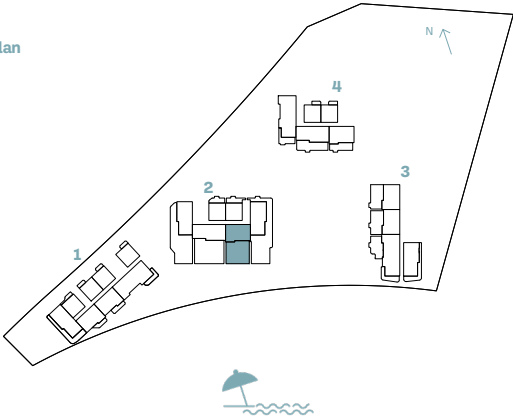
Disclaimer: All measurements, dimensions, coordinates, and drawings provided as the Floor Plans in the literature are approximate and provided only for the purpose of marketing, illustration, information, and general guidance, as these drawings are not to scale. All the rooms, sizes, locations, orientations, dimensions, fixtures, fittings, finishes, and specifications (including materials, placement, size of rooms, windows, doors, balconies, and built-in wardrobes) provided in the floor plans may vary as the same have been taken from concept designs prior to the actual development/construction. Therefore, their accuracy in relation to the completed construction cannot be confirmed. We make no guarantee, warranty, or representation regarding the accuracy and completeness of the floor plan information, as changes may occur during the development process without notice. Always refer to the latest IFC design available in the sales office for the most accurate representation of all construction details.

2-BEDROOM

TYPE H

BUILDING	UNIT NUMBER	Suite Area NIA		Balcony Area		Total Area NSA	
		SQM	SQFT	SQM	SQFT	SQM	SQFT
2	104	103.96	1119.02	134.99	1453.02	238.95	2572.04

Key plan



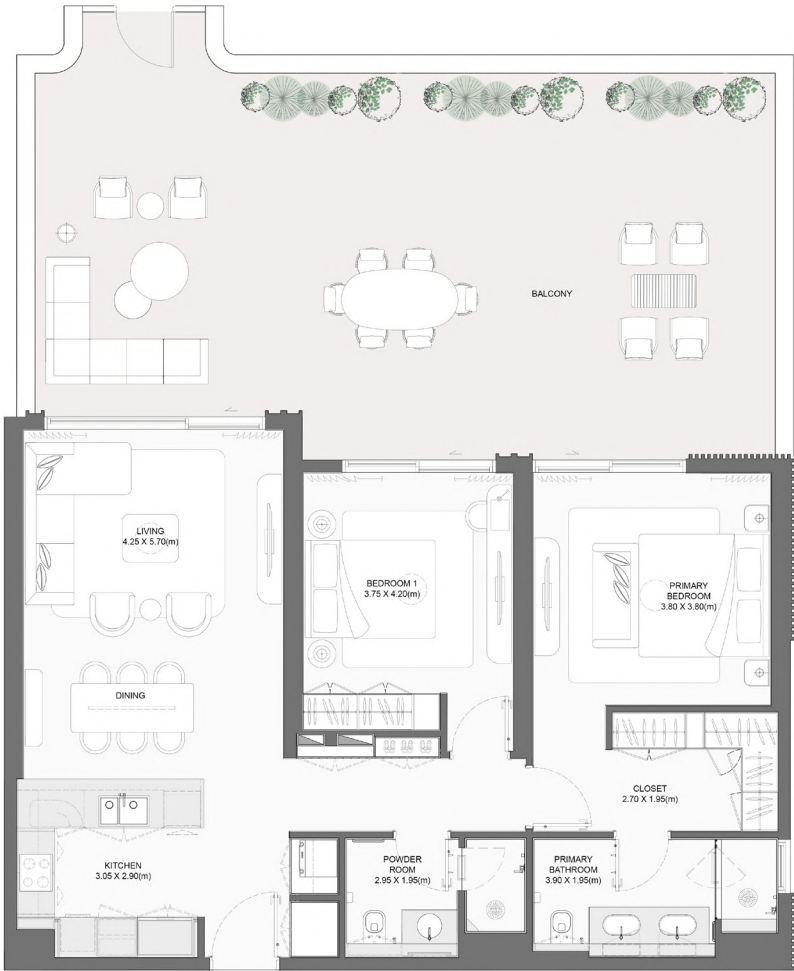
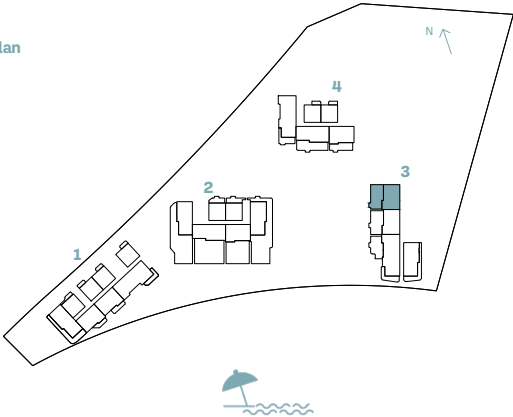
Disclaimer: All measurements, dimensions, coordinates, and drawings provided as the Floor Plans in the literature are approximate and provided only for the purpose of marketing, illustration, information, and general guidance, as these drawings are not to scale. All the rooms, sizes, locations, orientations, dimensions, fixtures, fittings, finishes, and specifications (including materials, placement, size of rooms, windows, doors, balconies, and built-in wardrobes) provided in the floor plans may vary as the same have been taken from concept designs prior the actual development/construction. Therefore, their accuracy in relation to the completed construction cannot be confirmed. We make no guarantee, warranty, or representation regarding the accuracy and completeness of the floor plan information, as changes may occur during the development process without notice. Always refer to the latest IFC design available in the sales office for the most accurate representation of all construction details.

2-BEDROOM

TYPE I

BUILDING	UNIT NUMBER	Suite Area NIA		Balcony Area		Total Area NSA	
		SQM	SQFT	SQM	SQFT	SQM	SQFT
3	104	103.90	1118.37	79.98	860.90	183.88	1979.27

Key plan



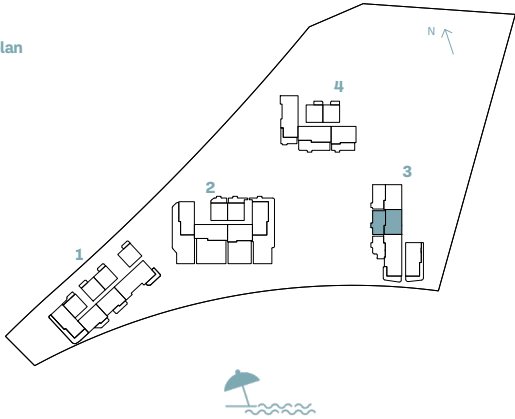
Disclaimer: All measurements, dimensions, coordinates, and drawings provided as the Floor Plans in the literature are approximate and provided only for the purpose of marketing, illustration, information, and general guidance, as these drawings are not to scale. All the rooms, sizes, locations, orientations, dimensions, fixtures, fittings, finishes, and specifications (including materials, placement, size of rooms, windows, doors, balconies, and built-in wardrobes) provided in the floor plans may vary as the same have been taken from concept designs prior the actual development/construction. Therefore, their accuracy in relation to the completed construction cannot be confirmed. We make no guarantee, warranty, or representation regarding the accuracy and completeness of the floor plan information, as changes may occur during the development process without notice. Always refer to the latest IFC design available in the sales office for the most accurate representation of all construction details.

2-BEDROOM

TYPE J

BUILDING	UNIT NUMBER	Suite Area NIA		Balcony Area		Total Area NSA	
		SQM	SQFT	SQM	SQFT	SQM	SQFT
3	103	103.93	1118.69	77.76	837.00	181.69	1955.69

Key plan



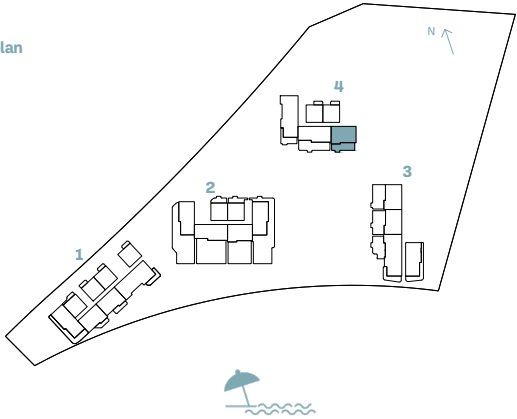
Disclaimer: All measurements, dimensions, coordinates, and drawings provided as the Floor Plans in the literature are approximate and provided only for the purpose of marketing, illustration, information, and general guidance, as these drawings are not to scale. All the rooms, sizes, locations, orientations, dimensions, fixtures, fittings, finishes, and specifications (including materials, placement, size of rooms, windows, doors, balconies, and built-in wardrobes) provided in the floor plans may vary as the same have been taken from concept designs prior the actual development/construction. Therefore, their accuracy in relation to the completed construction cannot be confirmed. We make no guarantee, warranty, or representation regarding the accuracy and completeness of the floor plan information, as changes may occur during the development process without notice. Always refer to the latest IFC design available in the sales office for the most accurate representation of all construction details.

2-BEDROOM

TYPE K

BUILDING	UNIT NUMBER	Suite Area NIA		Balcony Area		Total Area NSA	
		SQM	SQFT	SQM	SQFT	SQM	SQFT
4	101	103.97	1119.12	46.14	496.65	150.11	1615.77

Key plan



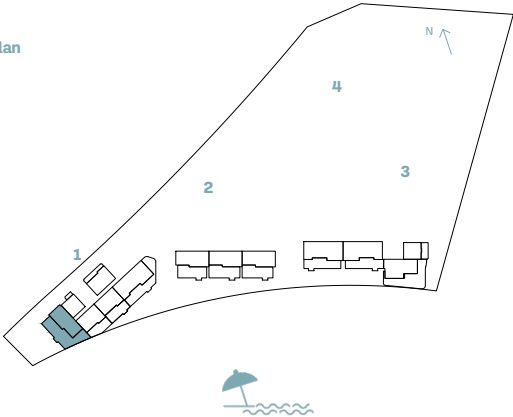
Disclaimer: All measurements, dimensions, coordinates, and drawings provided as the Floor Plans in the literature are approximate and provided only for the purpose of marketing, illustration, information, and general guidance, as these drawings are not to scale. All the rooms, sizes, locations, orientations, dimensions, fixtures, fittings, finishes, and specifications (including materials, placement, size of rooms, windows, doors, balconies, and built-in wardrobes) provided in the floor plans may vary as the same have been taken from concept designs prior the actual development/construction. Therefore, their accuracy in relation to the completed construction cannot be confirmed. We make no guarantee, warranty, or representation regarding the accuracy and completeness of the floor plan information, as changes may occur during the development process without notice. Always refer to the latest IFC design available in the sales office for the most accurate representation of all construction details.

2-BEDROOM

TYPE L

BUILDING	UNIT NUMBER	Suite Area NIA		Balcony Area		Total Area NSA	
		SQM	SQFT	SQM	SQFT	SQM	SQFT
1	G04	125.01	1345.60	152.64	1643.00	277.65	2988.60

Key plan



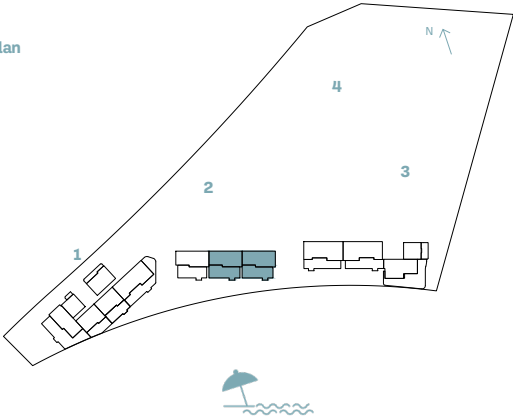
Disclaimer: All measurements, dimensions, coordinates, and drawings provided as the Floor Plans in the literature are approximate and provided only for the purpose of marketing, illustration, information, and general guidance, as these drawings are not to scale. All the rooms, sizes, locations, orientations, dimensions, fixtures, fittings, finishes, and specifications (including materials, placement, size of rooms, windows, doors, balconies, and built-in wardrobes) provided in the floor plans may vary as the same have been taken from concept designs prior to the actual development/construction. Therefore, their accuracy in relation to the completed construction cannot be confirmed. We make no guarantee, warranty, or representation regarding the accuracy and completeness of the floor plan information, as changes may occur during the development process without notice. Always refer to the latest IFC design available in the sales office for the most accurate representation of all construction details.

2-BEDROOM

TYPE M

BUILDING	UNIT NUMBER	Suite Area NIA		Balcony Area		Total Area NSA	
		SQM	SQFT	SQM	SQFT	SQM	SQFT
2	G01 G02	125.01	1345.60	97.69 TO 97.21	1046.36 TO 1051.53	222.22 TO 222.70	2391.96 TO 2397.12

Key plan

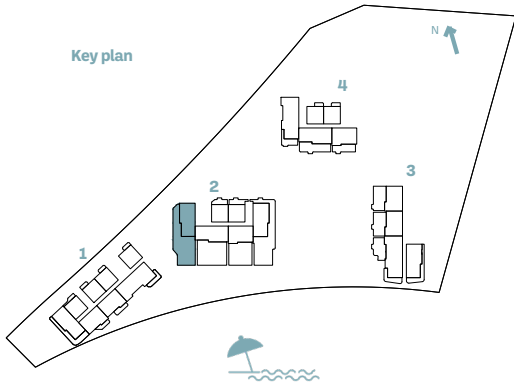


Disclaimer: All measurements, dimensions, coordinates, and drawings provided as the Floor Plans in the literature are approximate and provided only for the purpose of marketing, illustration, information, and general guidance, as these drawings are not to scale. All the rooms, sizes, locations, orientations, dimensions, fixtures, fittings, finishes, and specifications (including materials, placement, size of rooms, windows, doors, balconies, and built-in wardrobes) provided in the floor plans may vary as the same have been taken from concept designs prior to the actual development/construction. Therefore, their accuracy in relation to the completed construction cannot be confirmed. We make no guarantee, warranty, or representation regarding the accuracy and completeness of the floor plan information, as changes may occur during the development process without notice. Always refer to the latest IFC design available in the sales office for the most accurate representation of all construction details.

2-BEDROOM

TYPE N

BUILDING	UNIT NUMBER	Suite Area NIA		Balcony Area		Total Area NSA	
		SQM	SQFT	SQM	SQFT	SQM	SQFT
2	106	125.35	1349.26	207.05	2228.67	332.40	3577.92



Disclaimer: All measurements, dimensions, coordinates, and drawings provided as the Floor Plans in the literature are approximate and provided only for the purpose of marketing, illustration, information, and general guidance, as these drawings are not to scale. All the rooms, sizes, locations, orientations, dimensions, fixtures, fittings, finishes, and specifications (including materials, placement, size of rooms, windows, doors, balconies, and built-in wardrobes) provided in the floor plans may vary as the same have been taken from concept designs prior to the actual development/construction. Therefore, their accuracy in relation to the completed construction cannot be confirmed. We make no guarantee, warranty, or representation regarding the accuracy and completeness of the floor plan information, as changes may occur during the development process without notice. Always refer to the latest IFC design available in the sales office for the most accurate representation of all construction details.

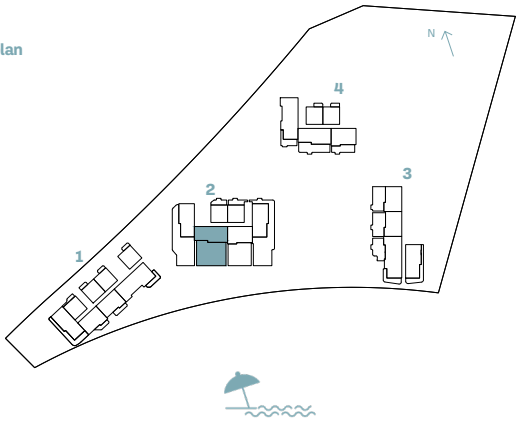
NAKHEEL

2-BEDROOM

TYPE O

BUILDING	UNIT NUMBER	Suite Area NIA		Balcony Area		Total Area NSA	
		SQM	SQFT	SQM	SQFT	SQM	SQFT
2	105	125.06	1346.13	182.91	1968.83	307.97	3314.96

Key plan



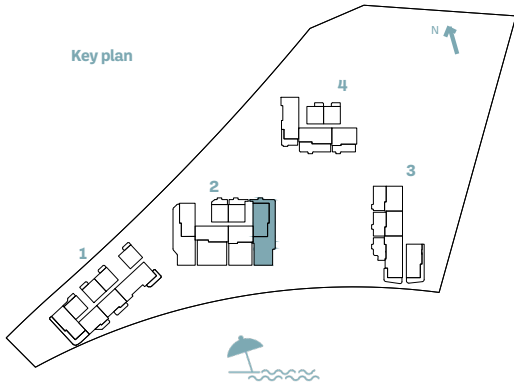
Disclaimer: All measurements, dimensions, coordinates, and drawings provided as the Floor Plans in the literature are approximate and provided only for the purpose of marketing, illustration, information, and general guidance, as these drawings are not to scale. All the rooms, sizes, locations, orientations, dimensions, fixtures, fittings, finishes, and specifications (including materials, placement, size of rooms, windows, doors, balconies, and built-in wardrobes) provided in the floor plans may vary as the same have been taken from concept designs prior to the actual development/construction. Therefore, their accuracy in relation to the completed construction cannot be confirmed. We make no guarantee, warranty, or representation regarding the accuracy and completeness of the floor plan information, as changes may occur during the development process without notice. Always refer to the latest IFC design available in the sales office for the most accurate representation of all construction details.

NAKHEEL

2-BEDROOM

TYPE P

BUILDING	UNIT NUMBER	Suite Area NIA		Balcony Area		Total Area NSA	
		SQM	SQFT	SQM	SQFT	SQM	SQFT
2	103	125.38	1349.58	232.40	2501.53	357.78	3851.11



Disclaimer: All measurements, dimensions, coordinates, and drawings provided as the Floor Plans in the literature are approximate and provided only for the purpose of marketing, illustration, information, and general guidance, as these drawings are not to scale. All the rooms, sizes, locations, orientations, dimensions, fixtures, fittings, finishes, and specifications (including materials, placement, size of rooms, windows, doors, balconies, and built-in wardrobes) provided in the floor plans may vary as the same have been taken from concept designs prior to the actual development/construction. Therefore, their accuracy in relation to the completed construction cannot be confirmed. We make no guarantee, warranty, or representation regarding the accuracy and completeness of the floor plan information, as changes may occur during the development process without notice. Always refer to the latest IFC design available in the sales office for the most accurate representation of all construction details.

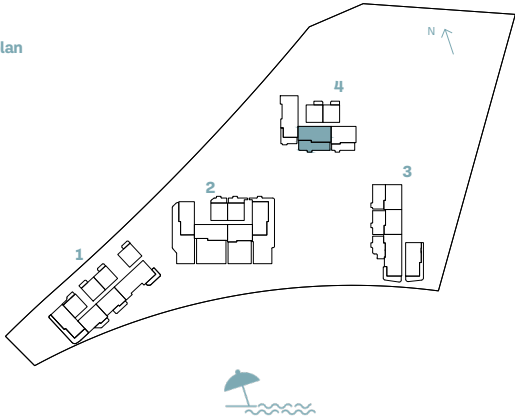
NAKHEEL

2-BEDROOM

TYPE Q

BUILDING	UNIT NUMBER	Suite Area NIA		Balcony Area		Total Area NSA	
		SQM	SQFT	SQM	SQFT	SQM	SQFT
4	102	124.97	1345.17	74.79	805.03	199.76	2150.20

Key plan



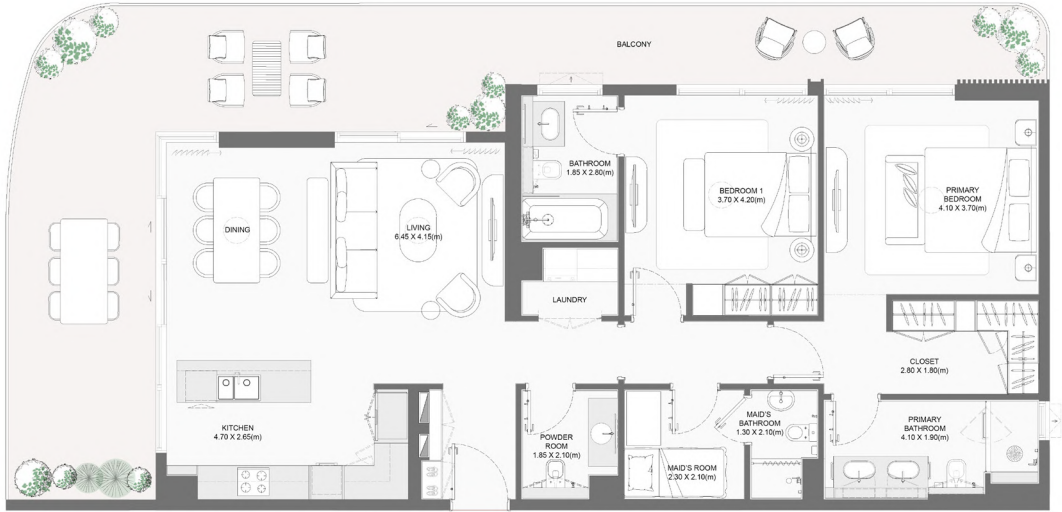
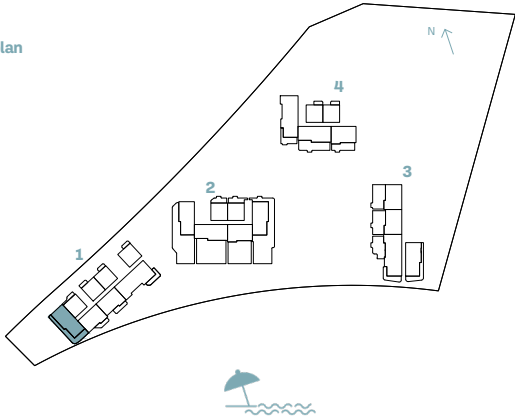
Disclaimer: All measurements, dimensions, coordinates, and drawings provided as the Floor Plans in the literature are approximate and provided only for the purpose of marketing, illustration, information, and general guidance, as these drawings are not to scale. All the rooms, sizes, locations, orientations, dimensions, fixtures, fittings, finishes, and specifications (including materials, placement, size of rooms, windows, doors, balconies, and built-in wardrobes) provided in the floor plans may vary as the same have been taken from concept designs prior to the actual development/construction. Therefore, their accuracy in relation to the completed construction cannot be confirmed. We make no guarantee, warranty, or representation regarding the accuracy and completeness of the floor plan information, as changes may occur during the development process without notice. Always refer to the latest IFC design available in the sales office for the most accurate representation of all construction details.

2-BEDROOM

TYPE R

BUILDING	UNIT NUMBER	Suite Area NIA		Balcony Area		Total Area NSA	
		SQM	SQFT	SQM	SQFT	SQM	SQFT
1	105	125.01	1345.60	59.96	645.40	184.97	1991.00

Key plan



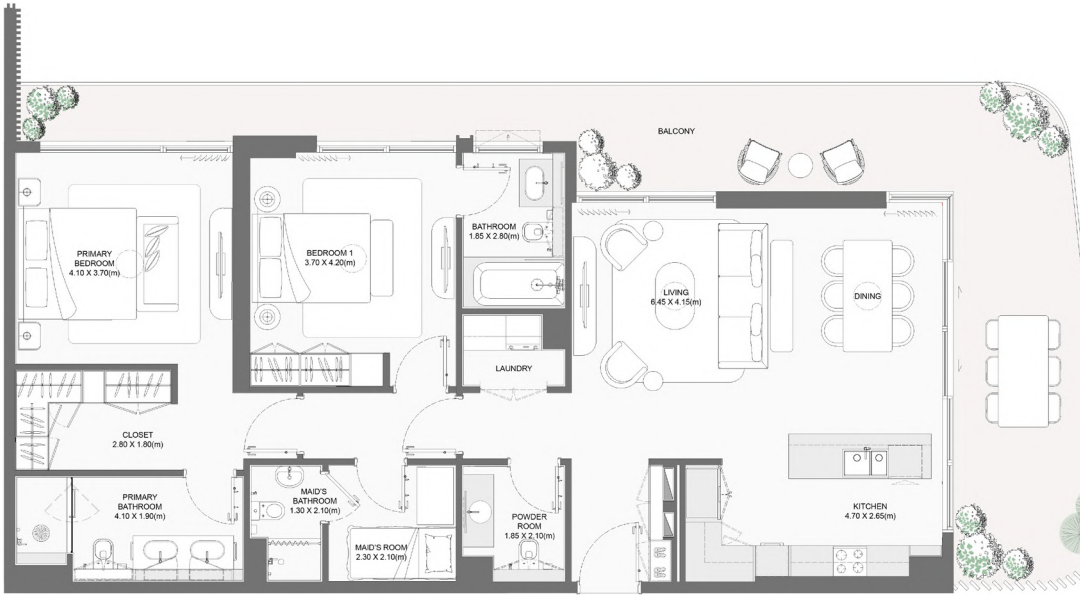
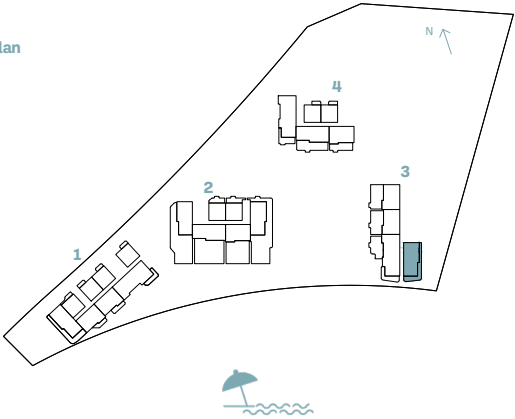
Disclaimer: All measurements, dimensions, coordinates, and drawings provided as the Floor Plans in the literature are approximate and provided only for the purpose of marketing, illustration, information, and general guidance, as these drawings are not to scale. All the rooms, sizes, locations, orientations, dimensions, fixtures, fittings, finishes, and specifications (including materials, placement, size of rooms, windows, doors, balconies, and built-in wardrobes) provided in the floor plans may vary as the same have been taken from concept designs prior to the actual development/construction. Therefore, their accuracy in relation to the completed construction cannot be confirmed. We make no guarantee, warranty, or representation regarding the accuracy and completeness of the floor plan information, as changes may occur during the development process without notice. Always refer to the latest IFC design available in the sales office for the most accurate representation of all construction details.

2-BEDROOM

TYPE S

BUILDING	UNIT NUMBER	Suite Area NIA		Balcony Area		Total Area NSA	
		SQM	SQFT	SQM	SQFT	SQM	SQFT
3	101	125.23	1347.96	47.50	511.29	172.73	1859.25

Key plan



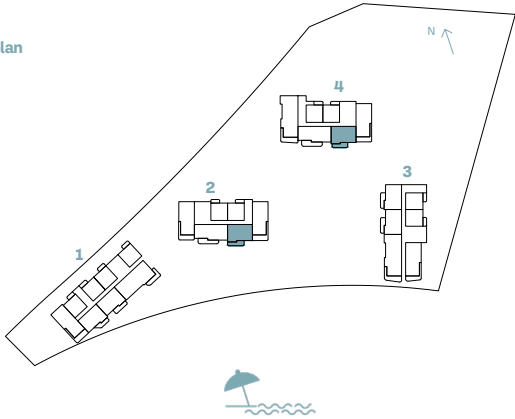
Disclaimer: All measurements, dimensions, coordinates, and drawings provided as the Floor Plans in the literature are approximate and provided only for the purpose of marketing, illustration, information, and general guidance, as these drawings are not to scale. All the rooms, sizes, locations, orientations, dimensions, fixtures, fittings, finishes, and specifications (including materials, placement, size of rooms, windows, doors, balconies, and built-in wardrobes) provided in the floor plans may vary as the same have been taken from concept designs prior to the actual development/construction. Therefore, their accuracy in relation to the completed construction cannot be confirmed. We make no guarantee, warranty, or representation regarding the accuracy and completeness of the floor plan information, as changes may occur during the development process without notice. Always refer to the latest IFC design available in the sales office for the most accurate representation of all construction details.

2-BEDROOM

TYPE T

BUILDING	UNIT NUMBER	Suite Area NIA		Balcony Area		Total Area NSA	
		SQM	SQFT	SQM	SQFT	SQM	SQFT
4	202 302 402 502 602 702 802 902 1002 1102 1202 1302 1402 1502 1602 1702 1802 1901	103.89	1118.26	17.54	188.80	121.43	1307.06
2	204 304 404 504 604 704 804 904 1004 1104 1204 1303	103.85	1117.83	17.56	189.01	121.41	1306.85

Key plan



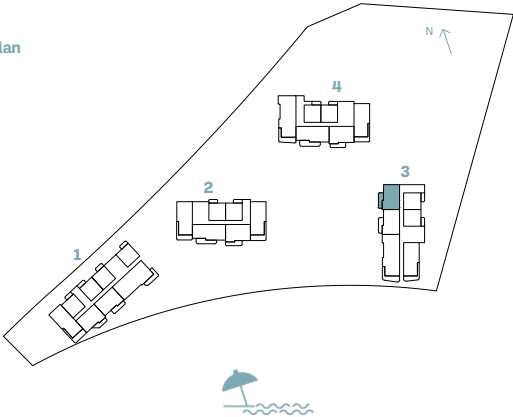
Disclaimer: All measurements, dimensions, coordinates, and drawings provided as the Floor Plans in the literature are approximate and provided only for the purpose of marketing, illustration, information, and general guidance, as these drawings are not to scale. All the rooms, sizes, locations, orientations, dimensions, fixtures, fittings, finishes, and specifications (including materials, placement, size of rooms, windows, doors, balconies, and built-in wardrobes) provided in the floor plans may vary as the same have been taken from concept designs prior to the actual development/construction. Therefore, their accuracy in relation to the completed construction cannot be confirmed. We make no guarantee, warranty, or representation regarding the accuracy and completeness of the floor plan information, as changes may occur during the development process without notice. Always refer to the latest IFC design available in the sales office for the most accurate representation of all construction details.

2-BEDROOM

TYPE U

BUILDING	UNIT NUMBER	Suite Area NIA		Balcony Area		Total Area NSA	
		SQM	SQFT	SQM	SQFT	SQM	SQFT
3	204 304 404 504 604 702	103.79	1117.19	17.44	187.72	121.23	1304.91

Key plan



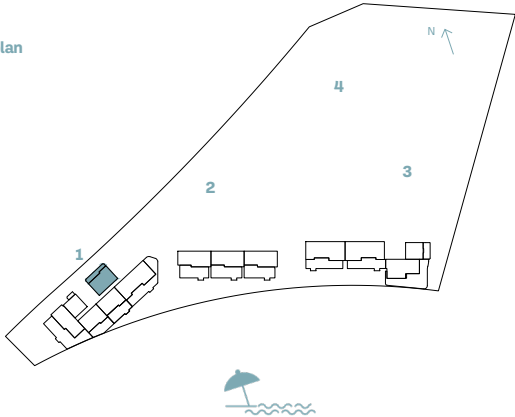
Disclaimer: All measurements, dimensions, coordinates, and drawings provided as the Floor Plans in the literature are approximate and provided only for the purpose of marketing, illustration, information, and general guidance, as these drawings are not to scale. All the rooms, sizes, locations, orientations, dimensions, fixtures, fittings, finishes, and specifications (including materials, placement, size of rooms, windows, doors, balconies, and built-in wardrobes) provided in the floor plans may vary as the same have been taken from concept designs prior the actual development/construction. Therefore, their accuracy in relation to the completed construction cannot be confirmed. We make no guarantee, warranty, or representation regarding the accuracy and completeness of the floor plan information, as changes may occur during the development process without notice. Always refer to the latest IFC design available in the sales office for the most accurate representation of all construction details.

2 BEDROOM

TYPE V

BUILDING	UNIT NUMBER	Suite Area NIA		Balcony Area		Total Area NSA	
		SQM	SQFT	SQM	SQFT	SQM	SQFT
1	G06	104.38	1123.54	28.21	303.65	132.59	1427.19

Key plan



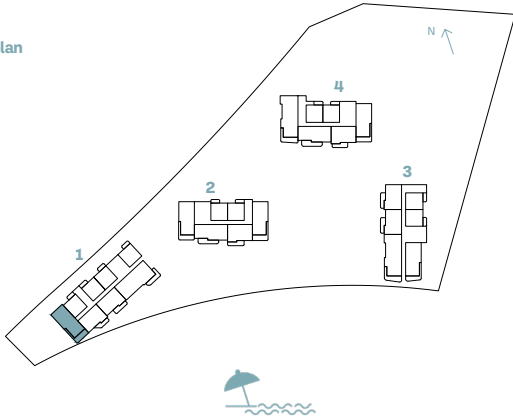
Disclaimer: All measurements, dimensions, coordinates, and drawings provided as the Floor Plans in the literature are approximate and provided only for the purpose of marketing, illustration, information, and general guidance, as these drawings are not to scale. All the rooms, sizes, locations, orientations, dimensions, fixtures, fittings, finishes, and specifications (including materials, placement, size of rooms, windows, doors, balconies, and built-in wardrobes) provided in the floor plans may vary as the same have been taken from concept designs prior to the actual development/construction. Therefore, their accuracy in relation to the completed construction cannot be confirmed. We make no guarantee, warranty, or representation regarding the accuracy and completeness of the floor plan information, as changes may occur during the development process without notice. Always refer to the latest IFC design available in the sales office for the most accurate representation of all construction details.

2-BEDROOM

TYPE W

BUILDING	UNIT NUMBER	Suite Area NIA		Balcony Area		Total Area NSA	
		SQM	SQFT	SQM	SQFT	SQM	SQFT
1	205 305 405	124.78	1343.12	29.82	320.98	154.60	1664.10

Key plan



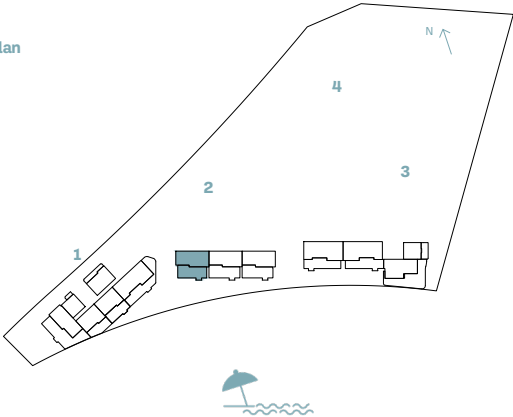
Disclaimer: All measurements, dimensions, coordinates, and drawings provided as the Floor Plans in the literature are approximate and provided only for the purpose of marketing, illustration, information, and general guidance, as these drawings are not to scale. All the rooms, sizes, locations, orientations, dimensions, fixtures, fittings, finishes, and specifications (including materials, placement, size of rooms, windows, doors, balconies, and built-in wardrobes) provided in the floor plans may vary as the same have been taken from concept designs prior to the actual development/construction. Therefore, their accuracy in relation to the completed construction cannot be confirmed. We make no guarantee, warranty, or representation regarding the accuracy and completeness of the floor plan information, as changes may occur during the development process without notice. Always refer to the latest IFC design available in the sales office for the most accurate representation of all construction details.

2-BEDROOM

TYPE X

BUILDING	UNIT NUMBER	Suite Area NIA		Balcony Area		Total Area NSA	
		SQM	SQFT	SQM	SQFT	SQM	SQFT
2	G03	125.00	1345.49	91.17	981.35	216.17	2326.83

Key plan



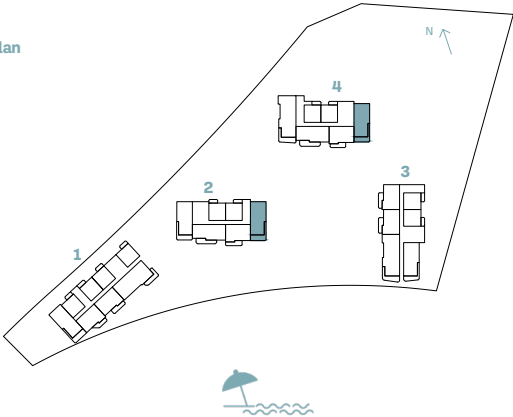
Disclaimer: All measurements, dimensions, coordinates, and drawings provided as the Floor Plans in the literature are approximate and provided only for the purpose of marketing, illustration, information, and general guidance, as these drawings are not to scale. All the rooms, sizes, locations, orientations, dimensions, fixtures, fittings, finishes, and specifications (including materials, placement, size of rooms, windows, doors, balconies, and built-in wardrobes) provided in the floor plans may vary as the same have been taken from concept designs prior to the actual development/construction. Therefore, their accuracy in relation to the completed construction cannot be confirmed. We make no guarantee, warranty, or representation regarding the accuracy and completeness of the floor plan information, as changes may occur during the development process without notice. Always refer to the latest IFC design available in the sales office for the most accurate representation of all construction details.

2-BEDROOM

TYPE Y

BUILDING	UNIT NUMBER	Suite Area NIA		Balcony Area		Total Area NSA	
		SQM	SQFT	SQM	SQFT	SQM	SQFT
4	201 301 401 501 601 701 801 901 1001 1101 1201 1301 1401 1501 1601 1701 1801	125.13	1346.89	27.07	291.38	152.20	1638.27
2	203 303 403 503 603 703 803 903 1003 1103 1203	125.14	1347.00	27.08	291.49	152.22	1638.48

Key plan



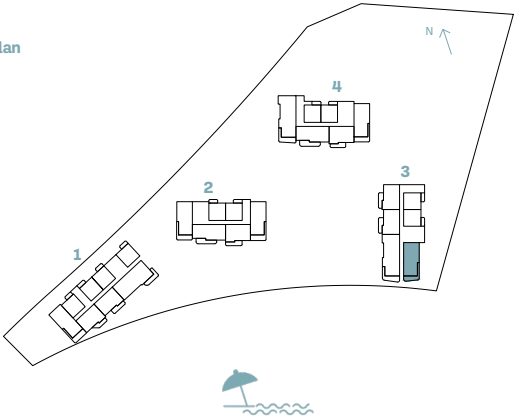
Disclaimer: All measurements, dimensions, coordinates, and drawings provided as the Floor Plans in the literature are approximate and provided only for the purpose of marketing, illustration, information, and general guidance, as these drawings are not to scale. All the rooms, sizes, locations, orientations, dimensions, fixtures, fittings, finishes, and specifications (including materials, placement, size of rooms, windows, doors, balconies, and built-in wardrobes) provided in the floor plans may vary as the same have been taken from concept designs prior to the actual development/construction. Therefore, their accuracy in relation to the completed construction cannot be confirmed. We make no guarantee, warranty, or representation regarding the accuracy and completeness of the floor plan information, as changes may occur during the development process without notice. Always refer to the latest IFC design available in the sales office for the most accurate representation of all construction details.

2-BEDROOM

TYPE Z

BUILDING	UNIT NUMBER	Suite Area NIA		Balcony Area		Total Area NSA	
		SQM	SQFT	SQM	SQFT	SQM	SQFT
3	201 301 401 501	124.80	1343.34	25.00	269.10	149.80	1612.43

Key plan



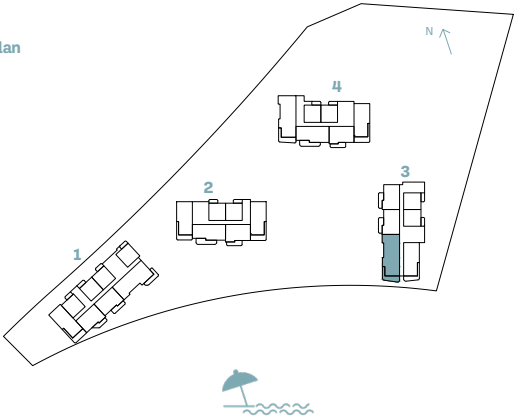
Disclaimer: All measurements, dimensions, coordinates, and drawings provided as the Floor Plans in the literature are approximate and provided only for the purpose of marketing, illustration, information, and general guidance, as these drawings are not to scale. All the rooms, sizes, locations, orientations, dimensions, fixtures, fittings, finishes, and specifications (including materials, placement, size of rooms, windows, doors, balconies, and built-in wardrobes) provided in the floor plans may vary as the same have been taken from concept designs prior to the actual development/construction. Therefore, their accuracy in relation to the completed construction cannot be confirmed. We make no guarantee, warranty, or representation regarding the accuracy and completeness of the floor plan information, as changes may occur during the development process without notice. Always refer to the latest IFC design available in the sales office for the most accurate representation of all construction details.

3-BEDROOM

TYPE A

BUILDING	UNIT NUMBER	Suite Area NIA		Balcony Area		Total Area NSA	
		SQM	SQFT	SQM	SQFT	SQM	SQFT
3	202 302 402 502	171.91	1850.42	28.69	308.82	200.60	2159.24

Key plan



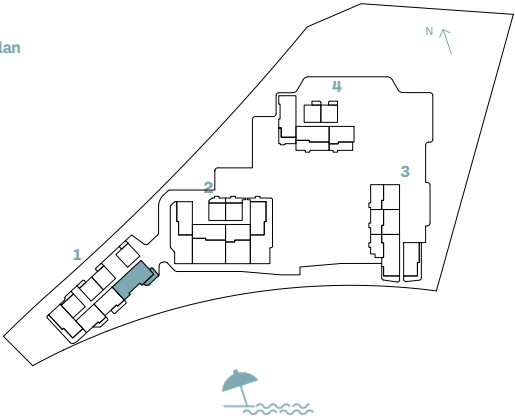
Disclaimer: All measurements, dimensions, coordinates, and drawings provided as the Floor Plans in the literature are approximate and provided only for the purpose of marketing, illustration, information, and general guidance, as these drawings are not to scale. All the rooms, sizes, locations, orientations, dimensions, fixtures, fittings, finishes, and specifications (including materials, placement, size of rooms, windows, doors, balconies, and built-in wardrobes) provided in the floor plans may vary as the same have been taken from concept designs prior the actual development/construction. Therefore, their accuracy in relation to the completed construction cannot be confirmed. We make no guarantee, warranty, or representation regarding the accuracy and completeness of the floor plan information, as changes may occur during the development process without notice. Always refer to the latest IFC design available in the sales office for the most accurate representation of all construction details.

3-BEDROOM

TYPE B

BUILDING	UNIT NUMBER	Suite Area NIA		Balcony Area		Total Area NSA	
		SQM	SQFT	SQM	SQFT	SQM	SQFT
1	102 202 302 402 502 602 702	174.11	1874.10	22.91	246.60	197.02	2120.71

Key plan



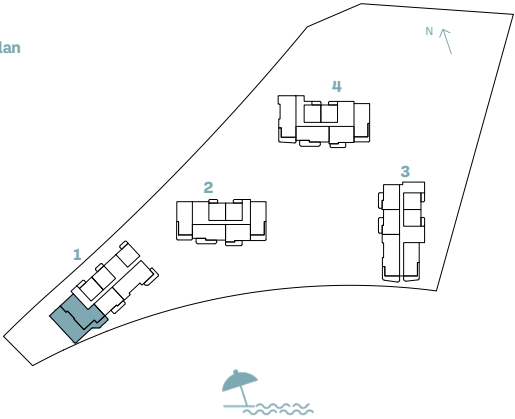
Disclaimer: All measurements, dimensions, coordinates, and drawings provided as the Floor Plans in the literature are approximate and provided only for the purpose of marketing, illustration, information, and general guidance, as these drawings are not to scale. All the rooms, sizes, locations, orientations, dimensions, fixtures, fittings, finishes, and specifications (including materials, placement, size of rooms, windows, doors, balconies, and built-in wardrobes) provided in the floor plans may vary as the same have been taken from concept designs prior to the actual development/construction. Therefore, their accuracy in relation to the completed construction cannot be confirmed. We make no guarantee, warranty, or representation regarding the accuracy and completeness of the floor plan information, as changes may occur during the development process without notice. Always refer to the latest IFC design available in the sales office for the most accurate representation of all construction details.

3-BEDROOM

TYPE C

BUILDING	UNIT NUMBER	Suite Area NIA		Balcony Area		Total Area NSA	
		SQM	SQFT	SQM	SQFT	SQM	SQFT
1	504	176.12	1895.74	184.74	1988.52	360.86	3884.26

Key plan



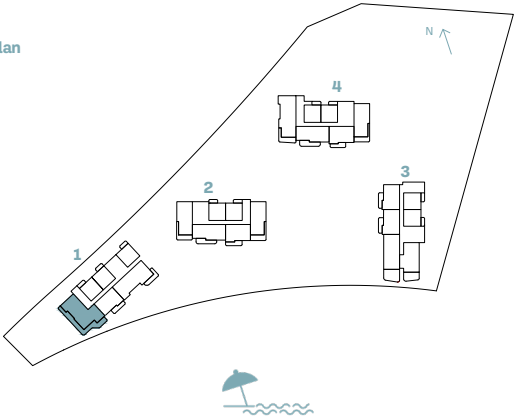
Disclaimer: All measurements, dimensions, coordinates, and drawings provided as the Floor Plans in the literature are approximate and provided only for the purpose of marketing, illustration, information, and general guidance, as these drawings are not to scale. All the rooms, sizes, locations, orientations, dimensions, fixtures, fittings, finishes, and specifications (including materials, placement, size of rooms, windows, doors, balconies, and built-in wardrobes) provided in the floor plans may vary as the same have been taken from concept designs prior to the actual development/construction. Therefore, their accuracy in relation to the completed construction cannot be confirmed. We make no guarantee, warranty, or representation regarding the accuracy and completeness of the floor plan information, as changes may occur during the development process without notice. Always refer to the latest IFC design available in the sales office for the most accurate representation of all construction details.

3-BEDROOM

TYPE D

BUILDING	UNIT NUMBER	Suite Area NIA		Balcony Area		Total Area NSA	
		SQM	SQFT	SQM	SQFT	SQM	SQFT
1	604	176.12	1895.74	75.71	814.94	251.83	2710.68

Key plan



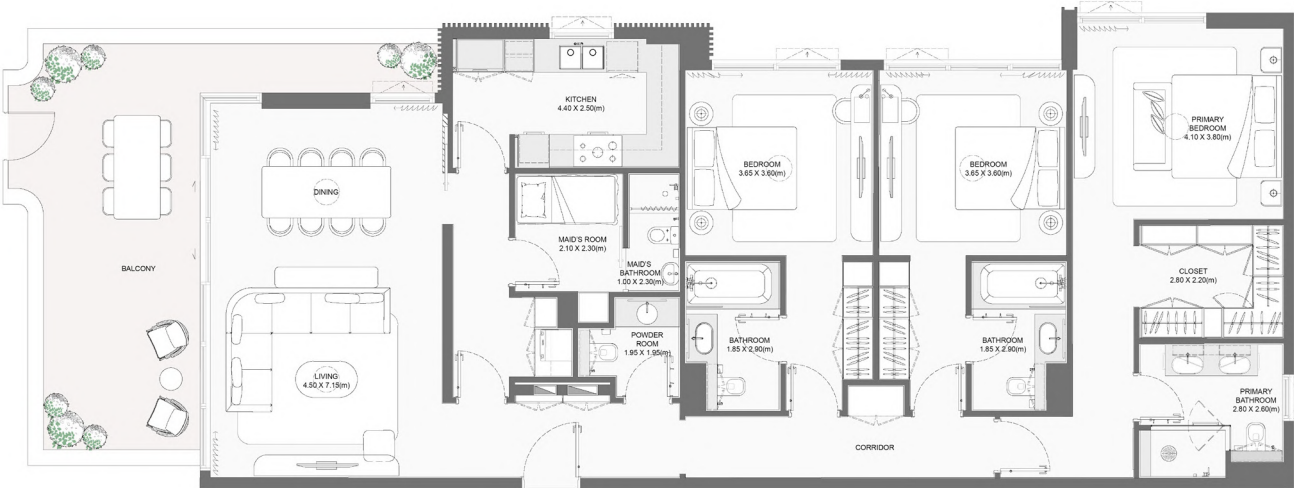
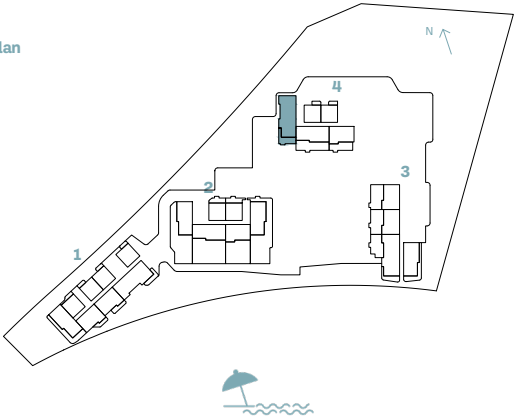
Disclaimer: All measurements, dimensions, coordinates, and drawings provided as the Floor Plans in the literature are approximate and provided only for the purpose of marketing, illustration, information, and general guidance, as these drawings are not to scale. All the rooms, sizes, locations, orientations, dimensions, fixtures, fittings, finishes, and specifications (including materials, placement, size of rooms, windows, doors, balconies, and built-in wardrobes) provided in the floor plans may vary as the same have been taken from concept designs prior to the actual development/construction. Therefore, their accuracy in relation to the completed construction cannot be confirmed. We make no guarantee, warranty, or representation regarding the accuracy and completeness of the floor plan information, as changes may occur during the development process without notice. Always refer to the latest IFC design available in the sales office for the most accurate representation of all construction details.

3-BEDROOM

TYPE E

BUILDING	UNIT NUMBER	Suite Area NIA		Balcony Area		Total Area NSA	
		SQM	SQFT	SQM	SQFT	SQM	SQFT
4	103	172.40	1855.70	33.93	365.22	206.33	2220.92

Key plan



Disclaimer: All measurements, dimensions, coordinates, and drawings provided as the Floor Plans in the literature are approximate and provided only for the purpose of marketing, illustration, information, and general guidance, as these drawings are not to scale. All the rooms, sizes, locations, orientations, dimensions, fixtures, fittings, finishes, and specifications (including materials, placement, size of rooms, windows, doors, balconies, and built-in wardrobes) provided in the floor plans may vary as the same have been taken from concept designs prior the actual development/construction. Therefore, their accuracy in relation to the completed construction cannot be confirmed. We make no guarantee, warranty, or representation regarding the accuracy and completeness of the floor plan information, as changes may occur during the development process without notice. Always refer to the latest IFC design available in the sales office for the most accurate representation of all construction details.

3-BEDROOM

TYPE F

BUILDING	UNIT NUMBER	Suite Area NIA		Balcony Area		Total Area NSA	
		SQM	SQFT	SQM	SQFT	SQM	SQFT
3	102	172.26	1854.19	99.65	1072.62	271.91	2926.81

Key plan



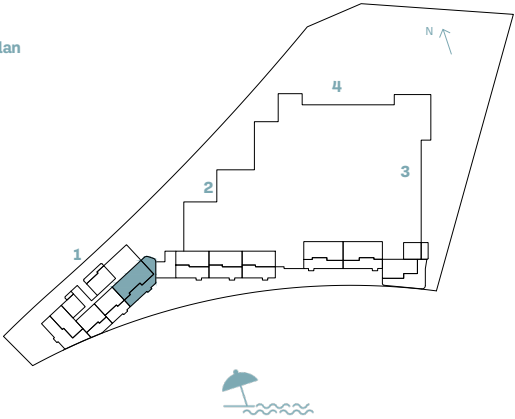
Disclaimer: All measurements, dimensions, coordinates, and drawings provided as the Floor Plans in the literature are approximate and provided only for the purpose of marketing, illustration, information, and general guidance, as these drawings are not to scale. All the rooms, sizes, locations, orientations, dimensions, fixtures, fittings, finishes, and specifications (including materials, placement, size of rooms, windows, doors, balconies, and built-in wardrobes) provided in the floor plans may vary as the same have been taken from concept designs prior to the actual development/construction. Therefore, their accuracy in relation to the completed construction cannot be confirmed. We make no guarantee, warranty, or representation regarding the accuracy and completeness of the floor plan information, as changes may occur during the development process without notice. Always refer to the latest IFC design available in the sales office for the most accurate representation of all construction details.

3-BEDROOM

TYPE G

BUILDING	UNIT NUMBER	Suite Area NIA		Balcony Area		Total Area NSA	
		SQM	SQFT	SQM	SQFT	SQM	SQFT
1	G01	174.57	1879.06	130.34	1402.97	304.91	3282.02

Key plan



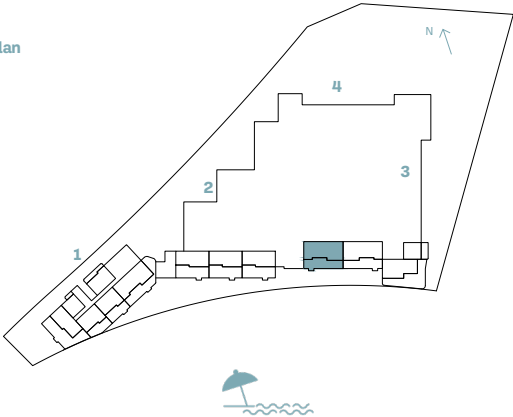
Disclaimer: All measurements, dimensions, coordinates, and drawings provided as the Floor Plans in the literature are approximate and provided only for the purpose of marketing, illustration, information, and general guidance, as these drawings are not to scale. All the rooms, sizes, locations, orientations, dimensions, fixtures, fittings, finishes, and specifications (including materials, placement, size of rooms, windows, doors, balconies, and built-in wardrobes) provided in the floor plans may vary as the same have been taken from concept designs prior to the actual development/construction. Therefore, their accuracy in relation to the completed construction cannot be confirmed. We make no guarantee, warranty, or representation regarding the accuracy and completeness of the floor plan information, as changes may occur during the development process without notice. Always refer to the latest IFC design available in the sales office for the most accurate representation of all construction details.

3-BEDROOM

TYPE H

BUILDING	UNIT NUMBER	Suite Area NIA		Balcony Area		Total Area NSA	
		SQM	SQFT	SQM	SQFT	SQM	SQFT
3	G04	174.58	1879.16	93.34	1004.70	267.92	2883.87

Key plan



Disclaimer: All measurements, dimensions, coordinates, and drawings provided as the Floor Plans in the literature are approximate and provided only for the purpose of marketing, illustration, information, and general guidance, as these drawings are not to scale. All the rooms, sizes, locations, orientations, dimensions, fixtures, fittings, finishes, and specifications (including materials, placement, size of rooms, windows, doors, balconies, and built-in wardrobes) provided in the floor plans may vary as the same have been taken from concept designs prior to the actual development/construction. Therefore, their accuracy in relation to the completed construction cannot be confirmed. We make no guarantee, warranty, or representation regarding the accuracy and completeness of the floor plan information, as changes may occur during the development process without notice. Always refer to the latest IFC design available in the sales office for the most accurate representation of all construction details.

3-BEDROOM

TYPE I

BUILDING	UNIT NUMBER	Suite Area NIA		Balcony Area		Total Area NSA	
		SQM	SQFT	SQM	SQFT	SQM	SQFT
3	G03	174.69	1880.35	96.30	1036.56	270.99	2916.91

Key plan



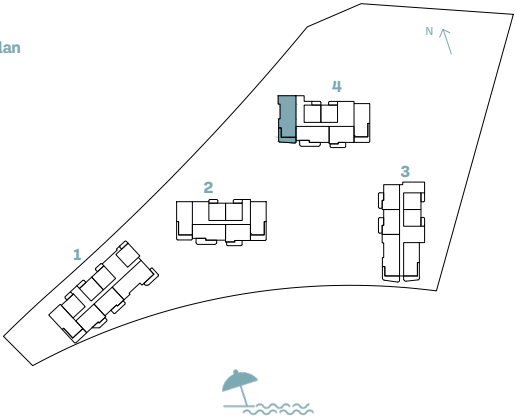
Disclaimer: All measurements, dimensions, coordinates, and drawings provided as the Floor Plans in the literature are approximate and provided only for the purpose of marketing, illustration, information, and general guidance, as these drawings are not to scale. All the rooms, sizes, locations, orientations, dimensions, fixtures, fittings, finishes, and specifications (including materials, placement, size of rooms, windows, doors, balconies, and built-in wardrobes) provided in the floor plans may vary as the same have been taken from concept designs prior to the actual development/construction. Therefore, their accuracy in relation to the completed construction cannot be confirmed. We make no guarantee, warranty, or representation regarding the accuracy and completeness of the floor plan information, as changes may occur during the development process without notice. Always refer to the latest IFC design available in the sales office for the most accurate representation of all construction details.

3-BEDROOM

TYPE J

BUILDING	UNIT NUMBER	Suite Area NIA		Balcony Area		Total Area NSA	
		SQM	SQFT	SQM	SQFT	SQM	SQFT
4	404 504 604 704 804 904 1104 1204 1304 1404 1504 1604 1704 1804	172.40	1855.70	29.56	318.18	201.96	2173.88
4	1903	172.44	1856.13	29.56	318.18	202.00	2174.31
4	204 304 1004	172.40	1855.70	29.63	318.93	202.03	2174.63

Key plan



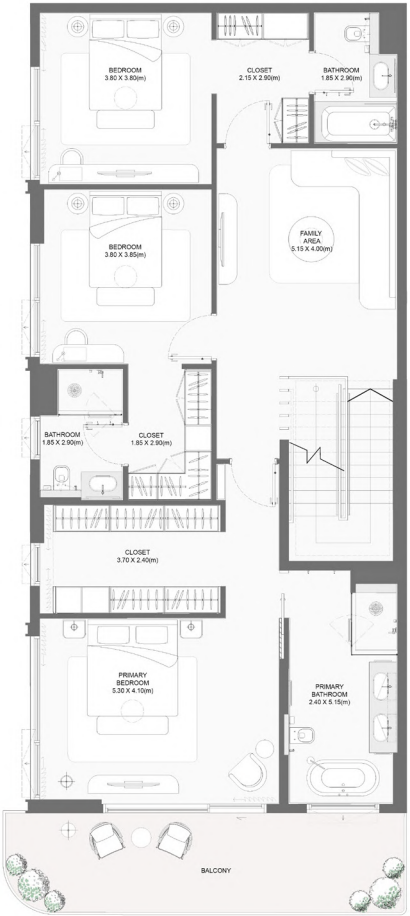
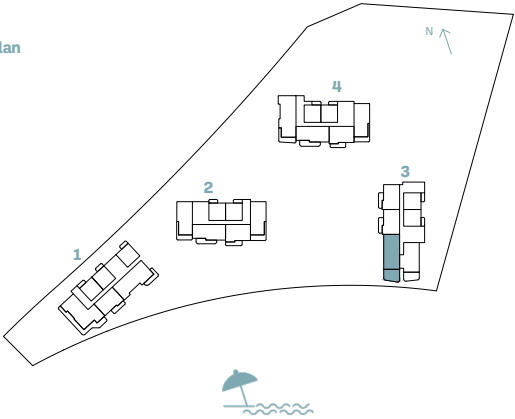
Disclaimer: All measurements, dimensions, coordinates, and drawings provided as the Floor Plans in the literature are approximate and provided only for the purpose of marketing, illustration, information, and general guidance, as these drawings are not to scale. All the rooms, sizes, locations, orientations, dimensions, fixtures, fittings, finishes, and specifications (including materials, placement, size of rooms, windows, doors, balconies, and built-in wardrobes) provided in the floor plans may vary as the same have been taken from concept designs prior the actual development/construction. Therefore, their accuracy in relation to the completed construction cannot be confirmed. We make no guarantee, warranty, or representation regarding the accuracy and completeness of the floor plan information, as changes may occur during the development process without notice. Always refer to the latest IFC design available in the sales office for the most accurate representation of all construction details.

4-BEDROOM

TYPE A

BUILDING	UNIT NUMBER	Suite Area NIA		Balcony Area		Total Area NSA	
		SQM	SQFT	SQM	SQFT	SQM	SQFT
3	602	281.34	3028.32	71.48	769.40	352.82	3797.72

Key plan



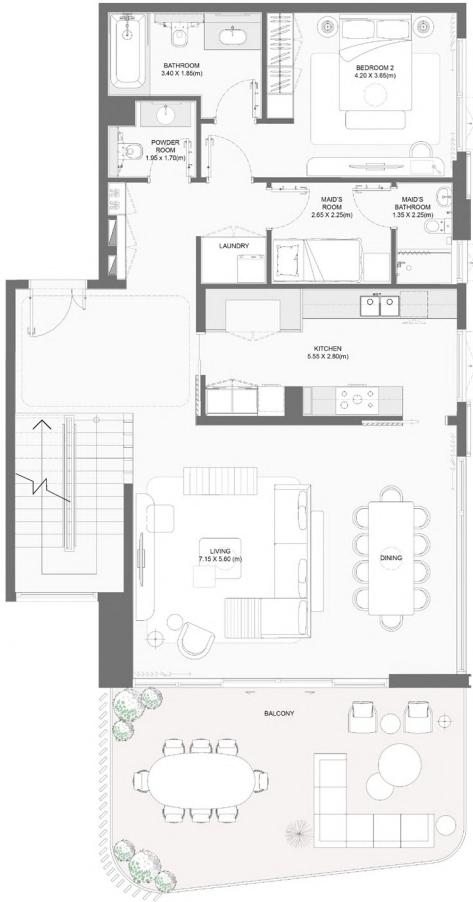
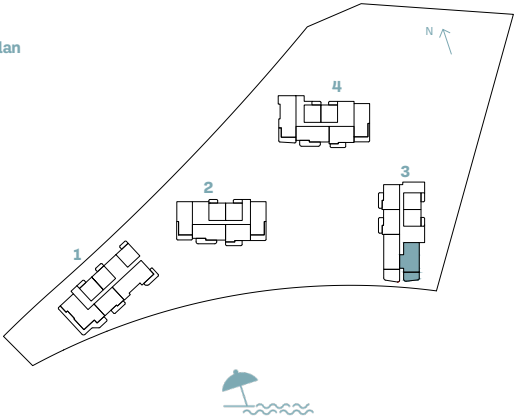
Disclaimer: All measurements, dimensions, coordinates, and drawings provided as the Floor Plans in the literature are approximate and provided only for the purpose of marketing, illustration, information, and general guidance, as these drawings are not to scale. All the rooms, sizes, locations, orientations, dimensions, fixtures, fittings, finishes, and specifications (including materials, placement, size of rooms, windows, doors, balconies, and built-in wardrobes) provided in the floor plans may vary as the same have been taken from concept designs prior to the actual development/construction. Therefore, their accuracy in relation to the completed construction cannot be confirmed. We make no guarantee, warranty, or representation regarding the accuracy and completeness of the floor plan information, as changes may occur during the development process without notice. Always refer to the latest IFC design available in the sales office for the most accurate representation of all construction details.

4-BEDROOM

TYPE B

BUILDING	UNIT NUMBER	Suite Area NIA		Balcony Area		Total Area NSA	
		SQM	SQFT	SQM	SQFT	SQM	SQFT
3	601	271.88	2926.49	47.00	505.90	318.88	3432.40

Key plan

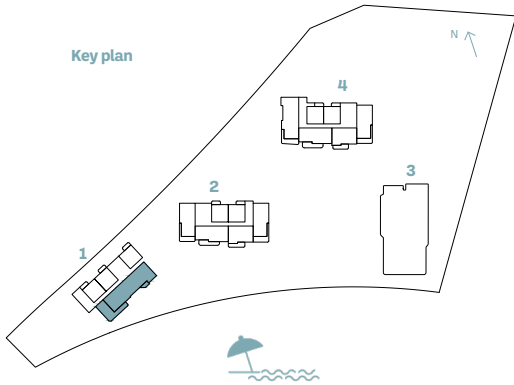


Disclaimer: All measurements, dimensions, coordinates, and drawings provided as the Floor Plans in the literature are approximate and provided only for the purpose of marketing, illustration, information, and general guidance, as these drawings are not to scale. All the rooms, sizes, locations, orientations, dimensions, fixtures, fittings, finishes, and specifications (including materials, placement, size of rooms, windows, doors, balconies, and built-in wardrobes) provided in the floor plans may vary as the same have been taken from concept designs prior to the actual development/construction. Therefore, their accuracy in relation to the completed construction cannot be confirmed. We make no guarantee, warranty, or representation regarding the accuracy and completeness of the floor plan information, as changes may occur during the development process without notice. Always refer to the latest IFC design available in the sales office for the most accurate representation of all construction details.

4-BEDROOM

TYPE C

BUILDING	UNIT NUMBER	Suite Area NIA		Balcony Area		Total Area NSA	
		SQM	SQFT	SQM	SQFT	SQM	SQFT
1	802	236.65	2547.28	79.76	858.53	316.41	3405.81

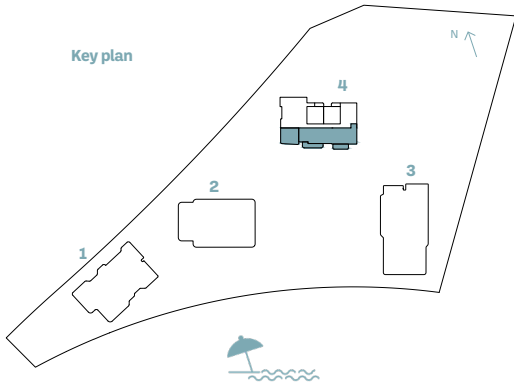


Disclaimer: All measurements, dimensions, coordinates, and drawings provided as the Floor Plans in the literature are approximate and provided only for the purpose of marketing, illustration, information, and general guidance, as these drawings are not to scale. All the rooms, sizes, locations, orientations, dimensions, fixtures, fittings, finishes, and specifications (including materials, placement, size of rooms, windows, doors, balconies, and built-in wardrobes) provided in the floor plans may vary as the same have been taken from concept designs prior to the actual development/construction. Therefore, their accuracy in relation to the completed construction cannot be confirmed. We make no guarantee, warranty, or representation regarding the accuracy and completeness of the floor plan information, as changes may occur during the development process without notice. Always refer to the latest IFC design available in the sales office for the most accurate representation of all construction details.

4-BEDROOM

TYPE D

BUILDING	UNIT NUMBER	Suite Area NIA		Balcony Area		Total Area NSA	
		SQM	SQFT	SQM	SQFT	SQM	SQFT
4	2001	234.18	2520.69	117.02	1259.59	351.20	3780.29



Disclaimer: All measurements, dimensions, coordinates, and drawings provided as the Floor Plans in the literature are approximate and provided only for the purpose of marketing, illustration, information, and general guidance, as these drawings are not to scale. All the rooms, sizes, locations, orientations, dimensions, fixtures, fittings, finishes, and specifications (including materials, placement, size of rooms, windows, doors, balconies, and built-in wardrobes) provided in the floor plans may vary as the same have been taken from concept designs prior to the actual development/construction. Therefore, their accuracy in relation to the completed construction cannot be confirmed. We make no guarantee, warranty, or representation regarding the accuracy and completeness of the floor plan information, as changes may occur during the development process without notice. Always refer to the latest IFC design available in the sales office for the most accurate representation of all construction details.



BAYGROVE

RESIDENCES

DUBAI ISLANDS

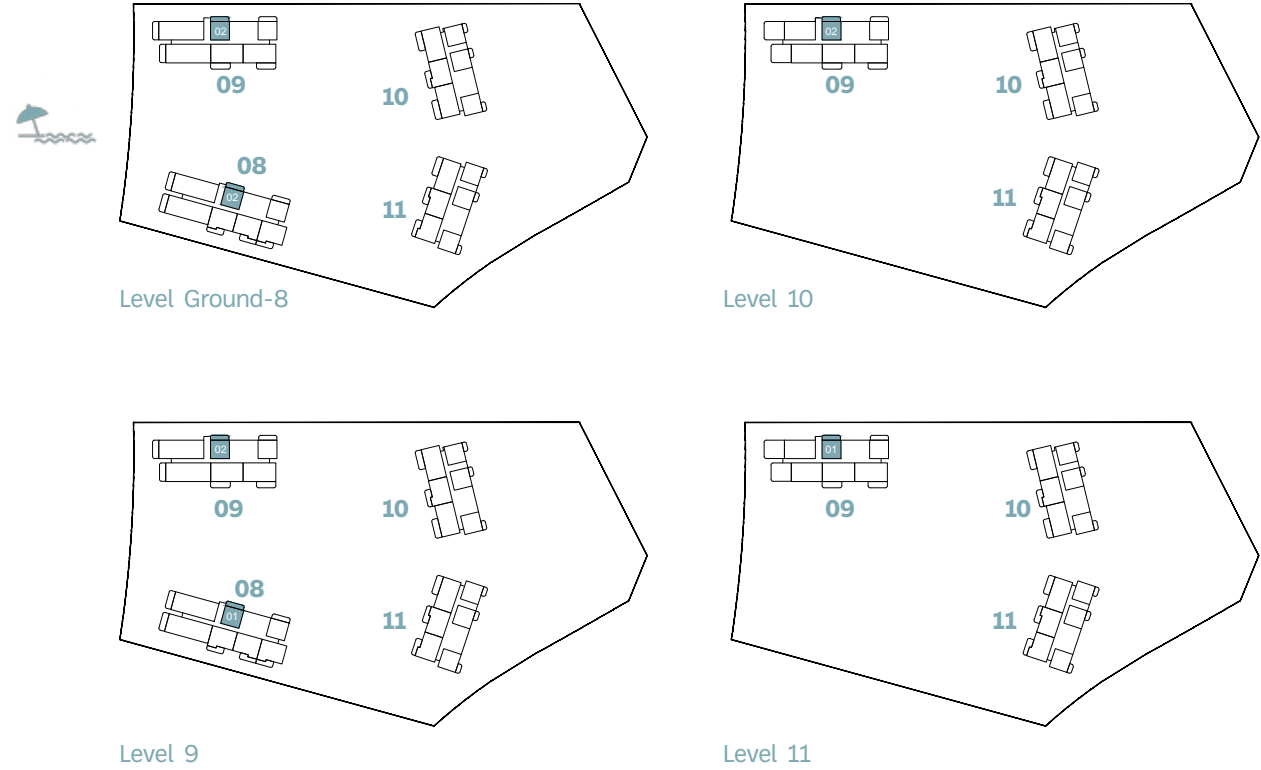
NAKHEEL

An aerial photograph of a beach with waves crashing onto the shore. The water is a deep blue, and the sand is a light tan color. The waves are white and frothy as they break. The image is framed by a white border with rounded corners.

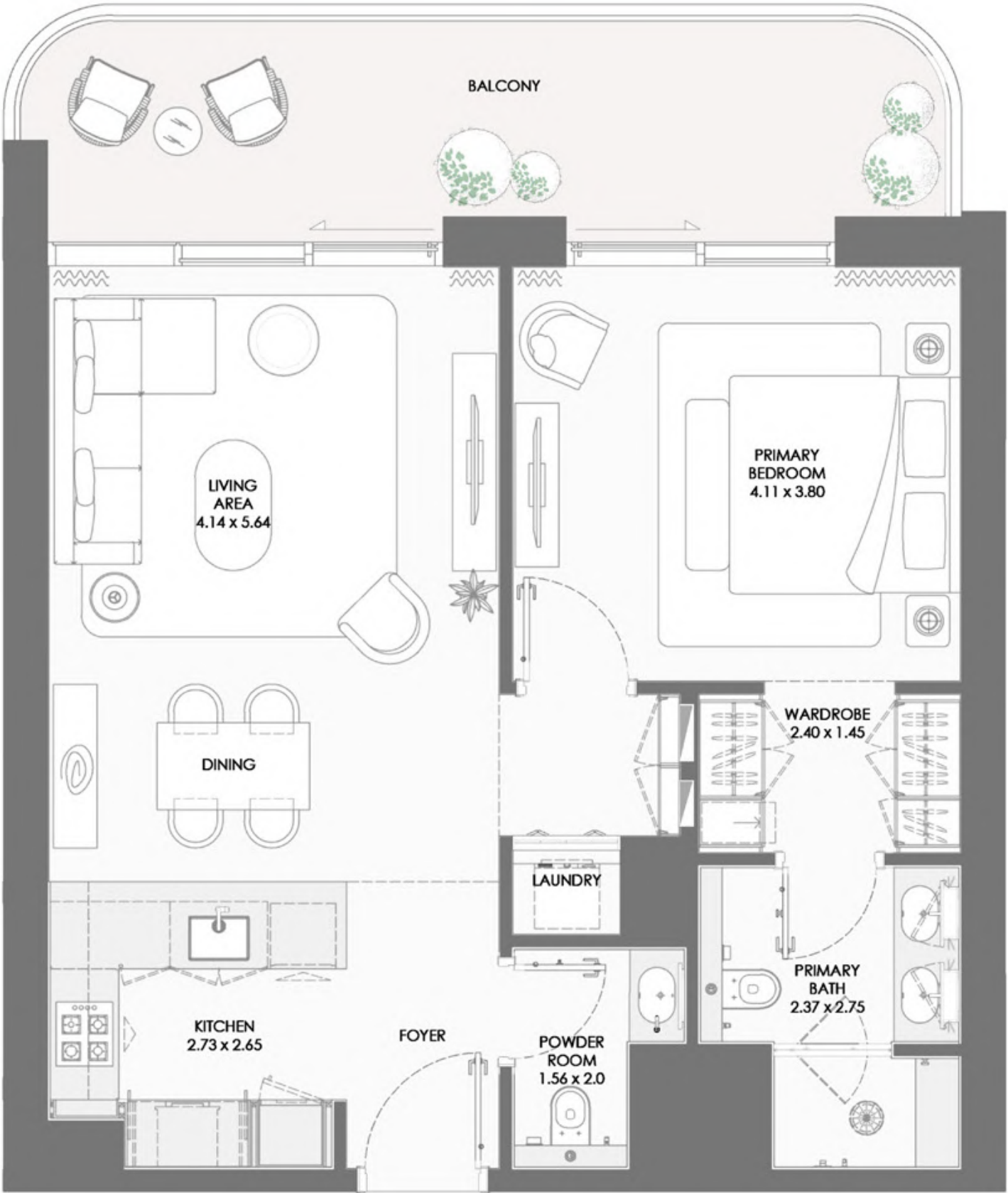
1-bedroom

1-bedroom

KEY PLAN

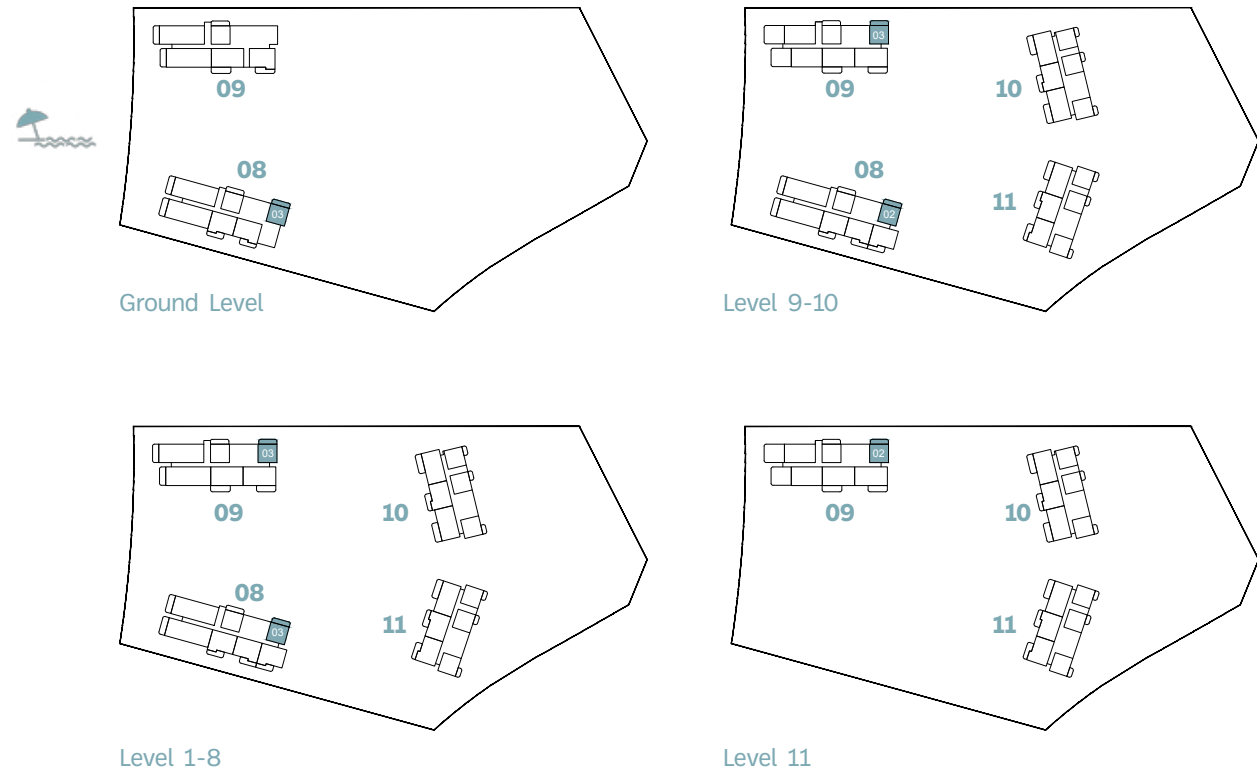


BUILD.	UNIT NUMBER	SUITE AREA NIA		BALCONY AREA		TOTAL AREA NSA	
		SQM	SQFT	SQM	SQFT	SQM	SQFT
8	G02	72.02	775.22	17.98	193.54	90.00	968.75
8	102 202 302 402 502 602 702	71.99	774.89	17.98	193.54	89.97	968.43
8	802 901	72.05	775.54	18.21	196.01	90.26	971.55
9	G02	72.03	775.32	17.89	192.57	89.92	967.89
9	102 202 302 402 502 602 702 802 902 1002 1101	72.03	775.32	17.78	191.38	89.81	966.71

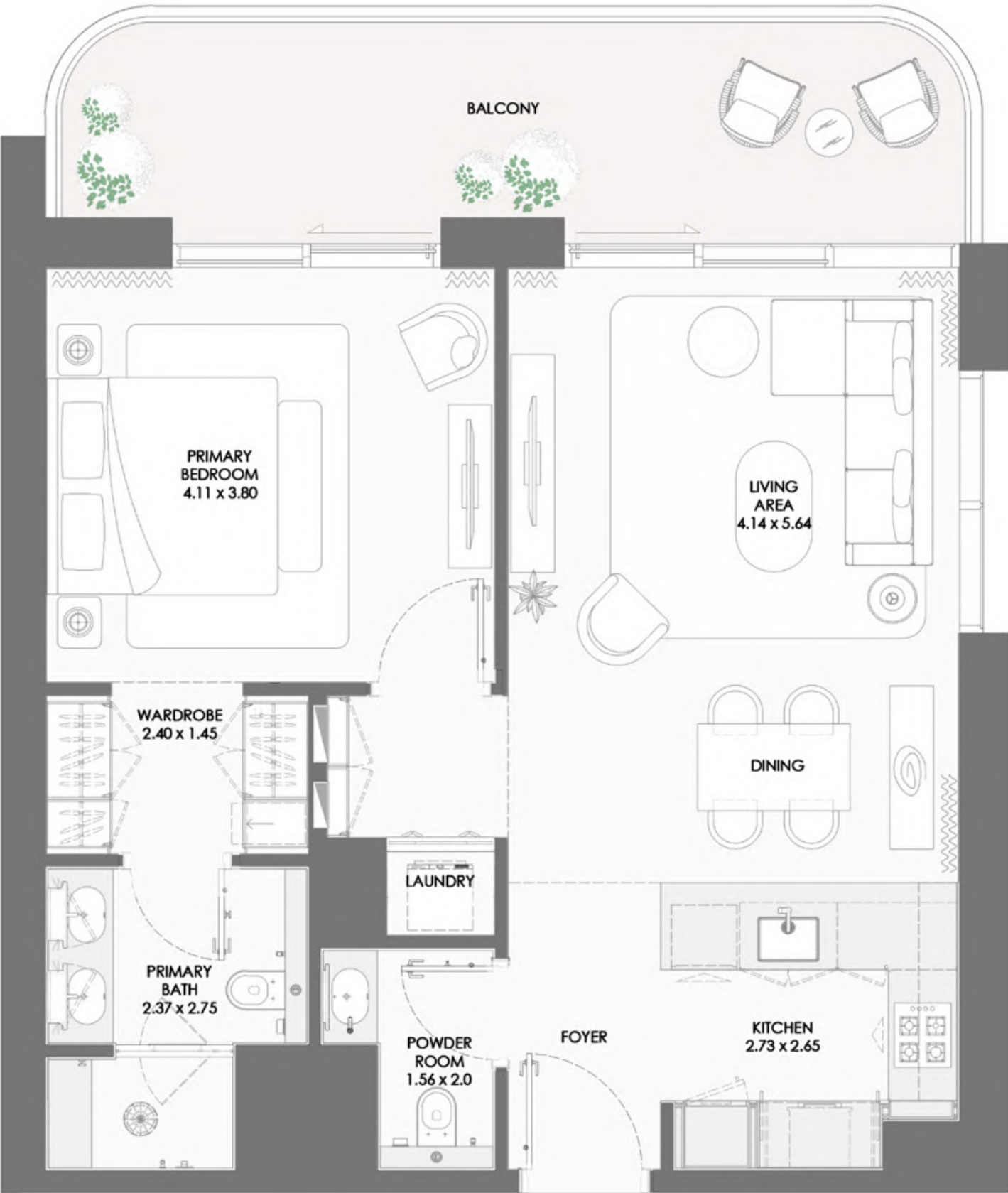


1-bedroom

KEY PLAN



BUILD.	UNIT NUMBER	SUITE AREA NIA		BALCONY AREA		TOTAL AREA NSA	
		SQM	SQFT	SQM	SQFT	SQM	SQFT
8	G03	72.08	775.86	17.60	189.44	89.68	965.31
8	103 203 303 403 503 603 703	72.15	776.62	17.53	188.69	89.68	965.31
8	803 902	72.08	775.86	17.43	187.61	89.51	963.48
9	103 203 303 403 503 603 703 803 903 1003	72.29	778.12	17.43	187.61	89.72	965.74
9	1102	72.37	778.98	17.43	187.61	89.80	966.60

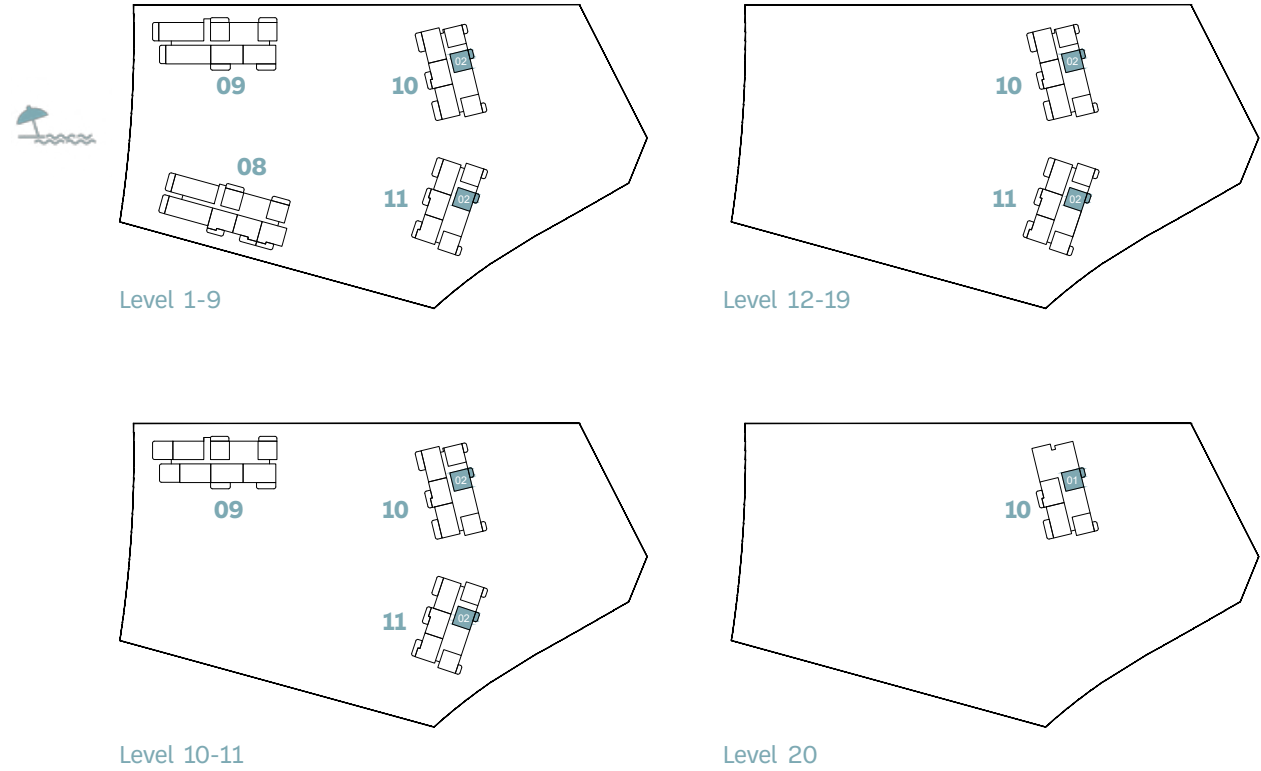


BAYGROVE
RESIDENCES

DUBAI ISLANDS

1-bedroom

KEY PLAN

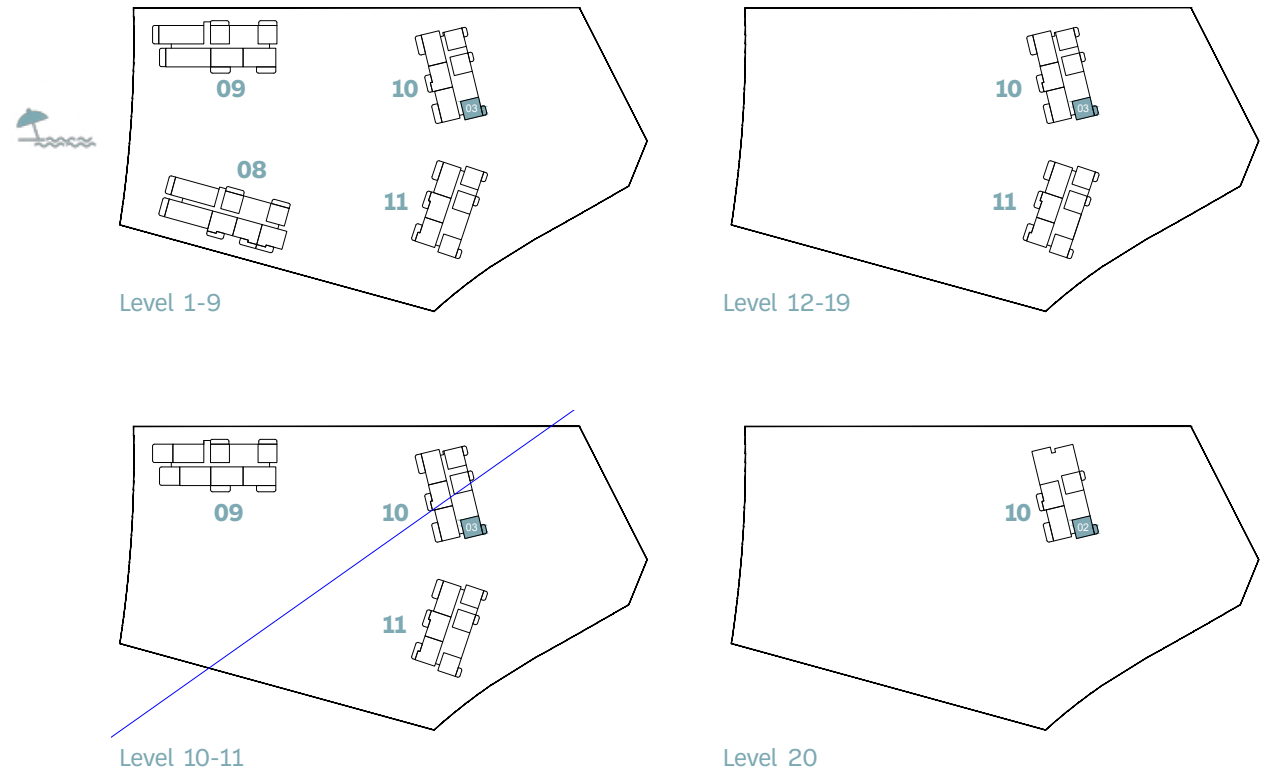


BUILD.	UNIT NUMBER	SUITE AREA NIA		BALCONY AREA		TOTAL AREA NSA	
		SQM	SQFT	SQM	SQFT	SQM	SQFT
10	102 202 302 402 502 602 702 802 902 1102 1202 1302 1402 1502 1602 1702 1802 19021402 1502 1602 1702 1802 1902	72.01	775.11	9.43	101.50	81.44	876.61
10	1002	72.02	775.22	9.43	101.50	81.45	876.72
10	2001	71.79	772.74	9.43	101.50	81.22	874.24
11	102 202 302 402 502 602 702 802 902 1102 1202 1302 1402 1502 1602 1702	72.04	775.43	9.49	102.15	81.53	877.58
11	1002	72.03	775.32	9.49	102.15	81.52	877.47
11	1802	71.81	772.96	9.39	101.07	81.20	874.03

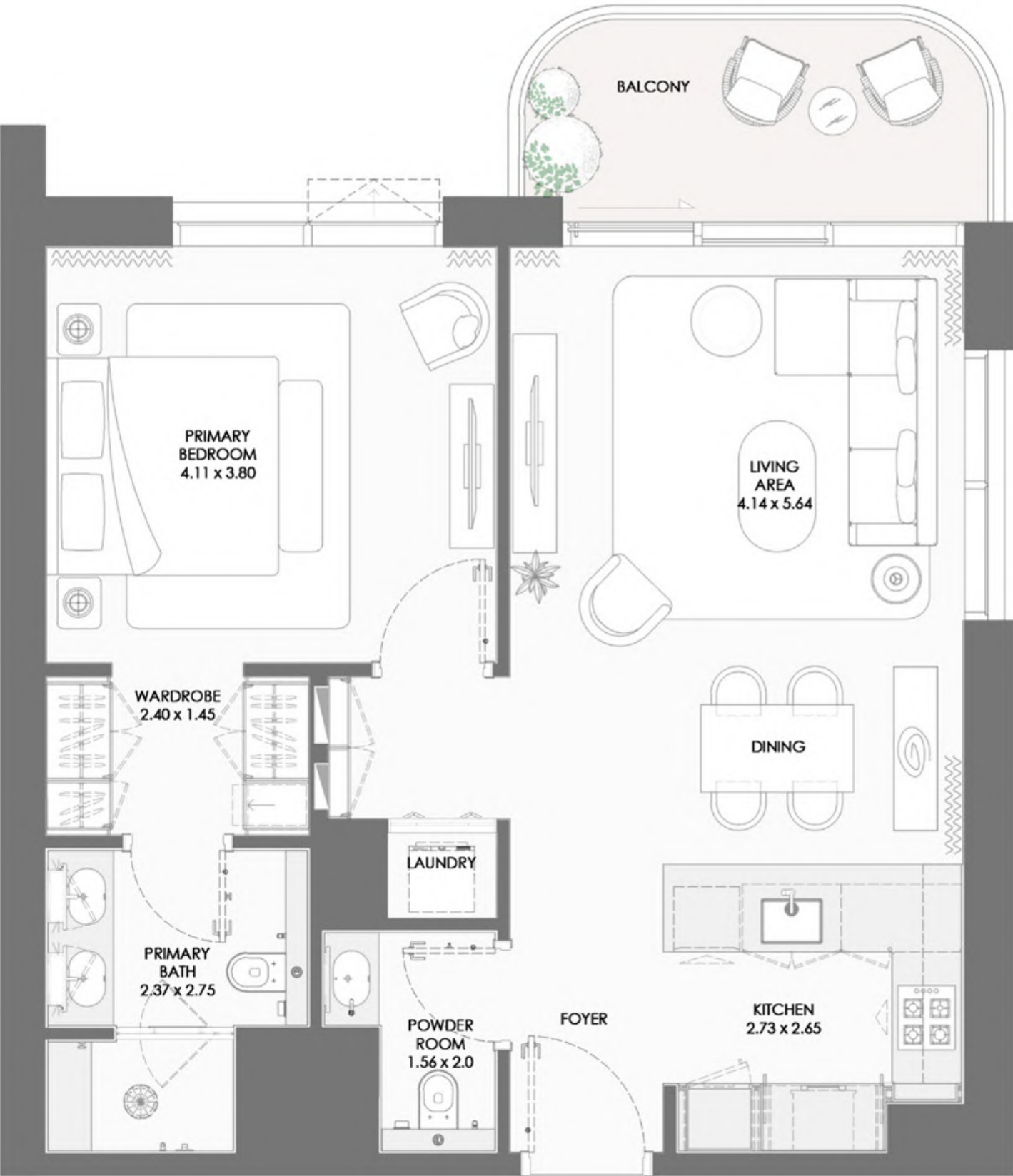


1-bedroom

KEY PLAN

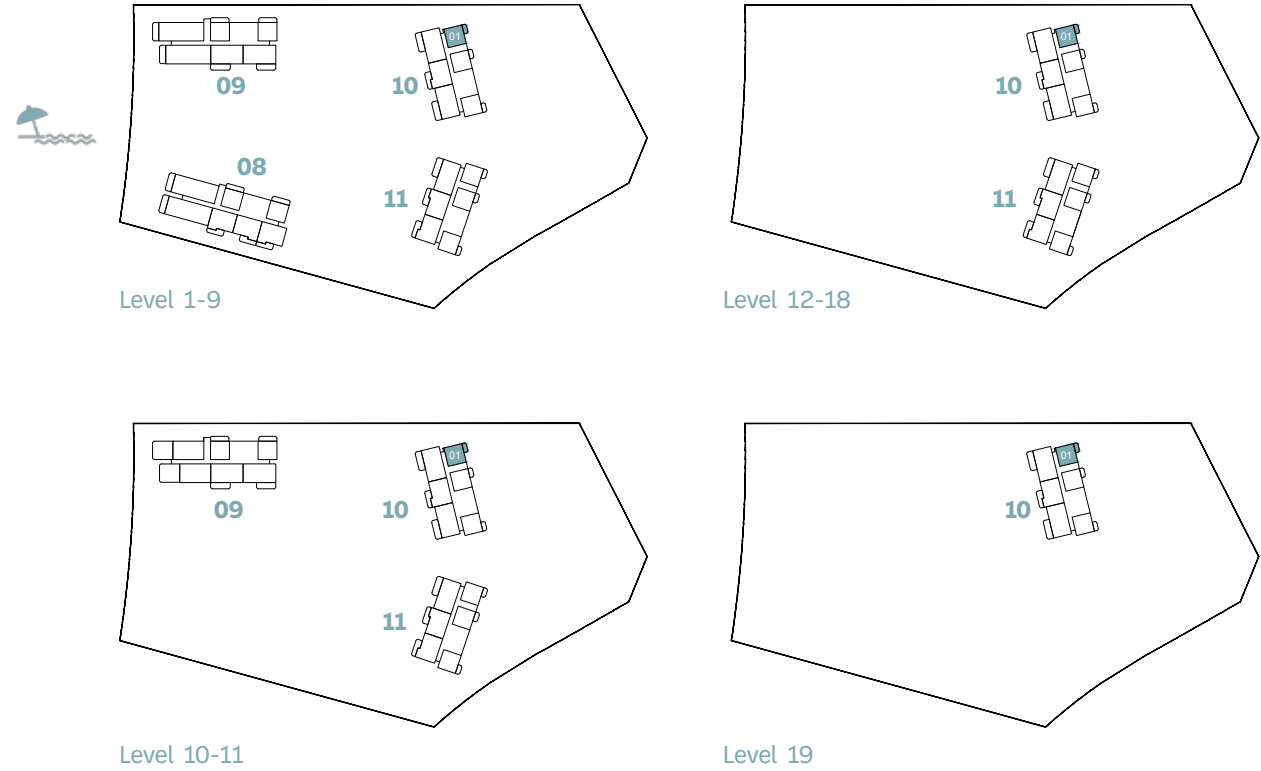


BUILD.	UNIT NUMBER	SUITE AREA NIA		BALCONY AREA		TOTAL AREA NSA	
		SQM	SQFT	SQM	SQFT	SQM	SQFT
10	103 203 303 403 503 603 703 803 903 1003 1103 1203 1303 1403 1503 1603 1703 1803 1903 1402 1502 1602 1702 1802 1902	72.40	779.31	8.07	86.86	80.47	866.17
10	2002	72.37	778.98	8.07	86.86	80.44	865.85

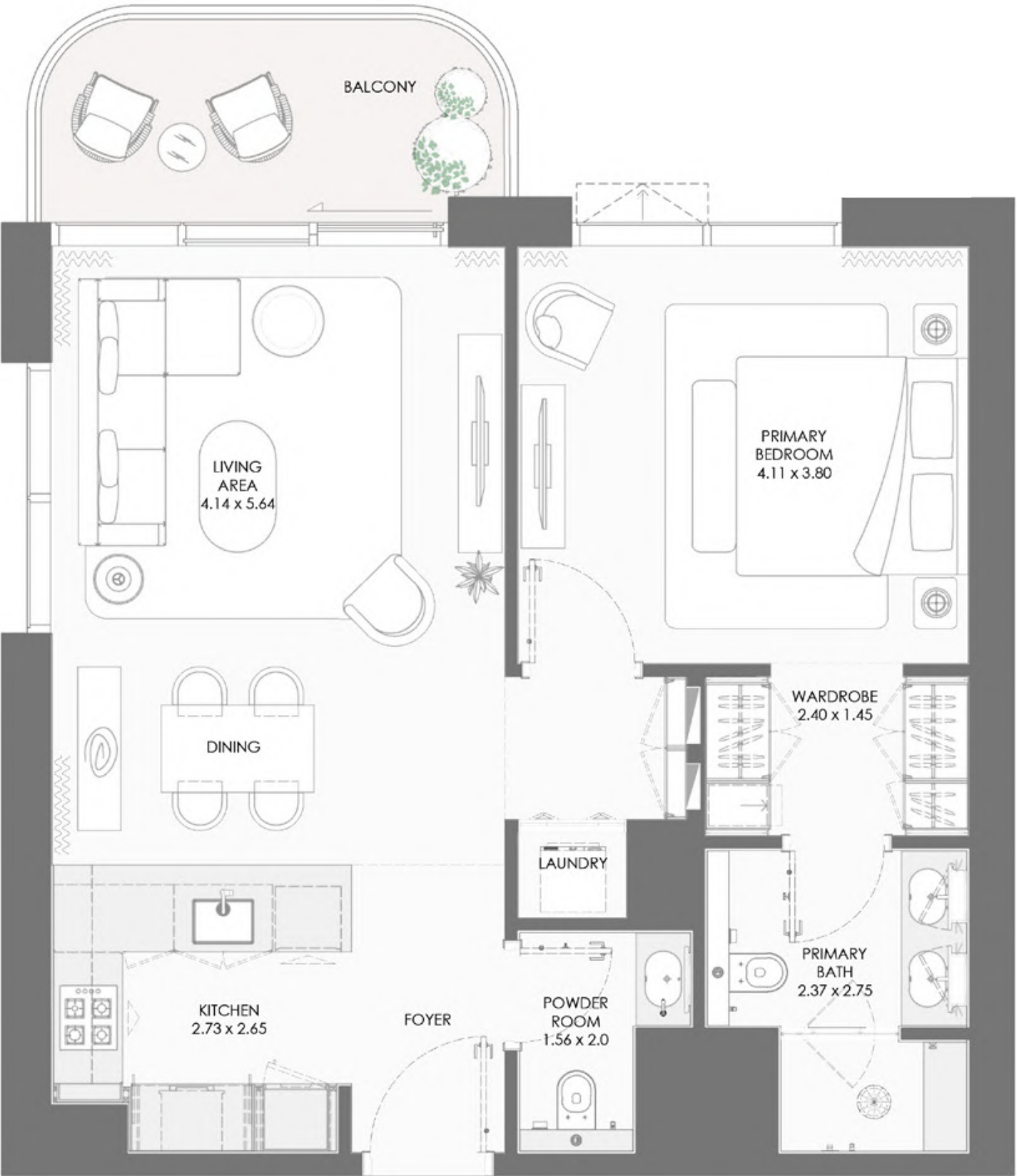


1-bedroom

KEY PLAN



BUILD.	UNIT NUMBER	SUITE AREA NIA		BALCONY AREA		TOTAL AREA NSA	
		SQM	SQFT	SQM	SQFT	SQM	SQFT
10	101 201 301 401 501 601 701 801 901 1001 1101 1201 1301 1401 1501 1601 1701 1801 19011402 1502 1602 1702 1802 1902	72.37	778.98	8.08	86.97	80.45	865.96

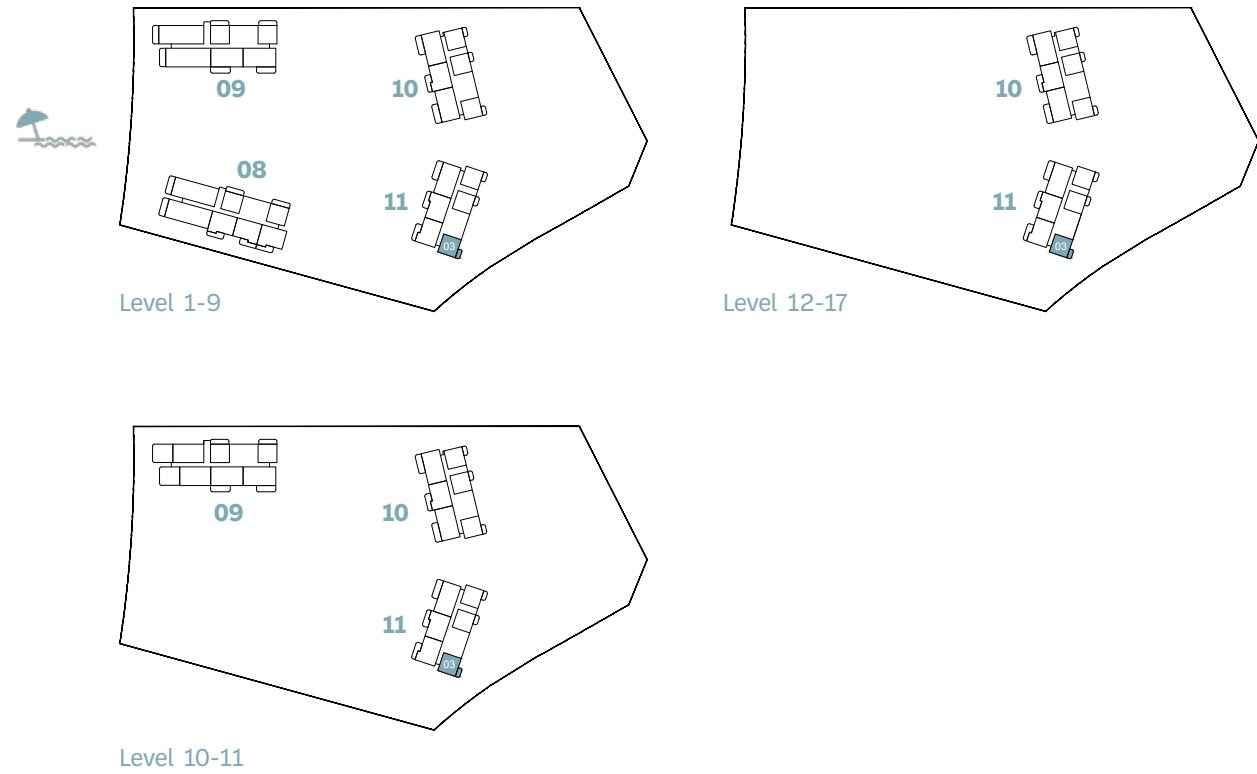


BAYGROVE
RESIDENCES

DUBAI ISLANDS

1-bedroom

KEY PLAN

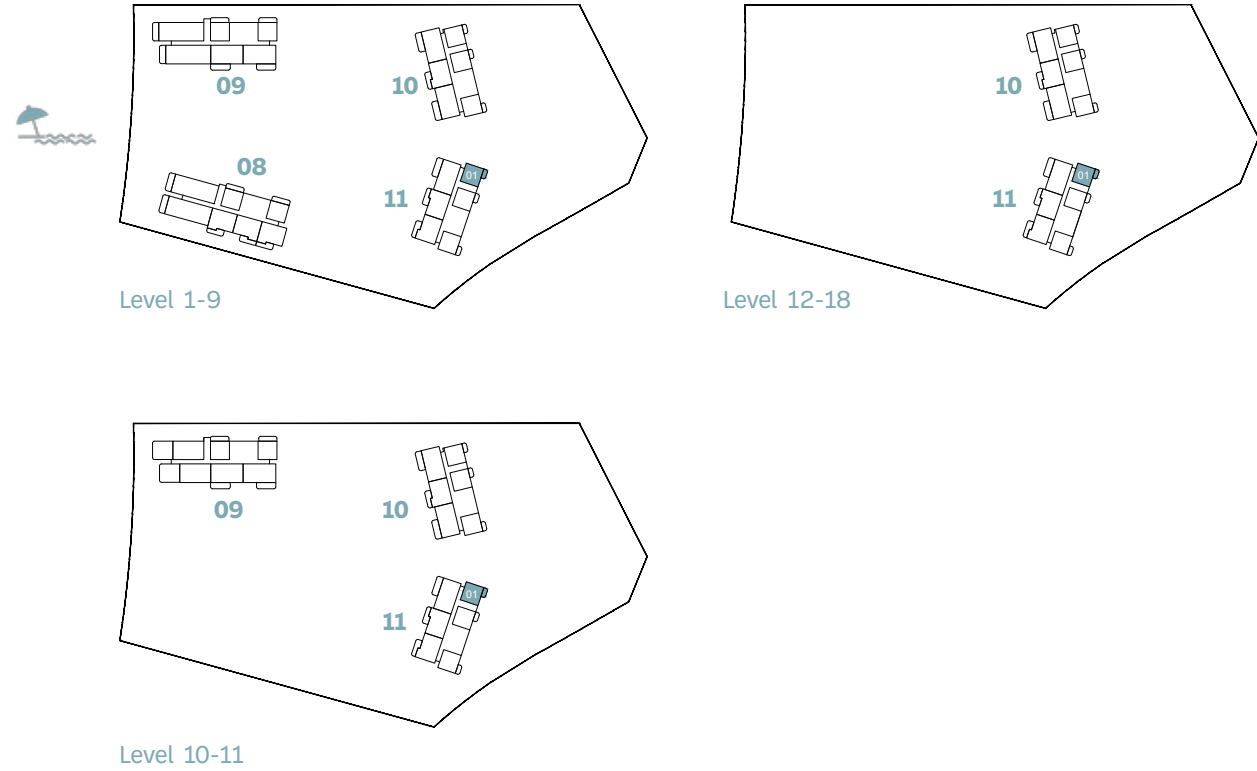


BUILD.	UNIT NUMBER	SUITE AREA NIA		BALCONY AREA		TOTAL AREA NSA	
		SQM	SQFT	SQM	SQFT	SQM	SQFT
11	103 203 303 403 503 603 703 803 903 1003 1103 1203 1303 1403 1503 1603 1703 1402 1502 1602 1702 1802 1902	72.37	778.98	8.21	88.37	80.58	867.36

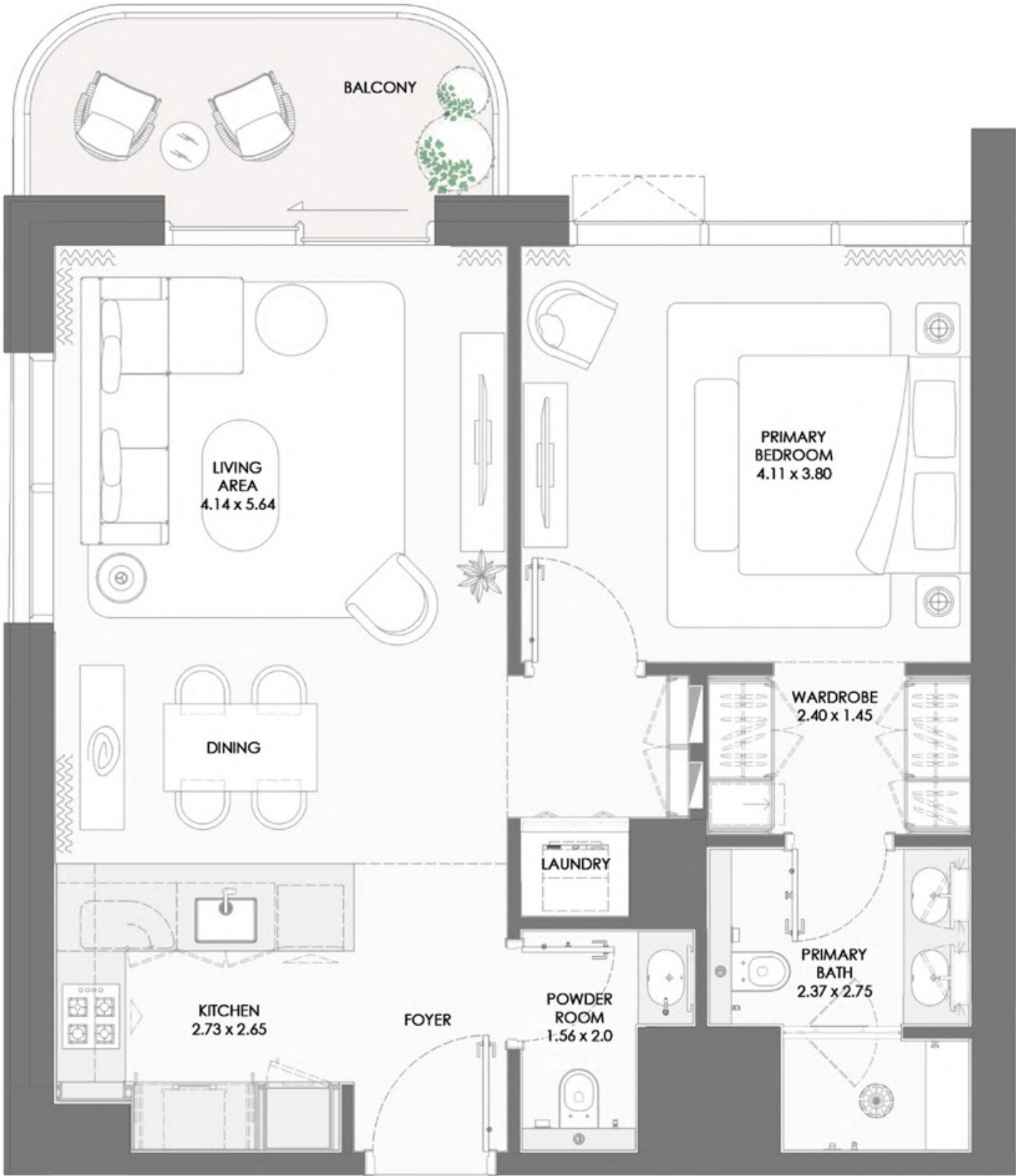


1-bedroom

KEY PLAN



BUILD.	UNIT NUMBER	SUITE AREA NIA		BALCONY AREA		TOTAL AREA NSA	
		SQM	SQFT	SQM	SQFT	SQM	SQFT
11	101 201 301 401 501 601 701 801 901 1001 1101	72.38	779.09	8.21	88.37	80.59	867.46
11	1201 1301 1401 1501 1601 1701	72.38	779.09	8.20	88.26	80.58	867.36
11	1801	72.37	778.98	8.21	88.37	80.58	867.36



BAYGROVE
RESIDENCES

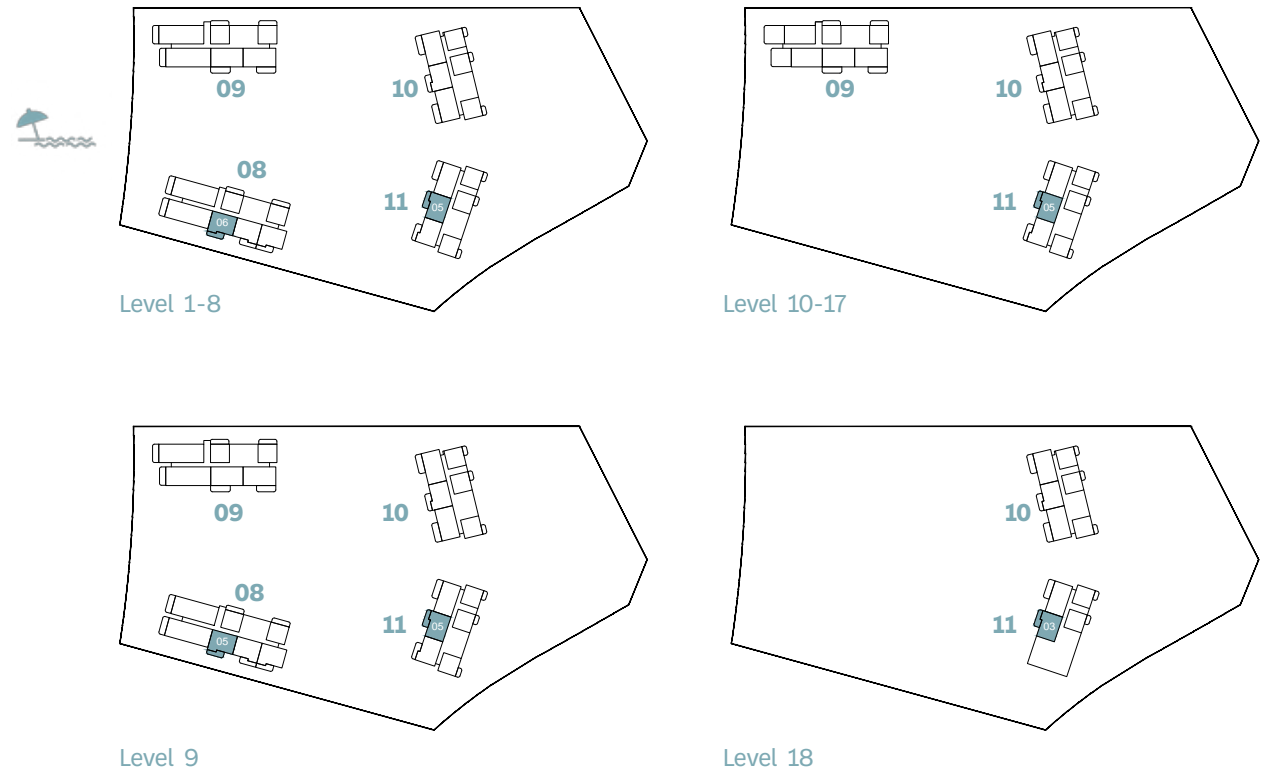
DUBAI ISLANDS



2-bedroom

2-bedroom

KEY PLAN

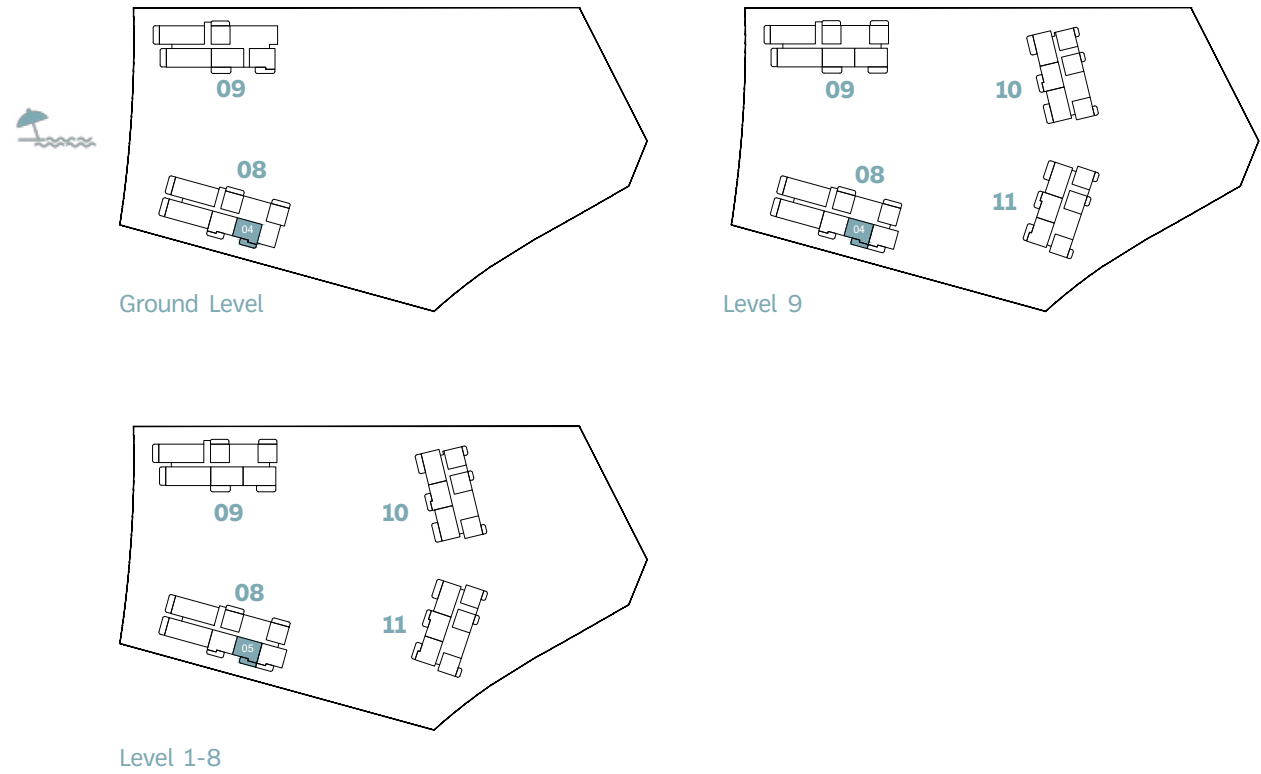


BUILD.	UNIT NUMBER	SUITE AREA NIA		BALCONY AREA		TOTAL AREA NSA	
		SQM	SQFT	SQM	SQFT	SQM	SQFT
8	106 206 306 406 506 606 706	102.49	1103.19	19.08	205.38	121.57	1308.57
8	806	102.46	1102.87	19.06	205.16	121.52	1308.03
8	905	102.48	1103.09	19.06	205.16	121.54	1308.25
11	105 205 305 405 505 605 705 805 905 1005 1105 1205 1305 1405 1505 1605 1705 1803	102.88	1107.39	19.09	205.48	121.97	1312.87



2-bedroom

KEY PLAN

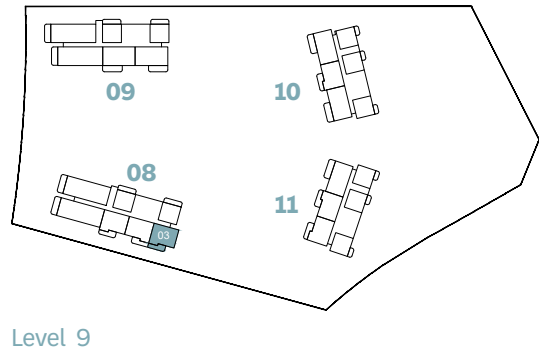
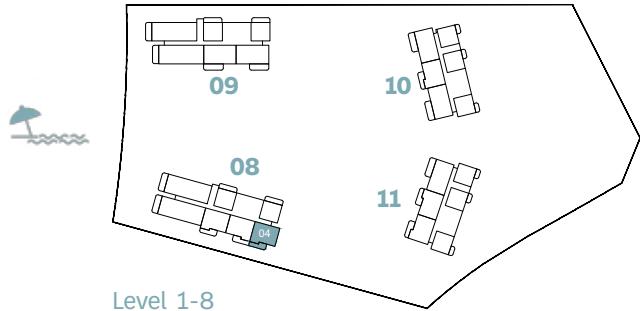


BUILD.	UNIT NUMBER	SUITE AREA NIA		BALCONY AREA		TOTAL AREA NSA	
		SQM	SQFT	SQM	SQFT	SQM	SQFT
8	G04	102.01	1098.03	19.08	205.38	121.09	1303.40
8	105 205 305 405 505 605 705	102.47	1102.98	19.40	208.82	121.87	1311.80
8	805	102.50	1103.30	19.34	208.17	121.84	1311.47
8	904	102.61	1104.48	19.34	208.17	121.95	1312.66



2-bedroom

KEY PLAN



BUILD.	UNIT NUMBER	SUITE AREA NIA		BALCONY AREA		TOTAL AREA NSA	
		SQM	SQFT	SQM	SQFT	SQM	SQFT
8	104 204 304 404 504 604 704	102.53	1103.62	19.19	206.56	121.72	1310.18
8	804	102.81	1106.64	19.24	207.10	122.05	1313.74
8	903	102.83	1106.85	19.24	207.10	122.07	1313.95



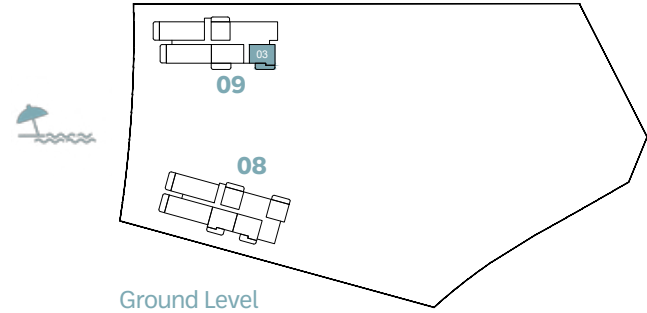
BAYGROVE
RESIDENCES

DUBAI ISLANDS

TYPE D

2-bedroom

KEY PLAN



BUILD.	UNIT NUMBER	SUITE AREA NIA		BALCONY AREA		TOTAL AREA NSA	
		SQM	SQFT	SQM	SQFT	SQM	SQFT
9	G03	102.17	1099.75	22.44	241.54	124.61	1341.29



BAYGROVE
RESIDENCES

DUBAI ISLANDS

NAKHEEL

Disclaimer: All measurements, dimensions, coordinates, and drawings provided as the Floor Plans in the literature are approximate and provided only for the purpose of marketing, illustration, information, and general guidance, as these drawings are not to scale. All the rooms, sizes, locations, orientations, dimensions, fixtures, fittings, finishes, and specifications (including materials, placement, size of rooms, windows, doors, balconies, and built-in wardrobes) provided in the floor plans may vary as the same have been taken from concept designs prior the actual development/construction. Therefore, their accuracy in relation to the completed construction cannot be confirmed. We make no guarantee, warranty, or representation regarding the accuracy and completeness of the floor plan information, as changes may occur during the development process without notice. Always refer to the latest IFC design available in the sales office for the most accurate representation of all construction details.

2-bedroom

KEY PLAN



BUILD.	UNIT NUMBER	SUITE AREA NIA		BALCONY AREA		TOTAL AREA NSA	
		SQM	SQFT	SQM	SQFT	SQM	SQFT
11	104 204 304 404 504 604 704 804 904 1004 1104 1204 1304 1404 1504 1604 1704	102.79	1106.42	19.18	206.45	121.97	1312.87

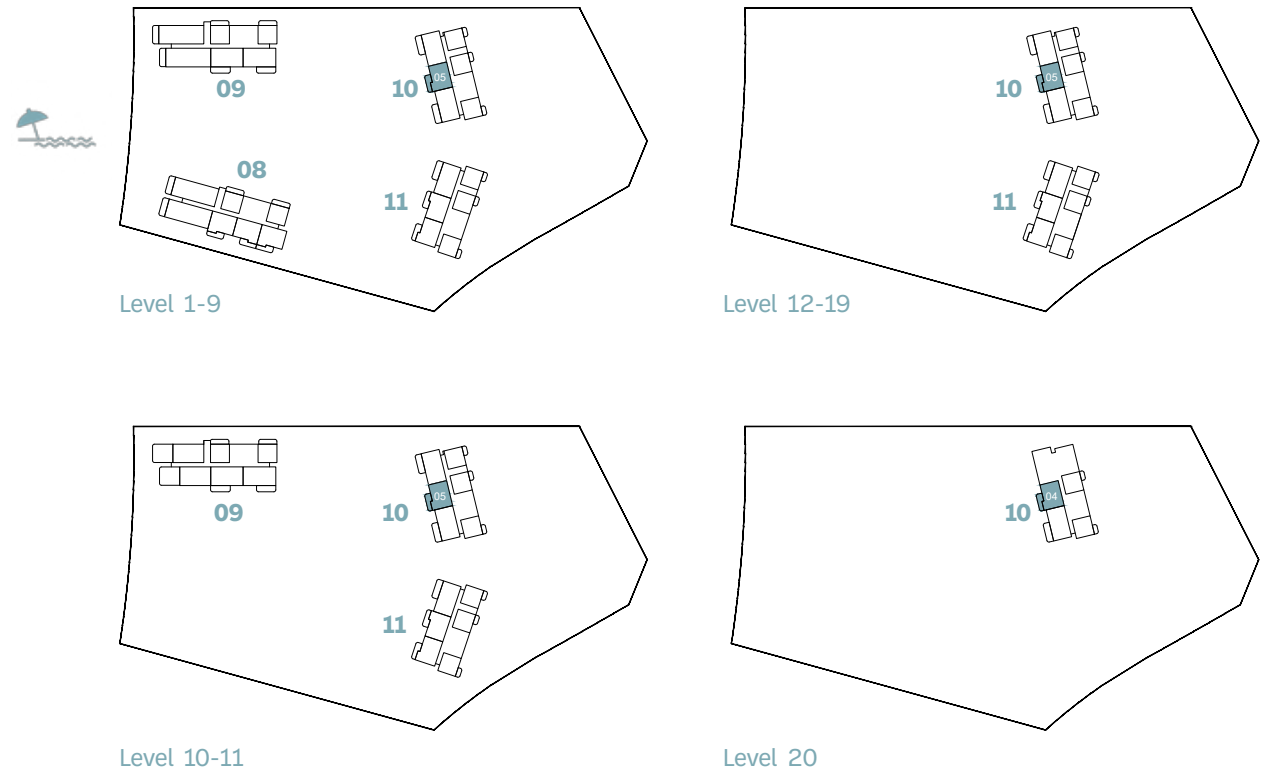


BAYGROVE
RESIDENCES

DUBAI ISLANDS

2-bedroom

KEY PLAN



BUILD.	UNIT NUMBER	SUITE AREA NIA		BALCONY AREA		TOTAL AREA NSA	
		SQM	SQFT	SQM	SQFT	SQM	SQFT
10	105 205 305 405 505 605 705 805 905 1005 1105 1205 1305 1405 1505 1605 1705 1805 1905 2004	102.87	1107.28	19.13	205.91	122.00	1313.20



BAYGROVE
RESIDENCES

DUBAI ISLANDS

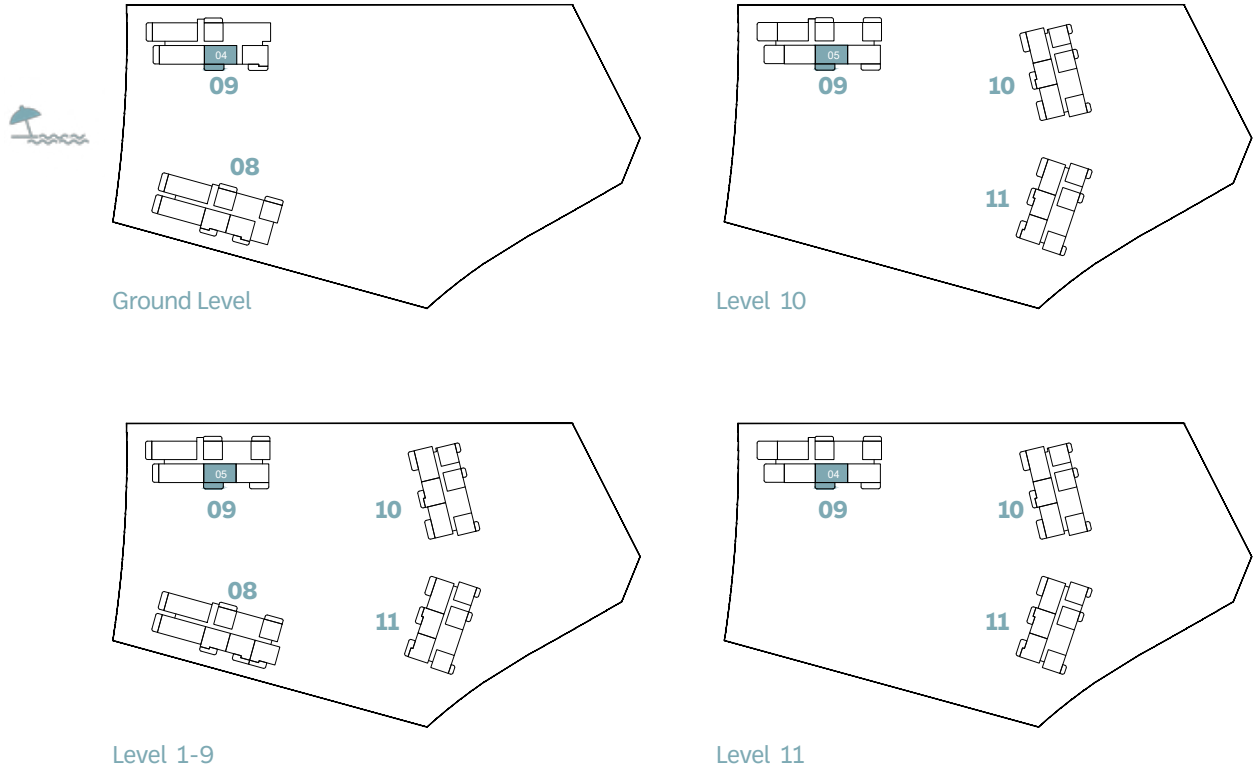
2-bedroom



BAYGROVE
RESIDENCES

DUBAI ISLANDS

KEY PLAN



BUILD.	UNIT NUMBER	SUITE AREA NIA		BALCONY AREA		TOTAL AREA NSA	
		SQM	SQFT	SQM	SQFT	SQM	SQFT
9	G04	123.92	1333.86	26.32	283.31	150.24	1617.17
9	105 205 305 405 505 605 705 805 905	123.91	1333.76	25.74	277.06	149.65	1610.82
9	1005	123.91	1333.76	26.32	283.31	150.23	1617.06
9	1104	123.91	1333.76	26.31	283.20	150.22	1616.95



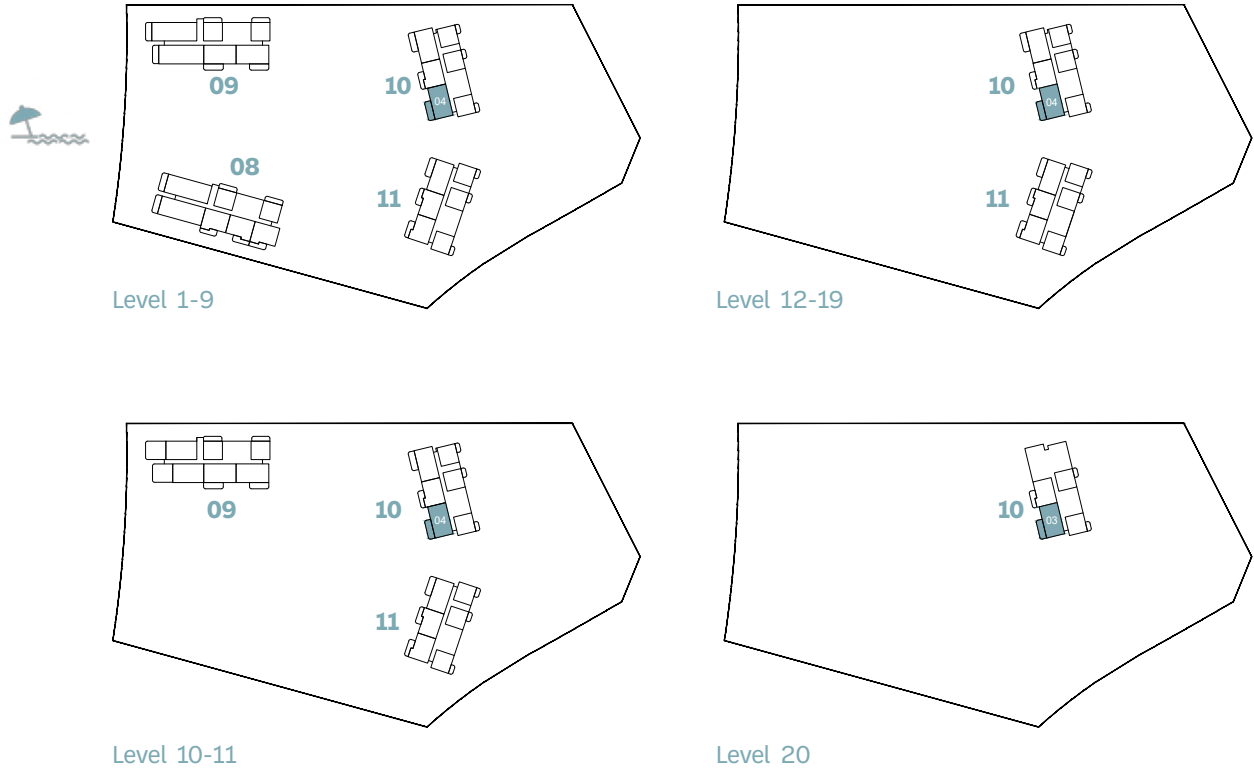
2-bedroom



BAYGROVE
RESIDENCES

DUBAI ISLANDS

KEY PLAN



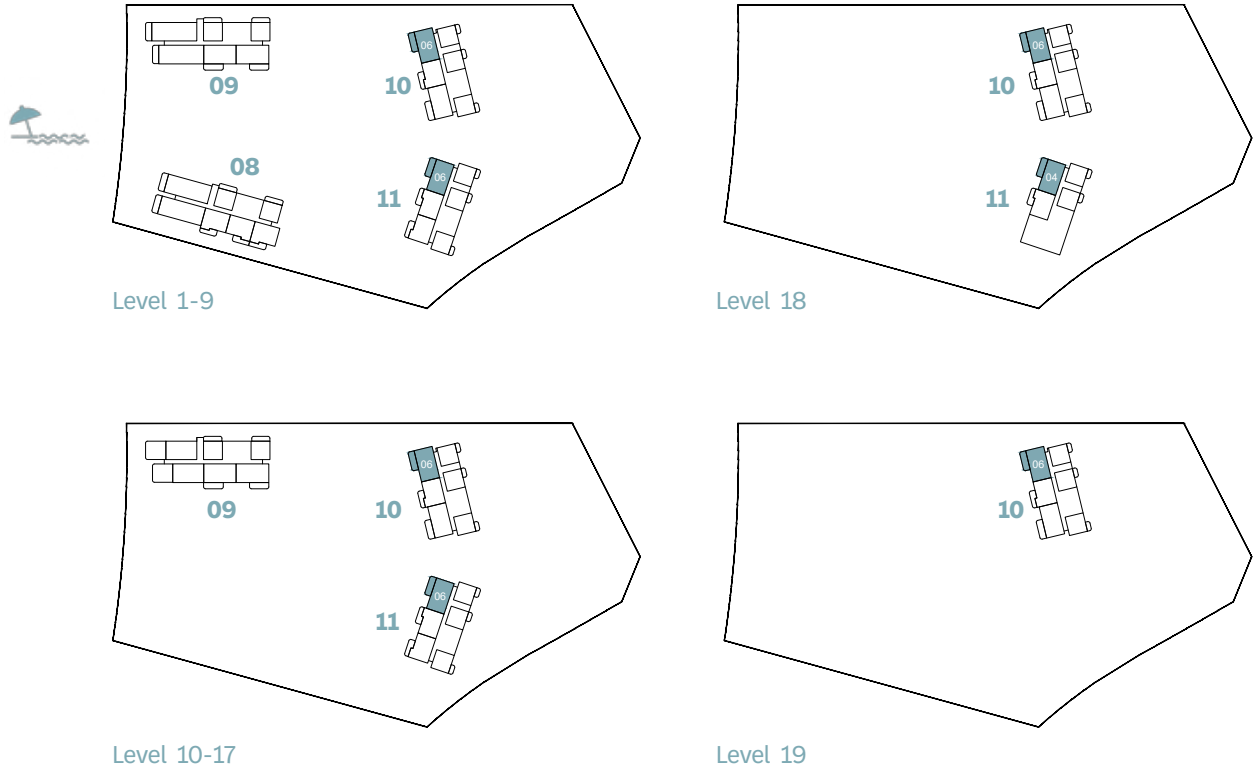
BUILD.	UNIT NUMBER	SUITE AREA NIA		BALCONY AREA		TOTAL AREA NSA	
		SQM	SQFT	SQM	SQFT	SQM	SQFT
10	104 204 304 404 504 604 704 804 904 1004 1104 1204 1304 1404 1504 1604 1704 1804 1904 2003	123.13	1325.36	26.01	279.97	149.14	1605.33



2-bedroom



KEY PLAN

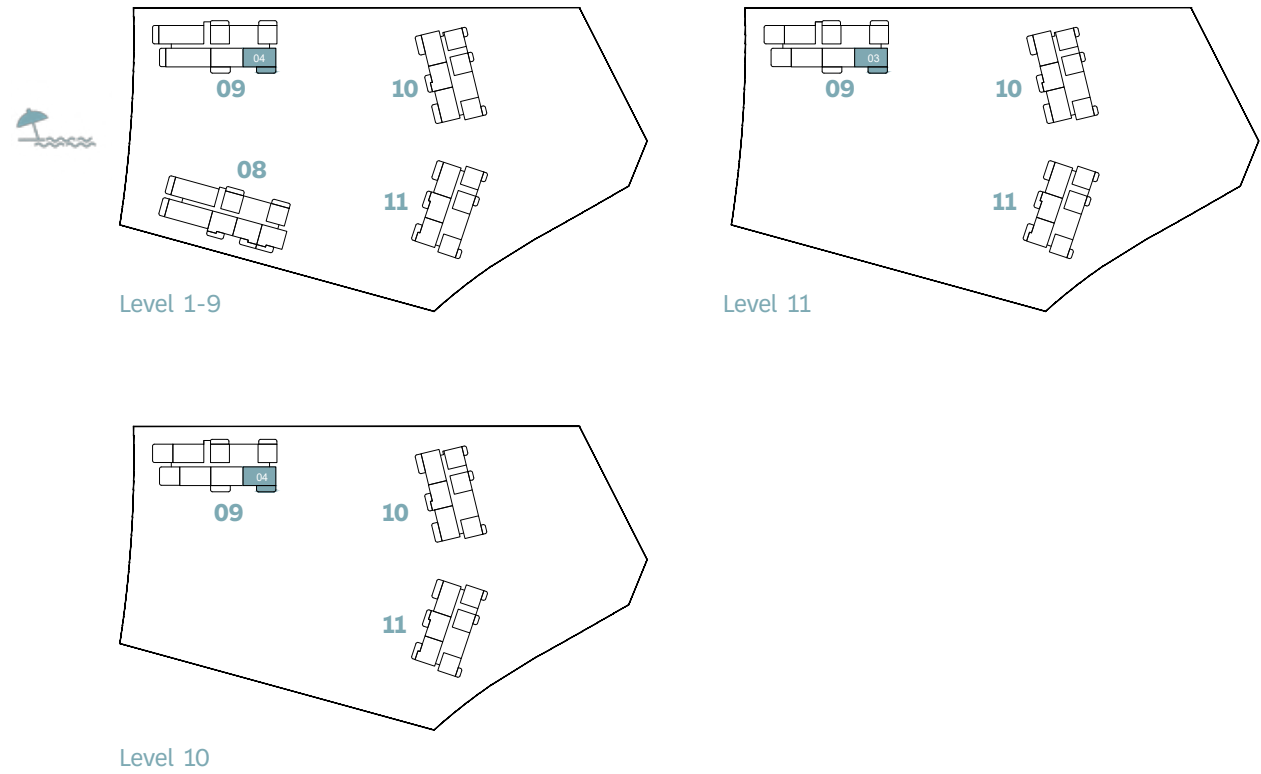


BUILD.	UNIT NUMBER	SUITE AREA NIA		BALCONY AREA		TOTAL AREA NSA	
		SQM	SQFT	SQM	SQFT	SQM	SQFT
10	106 206 306 406 506 606 706 806 906 1006	123.01	1324.07	25.73	276.96	148.74	1601.02
10	1106 1206 1306 1406 1506 1606 1706 1806 1906	123.02	1324.18	25.73	276.96	148.75	1601.13
11	106 206 306 406 506 606 706 806 906 1006 1106 1206 1306 1406 1506 1606 1706 1804	123.13	1325.36	26.93	289.87	150.06	1615.23



2-bedroom

KEY PLAN



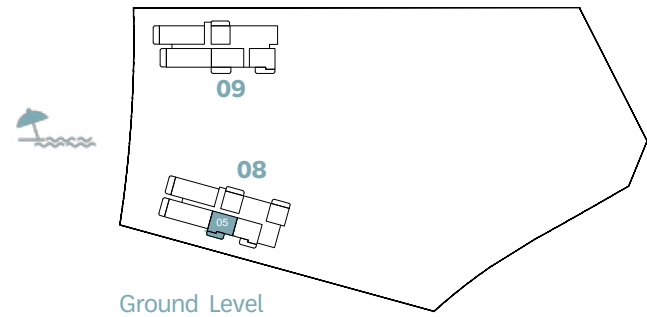
BUILD.	UNIT NUMBER	SUITE AREA NIA		BALCONY AREA		TOTAL AREA NSA	
		SQM	SQFT	SQM	SQFT	SQM	SQFT
9	104 204 304 404 504 604 704 804 904	123.53	1329.67	25.21	271.36	148.74	1601.02
9	1004 1103	123.53	1329.67	26.32	283.31	149.85	1612.97



TYPE K

2-bedroom

KEY PLAN



BUILD.	UNIT NUMBER	SUITE AREA NIA		BALCONY AREA		TOTAL AREA NSA	
		SQM	SQFT	SQM	SQFT	SQM	SQFT
8	G05	102.46	1102.87	19.10	205.59	121.56	1308.46



BAYGROVE
RESIDENCES

DUBAI ISLANDS

NAKHEEL

Disclaimer: All measurements, dimensions, coordinates, and drawings provided as the Floor Plans in the literature are approximate and provided only for the purpose of marketing, illustration, information, and general guidance, as these drawings are not to scale. All the rooms, sizes, locations, orientations, dimensions, fixtures, fittings, finishes, and specifications (including materials, placement, size of rooms, windows, doors, balconies, and built-in wardrobes) provided in the floor plans may vary as the same have been taken from concept designs prior the actual development/construction. Therefore, their accuracy in relation to the completed construction cannot be confirmed. We make no guarantee, warranty, or representation regarding the accuracy and completeness of the floor plan information, as changes may occur during the development process without notice. Always refer to the latest IFC design available in the sales office for the most accurate representation of all construction details.



3-bedroom

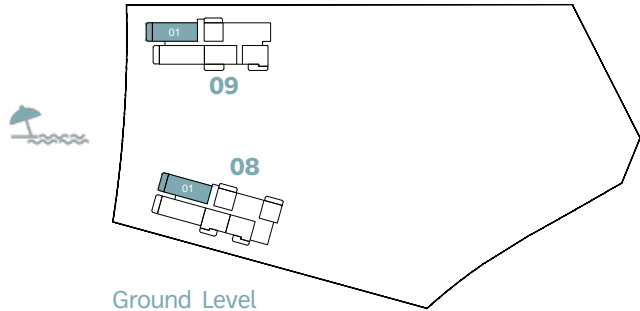
3-bedroom



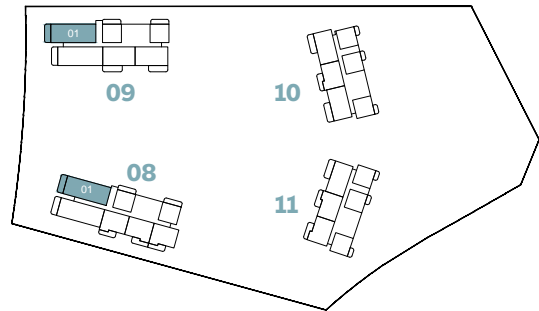
BAYGROVE
RESIDENCES

DUBAI ISLANDS

KEY PLAN



Ground Level



Level 1-9

BUILD.	UNIT NUMBER	SUITE AREA NIA		BALCONY AREA		TOTAL AREA NSA	
		SQM	SQFT	SQM	SQFT	SQM	SQFT
8	G01	171.28	1843.64	24.17	260.16	195.45	2103.81
8	101 201 301 401 501 601 701	171.07	1841.38	24.83	267.27	195.90	2108.65
9	G01	171.28	1843.64	24.06	258.98	195.34	2102.62
9	101 201 301 401 501 601 701 801 901	171.32	1844.07	24.06	258.98	195.38	2103.05



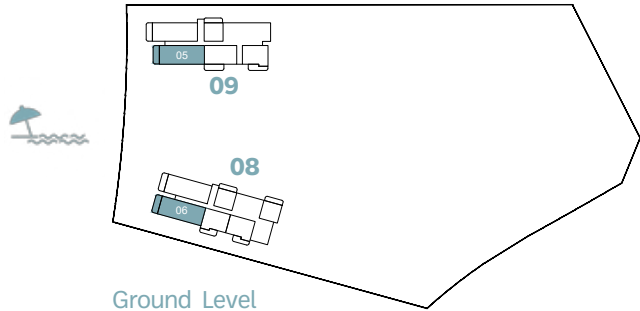
3-bedroom



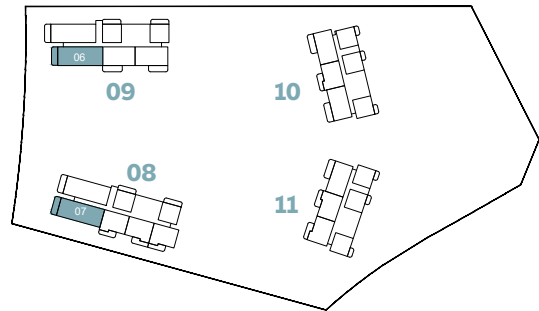
BAYGROVE
RESIDENCES

DUBAI ISLANDS

KEY PLAN



Ground Level



Level 1-9

BUILD.	UNIT NUMBER	SUITE AREA NIA		BALCONY AREA		TOTAL AREA NSA	
		SQM	SQFT	SQM	SQFT	SQM	SQFT
8	G06	170.86	1839.12	23.32	251.01	194.18	2090.14
8	107	170.93	1839.88	23.34	251.23	194.27	2091.10
8	207 307 407 507 607 707	170.94	1839.98	23.34	251.23	194.28	2091.21
9	G05	171.27	1843.53	24.08	259.19	195.35	2102.73
9	106 206 306 406 506 606 706 806 906	171.30	1843.86	24.17	260.16	195.47	2104.02

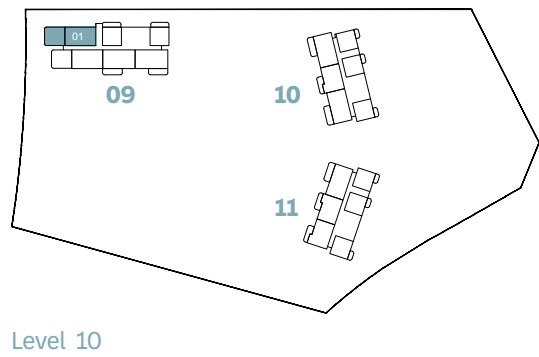
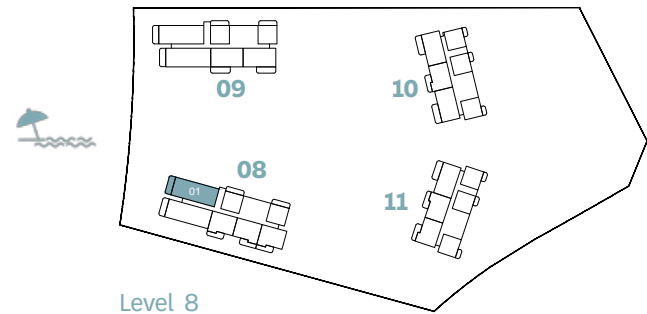




4-bedroom

4-bedroom

KEY PLAN



BUILD.	UNIT NUMBER	SUITE AREA NIA		BALCONY AREA		TOTAL AREA NSA	
		SQM	SQFT	SQM	SQFT	SQM	SQFT
8	801	237.59	2557.40	67.08	722.04	304.67	3279.44
9	1001	237.48	2556.21	75.76	815.47	313.24	3371.69

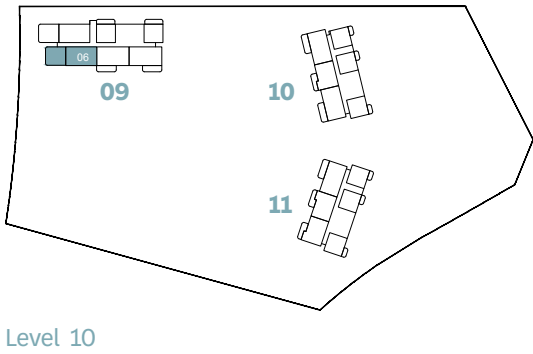
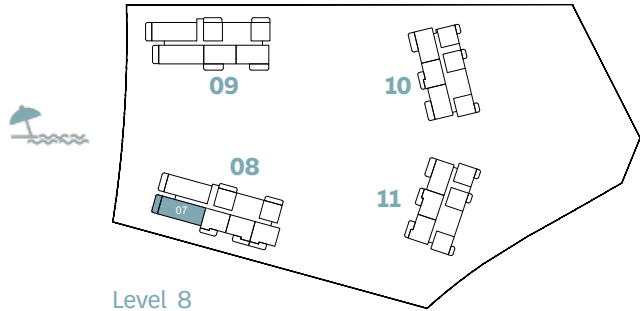


BAYGROVE
RESIDENCES

DUBAI ISLANDS

4-bedroom

KEY PLAN



Build.	Unit Number	Suite Area NIA		Balcony Area		Total Area NSA	
		SQM	SQFT	SQM	SQFT	SQM	SQFT
8	807	235.97	2539.96	66.01	710.53	301.98	3250.49
9	1006	237.44	2555.78	76.80	826.67	314.24	3382.45



BAYGROVE
RESIDENCES

DUBAI ISLANDS