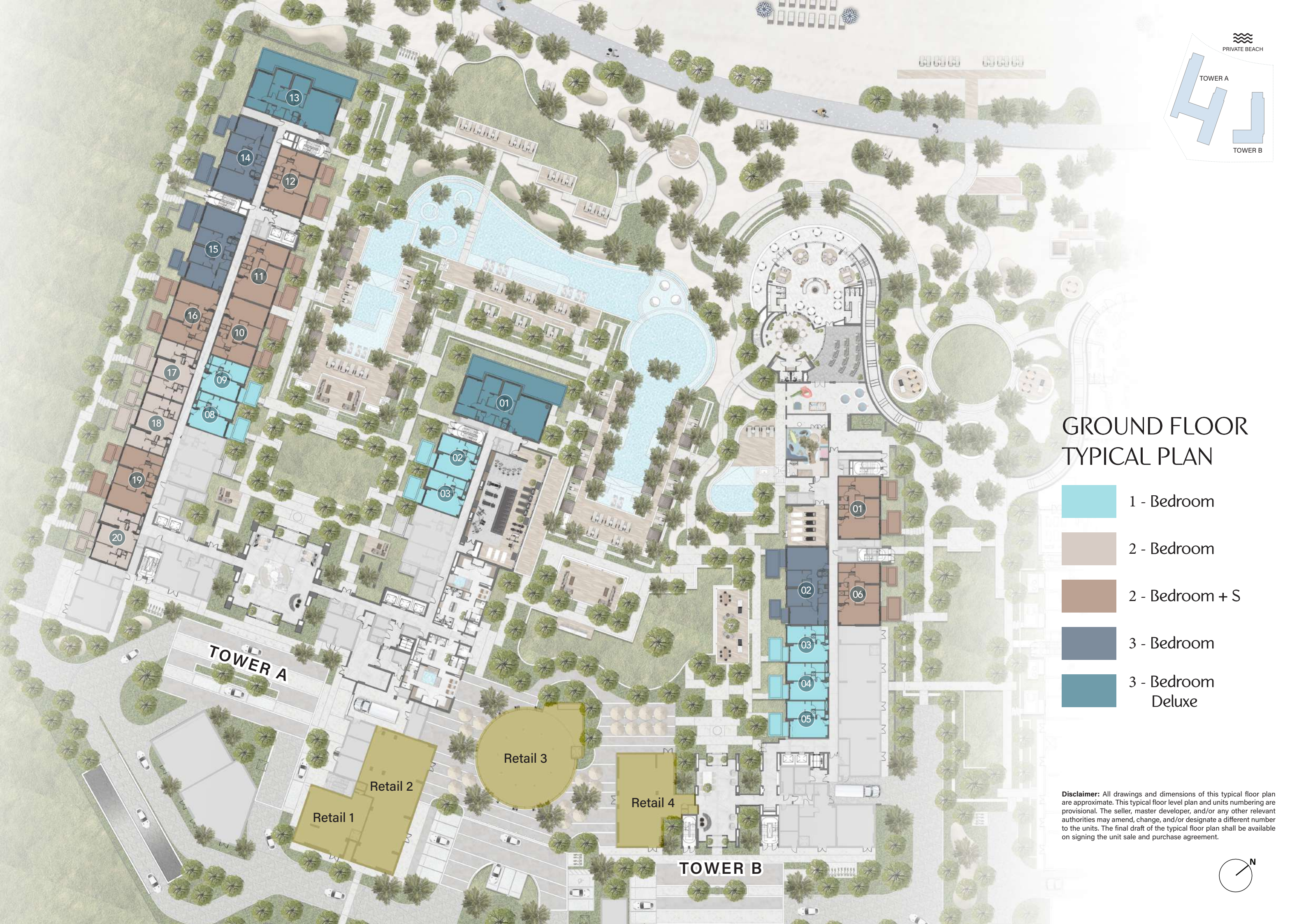
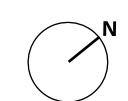


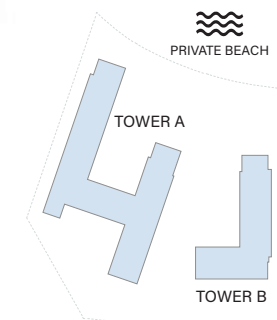
# GROUND FLOOR TYPICAL PLAN

- 1 - Bedroom
- 2 - Bedroom
- 2 - Bedroom + S
- 3 - Bedroom
- 3 - Bedroom Deluxe

**Disclaimer:** All drawings and dimensions of this typical floor plan are approximate. This typical floor level plan and units numbering are provisional. The seller, master developer, and/or any other relevant authorities may amend, change, and/or designate a different number to the units. The final draft of the typical floor plan shall be available on signing the unit sale and purchase agreement.



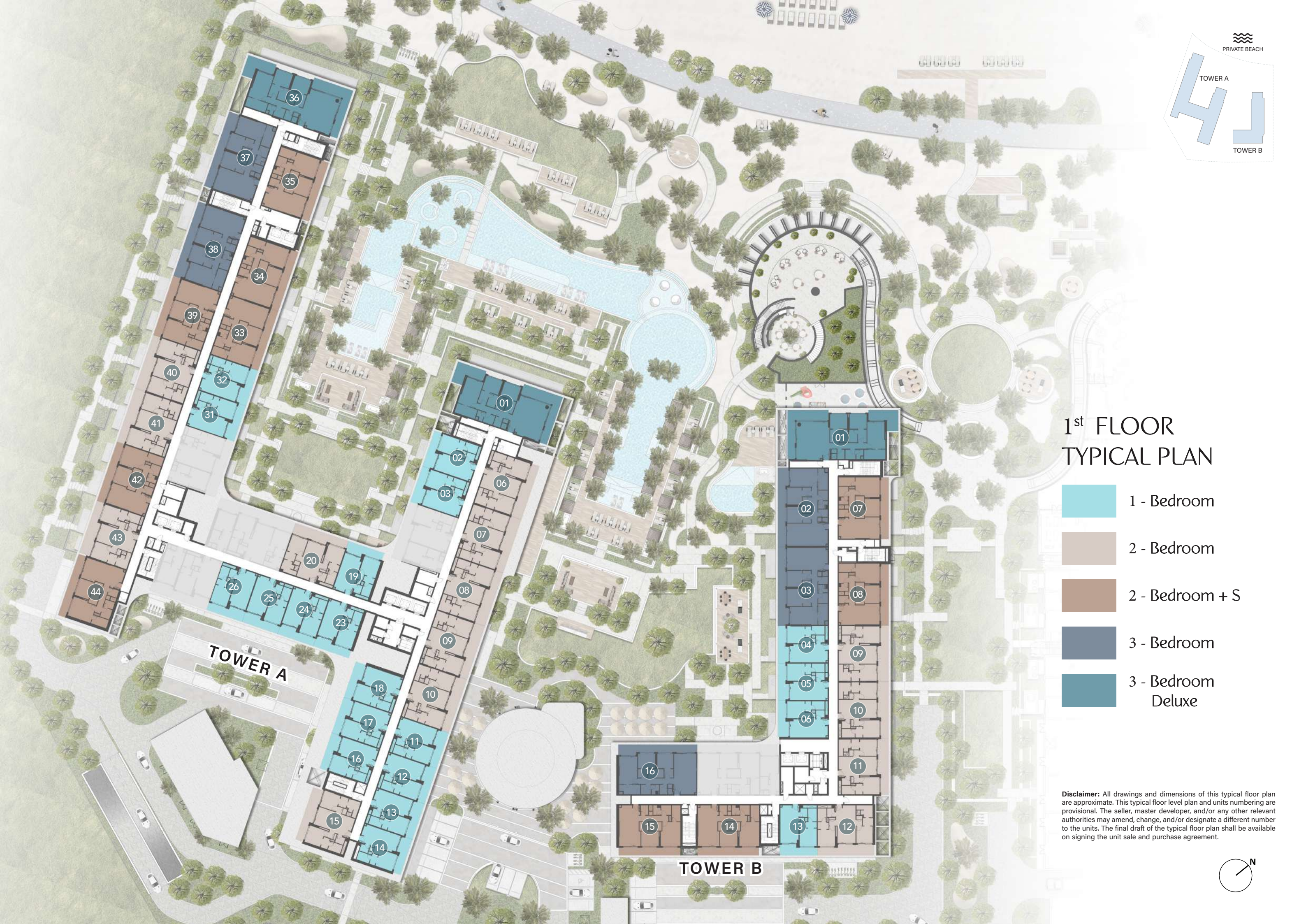




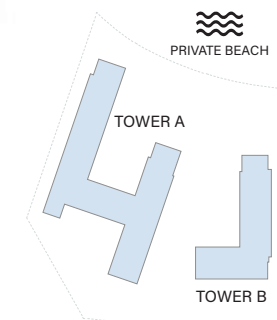
## 1<sup>st</sup> FLOOR TYPICAL PLAN

- 1 - Bedroom
- 2 - Bedroom
- 2 - Bedroom + S
- 3 - Bedroom
- 3 - Bedroom  
Deluxe

**Disclaimer:** All drawings and dimensions of this typical floor plan are approximate. This typical floor level plan and units numbering are provisional. The seller, master developer, and/or any other relevant authorities may amend, change, and/or designate a different number to the units. The final draft of the typical floor plan shall be available on signing the unit sale and purchase agreement.



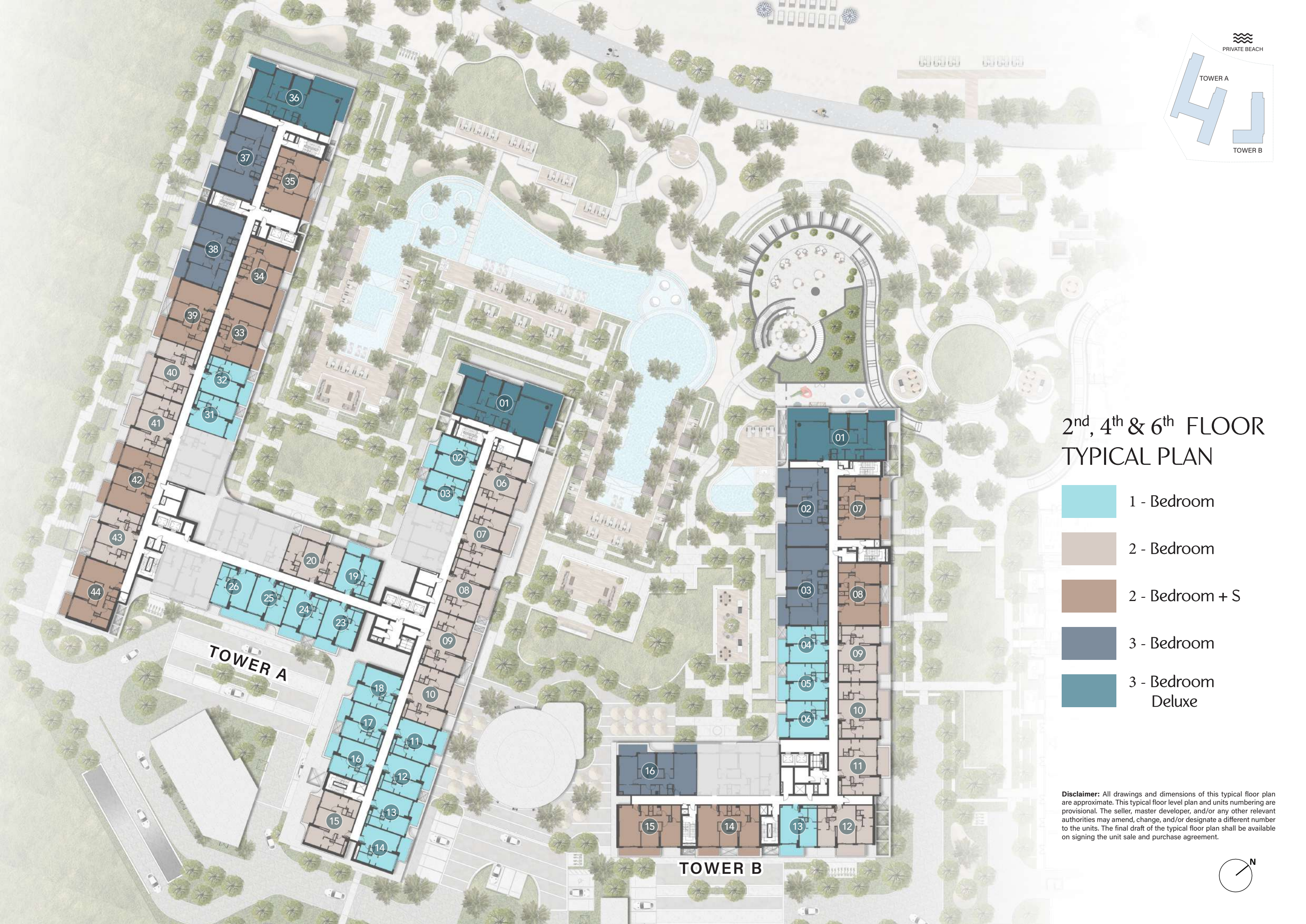




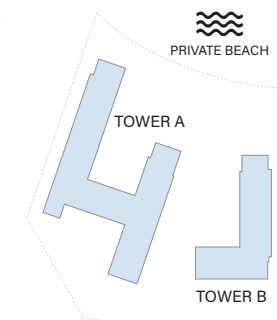
## 2<sup>nd</sup>, 4<sup>th</sup> & 6<sup>th</sup> FLOOR TYPICAL PLAN

- 1 - Bedroom
- 2 - Bedroom
- 2 - Bedroom + S
- 3 - Bedroom
- 3 - Bedroom  
Deluxe

**Disclaimer:** All drawings and dimensions of this typical floor plan are approximate. This typical floor level plan and units numbering are provisional. The seller, master developer, and/or any other relevant authorities may amend, change, and/or designate a different number to the units. The final draft of the typical floor plan shall be available on signing the unit sale and purchase agreement.







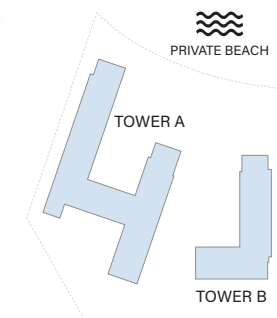
## 3<sup>th</sup> & 5<sup>th</sup> FLOOR TYPICAL PLAN

- 1 - Bedroom
- 2 - Bedroom
- 2 - Bedroom + S
- 3 - Bedroom
- 3 - Bedroom  
Deluxe

**Disclaimer:** All drawings and dimensions of this typical floor plan are approximate. This typical floor level plan and units numbering are provisional. The seller, master developer, and/or any other relevant authorities may amend, change, and/or designate a different number to the units. The final draft of the typical floor plan shall be available on signing the unit sale and purchase agreement.







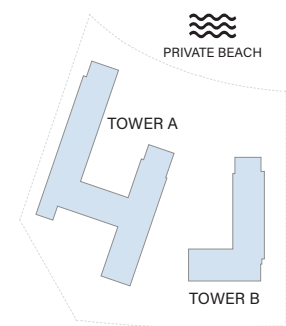
## 7<sup>th</sup> FLOOR TYPICAL PLAN

- 1 - Bedroom
- 2 - Bedroom
- 2 - Bedroom + S
- 3 - Bedroom
- 3 - Bedroom  
Deluxe
- 4 - Bedroom  
Penthouse

**Disclaimer:** All drawings and dimensions of this typical floor plan are approximate. This typical floor level plan and units numbering are provisional. The seller, master developer, and/or any other relevant authorities may amend, change, and/or designate a different number to the units. The final draft of the typical floor plan shall be available on signing the unit sale and purchase agreement.



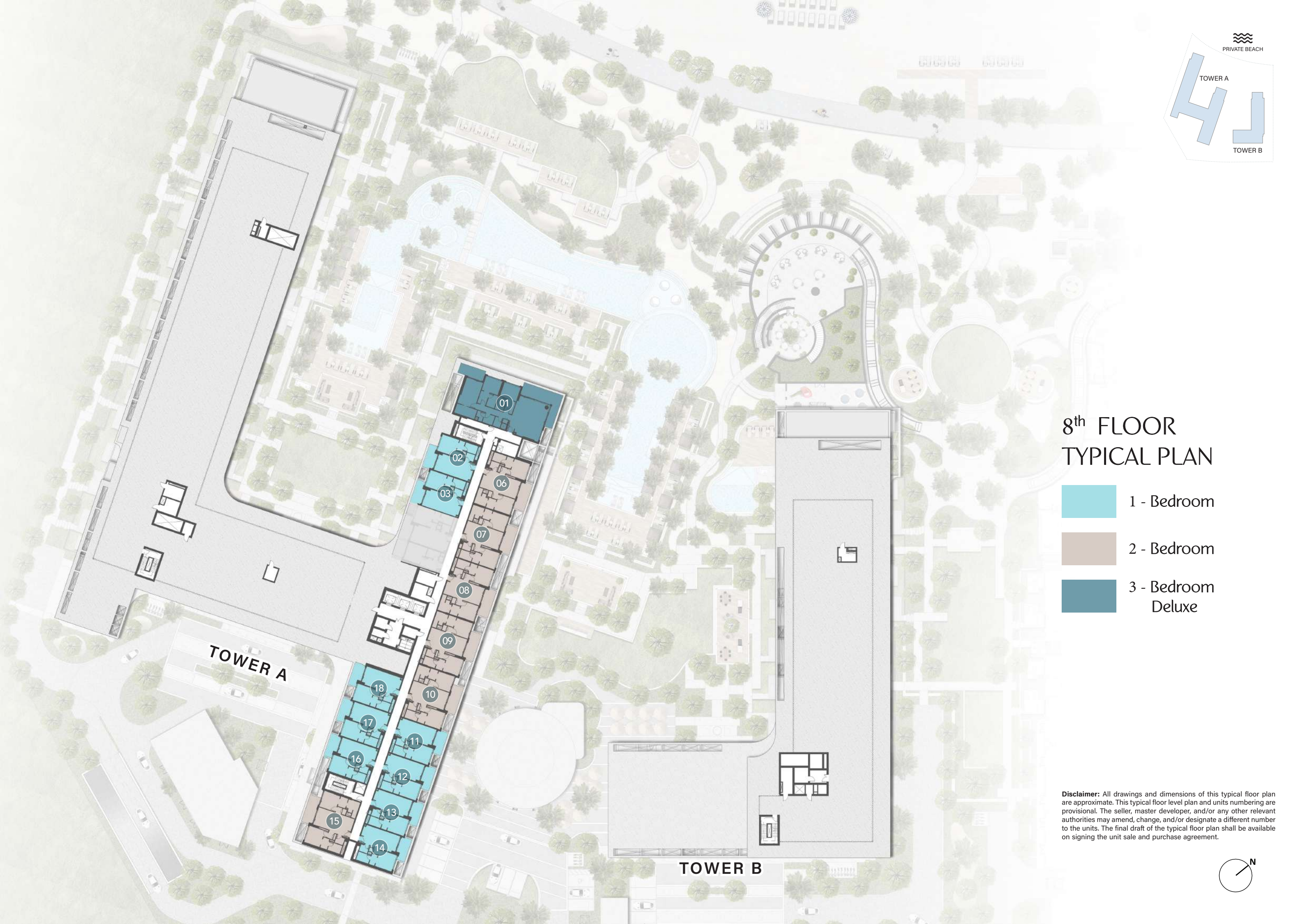
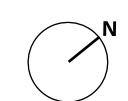




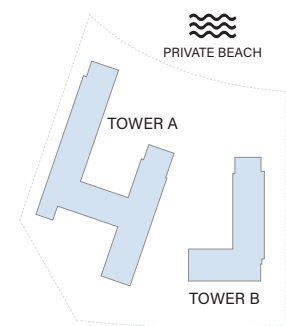
# 8<sup>th</sup> FLOOR TYPICAL PLAN

- 1 - Bedroom
- 2 - Bedroom
- 3 - Bedroom Deluxe

**Disclaimer:** All drawings and dimensions of this typical floor plan are approximate. This typical floor level plan and units numbering are provisional. The seller, master developer, and/or any other relevant authorities may amend, change, and/or designate a different number to the units. The final draft of the typical floor plan shall be available on signing the unit sale and purchase agreement.



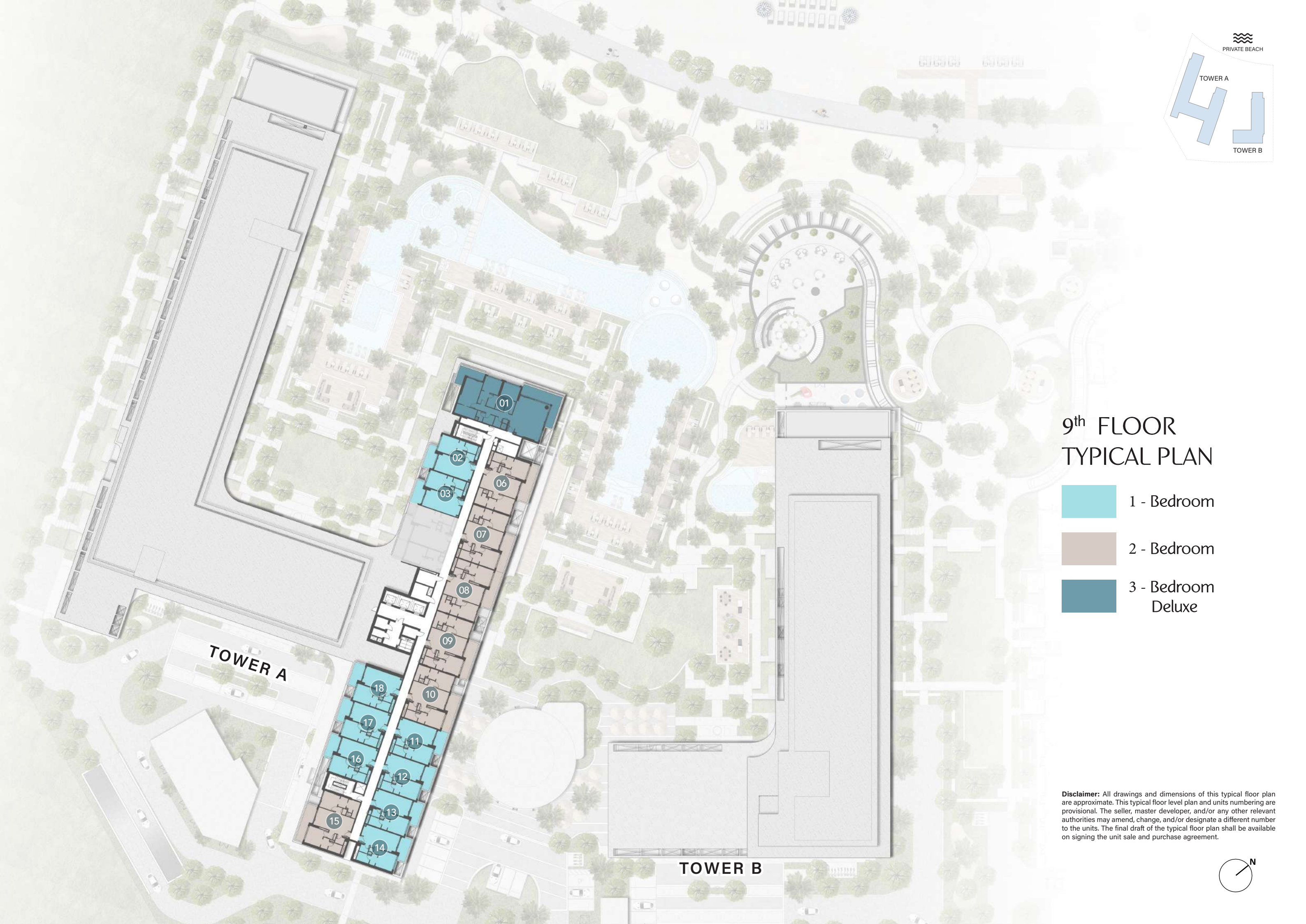
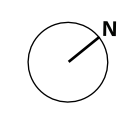




# 9<sup>th</sup> FLOOR TYPICAL PLAN

- 1 - Bedroom
- 2 - Bedroom
- 3 - Bedroom Deluxe

**Disclaimer:** All drawings and dimensions of this typical floor plan are approximate. This typical floor level plan and units numbering are provisional. The seller, master developer, and/or any other relevant authorities may amend, change, and/or designate a different number to the units. The final draft of the typical floor plan shall be available on signing the unit sale and purchase agreement.

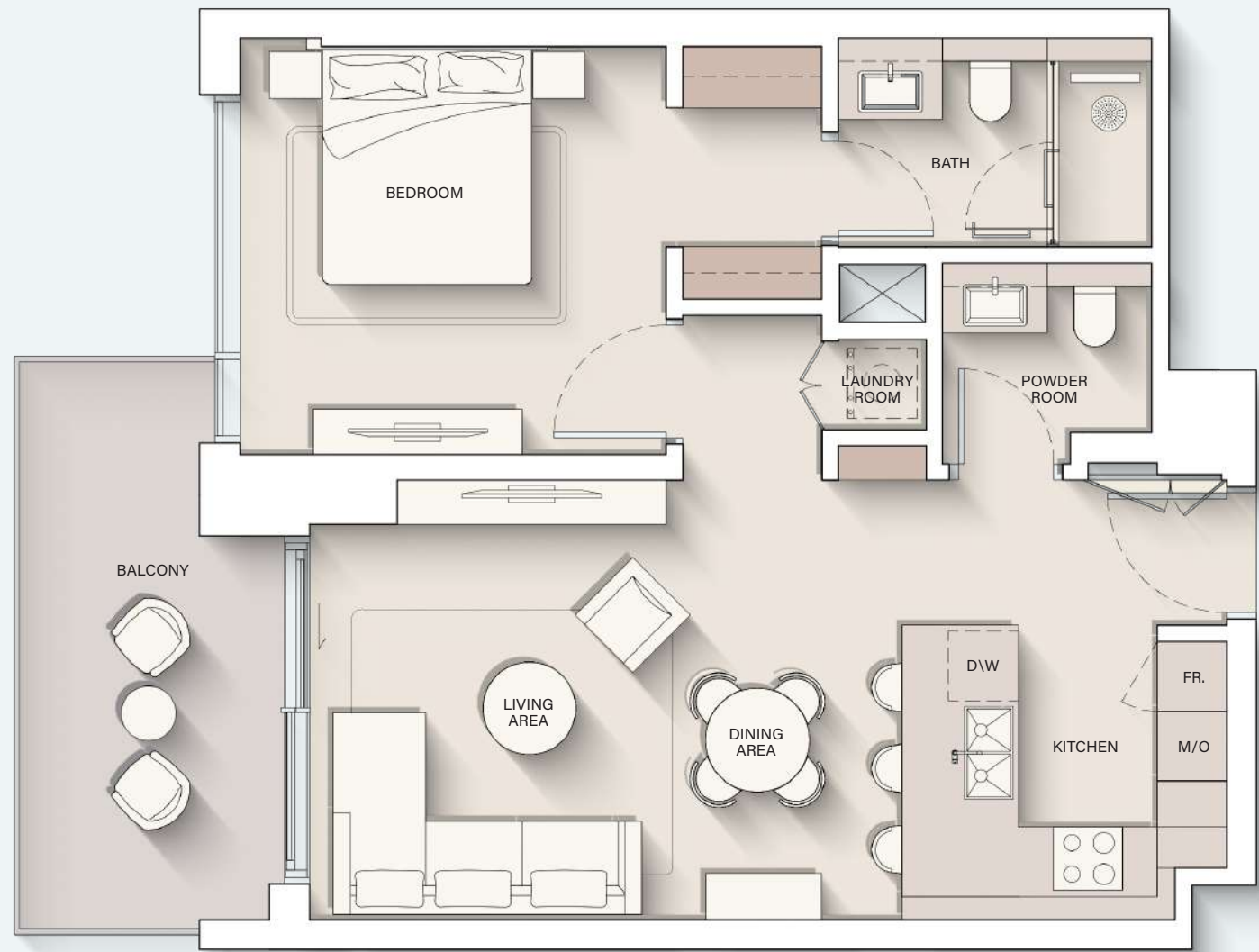


TOWER A

TOWER B



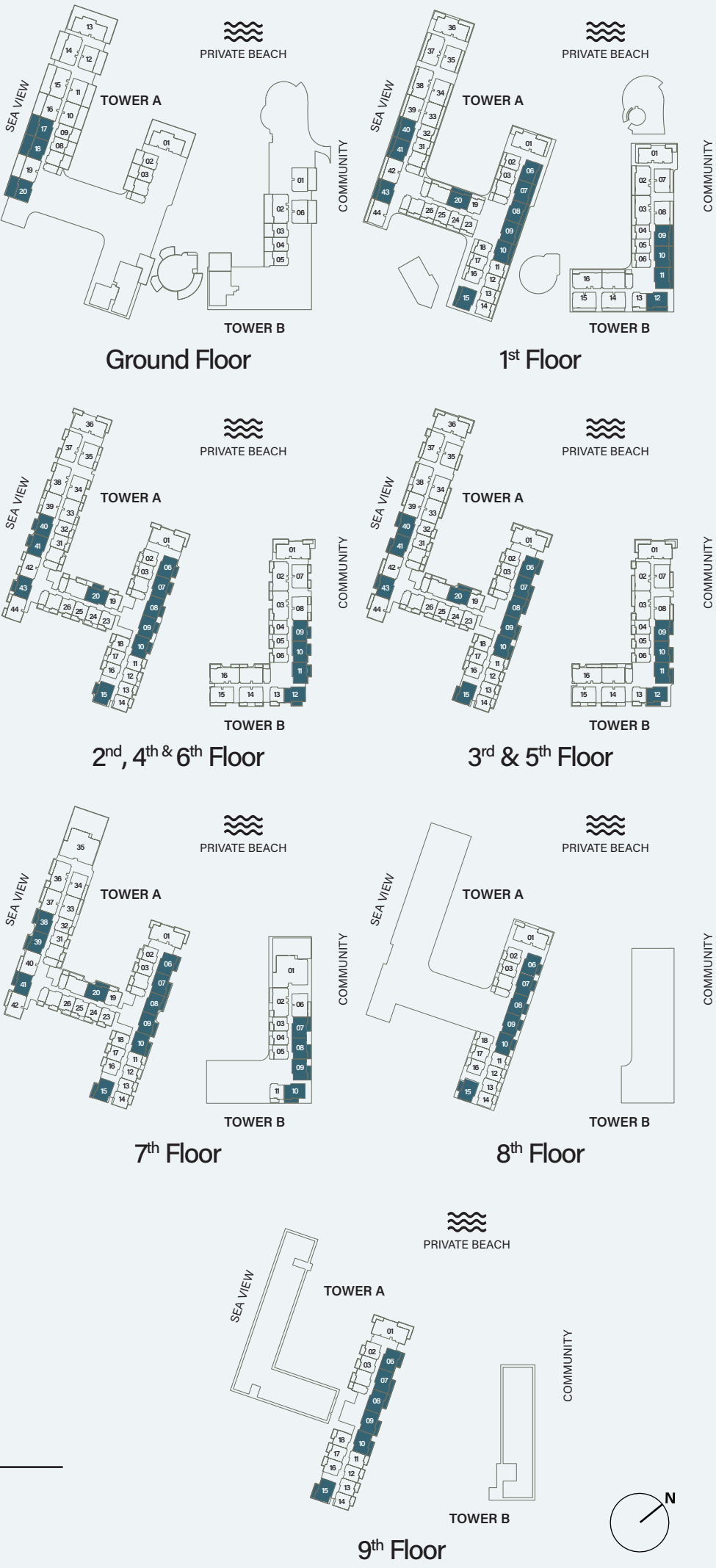
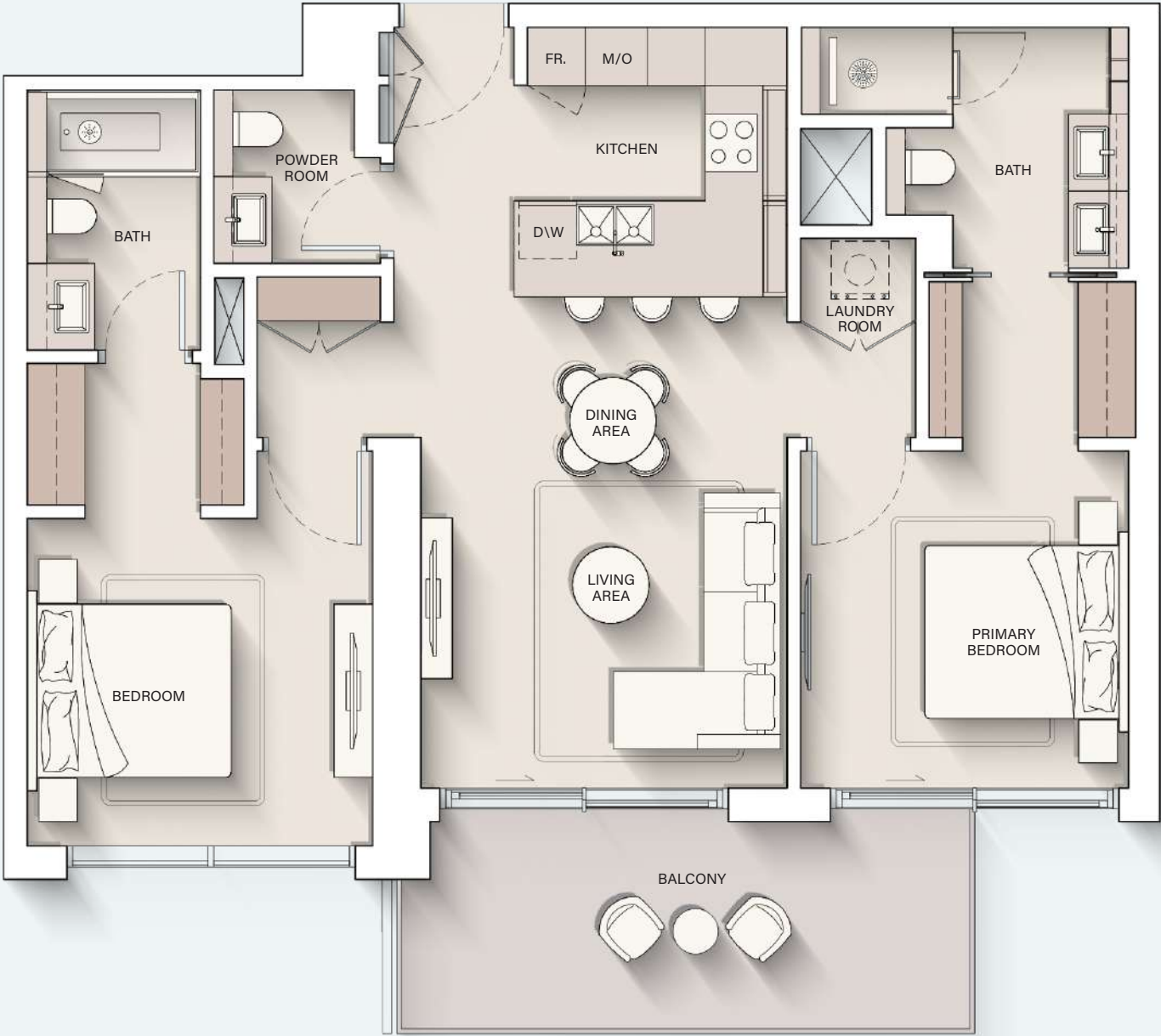
# 1 - BEDROOM



Internal Living Area : **692.44 sq. ft**      Outdoor Living Area : **123.68 sq. ft**      Total Living Area : **816.12 sq. ft**



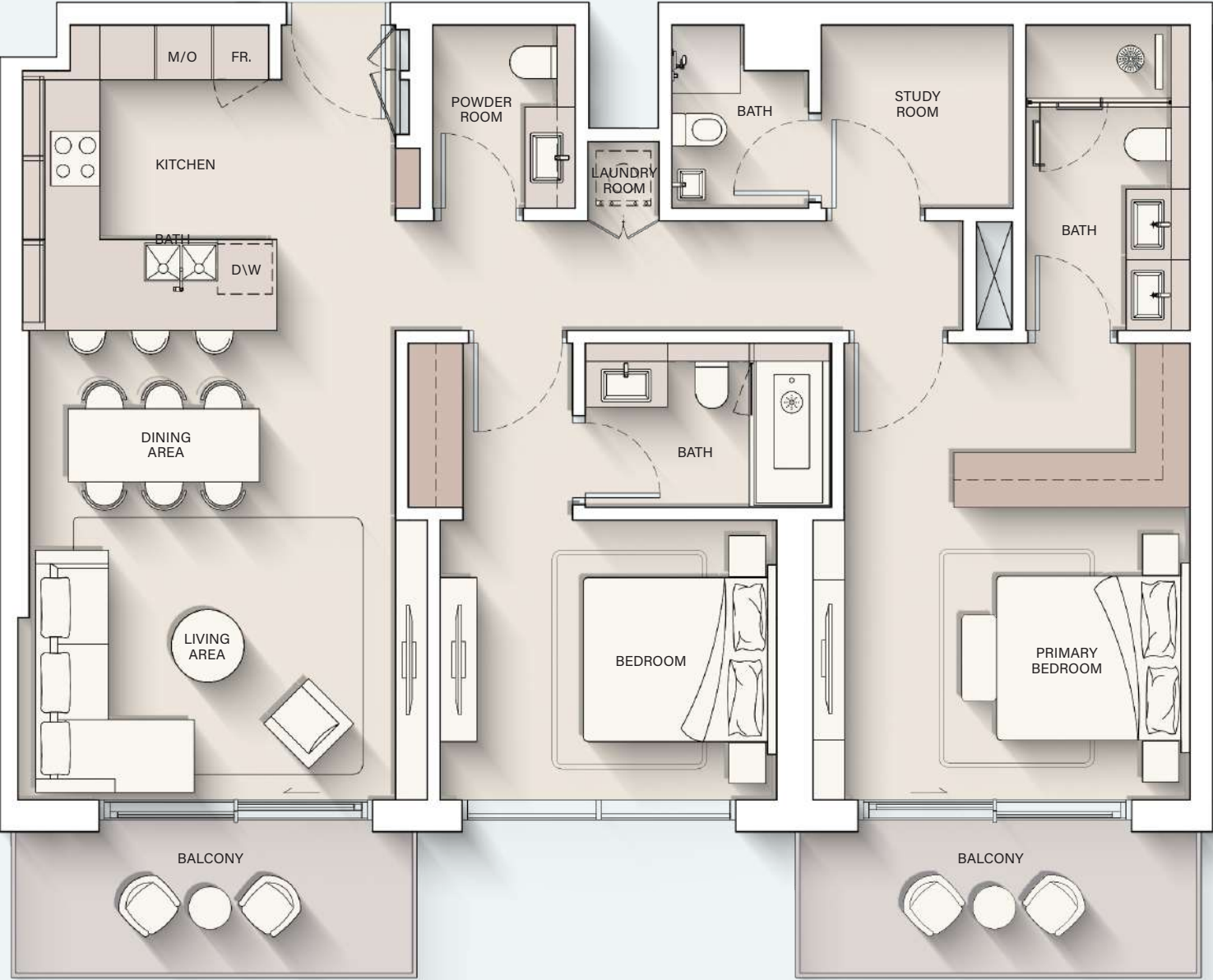
# 2 - BEDROOM



Internal Living Area : 1017.94 sq. ft      Outdoor Living Area : 154.35 sq. ft      Total Living Area : 1172.30 sq. ft



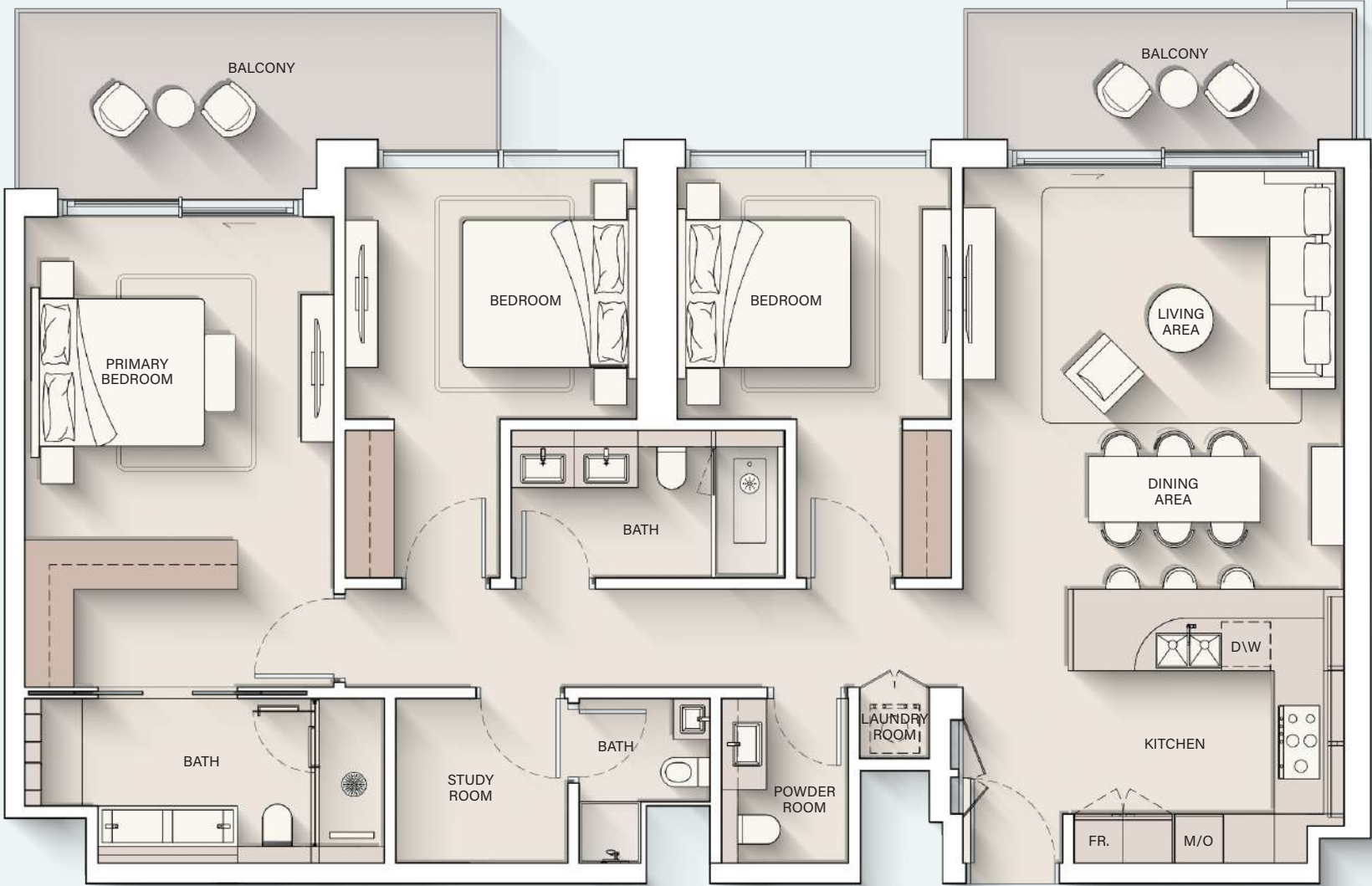
# 2 - BEDROOM + S



Internal Living Area : 1231.07 sq. ft      Outdoor Living Area : 168.13 sq. ft      Total Living Area : 1399.20 sq. ft



# 3 - BEDROOM



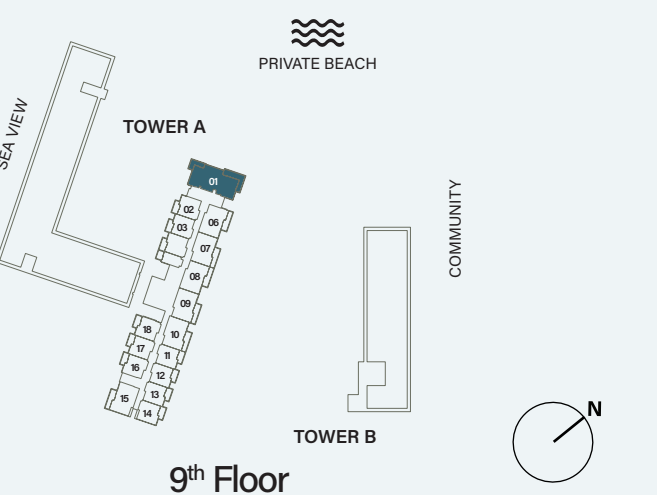
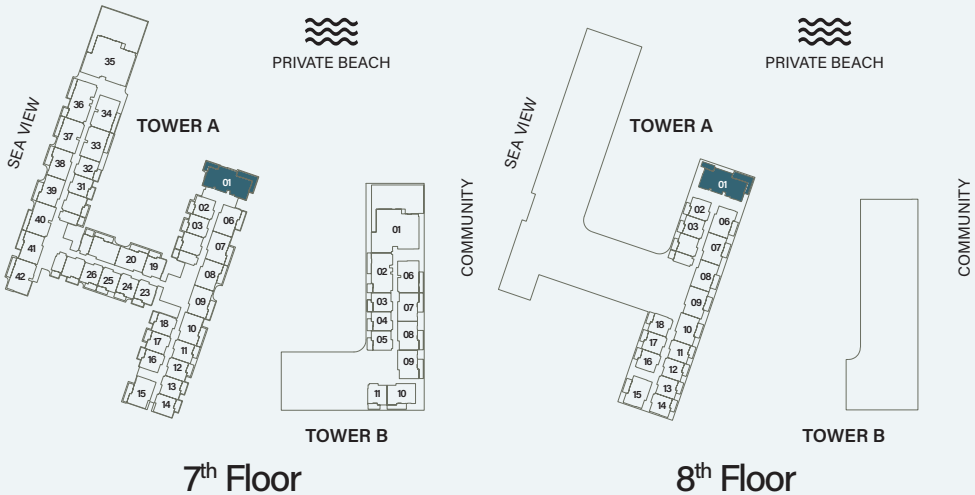
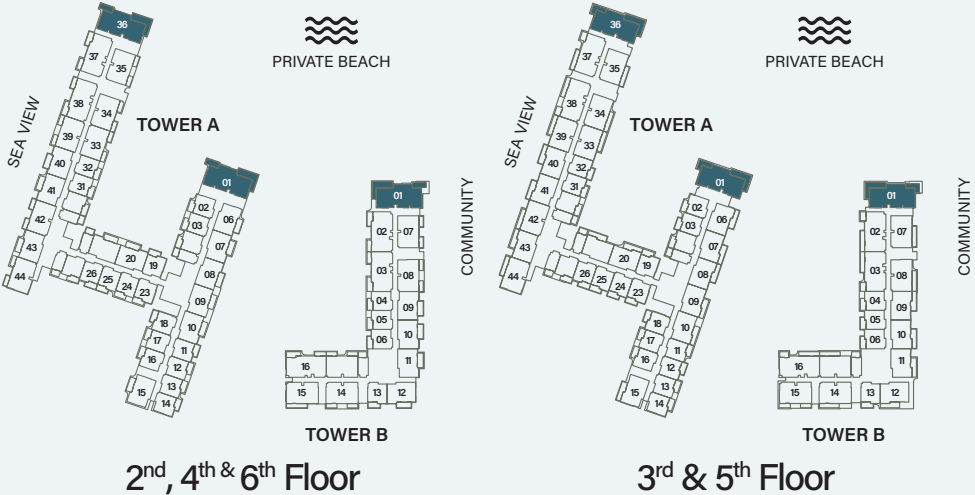
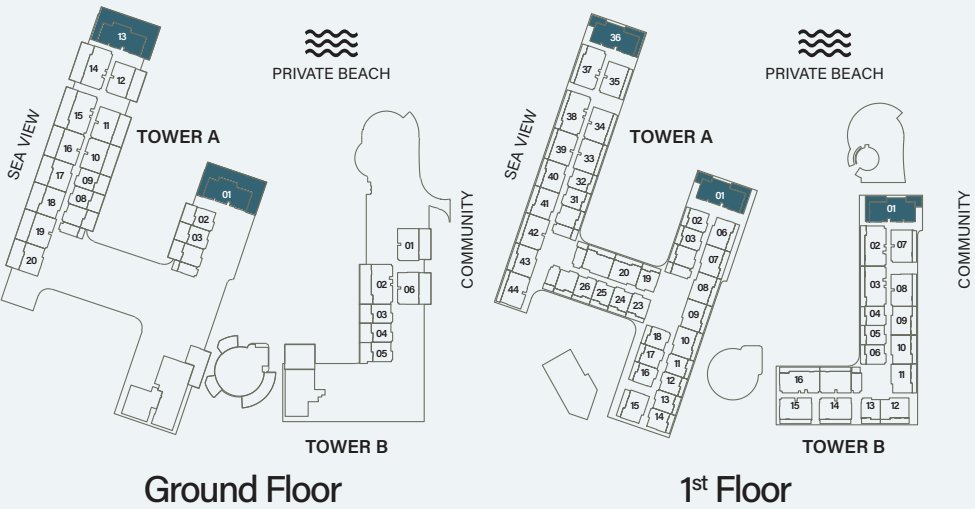
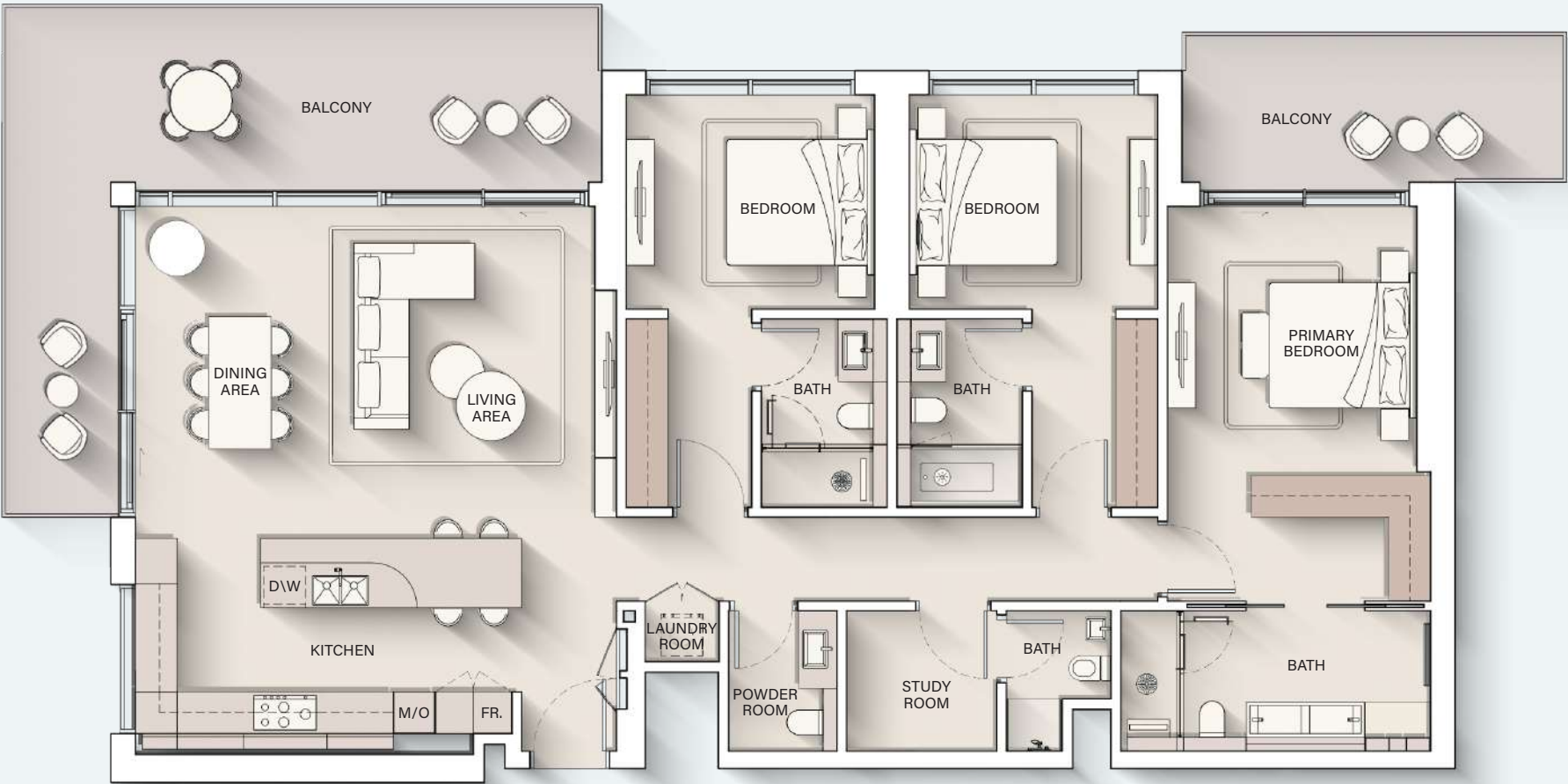
Internal Living Area : 1500.17 sq. ft

Outdoor Living Area : 230.46 sq. ft

Total Living Area : 1730.62 sq. ft



# 3 - BEDROOM DELUXE

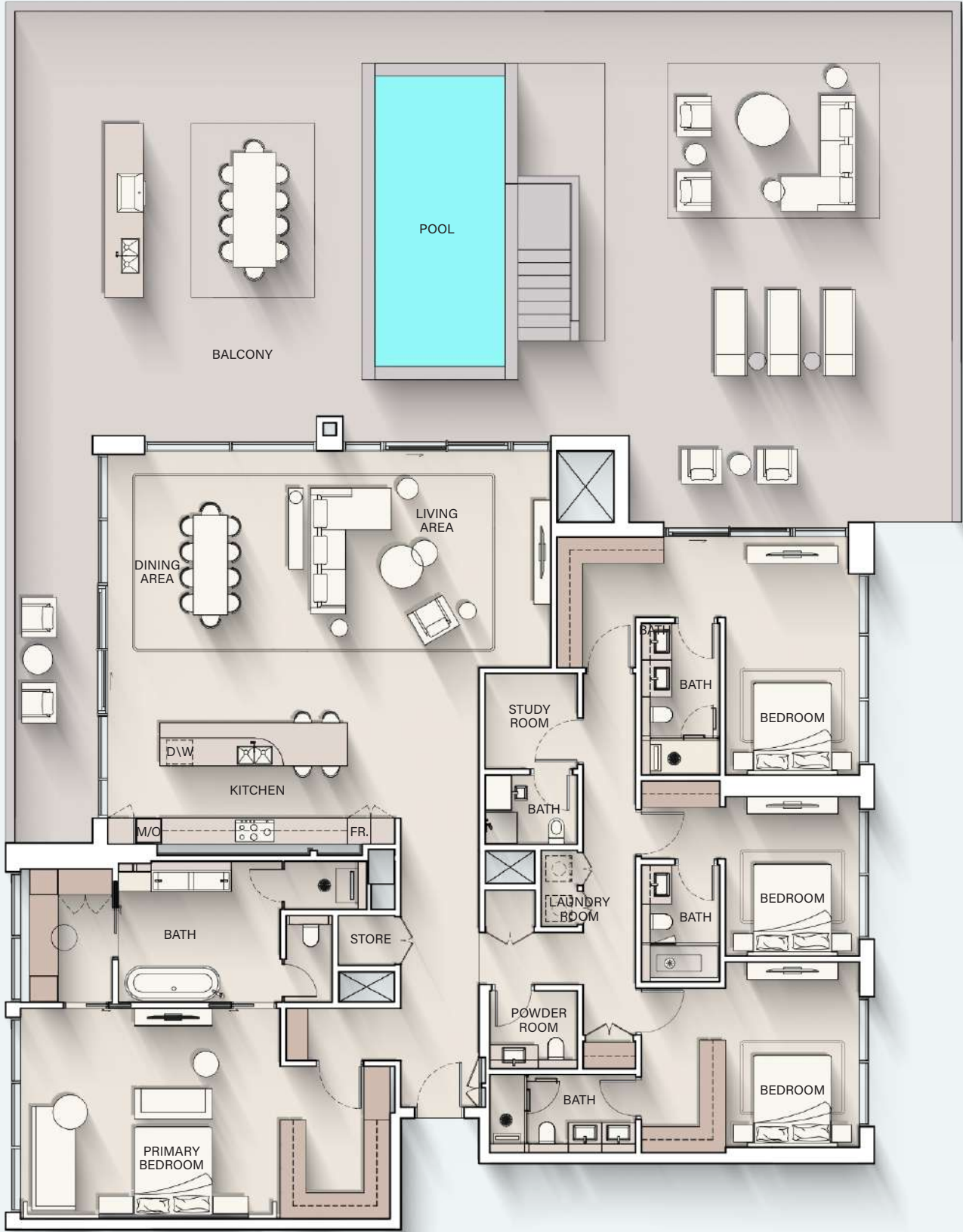


Internal Living Area : 1771.85 sq. ft      Outdoor Living Area : 477.06 sq. ft      Total Living Area : 2248.90 sq. ft





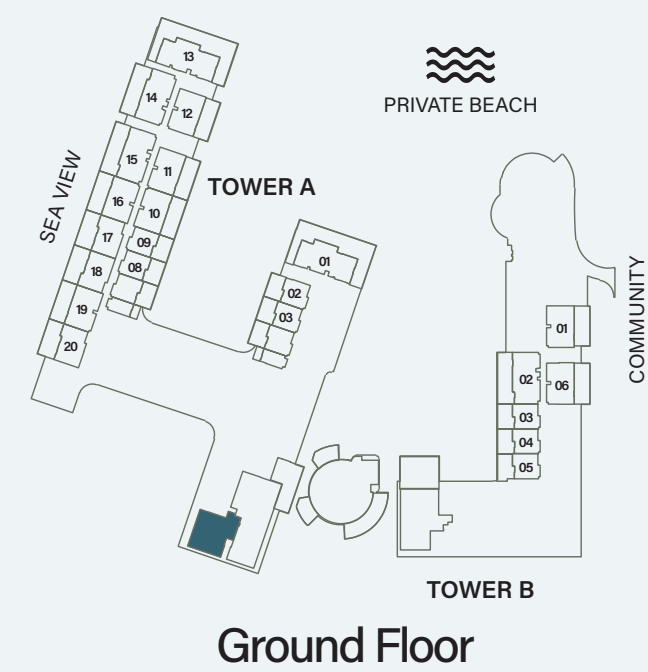
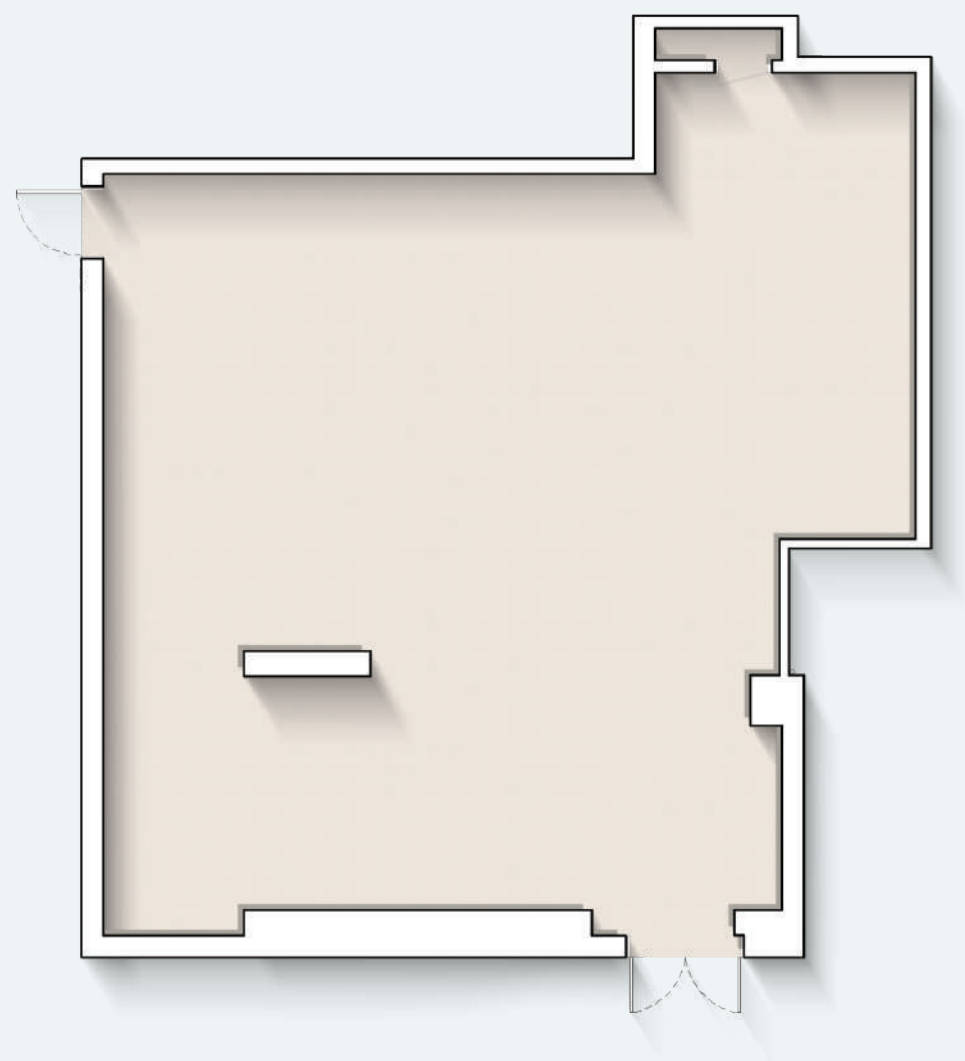
# 4 - BEDROOM PENTHOUSE



Internal Living Area : 3222.50 sq. ft    Outdoor Living Area : 2663.64 sq. ft    Total Living Area : 5886.14 sq. ft



# RETAIL - 1

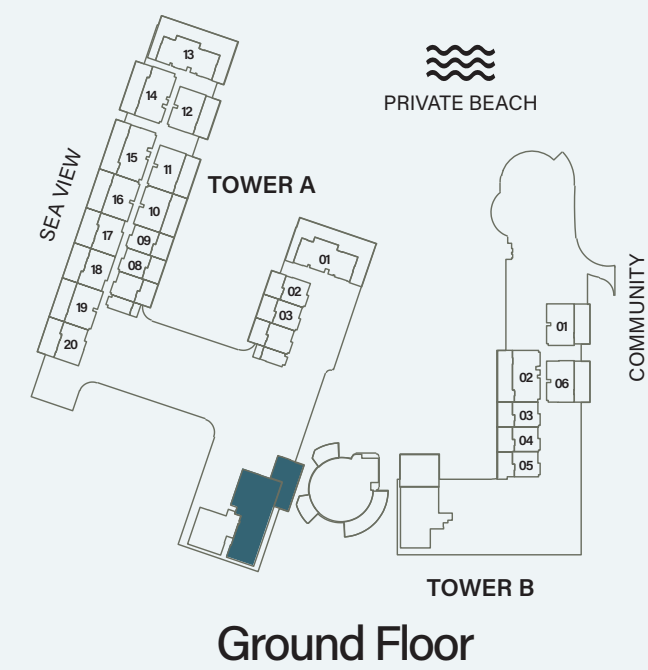
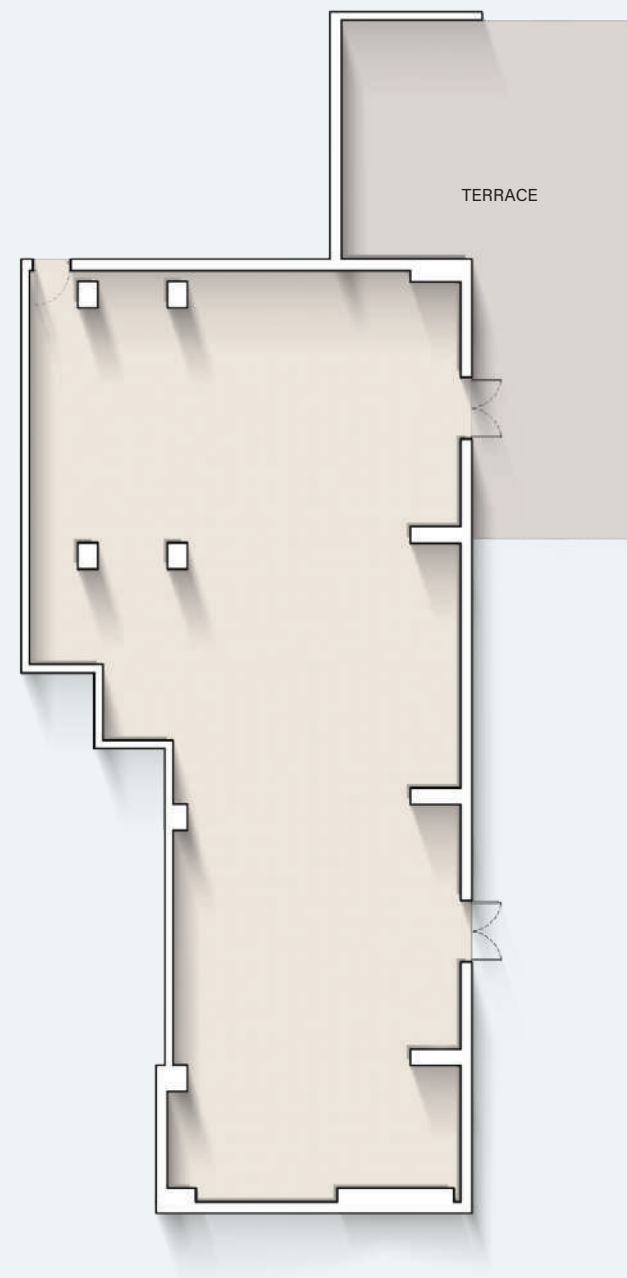


Internal Living Area : **1695.85 sq. ft**



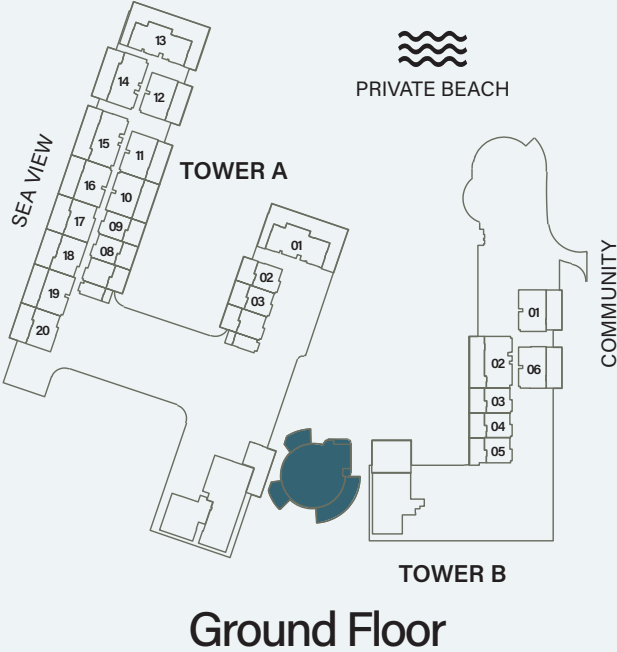
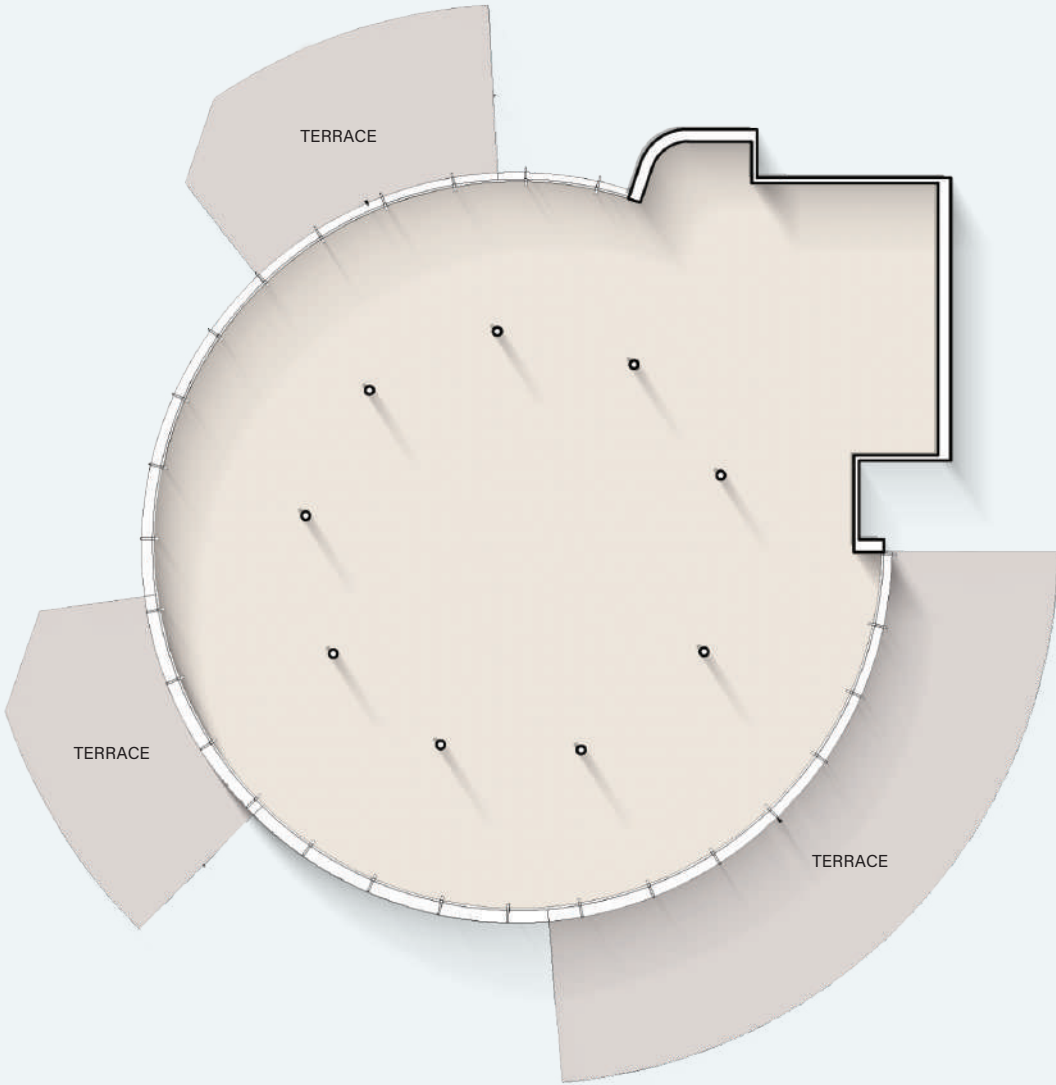


# RETAIL - 2





# RETAIL - 3





# RETAIL - 4

