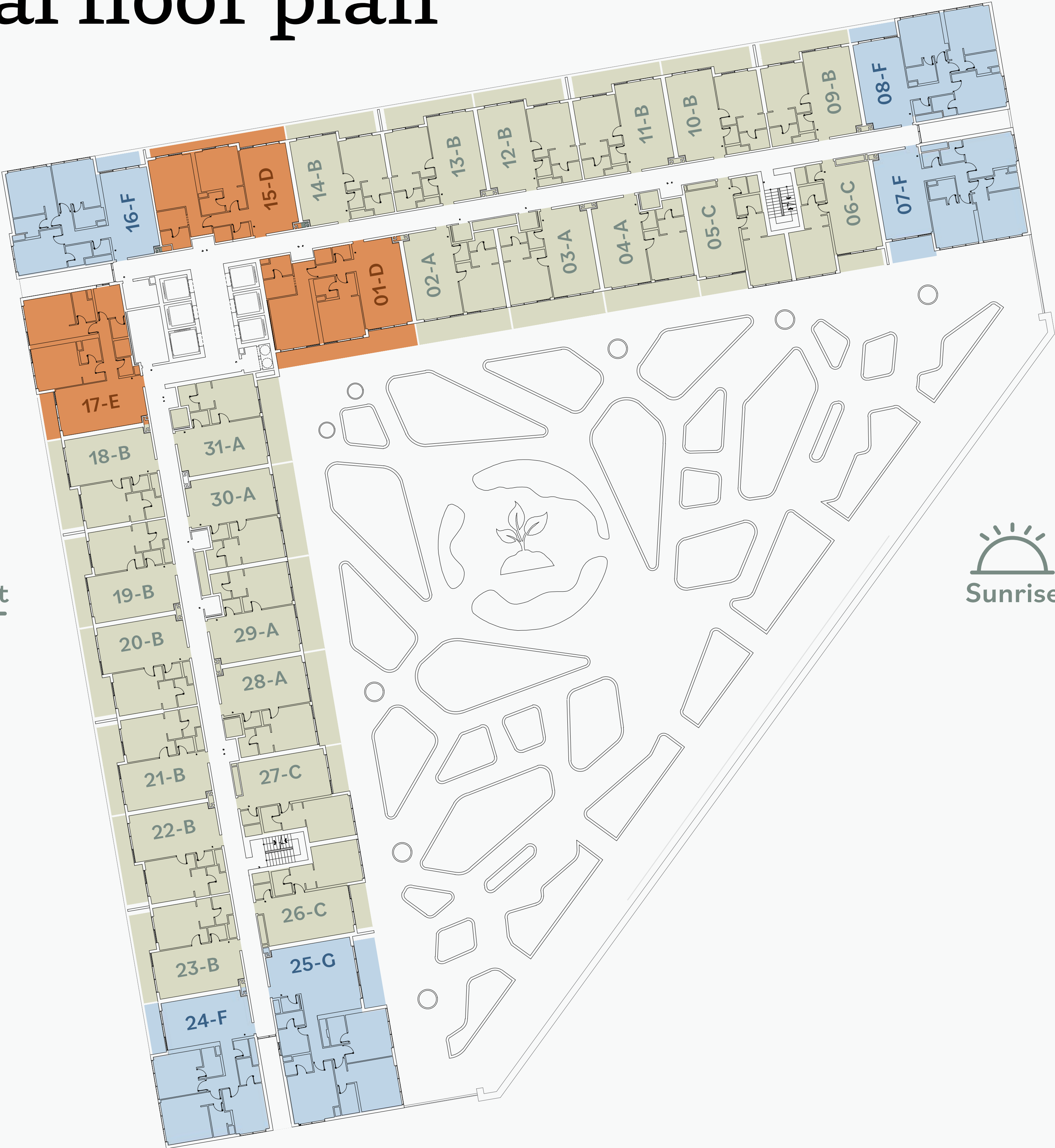
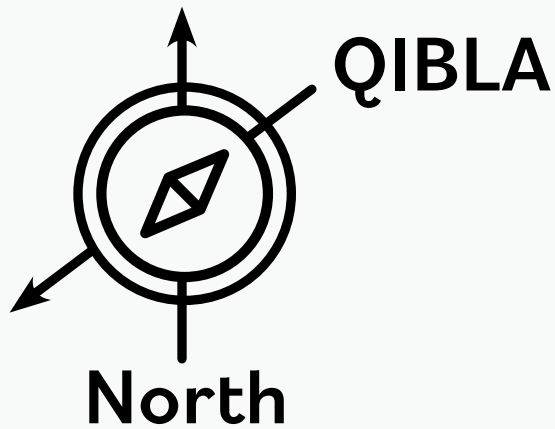


# Typical floor plan



- One Bedroom Apartment
- Two Bedrooms Apartment
- Three Bedrooms Apartment

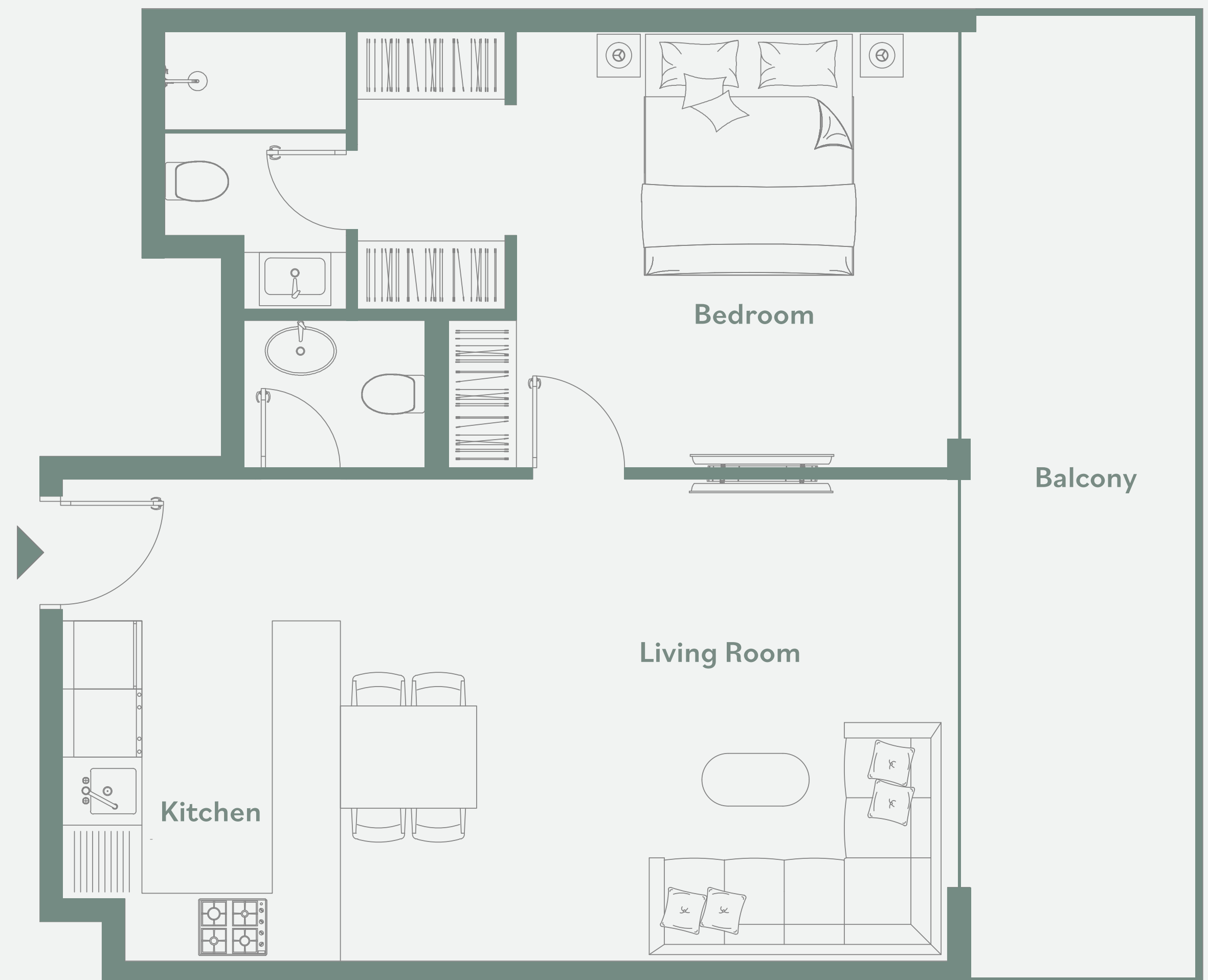
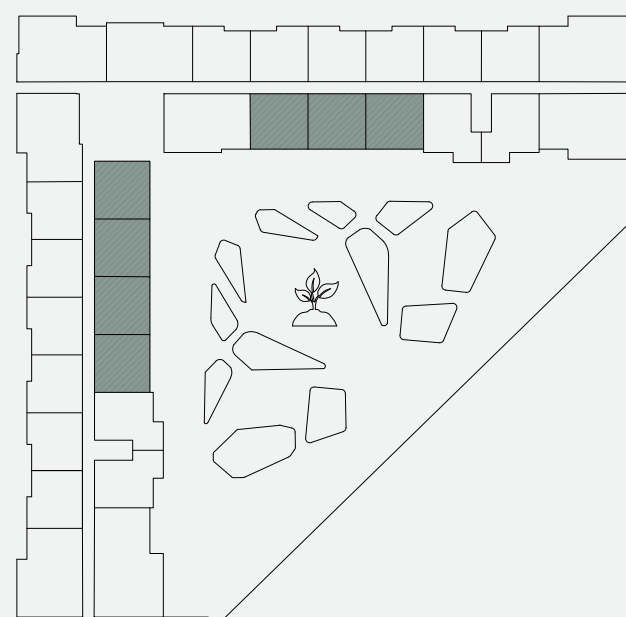
# One bedroom apartment – Type A

## General

- Approx. 3.1m clear ceiling height in principal rooms
- High performance floor to ceiling double glazing window systems
- Built in heat/smoke detectors and in-suite water sprinkler system
- Individual apartment water, electricity, cooling, gas metering
- One car parking included
- Unit Size: 861.00 - 879.52 sqft

## Finishes

- Flooring: porcelain tiles, matte finish, timber effect
- Custom designed fire resistant entry door with electronic smart lock
- Laminated modern interior doors with magnetic door hardware
- Custom designed contemporary kitchen cabinetry, in a white colour
- Quartz worktop, glass backsplash, undermount sink with mixer
- Custom designed contemporary built in wardrobes
- Built in appliances: Siemens (or equivalent) refrigerator, dishwasher, washing machine, gas oven, gas hob, extraction hood
- Bathroom sanitaryware, faucets and accessories: Grohe, Geberit, Vitra (or equivalent)



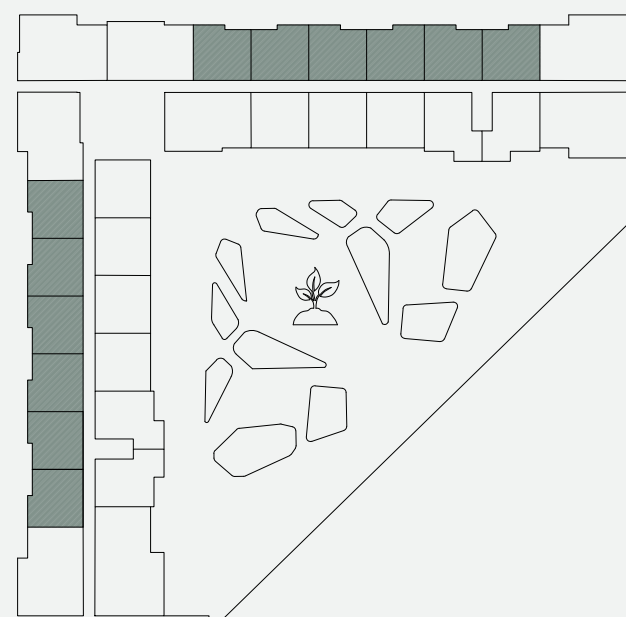
# One bedroom apartment – Type B

## General

- Approx. 3.1m clear ceiling height in principal rooms
- High performance floor to ceiling double glazing window systems
- Built in heat/smoke detectors and in-suite water sprinkler system
- Individual apartment water, electricity, cooling, gas metering
- One car parking included
- Unit Size: from 838.29 to 849.16 sqft

## Finishes

- Flooring: porcelain tiles, matte finish, timber effect
- Custom designed fire resistant entry door with electronic smart lock
- Laminated modern interior doors with magnetic door hardware
- Custom designed contemporary kitchen cabinetry, in a white colour
- Quartz worktop, glass backsplash, undermount sink with mixer
- Custom designed contemporary built in wardrobes
- Built in appliances: Siemens (or equivalent) refrigerator, dishwasher, washing machine, gas oven, gas hob, extraction hood
- Bathroom sanitaryware, faucets and accessories: Grohe, Geberit, Vitra (or equivalent)





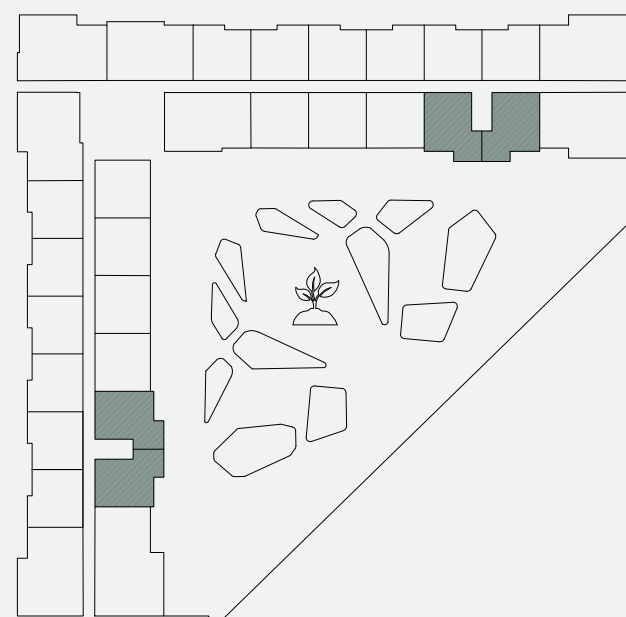
# One bedroom apartment – Type C

## General

- Approx. 3.1m clear ceiling height in principal rooms
- High performance floor to ceiling double glazing window systems
- Built in heat/smoke detectors and in-suite water sprinkler system
- Individual apartment water, electricity, cooling, gas metering
- One car parking included
- Unit Size: from 797.49 to 806.75 sqft

## Finishes

- Flooring: porcelain tiles, matte finish, timber effect
- Custom designed fire resistant entry door with electronic smart lock
- Laminated modern interior doors with magnetic door hardware
- Custom designed contemporary kitchen cabinetry, in a white colour
- Quartz worktop, glass backsplash, undermount sink with mixer
- Custom designed contemporary built in wardrobes
- Built in appliances: Siemens (or equivalent) refrigerator, dishwasher, washing machine, gas oven, gas hob, extraction hood
- Bathroom sanitaryware, faucets and accessories: Grohe, Geberit, Vitra (or equivalent)



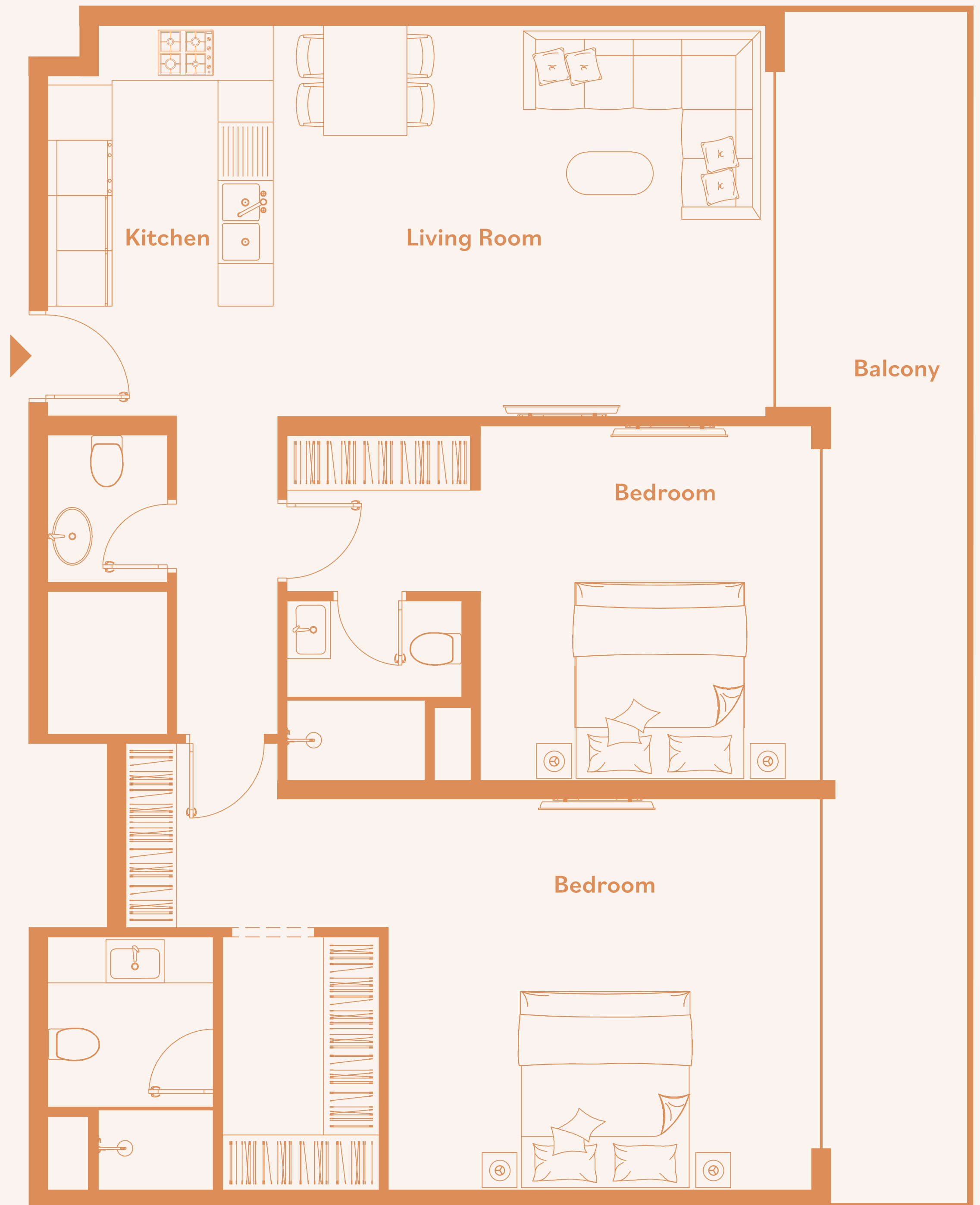
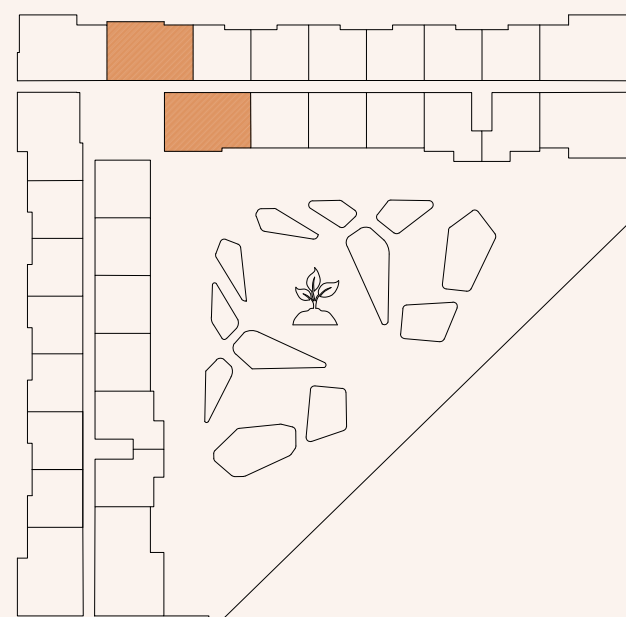
# Two bedrooms apartment – Type D

## General

- Approx. 3.1m clear ceiling height in principal rooms
- High performance floor to ceiling double glazing window systems
- Built in heat/smoke detectors and in-suite water sprinkler system
- Individual apartment water, electricity, cooling, gas metering
- Two car parking spaces included
- Unit Size: 1234.08 - 1360.34 sqft

## Finishes

- Flooring: porcelain tiles, matte finish, timber effect
- Custom designed fire resistant entry door with electronic smart lock
- Laminated modern interior doors with magnetic door hardware
- Custom designed contemporary kitchen cabinetry, in a white colour
- Quartz worktop, glass backsplash, undermount sink with mixer
- Custom designed contemporary built in wardrobes
- Built in appliances: Siemens (or equivalent) two refrigerators, dishwasher, washing machine, gas oven, gas hob, extraction hood
- Bathroom sanitaryware, faucets and accessories: Grohe, Geberit, Vitra (or equivalent)



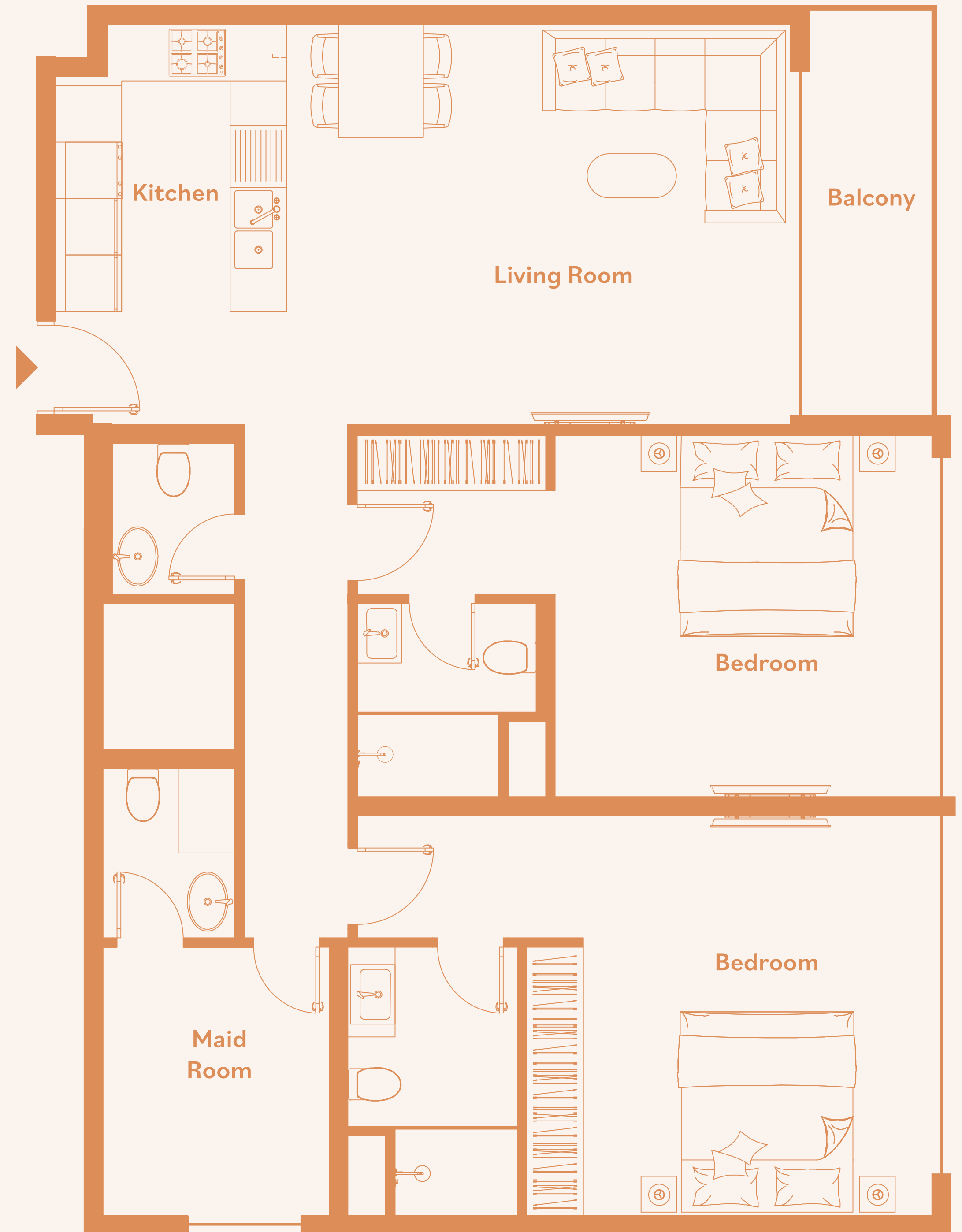
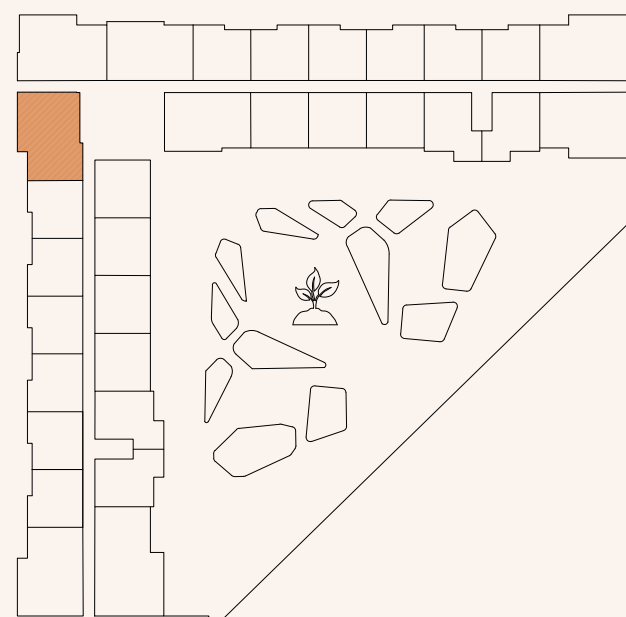
# Two bedrooms apartment – Type E

## General

- Approx. 3.1m clear ceiling height in principal rooms
- Maid Room
- High performance floor to ceiling double glazing window systems
- Built in heat/smoke detectors and in-suite water sprinkler system
- Individual apartment water, electricity, cooling, gas metering
- Two car parking spaces included
- Unit Size: 1242.69 sqft

## Finishes

- Flooring: porcelain tiles, matte finish, timber effect
- Custom designed fire resistant entry door with electronic smart lock
- Laminated modern interior doors with magnetic door hardware
- Custom designed contemporary kitchen cabinetry, in a white colour
- Quartz worktop, glass backsplash, undermount sink with mixer
- Custom designed contemporary built in wardrobes
- Built in appliances: Siemens (or equivalent) two refrigerators, dishwasher, washing machine, gas oven, gas hob, extraction hood
- Bathroom sanitaryware, faucets and accessories: Grohe, Geberit, Vitra (or equivalent)



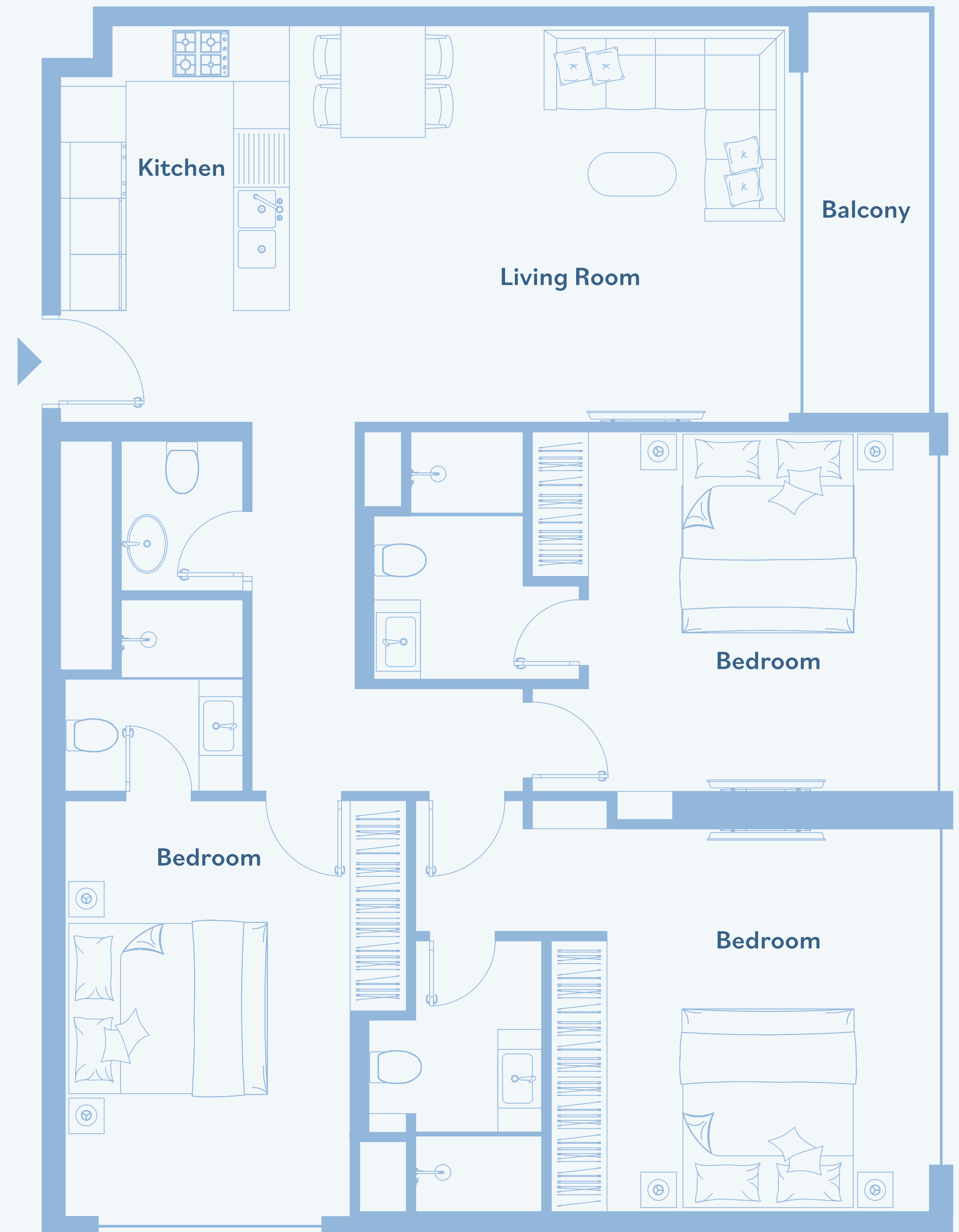
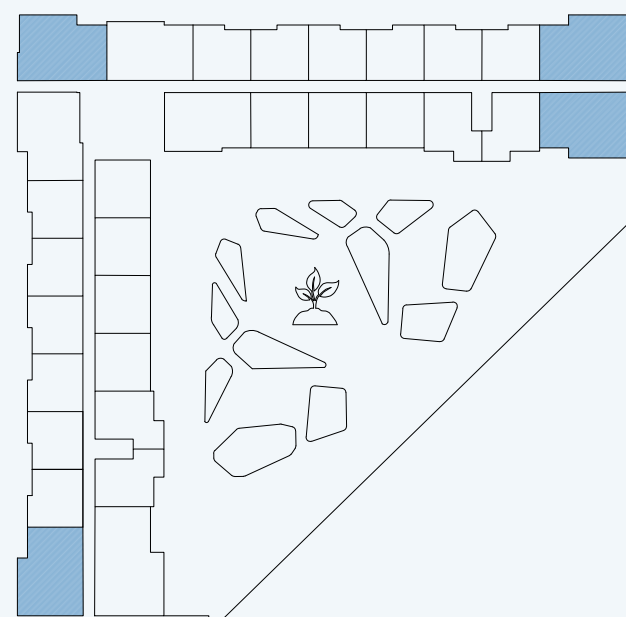
# Three bedrooms apartment – Type F

## General

- Approx. 3.1m clear ceiling height in principal rooms
- High performance floor to ceiling double glazing window systems
- Built in heat/smoke detectors and in-suite water sprinkler system
- Individual apartment water, electricity, cooling, gas metering
- Two car parkings included
- Unit Size: 1298.23 - 1344.73 sqft

## Finishes

- Flooring: porcelain tiles, matte finish, timber effect
- Custom designed fire resistant entry door with electronic smart lock
- Laminated modern interior doors with magnetic door hardware
- Custom designed contemporary kitchen cabinetry, in a white colour
- Quartz worktop, glass backsplash, undermount sink with mixer
- Custom designed contemporary built in wardrobes
- Built in appliances: Siemens (or equivalent) two refrigerators, dishwasher, washing machine, gas oven, gas hob, extraction hood
- Bathroom sanitaryware, faucets and accessories: Grohe, Geberit, Vitra (or equivalent)





# Three bedrooms apartment – Type G

## General

- Approx. 3.1m clear ceiling height in principal rooms
- Maid Room
- High performance floor to ceiling double glazing window systems
- Built in heat/smoke detectors and in-suite water sprinkler system
- Individual apartment water, electricity, cooling, gas metering
- Two car parkings included
- Unit Size: 1700.05 -1711.35 sqft

## Finishes

- Flooring: porcelain tiles, matte finish, timber effect
- Custom designed fire resistant entry door with electronic smart lock
- Laminated modern interior doors with magnetic door hardware
- Custom designed contemporary kitchen cabinetry, in a white colour
- Quartz worktop, glass backsplash, undermount sink with mixer
- Custom designed contemporary built in wardrobes
- Built in appliances: Siemens (or equivalent) two refrigerators, dishwasher, washing machine, gas oven, gas hob, extraction hood
- Bathroom sanitaryware, faucets and accessories: Grohe, Geberit, Vitra (or equivalent)

