

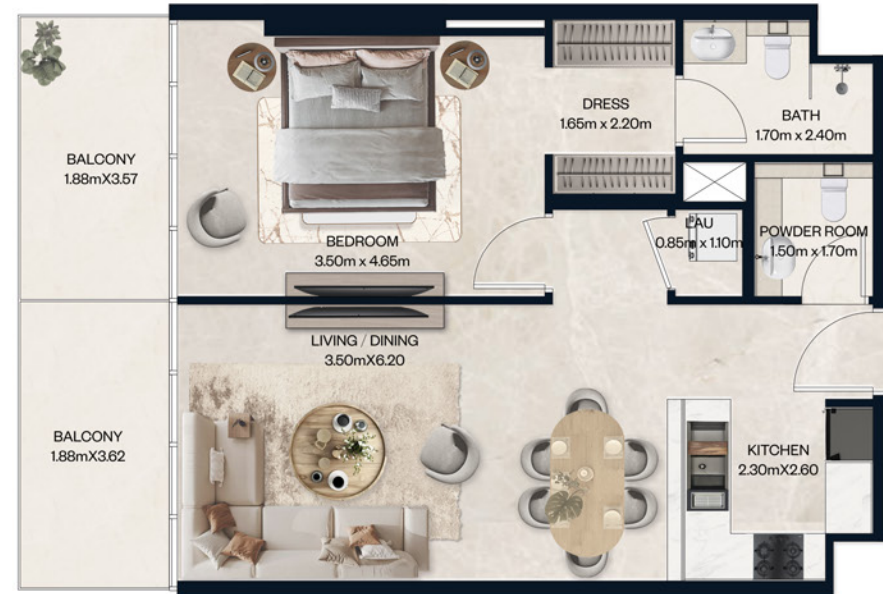
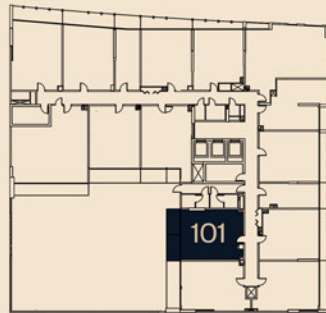
NORAH

RESIDENCE

1 BEDROOM

UNIT - 101	AREA (sq.m.)	AREA (sq.ft.)
SUITE AREA	63.70	685.66
BALCONY AREA	13.90	149.62
TOTAL AREA	77.60	834.98

KEY PLAN



FLOOR PLAN 1. All dimensions are in imperial and metric, and measured from finish to finish excluding construction tolerances. 2. All materials, dimensions, and drawings are approximate only. 3. Information is subject to change without notice, at developer's absolute discretion. 4. Actual area may vary from the stated area. 5. Drawings not to scale. 6. All images used are for illustrative purposes only and do not represent the actual size, features, specifications, fittings, and furnishings. 7. The developer reserves the right to make revisions / alterations, at it's absolute discretion, without any liability whatsoever.

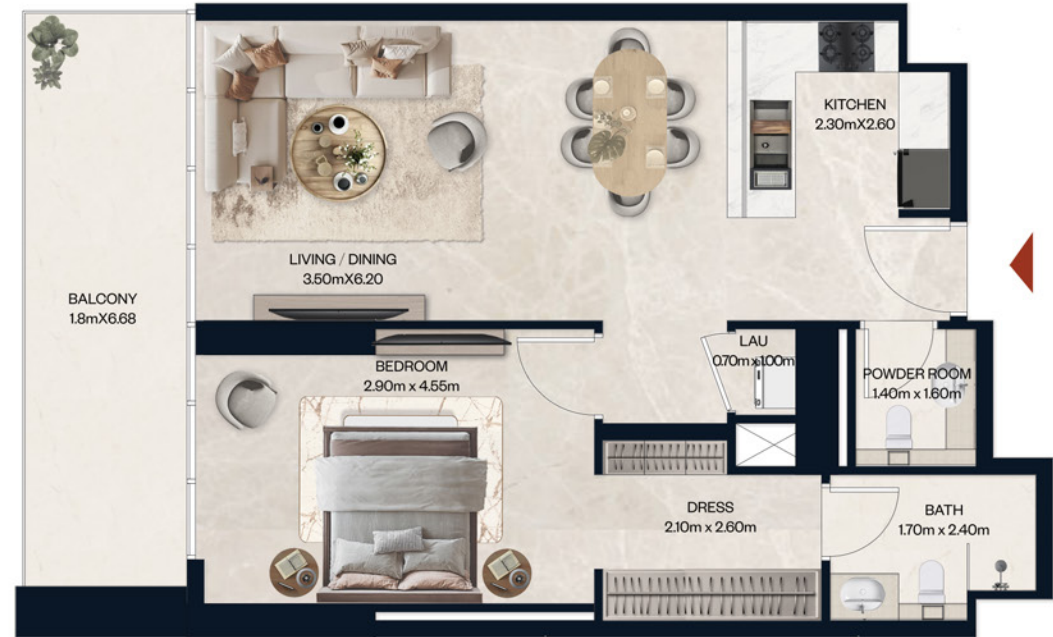
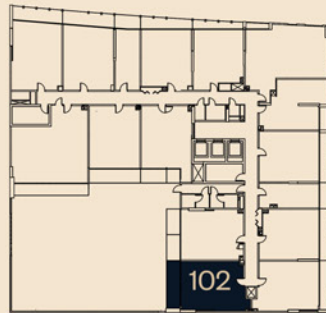
NORAH

RESIDENCE

1 BEDROOM

UNIT - 102	AREA (sq.m.)	AREA (sq.ft.)
SUITE AREA	65.06	700.30
BALCONY AREA	13.48	145.10
TOTAL AREA	78.54	845.09

KEY PLAN



FLOOR PLAN 1. All dimensions are in imperial and metric, and measured from finish to finish excluding construction tolerances. 2. All materials, dimensions, and drawings are approximate only. 3. Information is subject to change without notice, at developer's absolute discretion. 4. Actual area may vary from the stated area. 5. Drawings not to scale. 6. All images used are for illustrative purposes only and do not represent the actual size, features, specifications, fittings, and furnishings. 7. The developer reserves the right to make revisions / alterations, at it's absolute discretion, without any liability whatsoever.

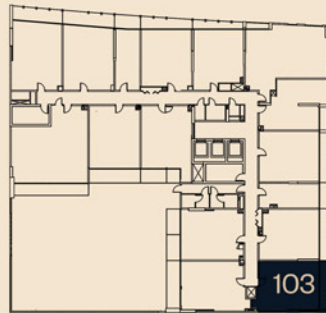
NORAH

RESIDENCE

1 BEDROOM

UNIT - 103	AREA (sq.m.)	AREA (sq.ft.)
SUITE AREA	62.54	673.17
BALCONY AREA	9.36	100.75
TOTAL AREA	71.90	773.64

KEY PLAN



FLOOR PLAN 1. All dimensions are in imperial and metric, and measured from finish to finish excluding construction tolerances. 2. All materials, dimensions, and drawings are approximate only. 3. Information is subject to change without notice, at developer's absolute discretion. 4. Actual area may vary from the stated area. 5. Drawings not to scale. 6. All images used are for illustrative purposes only and do not represent the actual size, features, specifications, fittings, and furnishings. 7. The developer reserves the right to make revisions / alterations, at it's absolute discretion, without any liability whatsoever.

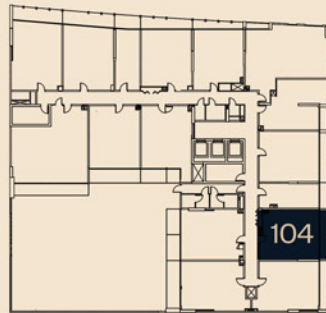
NORAH

RESIDENCE

1 BEDROOM

UNIT - 104	AREA (sq.m.)	AREA (sq.ft.)
SUITE AREA	59.49	640.35
BALCONY AREA	9.55	102.80
TOTAL AREA	69.04	742.87

KEY PLAN



FLOOR PLAN 1. All dimensions are in imperial and metric, and measured from finish to finish excluding construction tolerances. 2. All materials, dimensions, and drawings are approximate only. 3. Information is subject to change without notice, at developer's absolute discretion. 4. Actual area may vary from the stated area. 5. Drawings not to scale. 6. All images used are for illustrative purposes only and do not represent the actual size, features, specifications, fittings, and furnishings. 7. The developer reserves the right to make revisions / alterations, at it's absolute discretion, without any liability whatsoever.

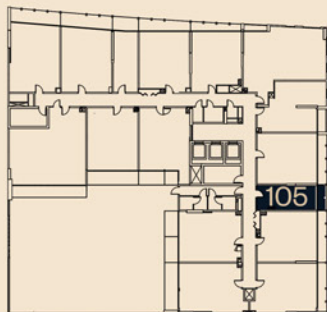
NORAH

RESIDENCE

STUDIO

UNIT - 105	AREA (sq.m.)	AREA (sq.ft.)
SUITE AREA	30.81	331.64
BALCOONY AREA	4.78	51.45
TOTAL AREA	35.59	382.95

KEY PLAN



FLOOR PLAN 1. All dimensions are in imperial and metric, and measured from finish to finish excluding construction tolerances. 2. All materials, dimensions, and drawings are approximate only. 3. Information is subject to change without notice, at developer's absolute discretion. 4. Actual area may vary from the stated area. 5. Drawings not to scale. 6. All images used are for illustrative purposes only and do not represent the actual size, features, specifications, fittings, and furnishings. 7. The developer reserves the right to make revisions / alterations, at it's absolute discretion, without any liability whatsoever.

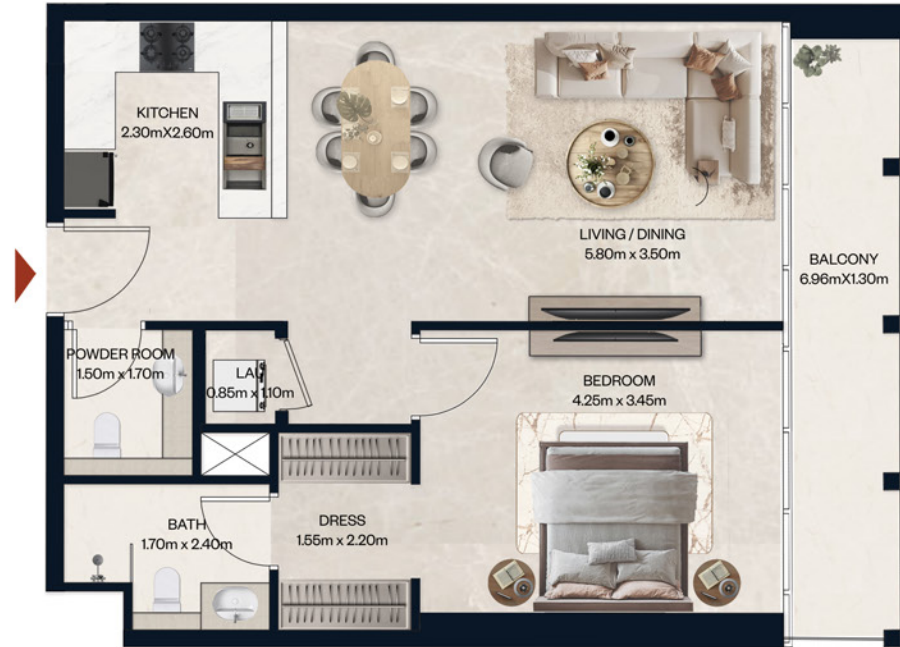
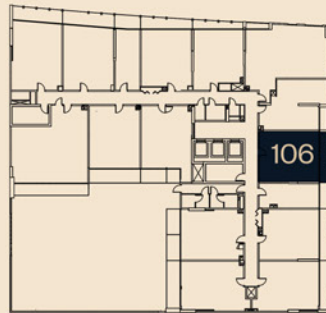
NORAH

RESIDENCE

1 BEDROOM

UNIT - 106	AREA (sq.m.)	AREA (sq.ft.)
SUITE AREA	61.59	662.95
BALCOONY AREA	9.42	101.40
TOTAL AREA	71.01	764.07

KEY PLAN



FLOOR PLAN 1. All dimensions are in imperial and metric, and measured from finish to finish excluding construction tolerances. 2. All materials, dimensions, and drawings are approximate only. 3. Information is subject to change without notice, at developer's absolute discretion. 4. Actual area may vary from the stated area. 5. Drawings not to scale. 6. All images used are for illustrative purposes only and do not represent the actual size, features, specifications, fittings, and furnishings. 7. The developer reserves the right to make revisions / alterations, at it's absolute discretion, without any liability whatsoever.

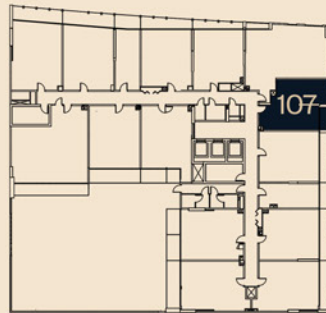
NORAH

RESIDENCE

1 BEDROOM

UNIT - 107	AREA (sq.m.)	AREA (sq.ft.)
SUITE AREA	58.24	626.89
BALCONY AREA	4.37	47.04
TOTAL AREA	62.61	673.68

KEY PLAN



FLOOR PLAN 1. All dimensions are in imperial and metric, and measured from finish to finish excluding construction tolerances. 2. All materials, dimensions, and drawings are approximate only. 3. Information is subject to change without notice, at developer's absolute discretion. 4. Actual area may vary from the stated area. 5. Drawings not to scale. 6. All images used are for illustrative purposes only and do not represent the actual size, features, specifications, fittings, and furnishings. 7. The developer reserves the right to make revisions / alterations, at it's absolute discretion, without any liability whatsoever.

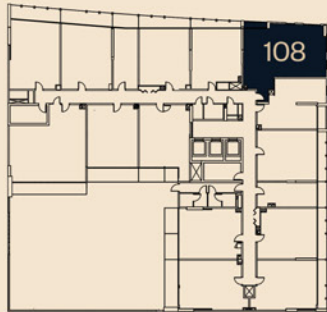
NORAH

RESIDENCE

2 BEDROOM

UNIT - 108	AREA (sq.m.)	AREA (sq.ft.)
SUITE AREA	96.82	1042.16
BALCONY AREA	3.14	33.80
TOTAL AREA	99.96	1075.57

KEY PLAN



FLOOR PLAN 1. All dimensions are in imperial and metric, and measured from finish to finish excluding construction tolerances. 2. All materials, dimensions, and drawings are approximate only. 3. Information is subject to change without notice, at developer's absolute discretion. 4. Actual area may vary from the stated area. 5. Drawings not to scale. 6. All images used are for illustrative purposes only and do not represent the actual size, features, specifications, fittings, and furnishings. 7. The developer reserves the right to make revisions / alterations, at it's absolute discretion, without any liability whatsoever.

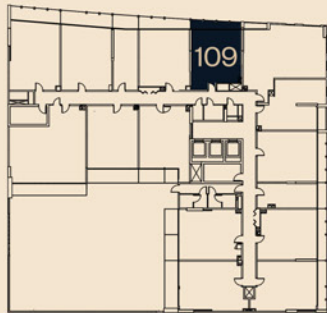
NORAH

RESIDENCE

1 BEDROOM

UNIT - 109	AREA (sq.m.)	AREA (sq.ft.)
SUITE AREA	58.56	630.33
BALCONY AREA	8.25	88.80
TOTAL AREA	66.81	718.88

KEY PLAN



FLOOR PLAN 1. All dimensions are in imperial and metric, and measured from finish to finish excluding construction tolerances. 2. All materials, dimensions, and drawings are approximate only. 3. Information is subject to change without notice, at developer's absolute discretion. 4. Actual area may vary from the stated area. 5. Drawings not to scale. 6. All images used are for illustrative purposes only and do not represent the actual size, features, specifications, fittings, and furnishings. 7. The developer reserves the right to make revisions / alterations, at it's absolute discretion, without any liability whatsoever.

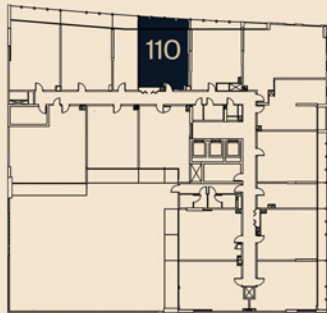
NORAH

RESIDENCE

1 BEDROOM

UNIT - 110	AREA (sq.m.)	AREA (sq.ft.)
SUITE AREA	59.95	645.30
BALCONY AREA	11.44	123.14
TOTAL AREA	71.39	768.16

KEY PLAN



FLOOR PLAN 1. All dimensions are in imperial and metric, and measured from finish to finish excluding construction tolerances. 2. All materials, dimensions, and drawings are approximate only. 3. Information is subject to change without notice, at developer's absolute discretion. 4. Actual area may vary from the stated area. 5. Drawings not to scale. 6. All images used are for illustrative purposes only and do not represent the actual size, features, specifications, fittings, and furnishings. 7. The developer reserves the right to make revisions / alterations, at it's absolute discretion, without any liability whatsoever.

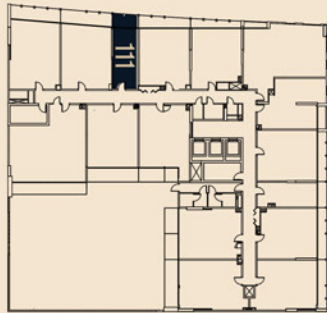
NORAH

RESIDENCE

STUDIO

UNIT - 111	AREA (sq.m.)	AREA (sq.ft.)
SUITE AREA	31.30	336.91
BALCONY AREA	6.95	74.81
TOTAL AREA	38.25	411.57

KEY PLAN



FLOOR PLAN 1. All dimensions are in imperial and metric, and measured from finish to finish excluding construction tolerances. 2. All materials, dimensions, and drawings are approximate only. 3. Information is subject to change without notice, at developer's absolute discretion. 4. Actual area may vary from the stated area. 5. Drawings not to scale. 6. All images used are for illustrative purposes only and do not represent the actual size, features, specifications, fittings, and furnishings. 7. The developer reserves the right to make revisions / alterations, at it's absolute discretion, without any liability whatsoever.

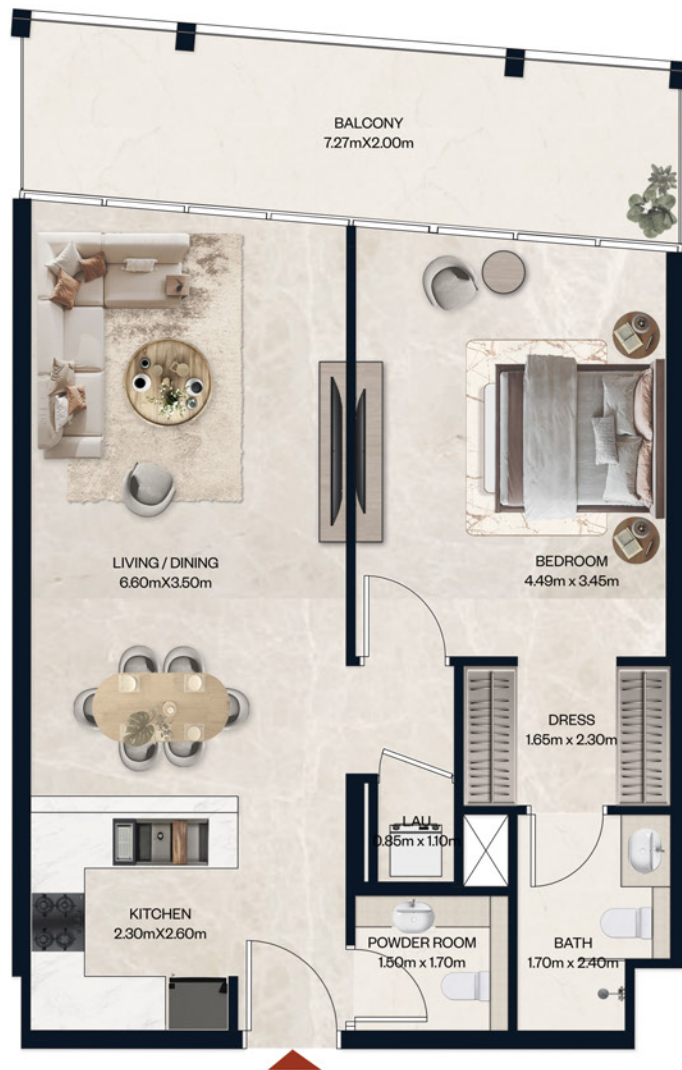
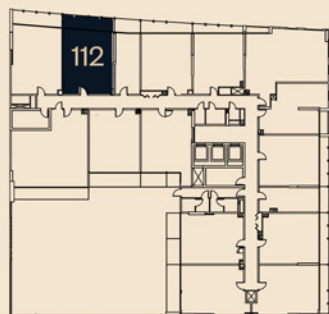
NORAH

RESIDENCE

1 BEDROOM

UNIT - 112	AREA (sq.m.)	AREA (sq.ft.)
SUITE AREA	65.49	704.93
BALCOONY AREA	14.03	151.02
TOTAL AREA	79.52	855.64

KEY PLAN



FLOOR PLAN 1. All dimensions are in imperial and metric, and measured from finish to finish excluding construction tolerances. 2. All materials, dimensions, and drawings are approximate only. 3. Information is subject to change without notice, at developer's absolute discretion. 4. Actual area may vary from the stated area. 5. Drawings not to scale. 6. All images used are for illustrative purposes only and do not represent the actual size, features, specifications, fittings, and furnishings. 7. The developer reserves the right to make revisions / alterations, at it's absolute discretion, without any liability whatsoever.

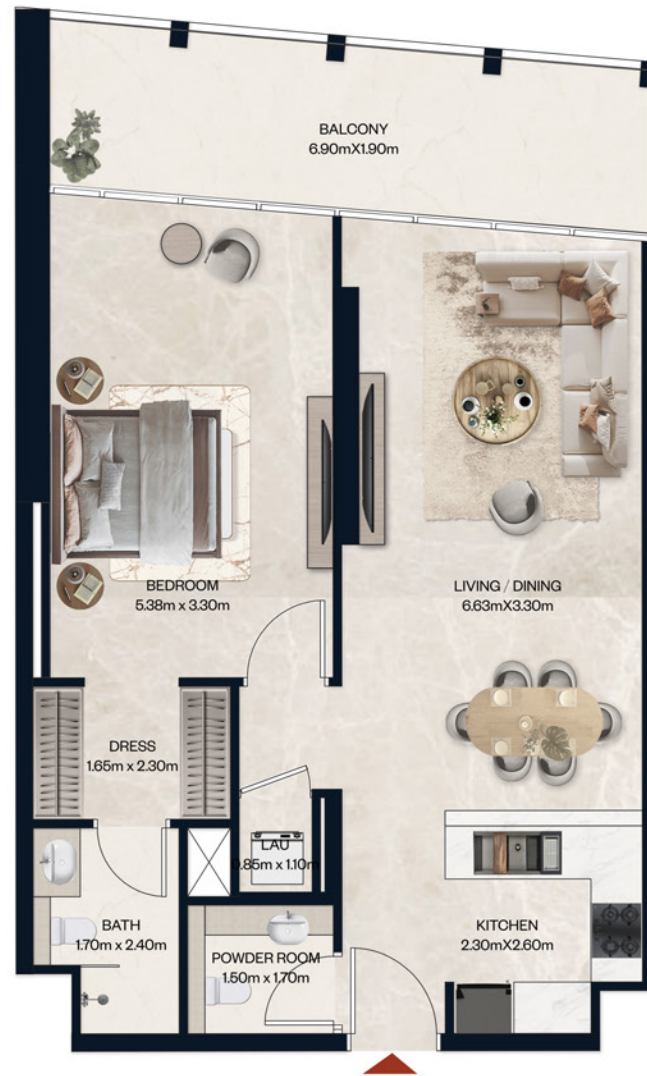
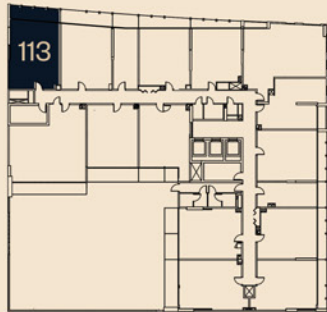
NORAH

RESIDENCE

1 BEDROOM

UNIT - 113	AREA (sq.m.)	AREA (sq.ft.)
SUITE AREA	68.74	739.91
BALOONY AREA	13.89	149.51
TOTAL AREA	82.63	889.10

KEY PLAN



FLOOR PLAN 1. All dimensions are in imperial and metric, and measured from finish to finish excluding construction tolerances. 2. All materials, dimensions, and drawings are approximate only. 3. Information is subject to change without notice, at developer's absolute discretion. 4. Actual area may vary from the stated area. 5. Drawings not to scale. 6. All images used are for illustrative purposes only and do not represent the actual size, features, specifications, fittings, and furnishings. 7. The developer reserves the right to make revisions / alterations, at it's absolute discretion, without any liability whatsoever.

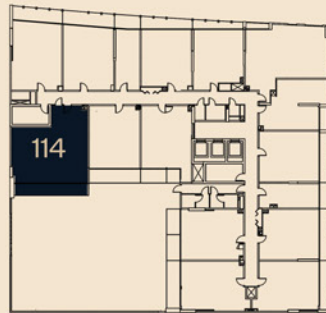
NORAH

RESIDENCE

2 BEDROOM

UNIT - 114	AREA (sq.m.)	AREA (sq.ft.)
SUITE AREA	98.41	1059.28
BALCOONY AREA	17.90	192.67
TOTAL AREA	116.31	1251.50

KEY PLAN

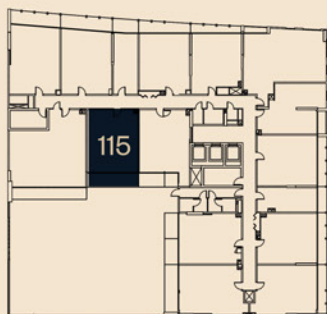


FLOOR PLAN 1. All dimensions are in imperial and metric, and measured from finish to finish excluding construction tolerances. 2. All materials, dimensions, and drawings are approximate only. 3. Information is subject to change without notice, at developer's absolute discretion. 4. Actual area may vary from the stated area. 5. Drawings not to scale. 6. All images used are for illustrative purposes only and do not represent the actual size, features, specifications, fittings, and furnishings. 7. The developer reserves the right to make revisions / alterations, at it's absolute discretion, without any liability whatsoever.

1 BEDROOM

UNIT - 115	AREA (sq.m.)	AREA (sq.ft.)
SUITE AREA	64.12	690.18
BALCONY AREA	14.34	154.35
TOTAL AREA	78.46	844.23

KEY PLAN



FLOOR PLAN 1. All dimensions are in imperial and metric, and measured from finish to finish excluding construction tolerances. 2. All materials, dimensions, and drawings are approximate only. 3. Information is subject to change without notice, at developer's absolute discretion. 4. Actual area may vary from the stated area. 5. Drawings not to scale. 6. All images used are for illustrative purposes only and do not represent the actual size, features, specifications, fittings, and furnishings. 7. The developer reserves the right to make revisions / alterations, at it's absolute discretion, without any liability whatsoever.

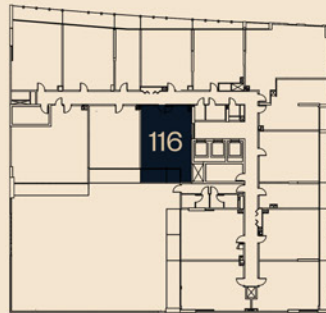
NORAH

RESIDENCE

1 BEDROOM

UNIT - 116	AREA (sq.m.)	AREA (sq.ft.)
SUITE AREA	68.29	735.07
BALCONY AREA	10.94	117.76
TOTAL AREA	79.23	852.51

KEY PLAN



FLOOR PLAN 1. All dimensions are in imperial and metric, and measured from finish to finish excluding construction tolerances. 2. All materials, dimensions, and drawings are approximate only. 3. Information is subject to change without notice, at developer's absolute discretion. 4. Actual area may vary from the stated area. 5. Drawings not to scale. 6. All images used are for illustrative purposes only and do not represent the actual size, features, specifications, fittings, and furnishings. 7. The developer reserves the right to make revisions / alterations, at it's absolute discretion, without any liability whatsoever.

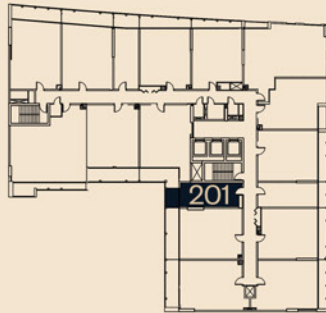
NORAH

RESIDENCE

STUDIO

UNIT - 201	AREA (sq.m.)	AREA (sq.ft.)
SUITE AREA	32.64	351.33
BALCONY AREA	5.25	56.51
TOTAL AREA	37.89	407.70

KEY PLAN



FLOOR PLAN 1. All dimensions are in imperial and metric, and measured from finish to finish excluding construction tolerances. 2. All materials, dimensions, and drawings are approximate only. 3. Information is subject to change without notice, at developer's absolute discretion. 4. Actual area may vary from the stated area. 5. Drawings not to scale. 6. All images used are for illustrative purposes only and do not represent the actual size, features, specifications, fittings, and furnishings. 7. The developer reserves the right to make revisions / alterations, at it's absolute discretion, without any liability whatsoever.

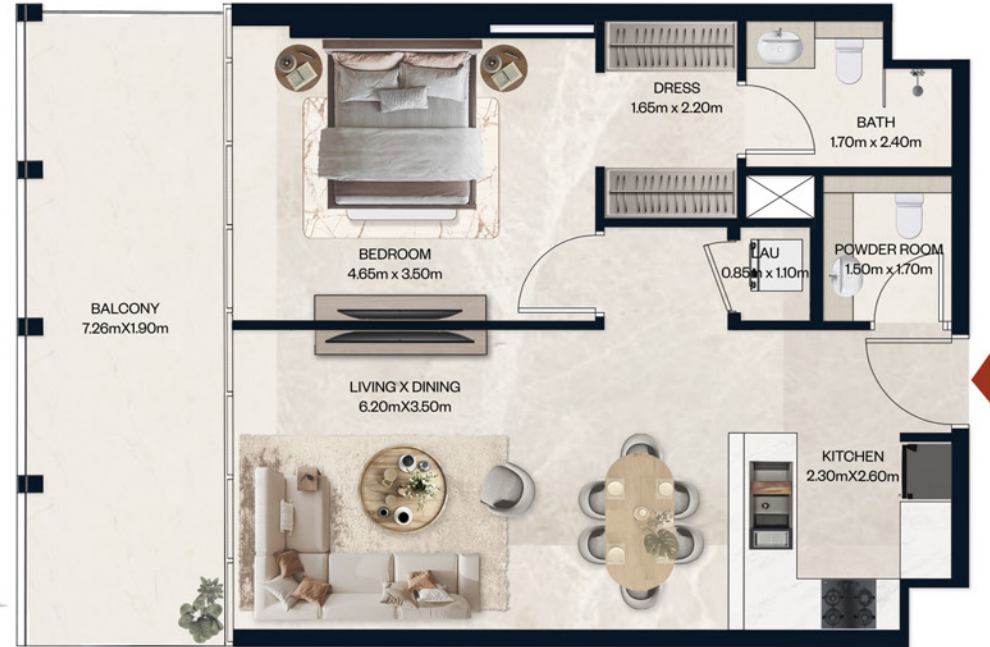
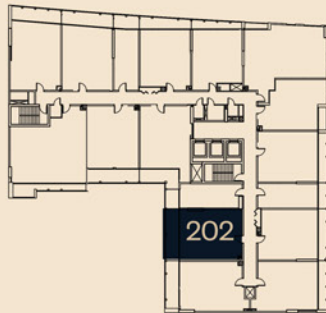
NORAH

RESIDENCE

1 BEDROOM

UNIT - 202	AREA (sq.m.)	AREA (sq.ft.)
SUITE AREA	63.70	685.66
BALCONY AREA	13.96	13.96
TOTAL AREA	77.66	835.62

KEY PLAN



FLOOR PLAN 1. All dimensions are in imperial and metric, and measured from finish to finish excluding construction tolerances. 2. All materials, dimensions, and drawings are approximate only. 3. Information is subject to change without notice, at developer's absolute discretion. 4. Actual area may vary from the stated area. 5. Drawings not to scale. 6. All images used are for illustrative purposes only and do not represent the actual size, features, specifications, fittings, and furnishings. 7. The developer reserves the right to make revisions / alterations, at it's absolute discretion, without any liability whatsoever.

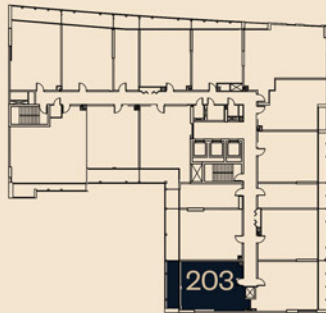
NORAH

RESIDENCE

1 BEDROOM

UNIT - 203	AREA (sq.m.)	AREA (sq.ft.)
SUITE AREA	65.06	700.30
BALCONY AREA	13.48	145.10
TOTAL AREA	78.54	845.09

KEY PLAN



FLOOR PLAN 1. All dimensions are in imperial and metric, and measured from finish to finish excluding construction tolerances. 2. All materials, dimensions, and drawings are approximate only. 3. Information is subject to change without notice, at developer's absolute discretion. 4. Actual area may vary from the stated area. 5. Drawings not to scale. 6. All images used are for illustrative purposes only and do not represent the actual size, features, specifications, fittings, and furnishings. 7. The developer reserves the right to make revisions / alterations, at it's absolute discretion, without any liability whatsoever.

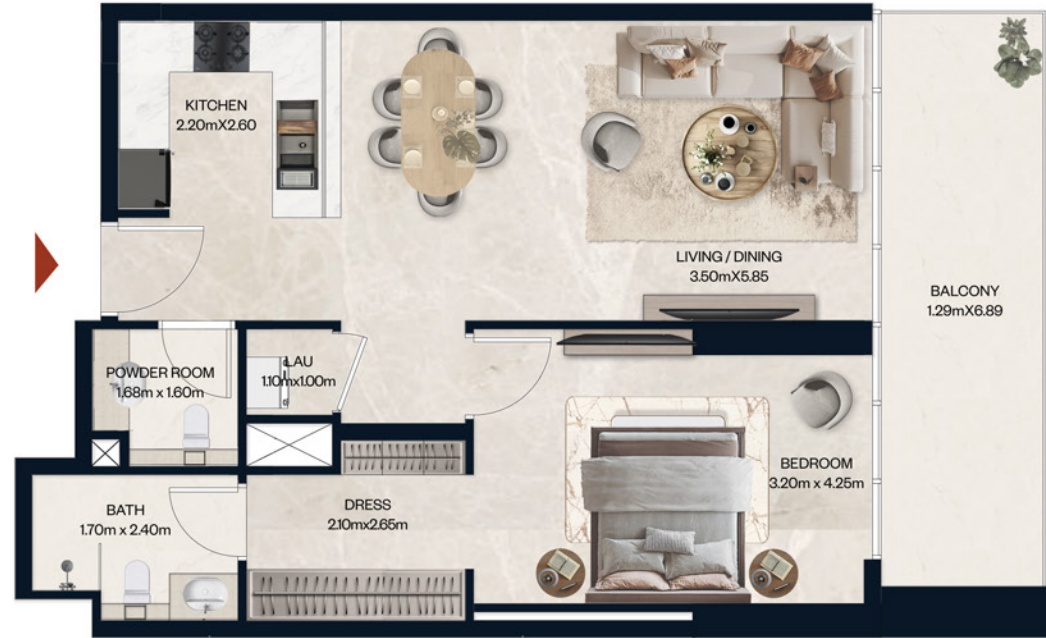
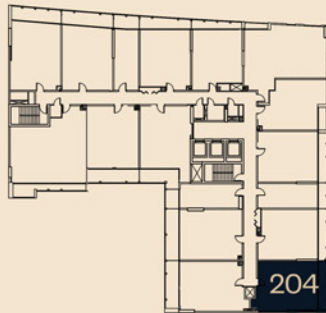
NORAH

RESIDENCE

1 BEDROOM

UNIT - 204	AREA (sq.m.)	AREA (sq.ft.)
SUITE AREA	62.61	673.93
BALCONY AREA	9.29	100.00
TOTAL AREA	71.90	773.64

KEY PLAN



FLOOR PLAN 1. All dimensions are in imperial and metric, and measured from finish to finish excluding construction tolerances. 2. All materials, dimensions, and drawings are approximate only. 3. Information is subject to change without notice, at developer's absolute discretion. 4. Actual area may vary from the stated area. 5. Drawings not to scale. 6. All images used are for illustrative purposes only and do not represent the actual size, features, specifications, fittings, and furnishings. 7. The developer reserves the right to make revisions / alterations, at it's absolute discretion, without any liability whatsoever.

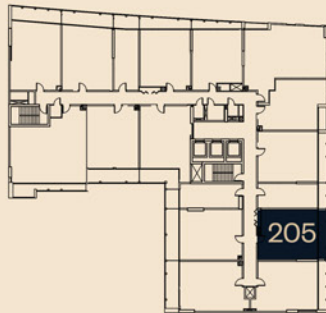
NORAH

RESIDENCE

1 BEDROOM

UNIT - 205	AREA (sq.m.)	AREA (sq.ft.)
SUITE AREA	59.49	640.35
BALCONY AREA	9.55	102.80
TOTAL AREA	69.04	742.87

KEY PLAN



FLOOR PLAN 1. All dimensions are in imperial and metric, and measured from finish to finish excluding construction tolerances. 2. All materials, dimensions, and drawings are approximate only. 3. Information is subject to change without notice, at developer's absolute discretion. 4. Actual area may vary from the stated area. 5. Drawings not to scale. 6. All images used are for illustrative purposes only and do not represent the actual size, features, specifications, fittings, and furnishings. 7. The developer reserves the right to make revisions / alterations, at it's absolute discretion, without any liability whatsoever.

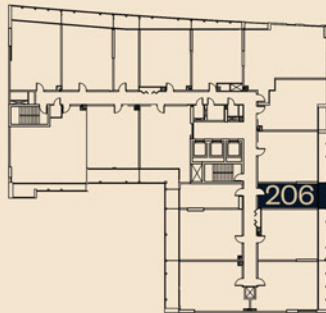
NORAH

RESIDENCE

STUDIO

UNIT - 206	AREA (sq.m.)	AREA (sq.ft.)
SUITE AREA	30.82	331.74
BALCONY AREA	4.77	51.34
TOTAL AREA	35.59	382.95

KEY PLAN



FLOOR PLAN 1. All dimensions are in imperial and metric, and measured from finish to finish excluding construction tolerances. 2. All materials, dimensions, and drawings are approximate only. 3. Information is subject to change without notice, at developer's absolute discretion. 4. Actual area may vary from the stated area. 5. Drawings not to scale. 6. All images used are for illustrative purposes only and do not represent the actual size, features, specifications, fittings, and furnishings. 7. The developer reserves the right to make revisions / alterations, at it's absolute discretion, without any liability whatsoever.

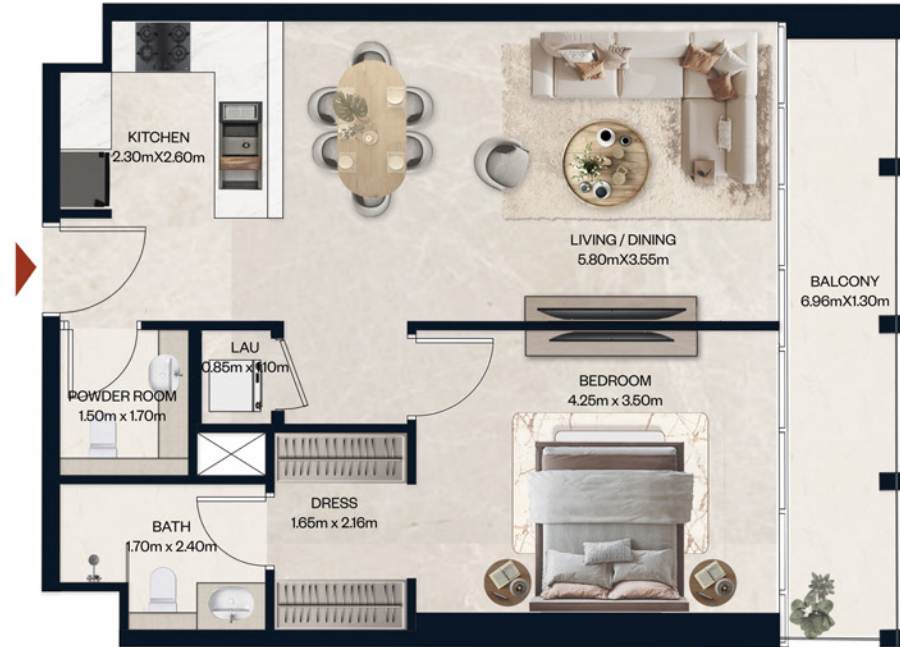
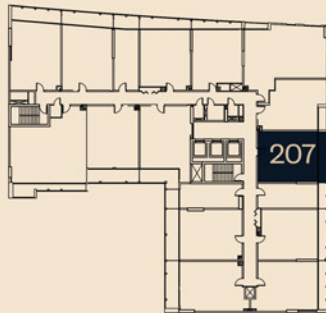
NORAH

RESIDENCE

1 BEDROOM

UNIT - 207	AREA (sq.m.)	AREA (sq.ft.)
SUITE AREA	61.59	662.95
BALCONY AREA	9.42	101.40
TOTAL AREA	71.01	764.07

KEY PLAN



FLOOR PLAN 1. All dimensions are in imperial and metric, and measured from finish to finish excluding construction tolerances. 2. All materials, dimensions, and drawings are approximate only. 3. Information is subject to change without notice, at developer's absolute discretion. 4. Actual area may vary from the stated area. 5. Drawings not to scale. 6. All images used are for illustrative purposes only and do not represent the actual size, features, specifications, fittings, and furnishings. 7. The developer reserves the right to make revisions / alterations, at it's absolute discretion, without any liability whatsoever.

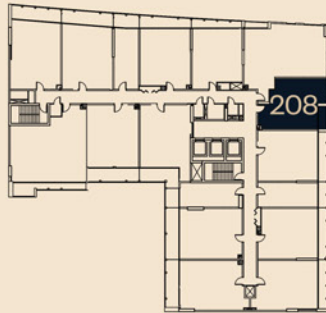
NORAH

RESIDENCE

1 BEDROOM

UNIT - 208	AREA (sq.m.)	AREA (sq.ft.)
SUITE AREA	58.24	626.89
BALCONY AREA	4.37	47.04
TOTAL AREA	62.61	673.68

KEY PLAN



FLOOR PLAN 1. All dimensions are in imperial and metric, and measured from finish to finish excluding construction tolerances. 2. All materials, dimensions, and drawings are approximate only. 3. Information is subject to change without notice, at developer's absolute discretion. 4. Actual area may vary from the stated area. 5. Drawings not to scale. 6. All images used are for illustrative purposes only and do not represent the actual size, features, specifications, fittings, and furnishings. 7. The developer reserves the right to make revisions / alterations, at it's absolute discretion, without any liability whatsoever.

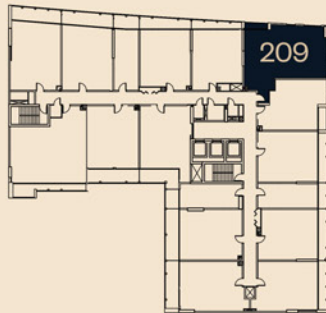
NORAH

RESIDENCE

2 BEDROOM

UNIT - 209	AREA (sq.m.)	AREA (sq.ft.)
SUITE AREA	96.82	1042.16
BALCONY AREA	3.14	33.80
TOTAL AREA	99.96	1075.57

KEY PLAN



FLOOR PLAN 1. All dimensions are in imperial and metric, and measured from finish to finish excluding construction tolerances. 2. All materials, dimensions, and drawings are approximate only. 3. Information is subject to change without notice, at developer's absolute discretion. 4. Actual area may vary from the stated area. 5. Drawings not to scale. 6. All images used are for illustrative purposes only and do not represent the actual size, features, specifications, fittings, and furnishings. 7. The developer reserves the right to make revisions / alterations, at it's absolute discretion, without any liability whatsoever.

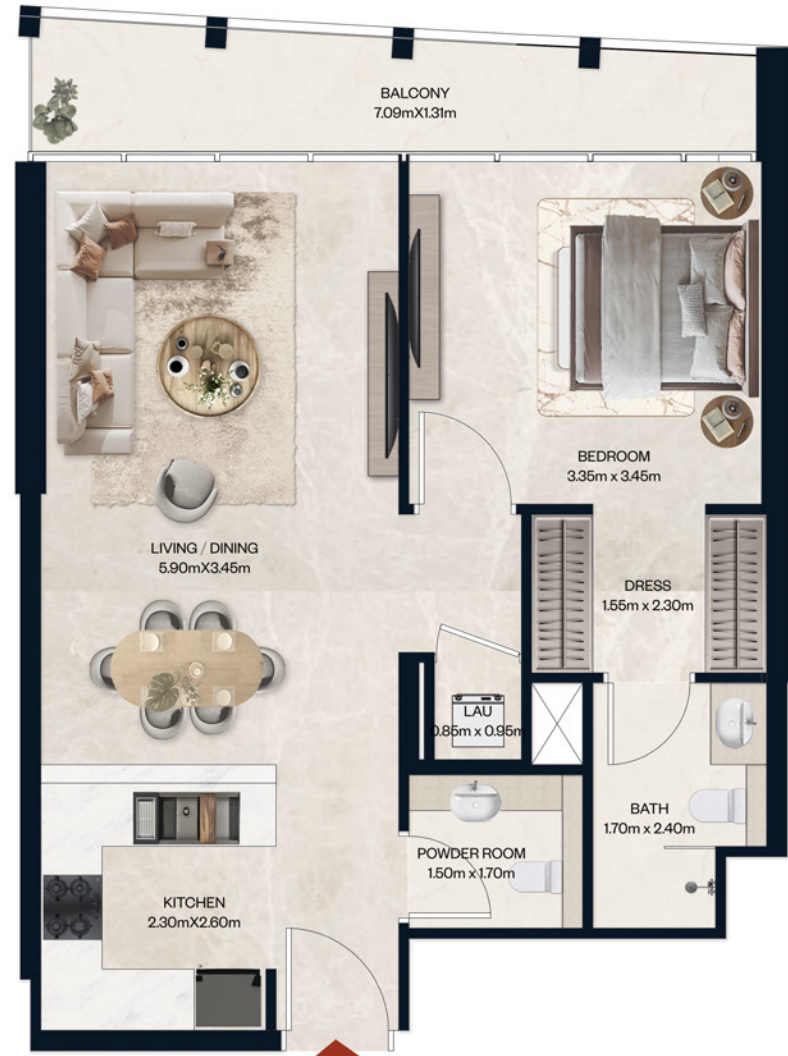
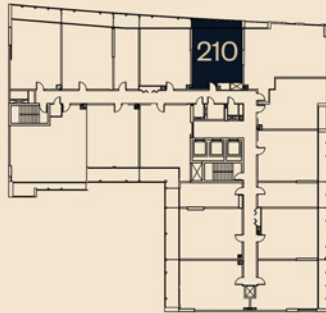
NORAH

RESIDENCE

1 BEDROOM

UNIT - 210	AREA (sq.m.)	AREA (sq.ft.)
SUITE AREA	58.56	630.33
BALCONY AREA	8.25	88.80
TOTAL AREA	66.81	718.88

KEY PLAN



FLOOR PLAN 1. All dimensions are in imperial and metric, and measured from finish to finish excluding construction tolerances. 2. All materials, dimensions, and drawings are approximate only. 3. Information is subject to change without notice, at developer's absolute discretion. 4. Actual area may vary from the stated area. 5. Drawings not to scale. 6. All images used are for illustrative purposes only and do not represent the actual size, features, specifications, fittings, and furnishings. 7. The developer reserves the right to make revisions / alterations, at it's absolute discretion, without any liability whatsoever.

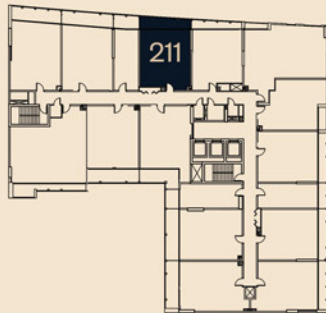
NORAH

RESIDENCE

1 BEDROOM

UNIT - 211	AREA (sq.m.)	AREA (sq.ft.)
SUITE AREA	59.95	645.30
BALCONY AREA	11.44	123.14
TOTAL AREA	71.39	768.16

KEY PLAN



FLOOR PLAN 1. All dimensions are in imperial and metric, and measured from finish to finish excluding construction tolerances. 2. All materials, dimensions, and drawings are approximate only. 3. Information is subject to change without notice, at developer's absolute discretion. 4. Actual area may vary from the stated area. 5. Drawings not to scale. 6. All images used are for illustrative purposes only and do not represent the actual size, features, specifications, fittings, and furnishings. 7. The developer reserves the right to make revisions / alterations, at it's absolute discretion, without any liability whatsoever.

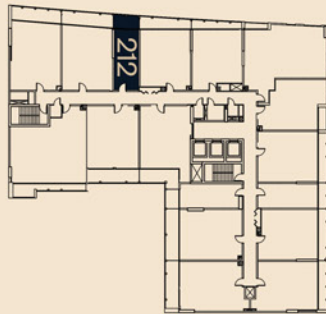
NORAH

RESIDENCE

STUDIO

UNIT - 212	AREA (sq.m.)	AREA (sq.ft.)
SUITE AREA	31.3	336.91
BALCONY AREA	6.95	74.81
TOTAL AREA	38.25	411.57

KEY PLAN



FLOOR PLAN 1. All dimensions are in imperial and metric, and measured from finish to finish excluding construction tolerances. 2. All materials, dimensions, and drawings are approximate only. 3. Information is subject to change without notice, at developer's absolute discretion. 4. Actual area may vary from the stated area. 5. Drawings not to scale. 6. All images used are for illustrative purposes only and do not represent the actual size, features, specifications, fittings, and furnishings. 7. The developer reserves the right to make revisions / alterations, at it's absolute discretion, without any liability whatsoever.

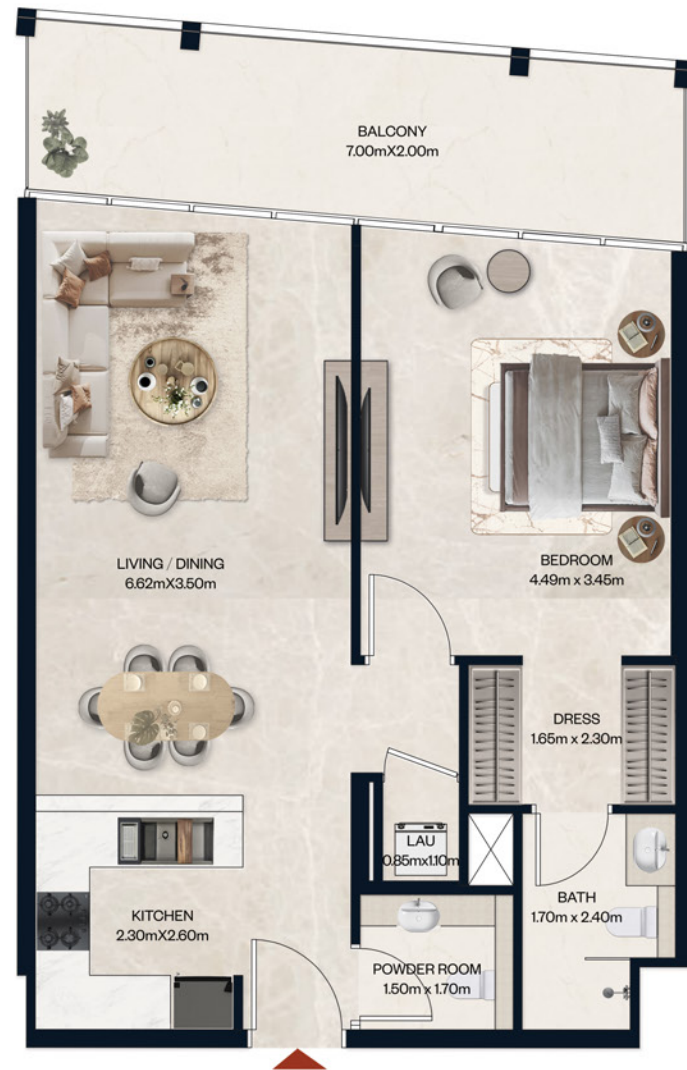
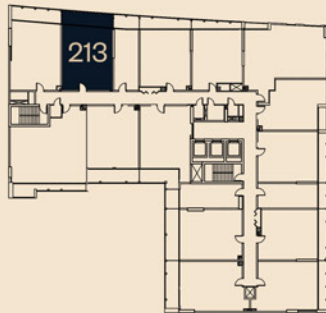
NORAH

RESIDENCE

1 BEDROOM

UNIT - 213	AREA (sq.m.)	AREA (sq.ft.)
SUITE AREA	65.51	705.14
BALCONY AREA	14.01	150.80
TOTAL AREA	79.52	855.64

KEY PLAN



FLOOR PLAN 1. All dimensions are in imperial and metric, and measured from finish to finish excluding construction tolerances. 2. All materials, dimensions, and drawings are approximate only. 3. Information is subject to change without notice, at developer's absolute discretion. 4. Actual area may vary from the stated area. 5. Drawings not to scale. 6. All images used are for illustrative purposes only and do not represent the actual size, features, specifications, fittings, and furnishings. 7. The developer reserves the right to make revisions / alterations, at it's absolute discretion, without any liability whatsoever.

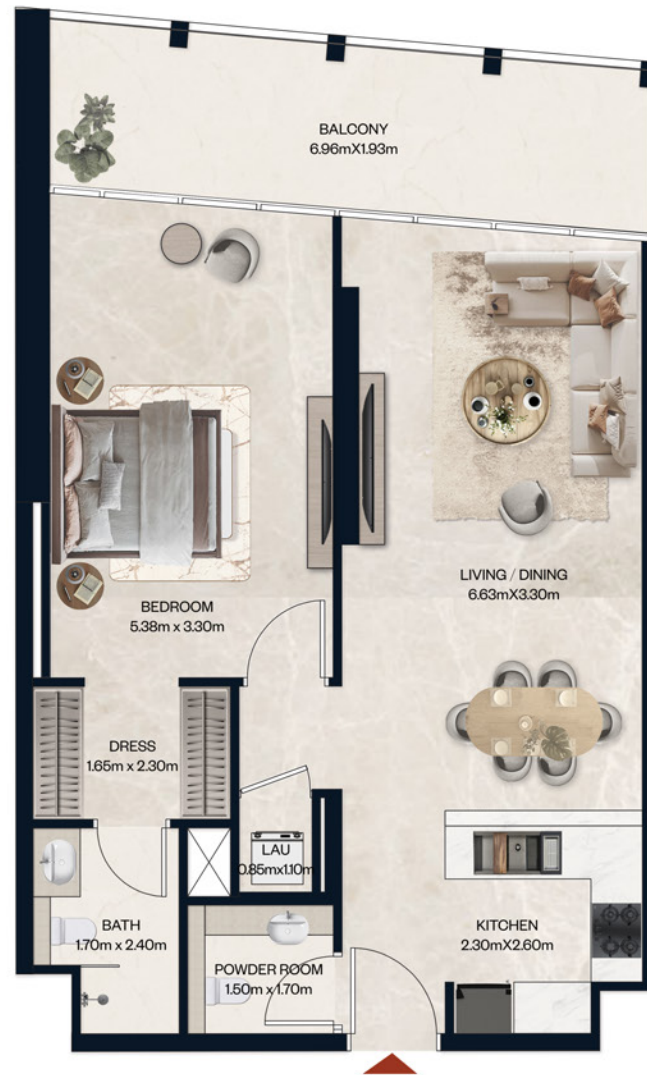
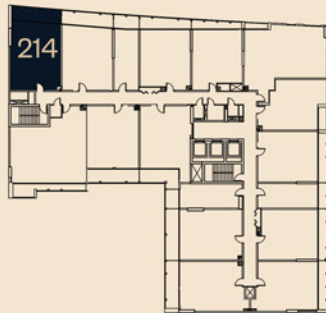
NORAH

RESIDENCE

1 BEDROOM

UNIT - 214	AREA (sq.m.)	AREA (sq.ft.)
SUITE AREA	68.74	739.91
BALCOONY AREA	13.89	149.51
TOTAL AREA	82.63	889.10

KEY PLAN



FLOOR PLAN 1. All dimensions are in imperial and metric, and measured from finish to finish excluding construction tolerances. 2. All materials, dimensions, and drawings are approximate only. 3. Information is subject to change without notice, at developer's absolute discretion. 4. Actual area may vary from the stated area. 5. Drawings not to scale. 6. All images used are for illustrative purposes only and do not represent the actual size, features, specifications, fittings, and furnishings. 7. The developer reserves the right to make revisions / alterations, at it's absolute discretion, without any liability whatsoever.

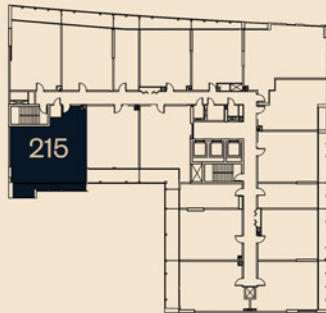
NORAH

RESIDENCE

2 BEDROOM

UNIT - 215	AREA (sq.m.)	AREA (sq.ft.)
SUITE AREA	98.47	1059.92
BALCONY AREA	13.67	147.14
TOTAL AREA	112.14	1206.63

KEY PLAN



FLOOR PLAN 1. All dimensions are in imperial and metric, and measured from finish to finish excluding construction tolerances. 2. All materials, dimensions, and drawings are approximate only. 3. Information is subject to change without notice, at developer's absolute discretion. 4. Actual area may vary from the stated area. 5. Drawings not to scale. 6. All images used are for illustrative purposes only and do not represent the actual size, features, specifications, fittings, and furnishings. 7. The developer reserves the right to make revisions / alterations, at it's absolute discretion, without any liability whatsoever.

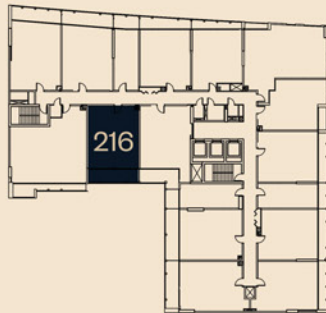
NORAH

RESIDENCE

1 BEDROOM

UNIT - 216	AREA (sq.m.)	AREA (sq.ft.)
SUITE AREA	64.12	690.18
BALCONY AREA	13.98	150.48
TOTAL AREA	78.10	840.36

KEY PLAN



FLOOR PLAN 1. All dimensions are in imperial and metric, and measured from finish to finish excluding construction tolerances. 2. All materials, dimensions, and drawings are approximate only. 3. Information is subject to change without notice, at developer's absolute discretion. 4. Actual area may vary from the stated area. 5. Drawings not to scale. 6. All images used are for illustrative purposes only and do not represent the actual size, features, specifications, fittings, and furnishings. 7. The developer reserves the right to make revisions / alterations, at it's absolute discretion, without any liability whatsoever.

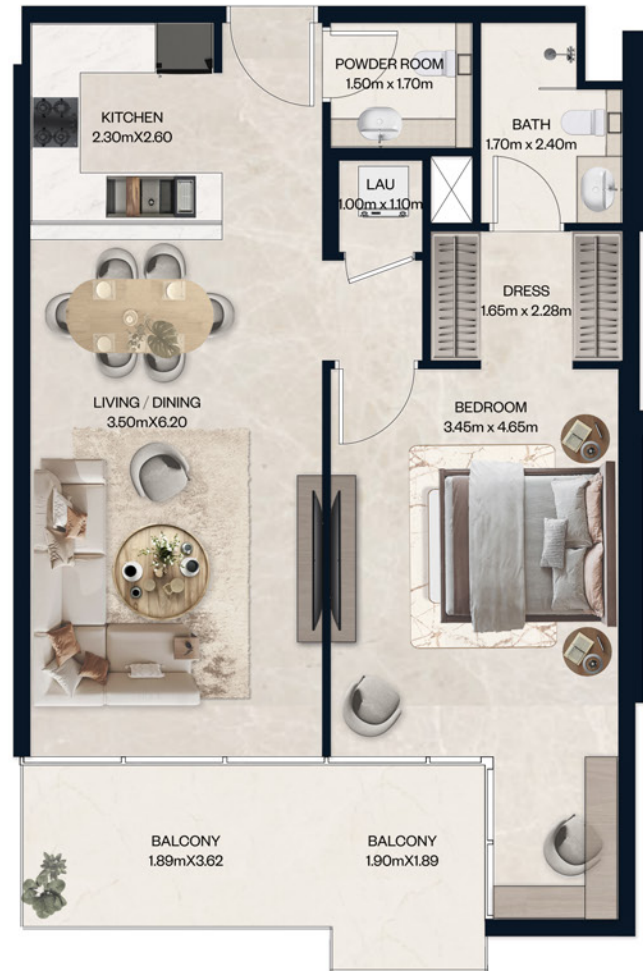
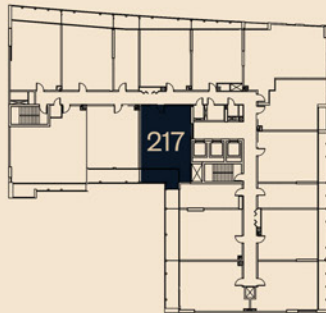
NORAH

RESIDENCE

1 BEDROOM

UNIT - 217	AREA (sq.m.)	AREA (sq.ft.)
SUITE AREA	68.29	735.07
BALCONY AREA	12.48	134.33
TOTAL AREA	80.77	869.09

KEY PLAN



FLOOR PLAN 1. All dimensions are in imperial and metric, and measured from finish to finish excluding construction tolerances. 2. All materials, dimensions, and drawings are approximate only. 3. Information is subject to change without notice, at developer's absolute discretion. 4. Actual area may vary from the stated area. 5. Drawings not to scale. 6. All images used are for illustrative purposes only and do not represent the actual size, features, specifications, fittings, and furnishings. 7. The developer reserves the right to make revisions / alterations, at it's absolute discretion, without any liability whatsoever.

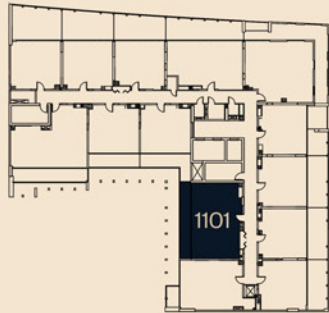
NORAH

RESIDENCE

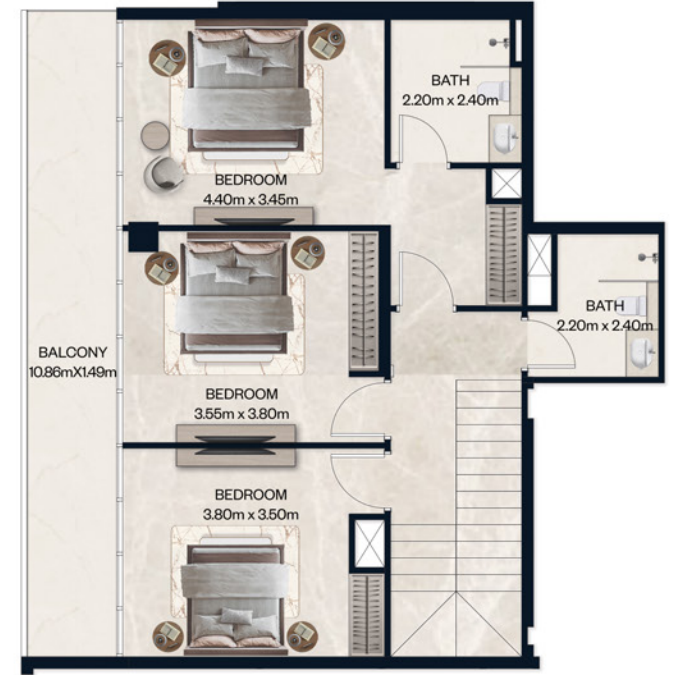
DUPLEX 3 BR

UNIT - 1101	AREA (sq.m.)	AREA (sq.ft.)
SUITE AREA	155.74	1676.37
BALCOONY AREA	33.13	356.61
TOTAL AREA	188.87	2032.24

KEY PLAN



LOWER FLOOR



UPPER FLOOR

FLOOR PLAN 1. All dimensions are in imperial and metric, and measured from finish to finish excluding construction tolerances. 2. All materials, dimensions, and drawings are approximate only. 3. Information is subject to change without notice, at developer's absolute discretion. 4. Actual area may vary from the stated area. 5. Drawings not to scale. 6. All images used are for illustrative purposes only and do not represent the actual size, features, specifications, fittings, and furnishings. 7. The developer reserves the right to make revisions / alterations, at it's absolute discretion, without any liability whatsoever.

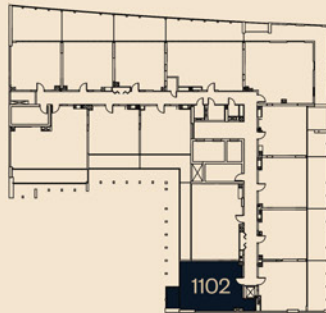
NORAH

RESIDENCE

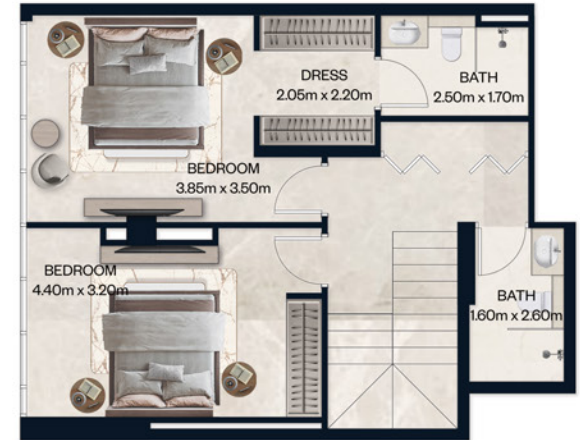
DUPLEX 2BR

UNIT - 1102	AREA (sq.m.)	AREA (sq.ft.)
SUITE AREA	128.76	1385.96
BALCONY AREA	5.93	63.83
TOTAL AREA	134.69	1449.26

KEY PLAN



LOWER FLOOR



UPPER FLOOR

FLOOR PLAN 1. All dimensions are in imperial and metric, and measured from finish to finish excluding construction tolerances. 2. All materials, dimensions, and drawings are approximate only. 3. Information is subject to change without notice, at developer's absolute discretion. 4. Actual area may vary from the stated area. 5. Drawings not to scale. 6. All images used are for illustrative purposes only and do not represent the actual size, features, specifications, fittings, and furnishings. 7. The developer reserves the right to make revisions / alterations, at it's absolute discretion, without any liability whatsoever.

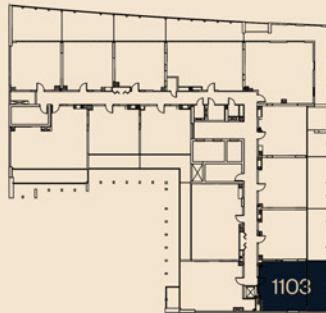
NORAH

RESIDENCE

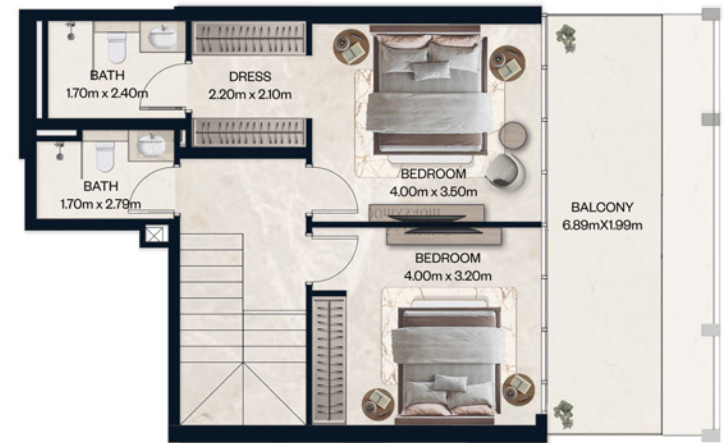
DUOLEX 2BR

UNIT - 1103	AREA (sq.m.)	AREA (sq.ft.)
SUITE AREA	104.25	1122.14
BALCONY AREA	35.31	380.07
TOTAL AREA	139.56	1501.66

KEY PLAN



LOWER FLOOR



UPPER FLOOR

FLOOR PLAN 1. All dimensions are in imperial and metric, and measured from finish to finish excluding construction tolerances. 2. All materials, dimensions, and drawings are approximate only. 3. Information is subject to change without notice, at developer's absolute discretion. 4. Actual area may vary from the stated area. 5. Drawings not to scale. 6. All images used are for illustrative purposes only and do not represent the actual size, features, specifications, fittings, and furnishings. 7. The developer reserves the right to make revisions / alterations, at it's absolute discretion, without any liability whatsoever.

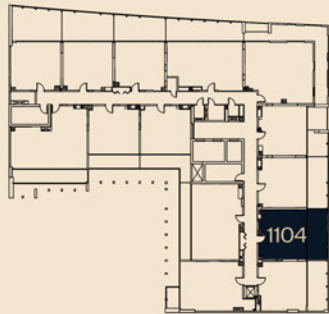
NORAH

RESIDENCE

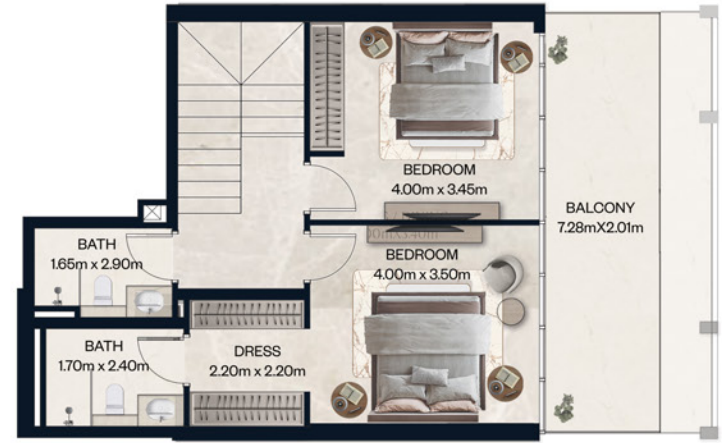
DUPLEX 2 BR

UNIT - 1104	AREA (sq.m.)	AREA (sq.ft.)
SUITE AREA	106.01	1141.08
BALCOONY AREA	35.93	386.75
TOTAL AREA	141.94	1527.27

KEY PLAN



LOWER FLOOR



UPPER FLOOR

FLOOR PLAN 1. All dimensions are in imperial and metric, and measured from finish to finish excluding construction tolerances. 2. All materials, dimensions, and drawings are approximate only. 3. Information is subject to change without notice, at developer's absolute discretion. 4. Actual area may vary from the stated area. 5. Drawings not to scale. 6. All images used are for illustrative purposes only and do not represent the actual size, features, specifications, fittings, and furnishings. 7. The developer reserves the right to make revisions / alterations, at it's absolute discretion, without any liability whatsoever.

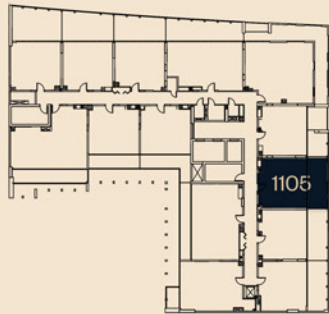
NORAH

RESIDENCE

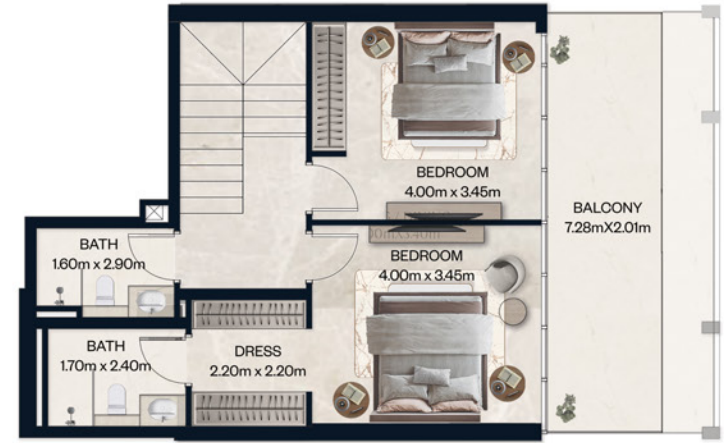
DUPLEX 2 BR

UNIT - 1105	AREA (sq.m.)	AREA (sq.ft.)
SUITE AREA	106.74	1148.94
BALCONY AREA	35.93	386.75
TOTAL AREA	142.67	1535.12

KEY PLAN



LOWER FLOOR



UPPER FLOOR

FLOOR PLAN 1. All dimensions are in imperial and metric, and measured from finish to finish excluding construction tolerances. 2. All materials, dimensions, and drawings are approximate only. 3. Information is subject to change without notice, at developer's absolute discretion. 4. Actual area may vary from the stated area. 5. Drawings not to scale. 6. All images used are for illustrative purposes only and do not represent the actual size, features, specifications, fittings, and furnishings. 7. The developer reserves the right to make revisions / alterations, at it's absolute discretion, without any liability whatsoever.

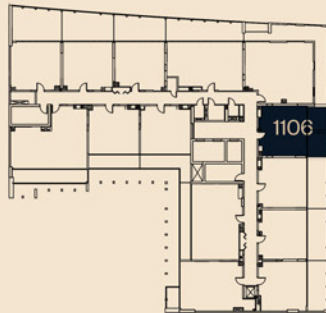
NORAH

RESIDENCE

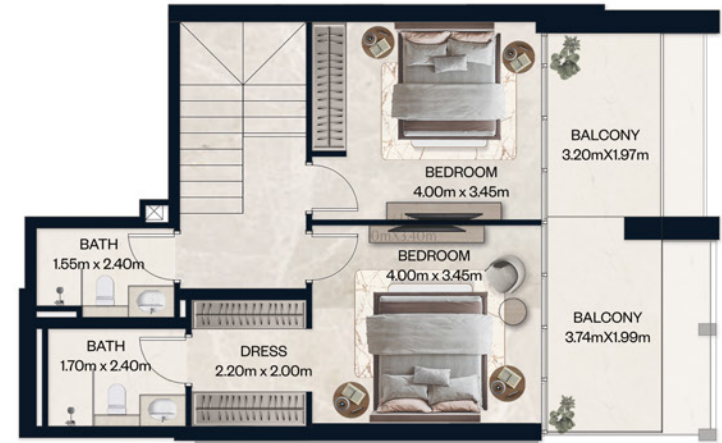
DUPLEX 2 BR

UNIT - 1106	AREA (sq.m.)	AREA (sq.ft.)
SUITE AREA	106.02	1141.19
BALCONY AREA	35.16	378.46
TOTAL AREA	141.18	1519.09

KEY PLAN



LOWER FLOOR



UPPER FLOOR

FLOOR PLAN 1. All dimensions are in imperial and metric, and measured from finish to finish excluding construction tolerances. 2. All materials, dimensions, and drawings are approximate only. 3. Information is subject to change without notice, at developer's absolute discretion. 4. Actual area may vary from the stated area. 5. Drawings not to scale. 6. All images used are for illustrative purposes only and do not represent the actual size, features, specifications, fittings, and furnishings. 7. The developer reserves the right to make revisions / alterations, at it's absolute discretion, without any liability whatsoever.

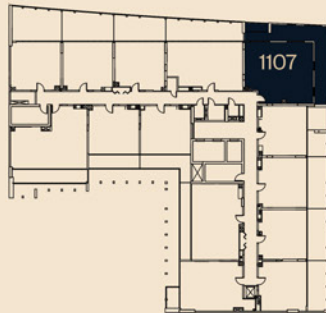
NORAH

RESIDENCE

DUPLEX 3 BR

UNIT - 1107	AREA (sq.m.)	AREA (sq.ft.)
SUITE AREA	162.96	1754.09
BALCONY AREA	90.94	978.87
TOTAL AREA	253.90	2731.96

KEY PLAN



LOWER FLOOR



UPPER FLOOR

FLOOR PLAN 1. All dimensions are in imperial and metric, and measured from finish to finish excluding construction tolerances. 2. All materials, dimensions, and drawings are approximate only. 3. Information is subject to change without notice, at developer's absolute discretion. 4. Actual area may vary from the stated area. 5. Drawings not to scale. 6. All images used are for illustrative purposes only and do not represent the actual size, features, specifications, fittings, and furnishings. 7. The developer reserves the right to make revisions / alterations, at it's absolute discretion, without any liability whatsoever.

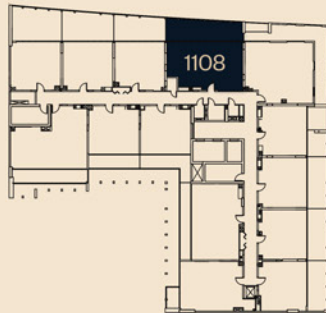
NORAH

RESIDENCE

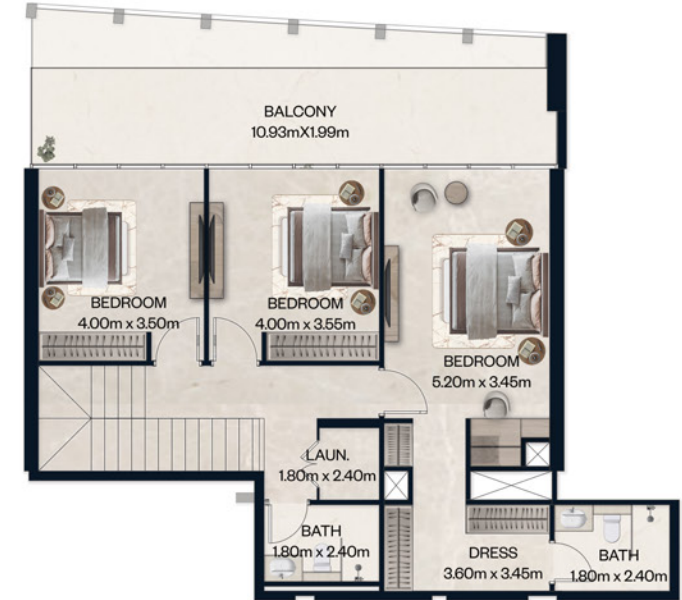
DUPLEX 3 BR

UNIT - 1108	AREA (sq.m.)	AREA (sq.ft.)
SUITE AREA	159.26	1714.26
BALCONY AREA	54.23	583.73
TOTAL AREA	213.49	2297.15

KEY PLAN



LOWER FLOOR



UPPER FLOOR

FLOOR PLAN 1. All dimensions are in imperial and metric, and measured from finish to finish excluding construction tolerances. 2. All materials, dimensions, and drawings are approximate only. 3. Information is subject to change without notice, at developer's absolute discretion. 4. Actual area may vary from the stated area. 5. Drawings not to scale. 6. All images used are for illustrative purposes only and do not represent the actual size, features, specifications, fittings, and furnishings. 7. The developer reserves the right to make revisions / alterations, at it's absolute discretion, without any liability whatsoever.

NORAH

RESIDENCE

DUPLEX 2BR

UNIT - 1109	AREA (sq.m.)	AREA (sq.ft.)
SUITE AREA	104.04	1119.88
BALCONY AREA	40.35	434.32
TOTAL AREA	144.39	1553.63

KEY PLAN



LOWER FLOOR



UPPER FLOOR

FLOOR PLAN 1. All dimensions are in imperial and metric, and measured from finish to finish excluding construction tolerances. 2. All materials, dimensions, and drawings are approximate only. 3. Information is subject to change without notice, at developer's absolute discretion. 4. Actual area may vary from the stated area. 5. Drawings not to scale. 6. All images used are for illustrative purposes only and do not represent the actual size, features, specifications, fittings, and furnishings. 7. The developer reserves the right to make revisions / alterations, at it's absolute discretion, without any liability whatsoever.

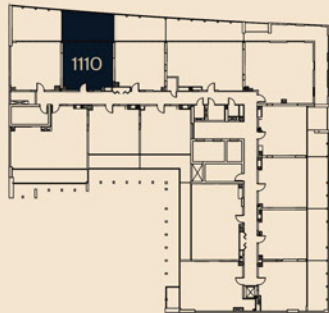
NORAH

RESIDENCE

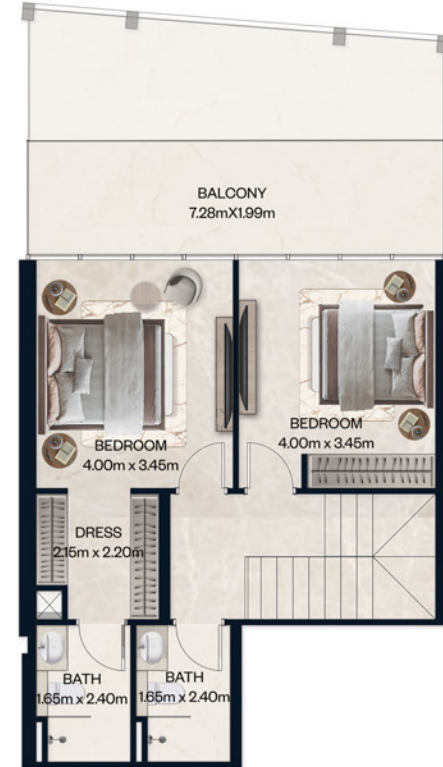
DUPLEX 2BR

UNIT - 1110	AREA (sq.m.)	AREA (sq.ft.)
SUITE AREA	105.66	1137.31
BALCONY AREA	44.28	476.63
TOTAL AREA	149.94	1613.35

KEY PLAN



LOWER FLOOR



UPPER FLOOR

FLOOR PLAN 1. All dimensions are in imperial and metric, and measured from finish to finish excluding construction tolerances. 2. All materials, dimensions, and drawings are approximate only. 3. Information is subject to change without notice, at developer's absolute discretion. 4. Actual area may vary from the stated area. 5. Drawings not to scale. 6. All images used are for illustrative purposes only and do not represent the actual size, features, specifications, fittings, and furnishings. 7. The developer reserves the right to make revisions / alterations, at it's absolute discretion, without any liability whatsoever.

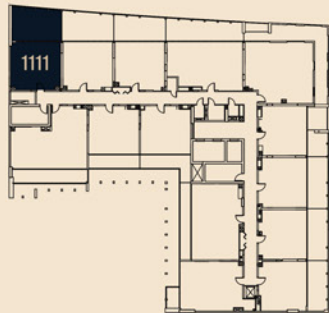
NORAH

RESIDENCE

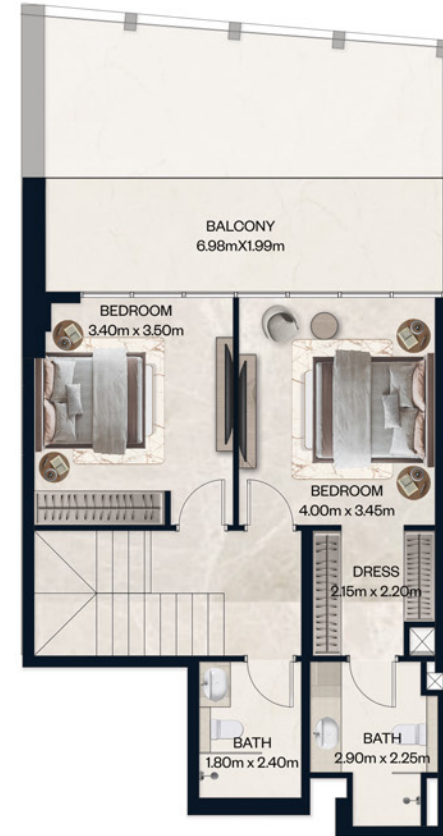
DUPLEX 2 BR

UNIT - 1111	AREA (sq.m.)	AREA (sq.ft.)
SUITE AREA	107.43	1156.37
BALCONY AREA	48.17	518.50
TOTAL AREA	155.60	1674.25

KEY PLAN



LOWER FLOOR



UPPER FLOOR

FLOOR PLAN 1. All dimensions are in imperial and metric, and measured from finish to finish excluding construction tolerances. 2. All materials, dimensions, and drawings are approximate only. 3. Information is subject to change without notice, at developer's absolute discretion. 4. Actual area may vary from the stated area. 5. Drawings not to scale. 6. All images used are for illustrative purposes only and do not represent the actual size, features, specifications, fittings, and furnishings. 7. The developer reserves the right to make revisions / alterations, at it's absolute discretion, without any liability whatsoever.

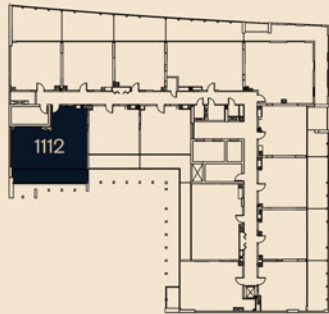
NORAH

RESIDENCE

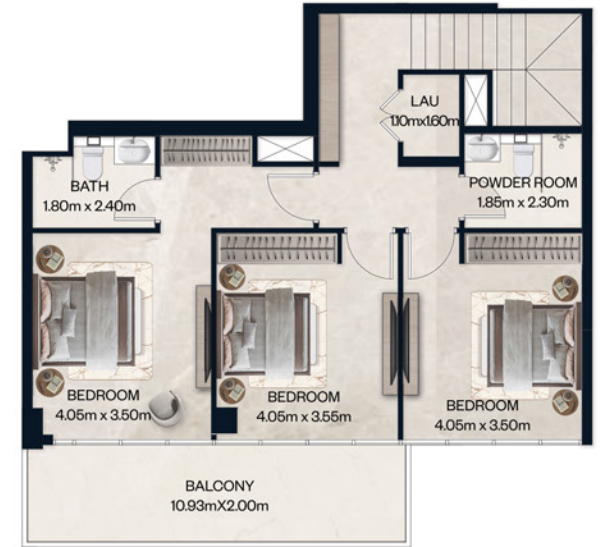
DUPLEX 3 BR

UNIT - 1112	AREA (sq.m.)	AREA (sq.ft.)
SUITE AREA	158.79	1709.20
BALCONY AREA	34.94	376.09
TOTAL AREA	193.73	2084.53

KEY PLAN



LOWER FLOOR



UPPER FLOOR

FLOOR PLAN 1. All dimensions are in imperial and metric, and measured from finish to finish excluding construction tolerances. 2. All materials, dimensions, and drawings are approximate only. 3. Information is subject to change without notice, at developer's absolute discretion. 4. Actual area may vary from the stated area. 5. Drawings not to scale. 6. All images used are for illustrative purposes only and do not represent the actual size, features, specifications, fittings, and furnishings. 7. The developer reserves the right to make revisions / alterations, at it's absolute discretion, without any liability whatsoever.

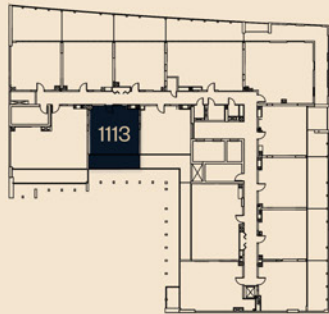
NORAH

RESIDENCE

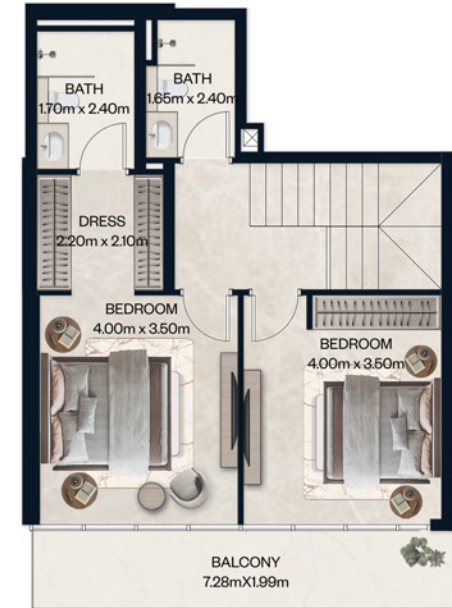
DUPLEX 2BR

UNIT - 1113	AREA (sq.m.)	AREA (sq.ft.)
SUITE AREA	105.27	1133.12
BALCONY AREA	28.25	304.08
TOTAL AREA	133.52	1436.67

KEY PLAN



LOWER FLOOR



UPPER FLOOR

FLOOR PLAN 1. All dimensions are in imperial and metric, and measured from finish to finish excluding construction tolerances. 2. All materials, dimensions, and drawings are approximate only. 3. Information is subject to change without notice, at developer's absolute discretion. 4. Actual area may vary from the stated area. 5. Drawings not to scale. 6. All images used are for illustrative purposes only and do not represent the actual size, features, specifications, fittings, and furnishings. 7. The developer reserves the right to make revisions / alterations, at it's absolute discretion, without any liability whatsoever.

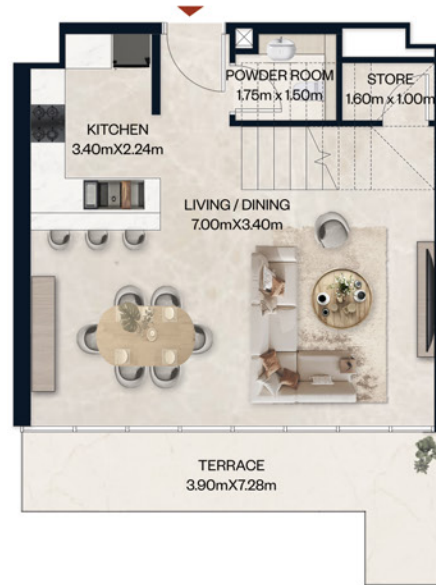
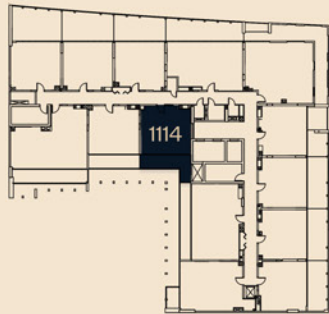
NORAH

RESIDENCE

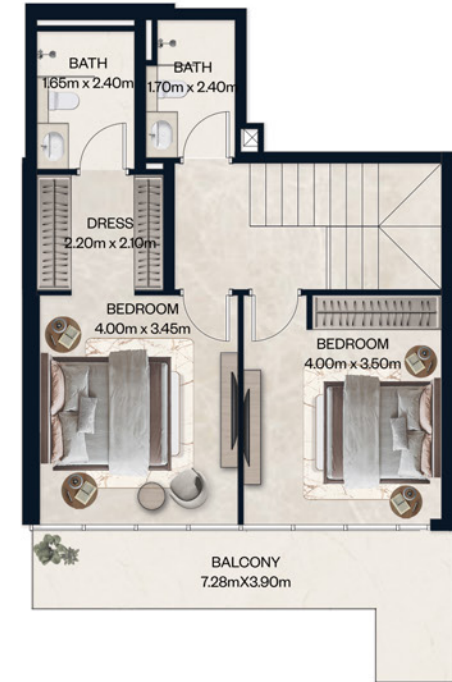
DUPLEX 2 BR

UNIT - 1114	AREA (sq.m.)	AREA (sq.ft.)
SUITE AREA	105.95	1140.44
BALCONY AREA	34.50	371.35
TOTAL AREA	140.45	1511.24

KEY PLAN



LOWER FLOOR



UPPER FLOOR

FLOOR PLAN 1. All dimensions are in imperial and metric, and measured from finish to finish excluding construction tolerances. 2. All materials, dimensions, and drawings are approximate only. 3. Information is subject to change without notice, at developer's absolute discretion. 4. Actual area may vary from the stated area. 5. Drawings not to scale. 6. All images used are for illustrative purposes only and do not represent the actual size, features, specifications, fittings, and furnishings. 7. The developer reserves the right to make revisions / alterations, at it's absolute discretion, without any liability whatsoever.