



SENSIA

FLOOR PLANS

BEYOND

SENIA

1 BEDROOM
TYPE A (TYPICAL)

Internal Area	690 - 769	SQ FT
External Area	66 - 67	SQ FT
TOTAL AREA	756 - 835	SQ FT

KEY PLAN



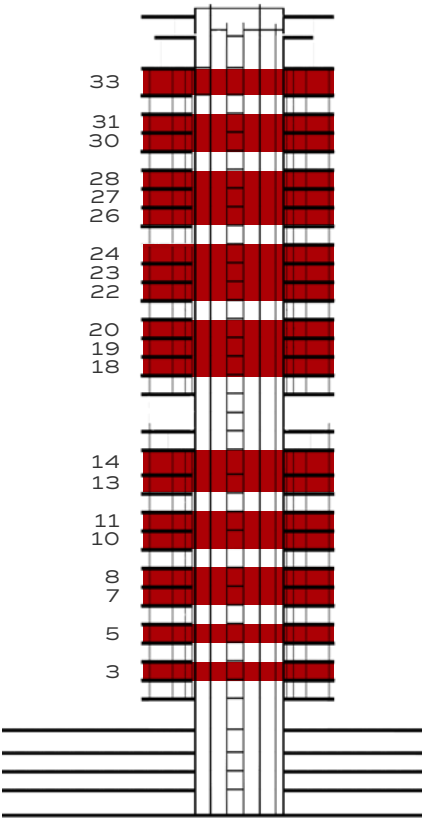
FLOORS
3, 5, 7, 8, 10, 11, 13, 14, 18-20,
22-24, 26-28, 30, 31, 33

UNITS
02, 03, 05, 06

BEYOND



KEY SECTION



The renderings and visualisations in this brochure are for illustrative and marketing purposes only. While the information provided is accurate and reliable at the time of publication, it is important to note that only the information included in the final Sales and Purchase Agreement will carry legal significance.

SENIA

1 BEDROOM
TYPE A (FEATURE)

Internal Area	690 - 769	SQ FT
External Area	71 - 116	SQ FT
TOTAL AREA	761 - 871	SQ FT

KEY PLAN



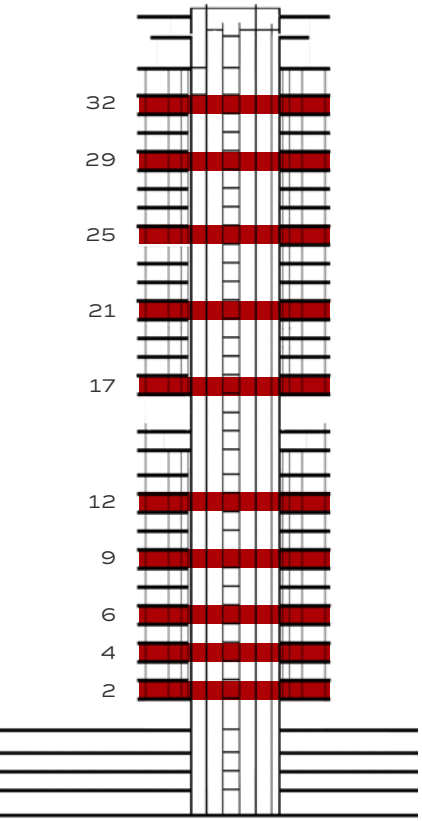
FLOORS
2, 4, 6, 9, 12, 17, 21, 25, 29, 32

UNITS
02, 03, 05, 06

BEYOND



KEY SECTION



The renderings and visualisations in this brochure are for illustrative and marketing purposes only. While the information provided is accurate and reliable at the time of publication, it is important to note that only the information included in the final Sales and Purchase Agreement will carry legal significance.

SENIA

2 BEDROOM
TYPE A (TYPICAL)

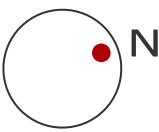
Internal Area	940	SQ FT
External Area	202	SQ FT
TOTAL AREA	1,142	SQ FT

KEY PLAN

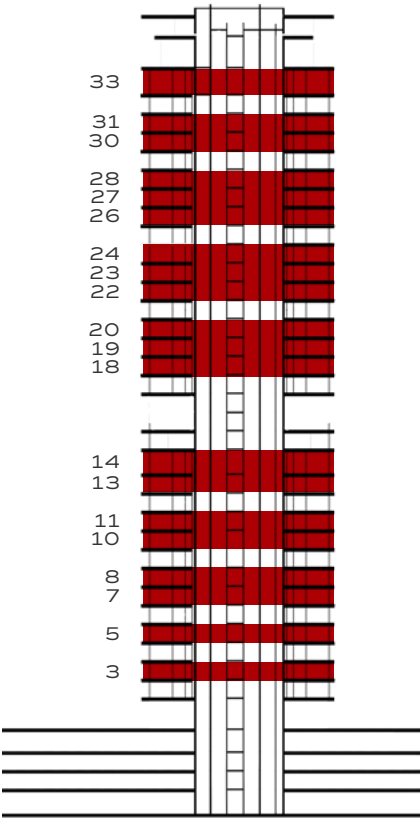


FLOORS
3, 5, 7, 8, 10, 11, 13, 14, 18-20,
22-24, 26-28, 30, 31, 33
UNITS
04

BEYOND



KEY SECTION



The renderings and visualisations in this brochure are for illustrative and marketing purposes only. While the information provided is accurate and reliable at the time of publication, it is important to note that only the information included in the final Sales and Purchase Agreement will carry legal significance.

SENIA

2 BEDROOM
TYPE A (FEATURE)

Internal Area	940	SQ FT
External Area	272 - 478	SQ FT
TOTAL AREA	1,211 - 1,417	SQ FT

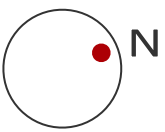
KEY PLAN



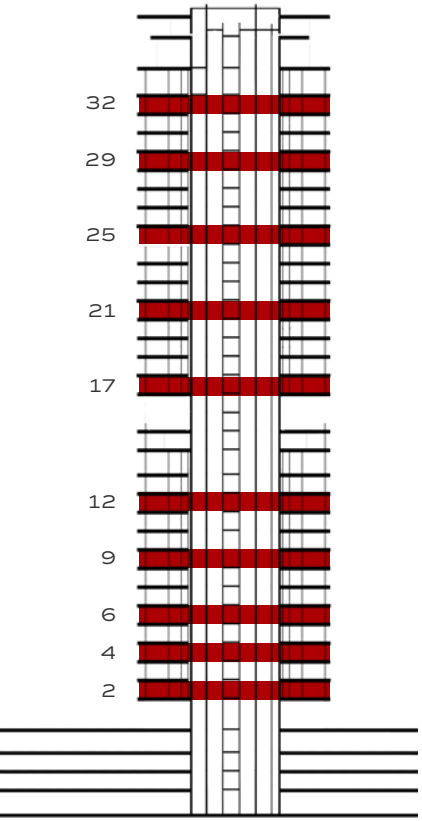
FLOORS
2, 4, 6, 9, 12, 17, 21, 25, 29, 32

UNITS
04

BEYOND



KEY SECTION



The renderings and visualisations in this brochure are for illustrative and marketing purposes only. While the information provided is accurate and reliable at the time of publication, it is important to note that only the information included in the final Sales and Purchase Agreement will carry legal significance.

SENIA

2 BEDROOM
TYPE B (TYPICAL)

Internal Area	1,135 - 1,159	SQ FT
External Area	113 - 258	SQ FT
TOTAL AREA	1,272 - 1,411	SQ FT

KEY PLAN



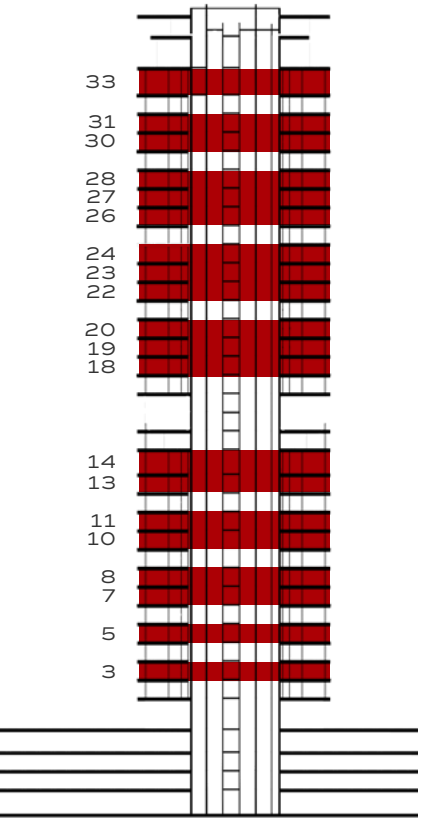
FLOORS
3, 5, 7, 8, 10, 11, 13, 14, 18-20,
22-24, 26-28, 30, 31, 33

UNITS
01, 07, 08

BEYOND



KEY SECTION



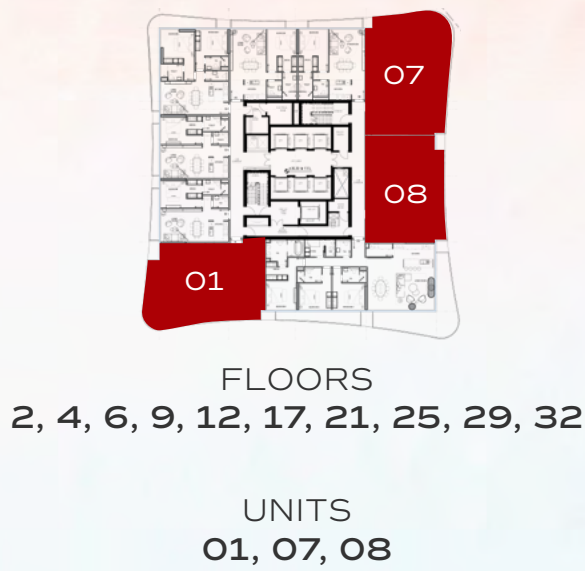
The renderings and visualisations in this brochure are for illustrative and marketing purposes only. While the information provided is accurate and reliable at the time of publication, it is important to note that only the information included in the final Sales and Purchase Agreement will carry legal significance.

SENIA

2 BEDROOM
TYPE B (FEATURE)

Internal Area	1,135 - 1,159	SQ FT
External Area	165 - 597	SQ FT
TOTAL AREA	1,325 - 1,732	SQ FT

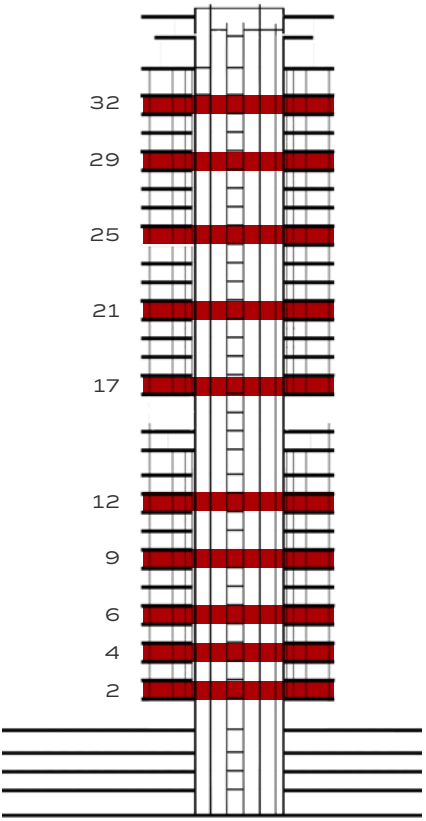
KEY PLAN



BEYOND



KEY SECTION



The renderings and visualisations in this brochure are for illustrative and marketing purposes only. While the information provided is accurate and reliable at the time of publication, it is important to note that only the information included in the final Sales and Purchase Agreement will carry legal significance.

3 BEDROOM
TYPE A (TYPICAL)

Internal Area	1,860	SQ FT
External Area	346	SQ FT
TOTAL AREA	2,207	SQ FT

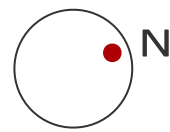
KEY PLAN



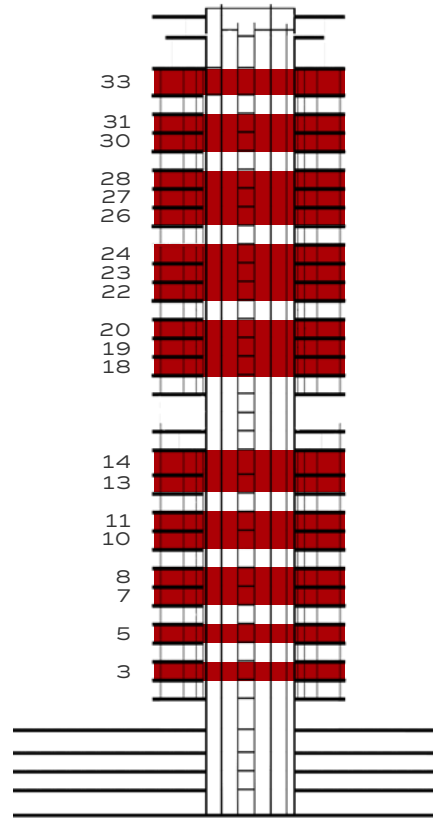
FLOORS
3, 5, 7, 8, 10, 11, 13, 14, 18-20,
22-24, 26-28, 30, 31, 33

UNITS
09

BEYOND



KEY SECTION



The renderings and visualisations in this brochure are for illustrative and marketing purposes only. While the information provided is accurate and reliable at the time of publication, it is important to note that only the information included in the final Sales and Purchase Agreement will carry legal significance.

SENIA

3 BEDROOM
TYPE A (FEATURE)

Internal Area	1,860	SQ FT
External Area	673 - 802	SQ FT
TOTAL AREA	2,533 - 2,662	SQ FT

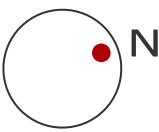
KEY PLAN



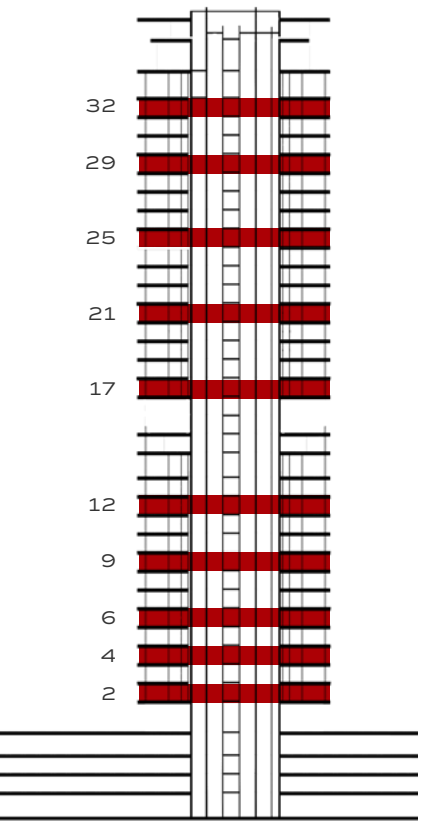
FLOORS
2, 4, 6, 9, 12, 17, 21, 25, 29, 32

UNITS
09

BEYOND



KEY SECTION



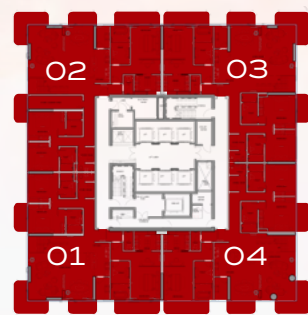
The renderings and visualisations in this brochure are for illustrative and marketing purposes only. While the information provided is accurate and reliable at the time of publication, it is important to note that only the information included in the final Sales and Purchase Agreement will carry legal significance.

SENIA

SIGNATURE
3 BEDROOM

Internal Area	2,354 - 2,563	SQ FT
External Area	1,325 - 1,629	SQ FT
TOTAL AREA	3,754 - 4,078	SQ FT

KEY PLAN



LOWER FLOOR
15

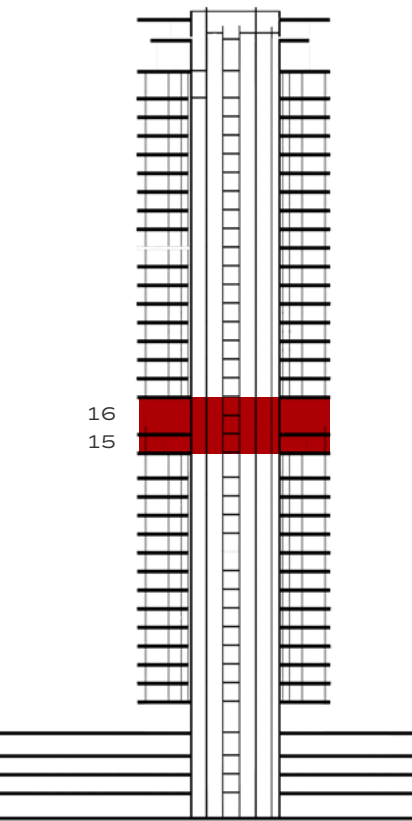


UPPER FLOOR
16

BEYOND



KEY SECTION



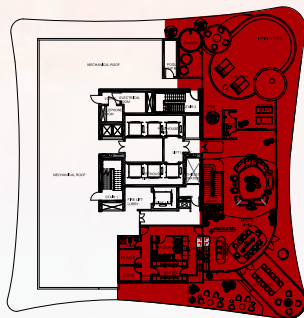
The renderings and visualisations in this brochure are for illustrative and marketing purposes only. While the information provided is accurate and reliable at the time of publication, it is important to note that only the information included in the final Sales and Purchase Agreement will carry legal significance.

SENSIA

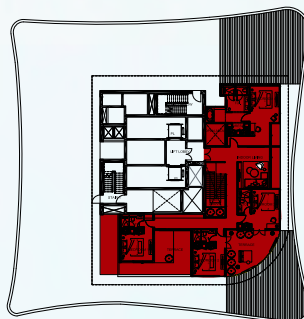
PENTHOUSE

Internal Area	4,663	SQ FT
External Area	4,463	SQ FT
TOTAL AREA	9,126	SQ FT

KEY PLAN



LOWER FLOOR
34



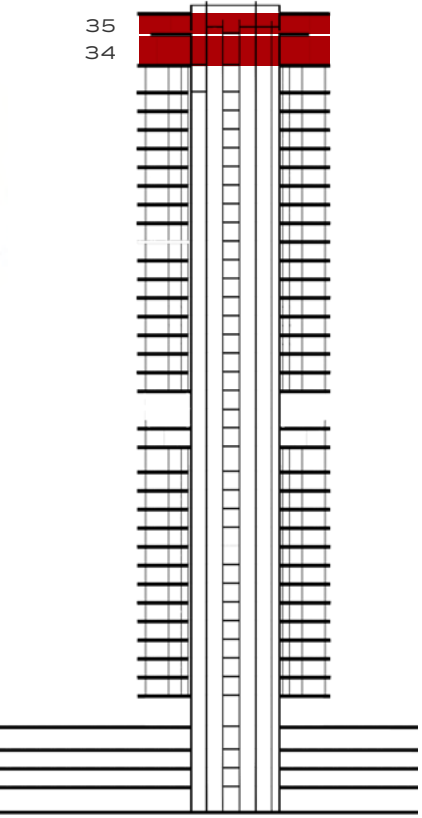
UPPER FLOOR
35

BEYOND



LOWER LEVEL

KEY SECTION



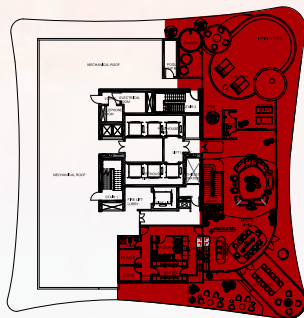
The renderings and visualisations in this brochure are for illustrative and marketing purposes only. While the information provided is accurate and reliable at the time of publication, it is important to note that only the information included in the final Sales and Purchase Agreement will carry legal significance.

SENSIA

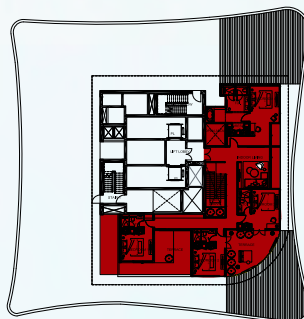
PENTHOUSE

Internal Area	4,663	SQ FT
External Area	4,463	SQ FT
TOTAL AREA	9,126	SQ FT

KEY PLAN



LOWER FLOOR
34

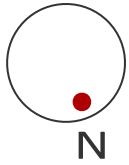


UPPER FLOOR
35

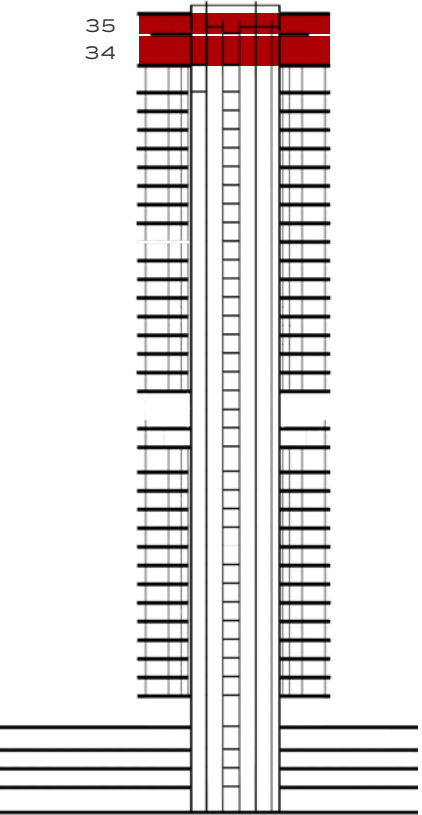
BEYOND



UPPER LEVEL

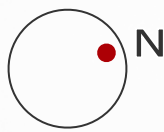


KEY SECTION

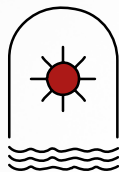


The renderings and visualisations in this brochure are for illustrative and marketing purposes only. While the information provided is accurate and reliable at the time of publication, it is important to note that only the information included in the final Sales and Purchase Agreement will carry legal significance.

FLOOR
2
1BR, 2BR & 3BR



DUBAI
SKYLINE
VIEW



SUNSET
VIEW

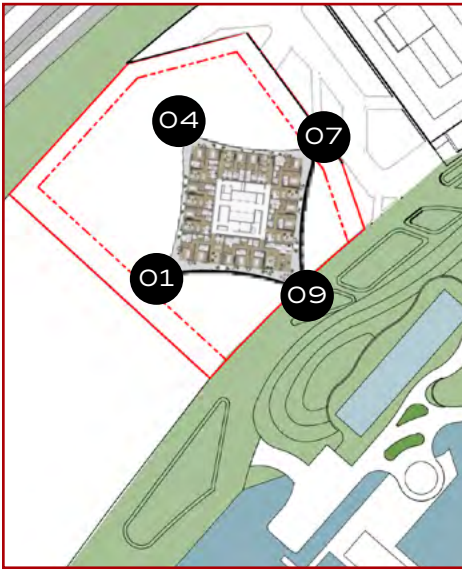
LEGEND

UNIT TYPE



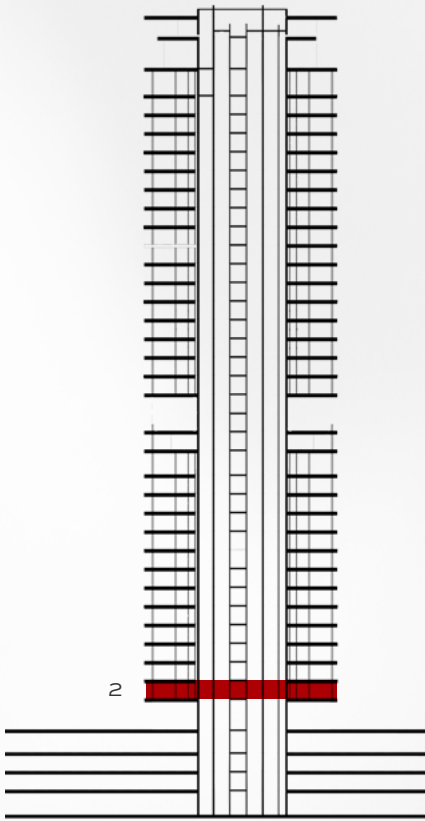
- 1BR - TYPE A
- 2BR - TYPE A
- 2BR - TYPE B
- 3BR - TYPE A

SITING PLAN



BEYOND

KEY SECTION



The renderings and visualisations in this brochure are for illustrative and marketing purposes only. While the information provided is accurate and reliable at the time of publication, it is important to note that only the information included in the final Sales and Purchase Agreement will carry legal significance.



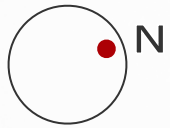
MARINA
VIEW



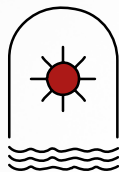
OPEN OCEAN
COVE VIEW



FLOORS
3, 5, 7, 8, 10, 11, 13, 14, 18-20, 22-24, 26-28, 30, 31, 33
1BR, 2BR & 3BR



DUBAI
SKYLINE
VIEW



SUNSET
VIEW

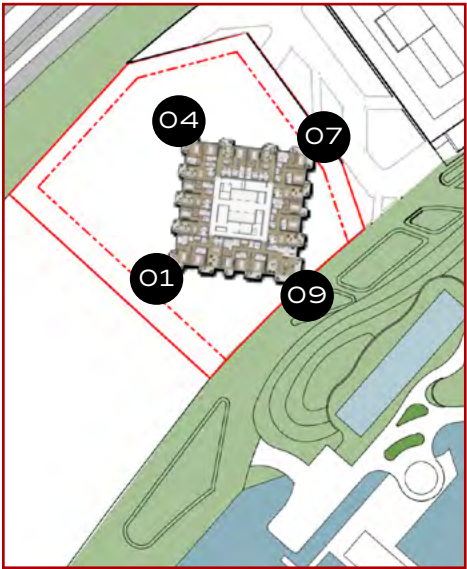
LEGEND

UNIT TYPE



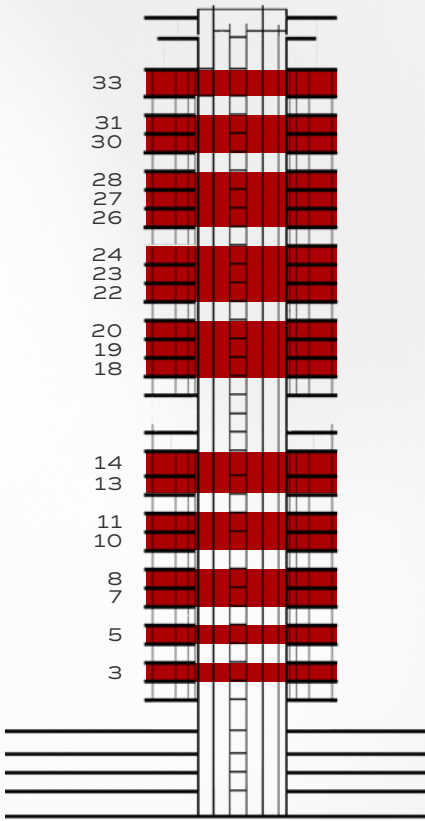
- 1BR - TYPE A
- 2BR - TYPE A
- 2BR - TYPE B
- 3BR - TYPE A

SITING PLAN



BEYOND

KEY SECTION



The renderings and visualisations in this brochure are for illustrative and marketing purposes only. While the information provided is accurate and reliable at the time of publication, it is important to note that only the information included in the final Sales and Purchase Agreement will carry legal significance.



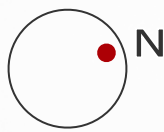
MARINA
VIEW



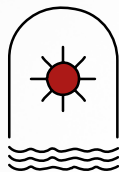
OPEN OCEAN
COVE VIEW

SENIA

FLOORS
4, 6, 9, 12, 17, 21, 25, 29, 32
1BR, 2BR & 3BR



DUBAI
SKYLINE
VIEW



SUNSET
VIEW

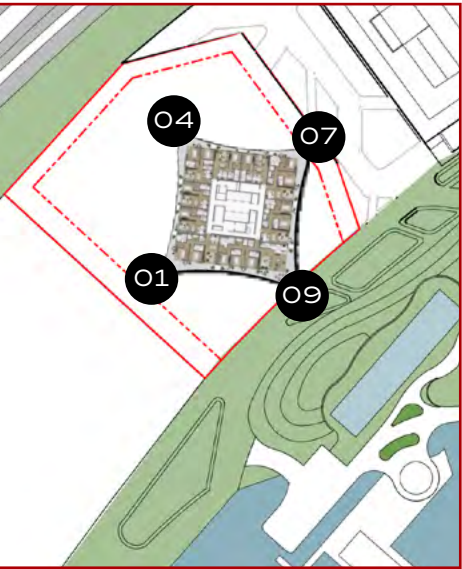
LEGEND

UNIT TYPE



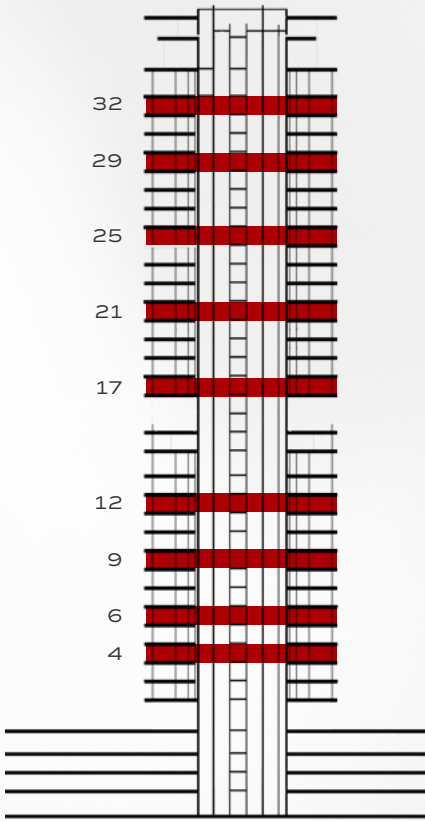
- 1BR - TYPE A
- 2BR - TYPE A
- 2BR - TYPE B
- 3BR - TYPE A

SITING PLAN



BEYOND

KEY SECTION



The renderings and visualisations in this brochure are for illustrative and marketing purposes only. While the information provided is accurate and reliable at the time of publication, it is important to note that only the information included in the final Sales and Purchase Agreement will carry legal significance.

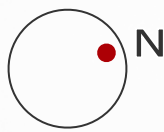


MARINA
VIEW

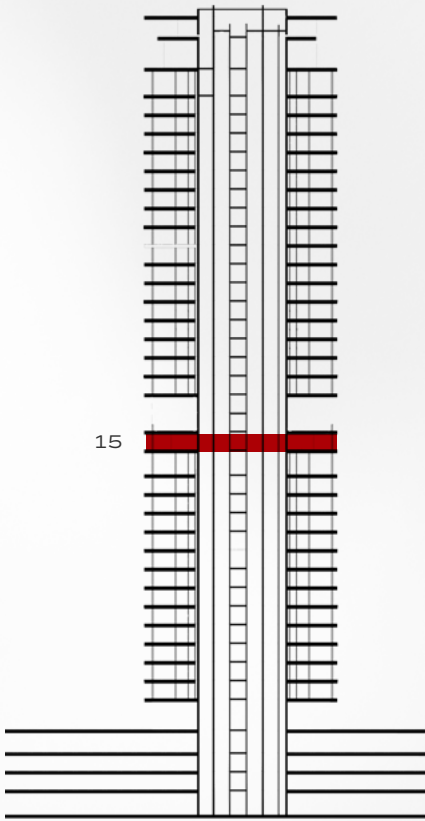


OPEN OCEAN
COVE VIEW

FLOOR
15
DUPLEX



KEY SECTION



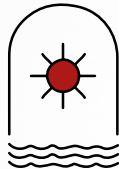
The renderings and visualisations in this brochure are for illustrative and marketing purposes only. While the information provided is accurate and reliable at the time of publication, it is important to note that only the information included in the final Sales and Purchase Agreement will carry legal significance.



DUBAI
SKYLINE
VIEW



MARINA
VIEW



SUNSET
VIEW

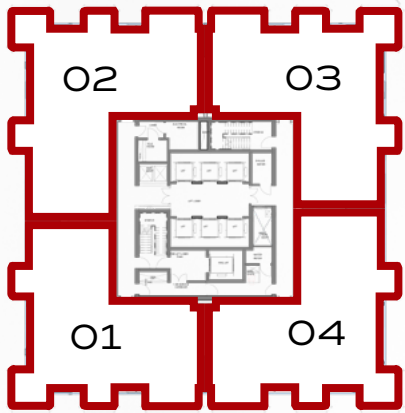


OPEN OCEAN
COVE VIEW



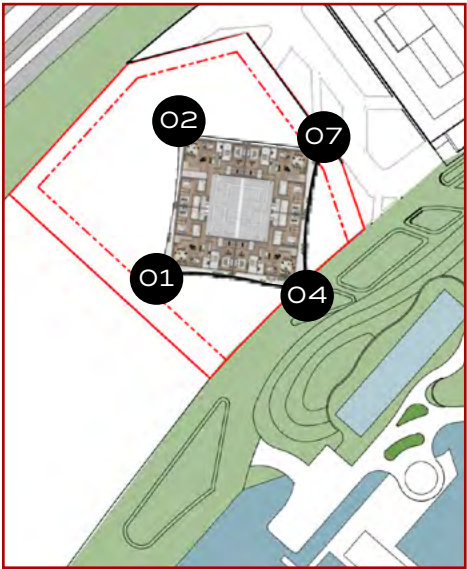
LEGEND

UNIT TYPE



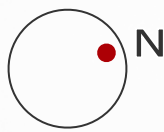
DUPLEX

SITING PLAN

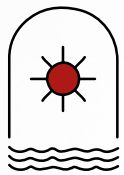


BEYOND

FLOOR
16
DUPLEX



DUBAI
SKYLINE
VIEW



SUNSET
VIEW

LEGEND
UNIT TYPE



DUPLEX

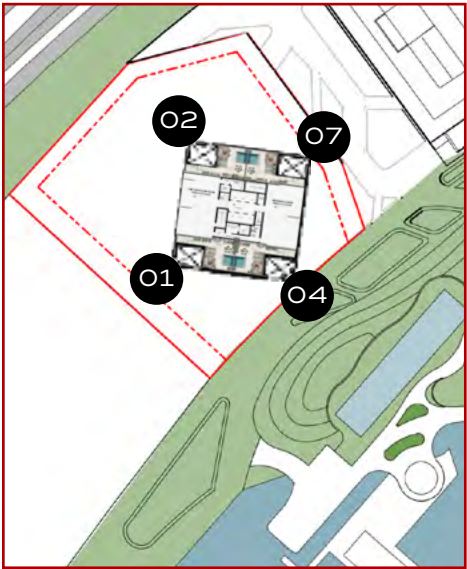


MARINA
VIEW



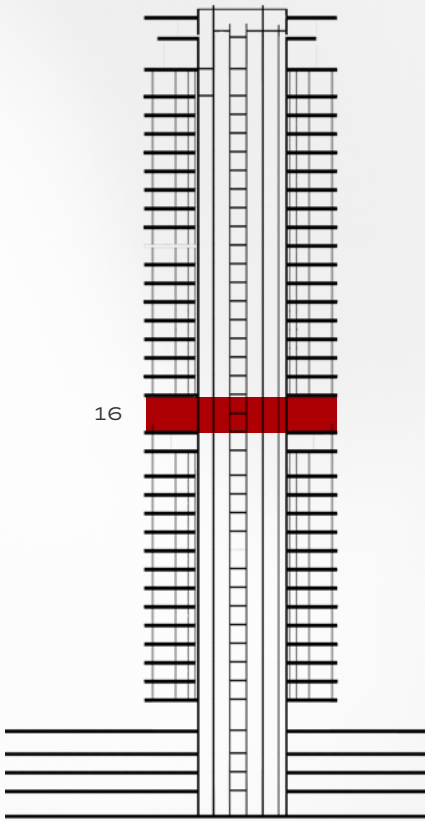
OPEN OCEAN
COVE VIEW

SITING PLAN



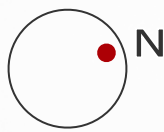
BEYOND

KEY SECTION

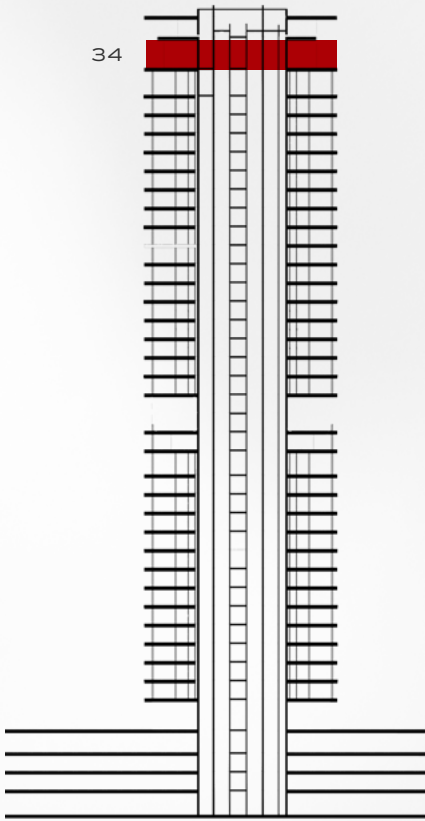


The renderings and visualisations in this brochure are for illustrative and marketing purposes only. While the information provided is accurate and reliable at the time of publication, it is important to note that only the information included in the final Sales and Purchase Agreement will carry legal significance.

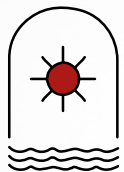
FLOOR
34
PENTHOUSE



KEY SECTION



DUBAI
SKYLINE
VIEW



SUNSET
VIEW



MARINA
VIEW



OPEN OCEAN
COVE VIEW

SITING PLAN

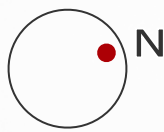


BEYOND

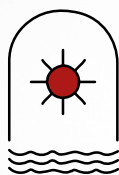
The renderings and visualisations in this brochure are for illustrative and marketing purposes only. While the information provided is accurate and reliable at the time of publication, it is important to note that only the information included in the final Sales and Purchase Agreement will carry legal significance.



FLOOR
35
PENTHOUSE

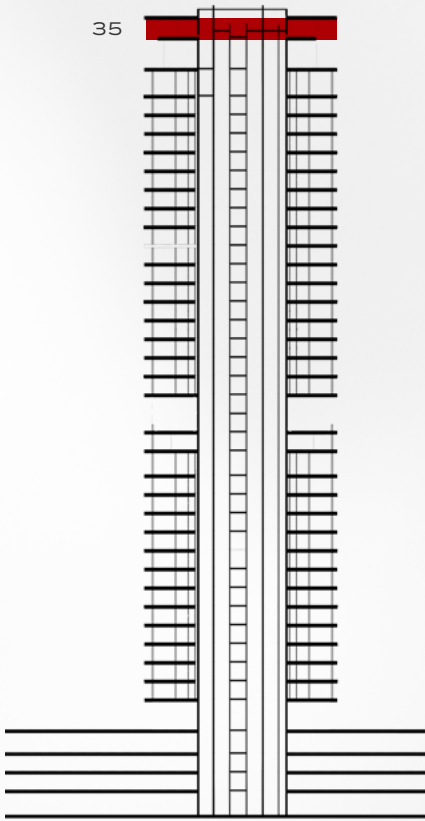


DUBAI
SKYLINE
VIEW



SUNSET
VIEW

KEY SECTION



MARINA
VIEW

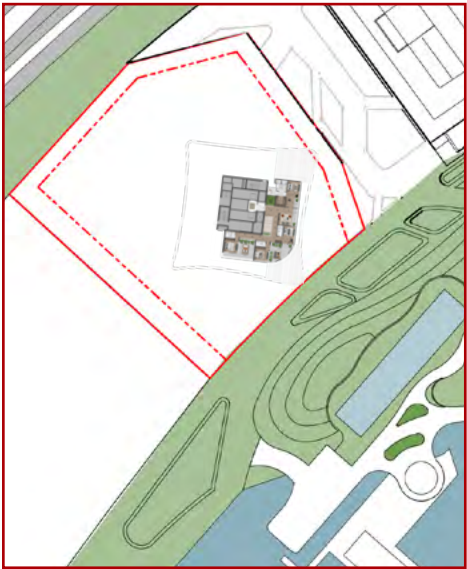


OPEN OCEAN
COVE VIEW

The renderings and visualisations in this brochure are for illustrative and marketing purposes only. While the information provided is accurate and reliable at the time of publication, it is important to note that only the information included in the final Sales and Purchase Agreement will carry legal significance.



SITING PLAN



BEYOND