



Roof Top Amenities

- Swimming Pools with Changing Rooms
- Indoor & Outdoor Gym
- SPA & Wellness Centre
- Steam Room
- Sauna
- Prayer Rooms
- Children's Play Area
- BBQ Area
- Dog Park
- Zen Garden
- Sky Gardens
- Rainforest
- Multipurpose Hall
- Business Centre & Co-Working Space



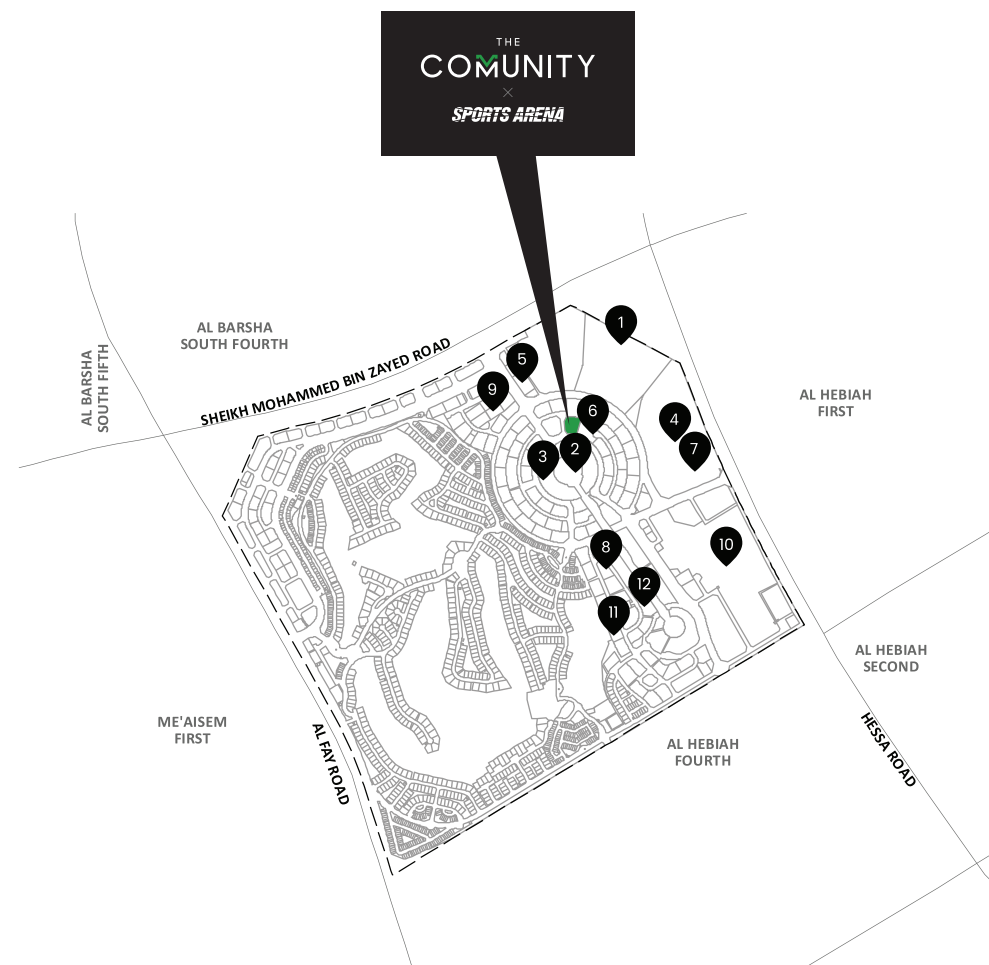


Location

Where to Find Us

Dubai Sports City embodies a vibrant spirit of sportsmanship and community, continually expanding to offer a diverse array of residential and commercial opportunities alongside world-class sports facilities. It stands as a supportive environment that celebrates achievements both on and off the field.

Dubai Sports City boasts exceptional connectivity via major highways, a high walkability score, and close proximity to other prominent Dubai neighbourhoods and landmarks such as Motor City, Dubai Marina, Global Village, Ain Dubai, Bluewaters Island, Mall of the Emirates, Burj Al Arab, Dubai Marina, and Al Maktoum International Airport, among others.



- | | |
|---------------------------------------|----------------------------------|
| ① Dubai International Cricket Stadium | ⑦ Outdoor Sports Arena |
| ② Canal | ⑧ Carrefour City |
| ③ Canal Walk | ⑨ Renaissance School |
| ④ Outdoor Sports Arena | ⑩ Lotus Holistic Yoga Center |
| ⑤ Metro Station | ⑪ Victory Heights Primary School |
| ⑥ Shopping Mall | ⑫ Aster Clinic |

FLOOR PLANS



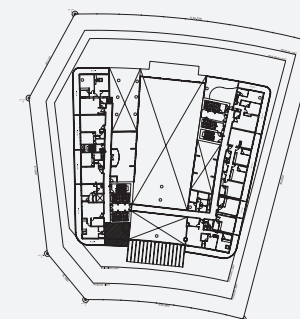
Floor Plan



Studio

Type	1
Total Area	574.47 sq.ft.

Key Plan

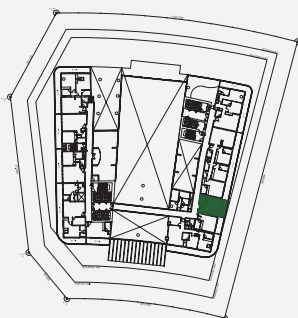


Disclaimer: All images used are for illustrative purposes only and do not represent the actual size, features, specifications, fittings, and furnishings. All materials, dimensions, and drawings are approximate only.

Studio

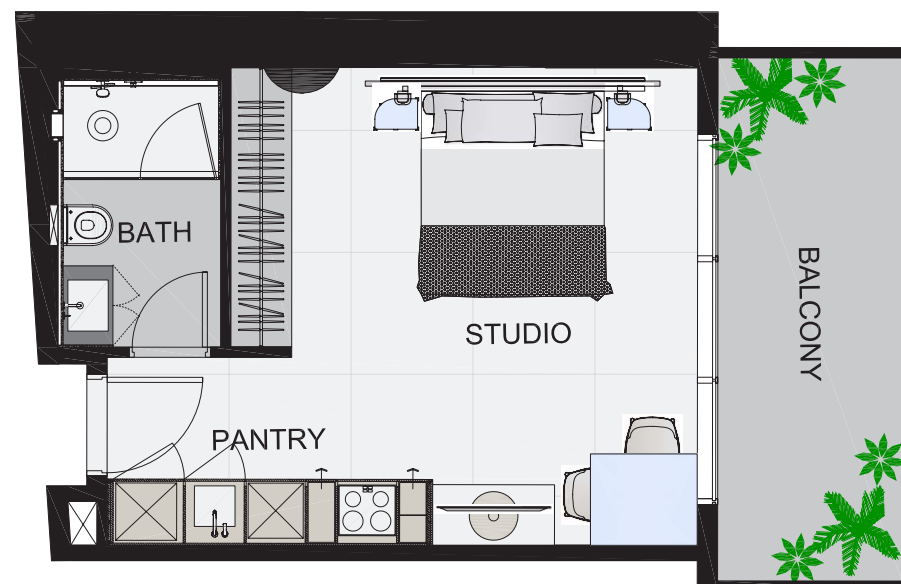
Type	2
Total Area	480.93 - 534.21 sq.ft.

Key Plan



Disclaimer: All images used are for illustrative purposes only and do not represent the actual size, features, specifications, fittings, and furnishings. All materials, dimensions, and drawings are approximate only.

Floor Plan





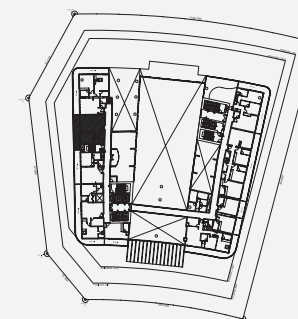
Floor Plan



1 Bedroom

Type	1
Total Area	958.10 sq.ft.

Key Plan

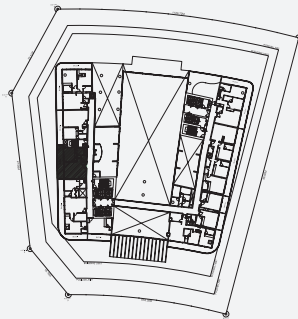


Disclaimer: All images used are for illustrative purposes only and do not represent the actual size, features, specifications, fittings, and furnishings. All materials, dimensions, and drawings are approximate only.

1 Bedroom

Type	2
Total Area	922.90 sq.ft.

Key Plan



Floor Plan



Disclaimer: All images used are for illustrative purposes only and do not represent the actual size, features, specifications, fittings, and furnishings. All materials, dimensions, and drawings are approximate only.



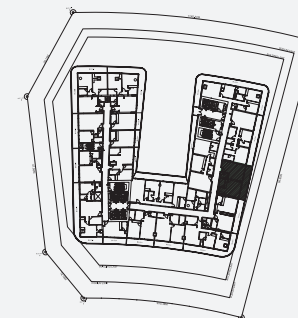
Floor Plan



1 Bedroom

Type	3
Total Area	1,018.91 sq.ft.

Key Plan

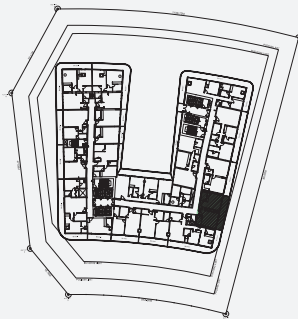


Disclaimer: All images used are for illustrative purposes only and do not represent the actual size, features, specifications, fittings, and furnishings. All materials, dimensions, and drawings are approximate only.

1 Bedroom

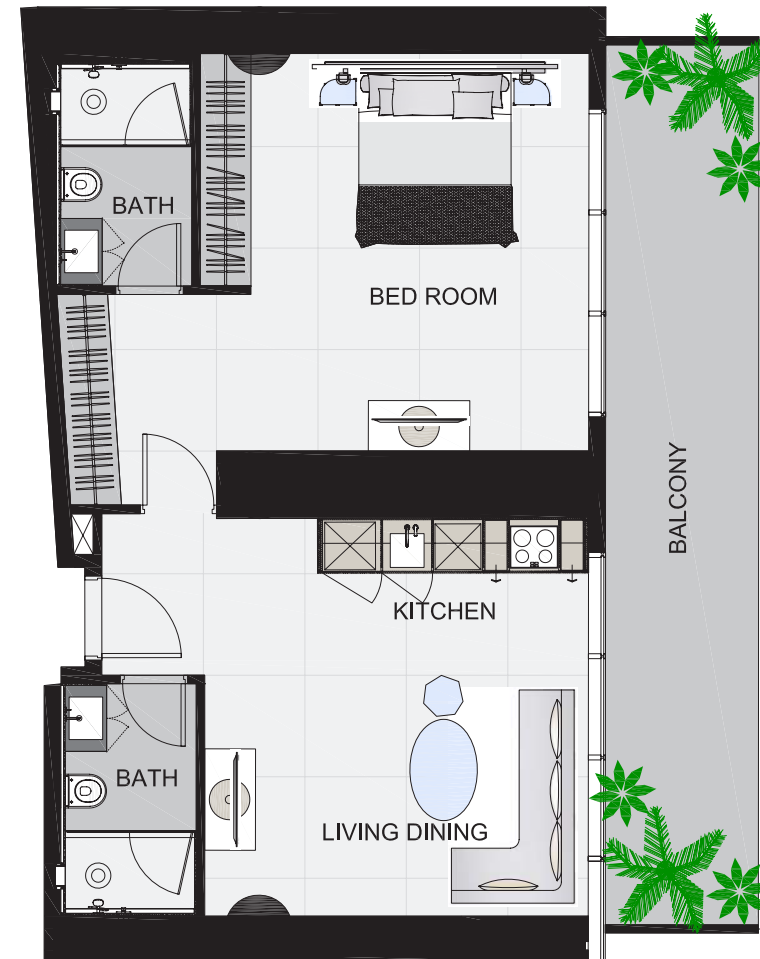
Type	4
Total Area	977.47 sq.ft.

Key Plan



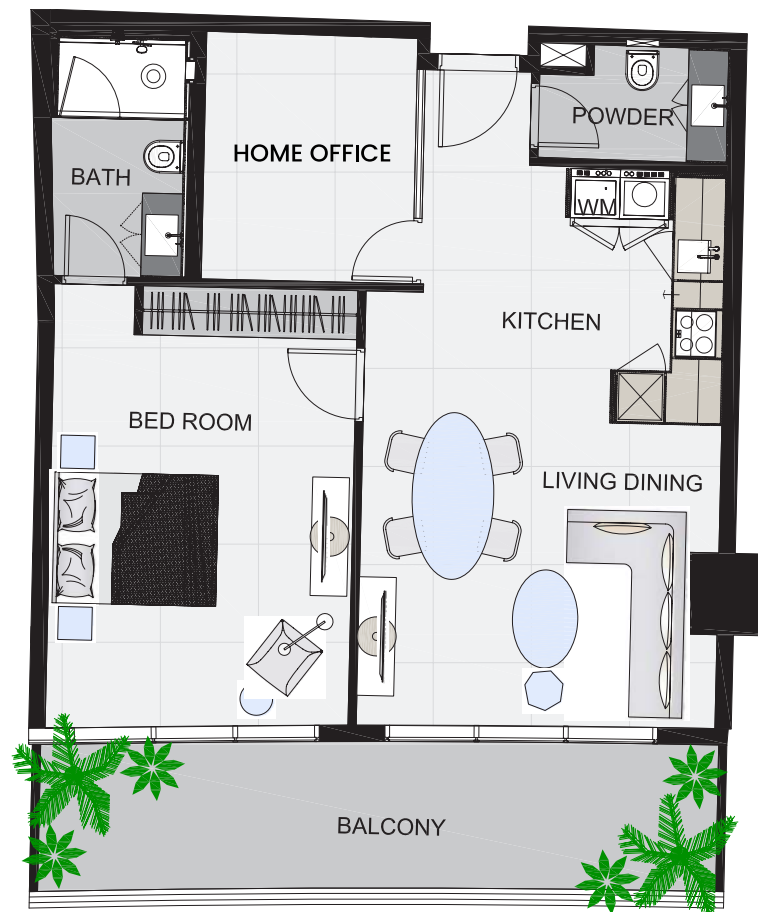
Disclaimer: All images used are for illustrative purposes only and do not represent the actual size, features, specifications, fittings, and furnishings. All materials, dimensions, and drawings are approximate only.

Floor Plan





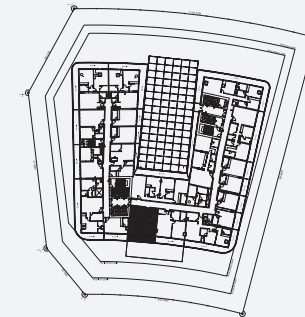
Floor Plan



1 Bedroom + Home Office

Type	1
Total Area	968.97 sq.ft.

Key Plan

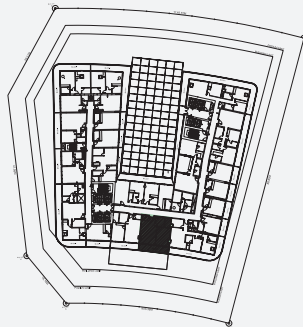


Disclaimer: All images used are for illustrative purposes only and do not represent the actual size, features, specifications, fittings, and furnishings. All materials, dimensions, and drawings are approximate only.

1 Bedroom + Home Office

Type	2
Total Area	1,001.37 sq.ft.

Key Plan



Disclaimer: All images used are for illustrative purposes only and do not represent the actual size, features, specifications, fittings, and furnishings. All materials, dimensions, and drawings are approximate only.

Floor Plan





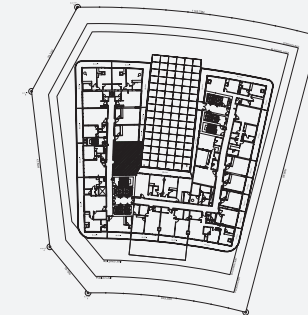
Floor Plan



1 Bedroom + Home Office

Type	3
Total Area	881.03 sq.ft.

Key Plan

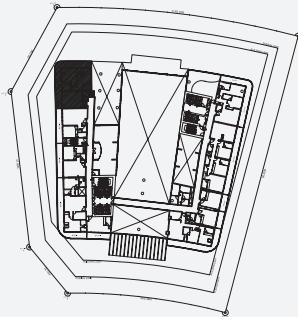


Disclaimer: All images used are for illustrative purposes only and do not represent the actual size, features, specifications, fittings, and furnishings. All materials, dimensions, and drawings are approximate only.

2 Bedroom

Type	1
Total Area	1,634.54 - 1,653.66 sq.ft.

Key Plan



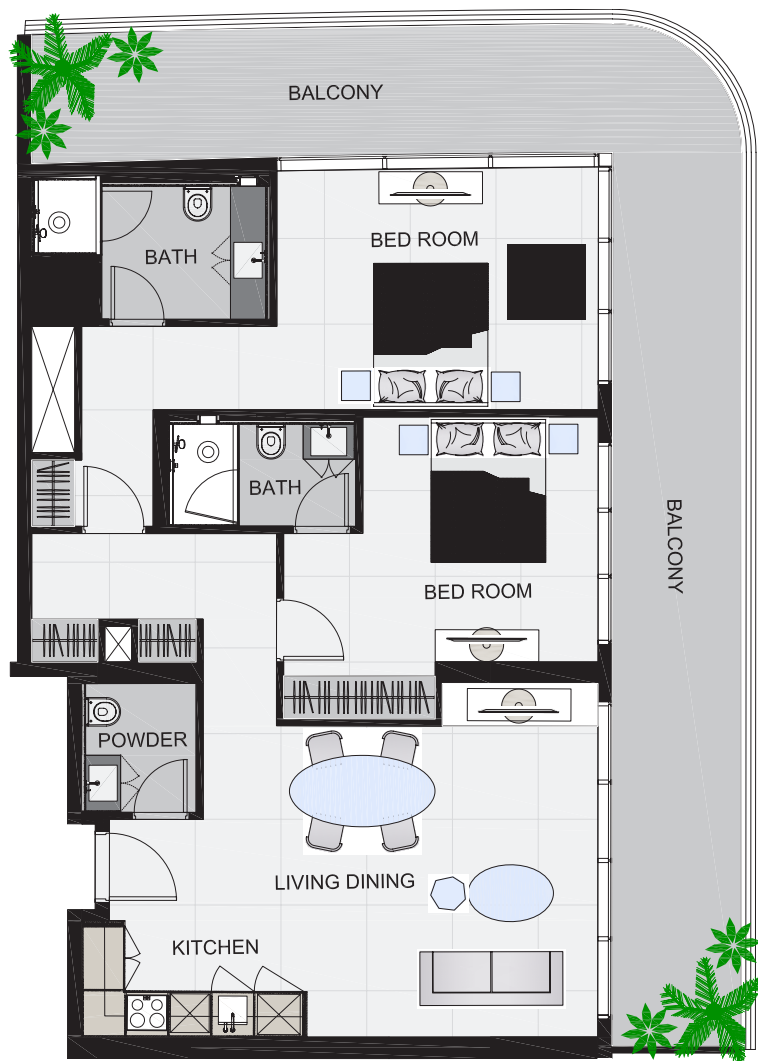
Disclaimer: All images used are for illustrative purposes only and do not represent the actual size, features, specifications, fittings, and furnishings. All materials, dimensions, and drawings are approximate only.

Floor Plan





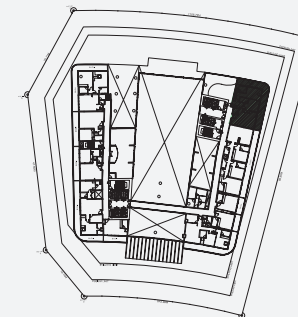
Floor Plan



2 Bedroom

Type	2
Total Area	1,522.99 sq.ft.

Key Plan

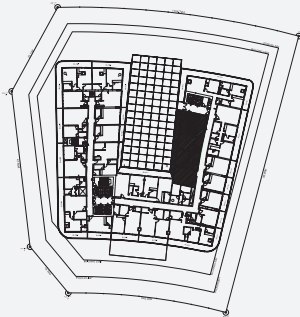


Disclaimer: All images used are for illustrative purposes only and do not represent the actual size, features, specifications, fittings, and furnishings. All materials, dimensions, and drawings are approximate only.

2 Bedroom

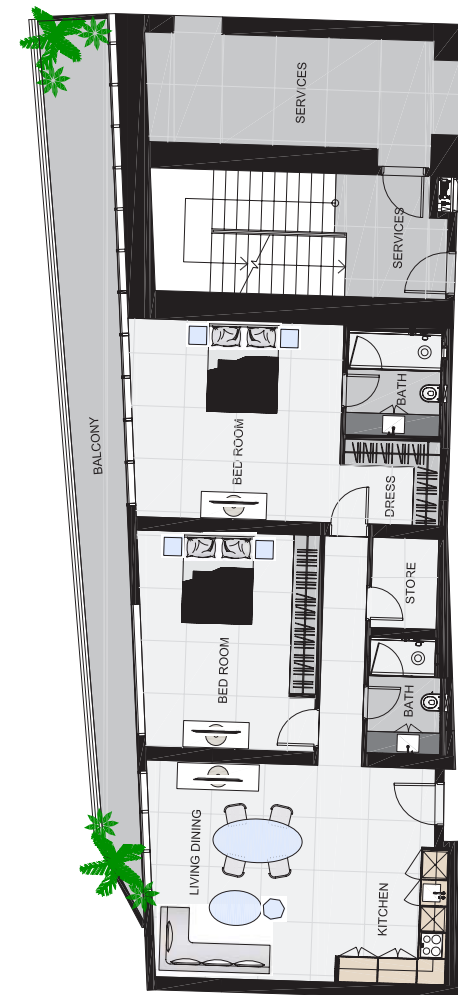
Type	3
Total Area	1,498.66 sq.ft.

Key Plan



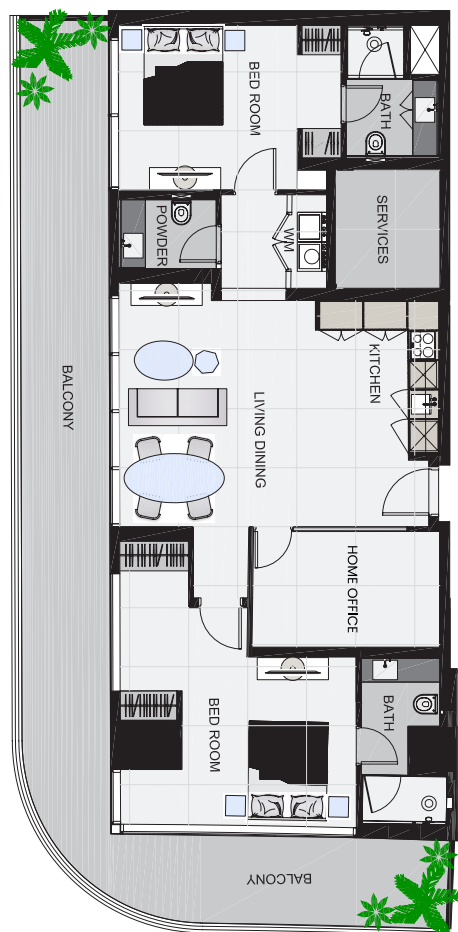
Disclaimer: All images used are for illustrative purposes only and do not represent the actual size, features, specifications, fittings, and furnishings. All materials, dimensions, and drawings are approximate only.

Floor Plan





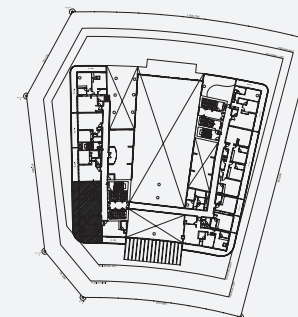
Floor Plan



2 Bedroom + Home Office

Type	1
Total Area	1,662.92 sq.ft.

Key Plan

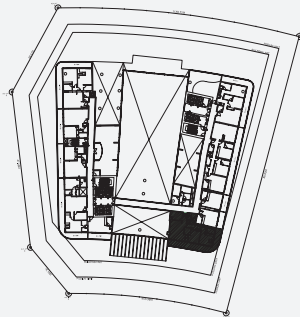


Disclaimer: All images used are for illustrative purposes only and do not represent the actual size, features, specifications, fittings, and furnishings. All materials, dimensions, and drawings are approximate only.

2 Bedroom + Home Office

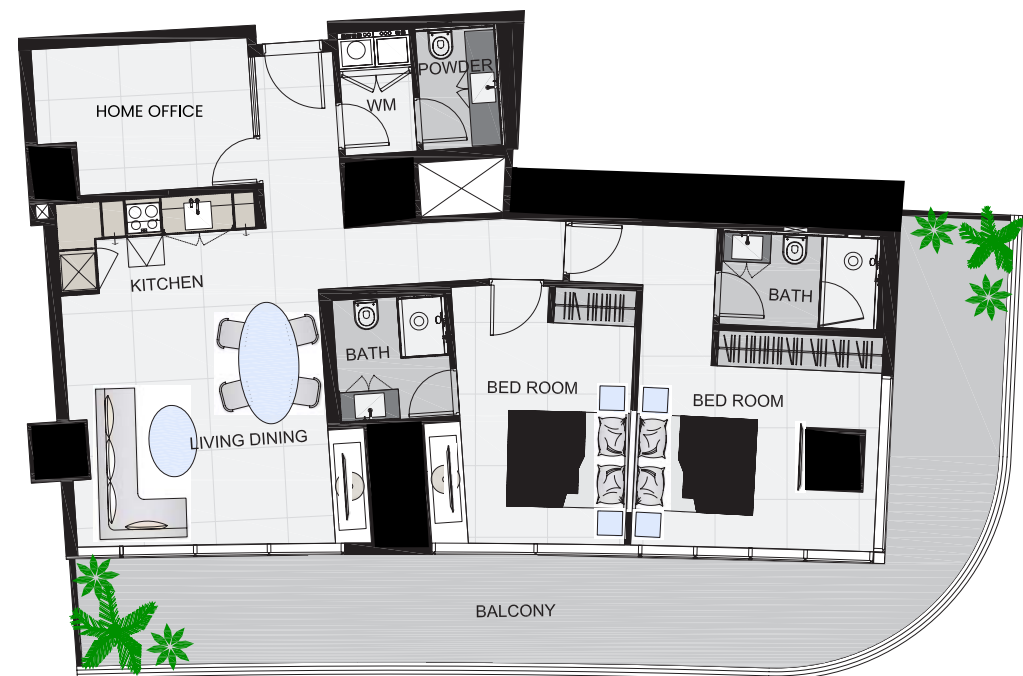
Type	2
Total Area	1,527.40 sq.ft.

Key Plan



Disclaimer: All images used are for illustrative purposes only and do not represent the actual size, features, specifications, fittings, and furnishings. All materials, dimensions, and drawings are approximate only.

Floor Plan





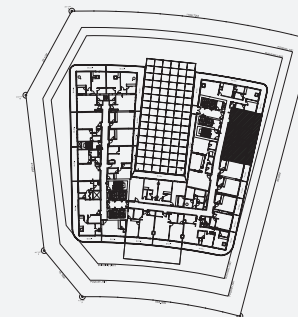
Floor Plan



2 Bedroom + Home Office

Type	3
Total Area	1,596.61 sq.ft.

Key Plan

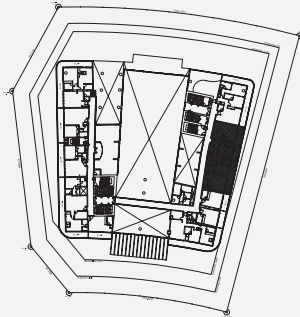


Disclaimer: All images used are for illustrative purposes only and do not represent the actual size, features, specifications, fittings, and furnishings. All materials, dimensions, and drawings are approximate only.

3 Bedroom

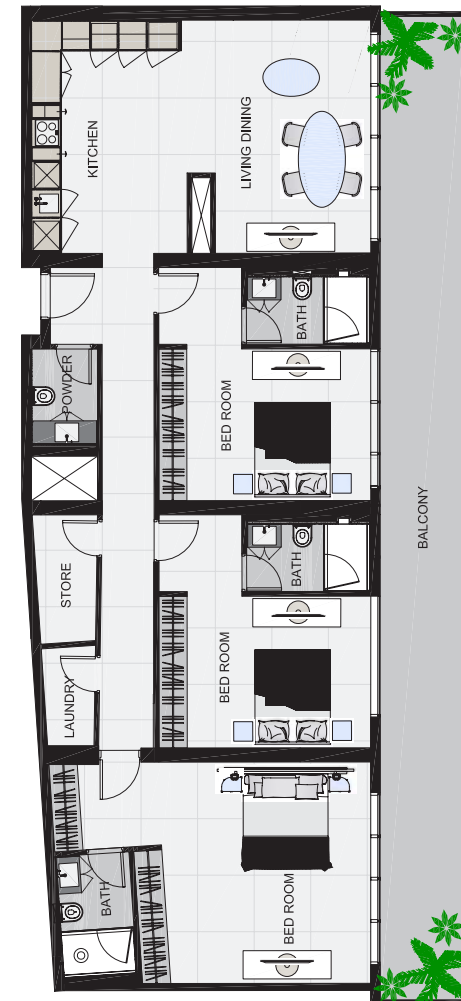
Type	1
Total Area	2,063.44 sq.ft.

Key Plan



Disclaimer: All images used are for illustrative purposes only and do not represent the actual size, features, specifications, fittings, and furnishings. All materials, dimensions, and drawings are approximate only.

Floor Plan





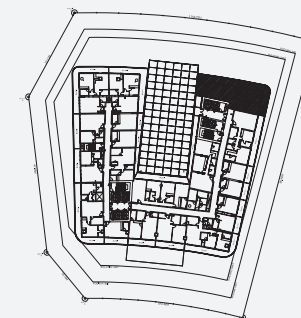
Floor Plan



3 Bedroom

Type	2
Total Area	2,052.14 - 2,062.15 sq.ft.

Key Plan

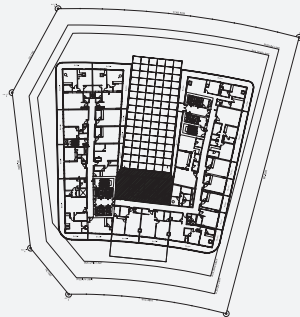


Disclaimer: All images used are for illustrative purposes only and do not represent the actual size, features, specifications, fittings, and furnishings. All materials, dimensions, and drawings are approximate only.

3 Bedroom

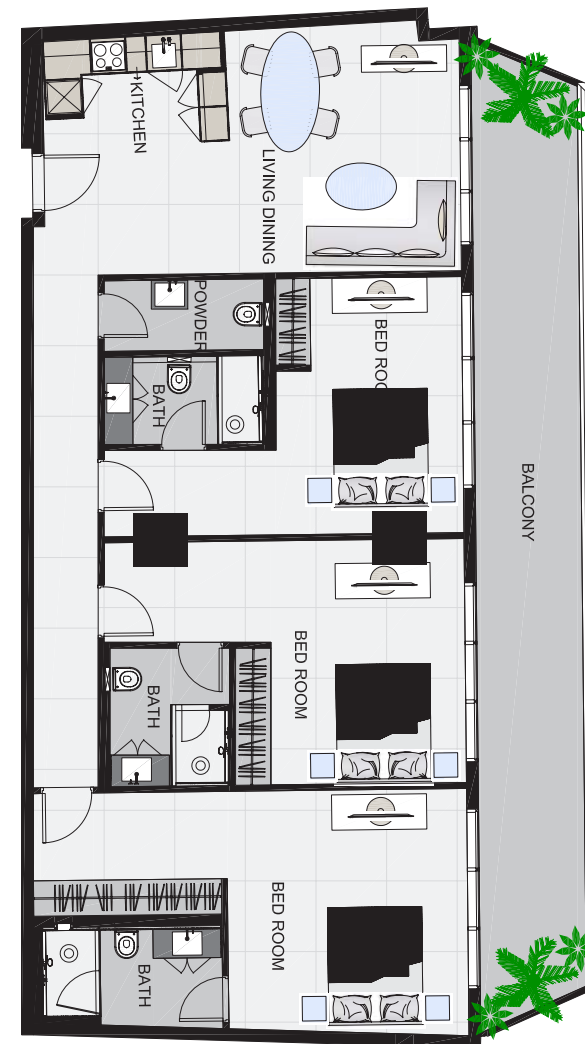
Type	3
Total Area	1,765.17 sq.ft.

Key Plan



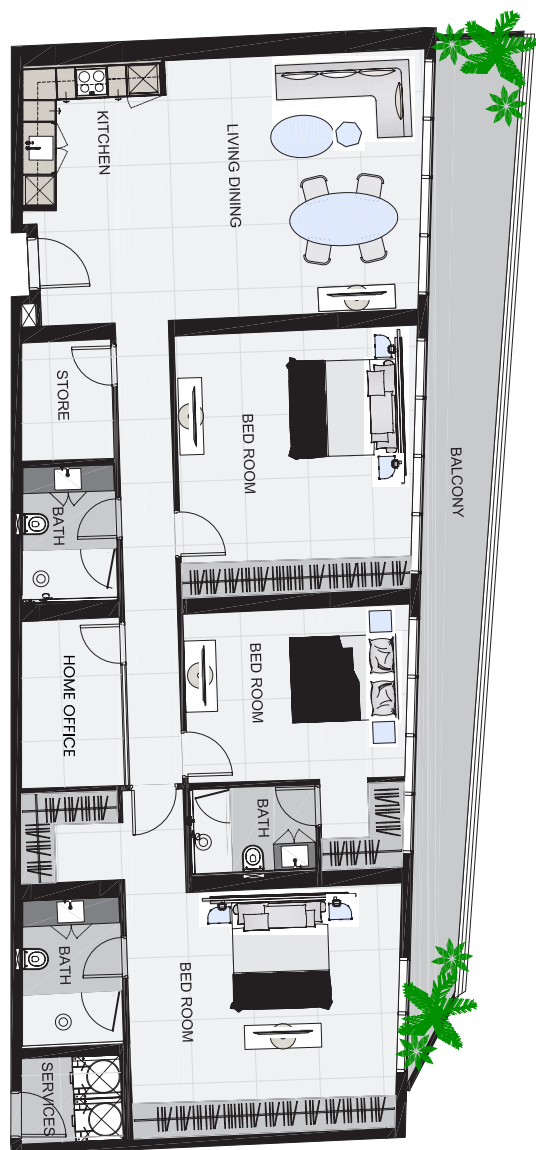
Disclaimer: All images used are for illustrative purposes only and do not represent the actual size, features, specifications, fittings, and furnishings. All materials, dimensions, and drawings are approximate only.

Floor Plan





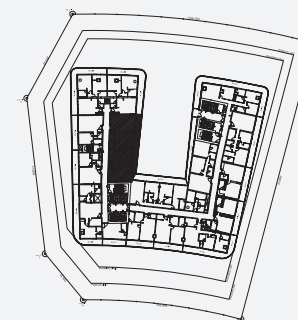
Floor Plan



3 Bedroom + Home Office

Type	1
Total Area	1,946.12 sq.ft.

Key Plan



Disclaimer: All images used are for illustrative purposes only and do not represent the actual size, features, specifications, fittings, and furnishings. All materials, dimensions, and drawings are approximate only.