

## APARTMENT PLANS

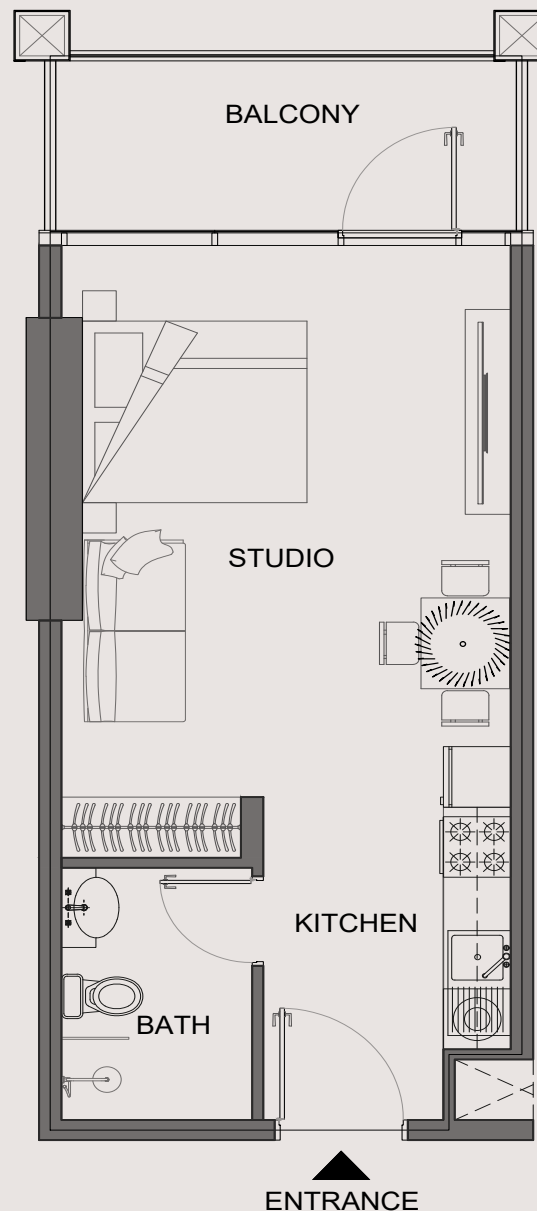
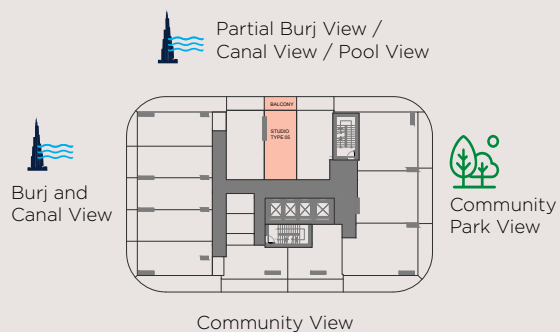
### STUDIO - TYPE A

Apartment Area 398.02 sq.ft.

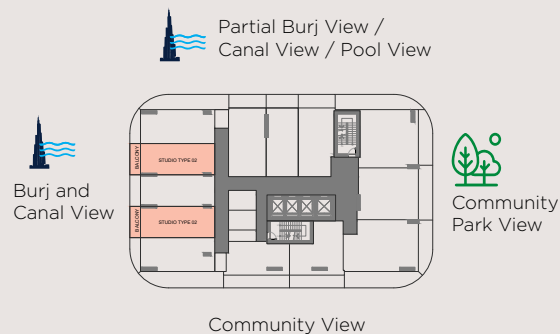
Balcony Area 78.83 sq.ft.

**Total 476.85 sq.ft.**

## TYPICAL FLOOR PLATE (2-15<sup>TH</sup>)



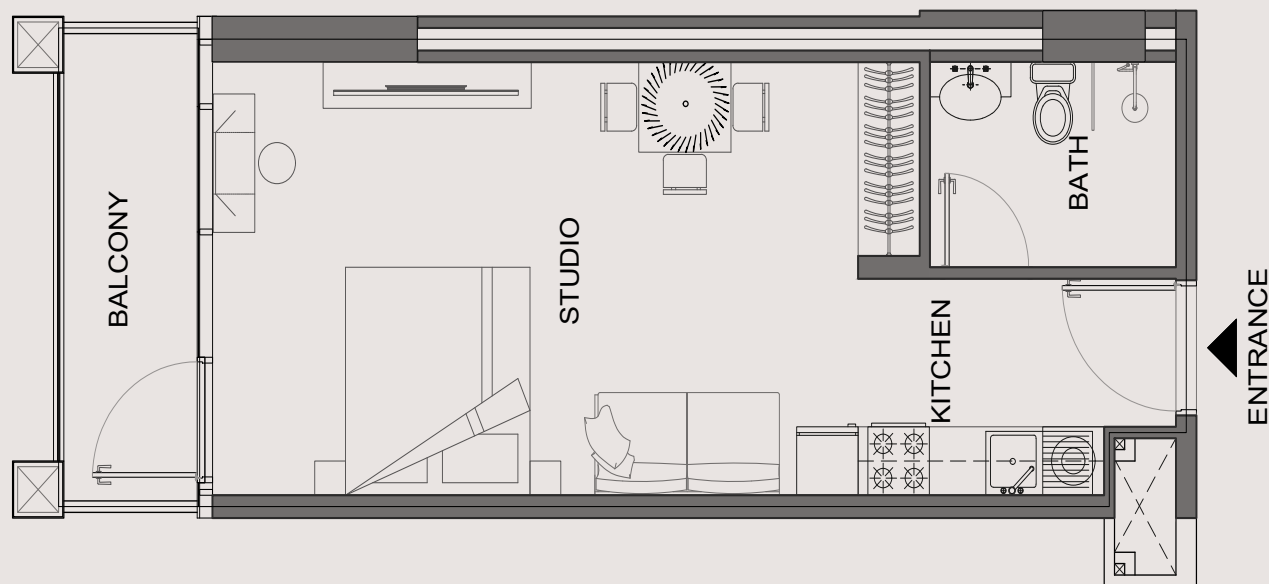
## TYPICAL FLOOR PLATE (2-15<sup>TH</sup>)



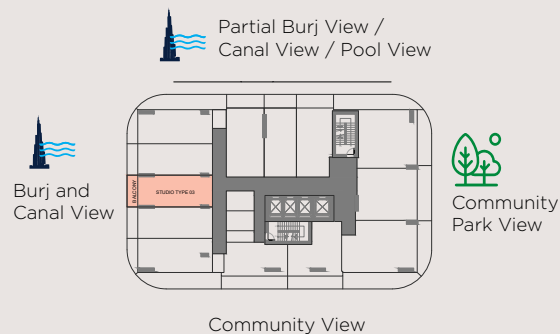
## APARTMENT PLANS

### STUDIO - TYPE B

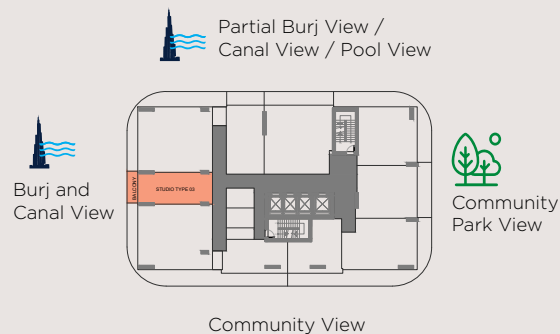
Apartment Area	418.81 to 420.96 sq.ft.
Balcony Area	58.69 to 61.71 sq.ft.
<b>Total</b>	<b>477.50 to 482.67 sq.ft.</b>



## TYPICAL FLOOR PLATE (2-15<sup>TH</sup>)



## TYPICAL FLOOR PLATE (16-19<sup>TH</sup>)



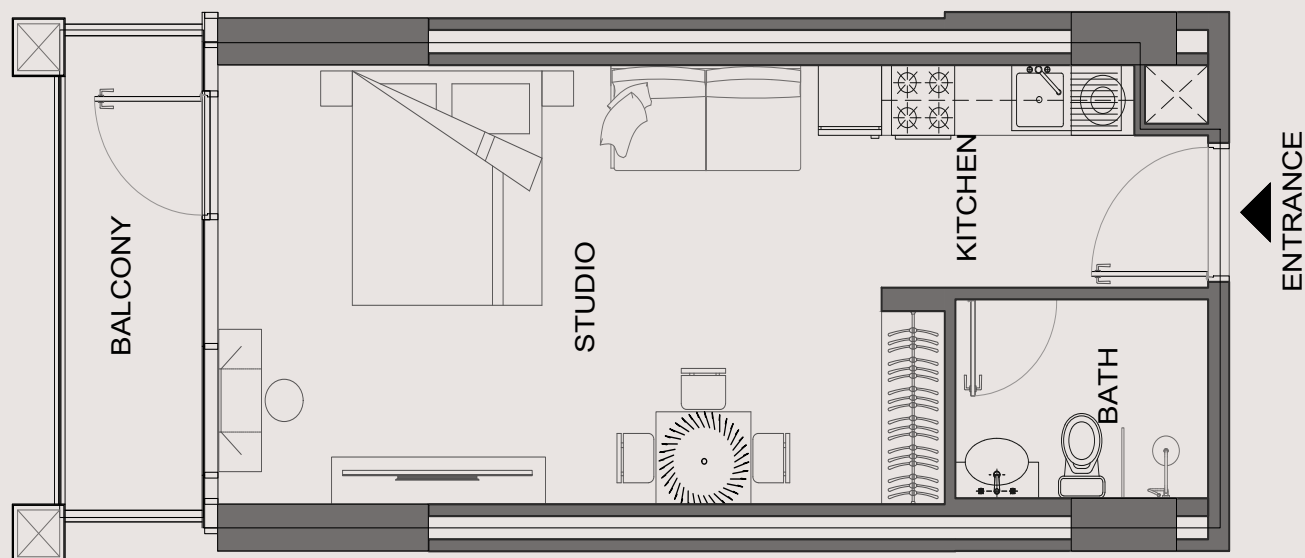
## APARTMENT PLANS

### STUDIO - TYPE C

Apartment Area 424.41 to 424.62 sq.ft.

Balcony Area 60.84 to 60.95 sq.ft.

**Total 485.25 to 485.57 sq.ft.**

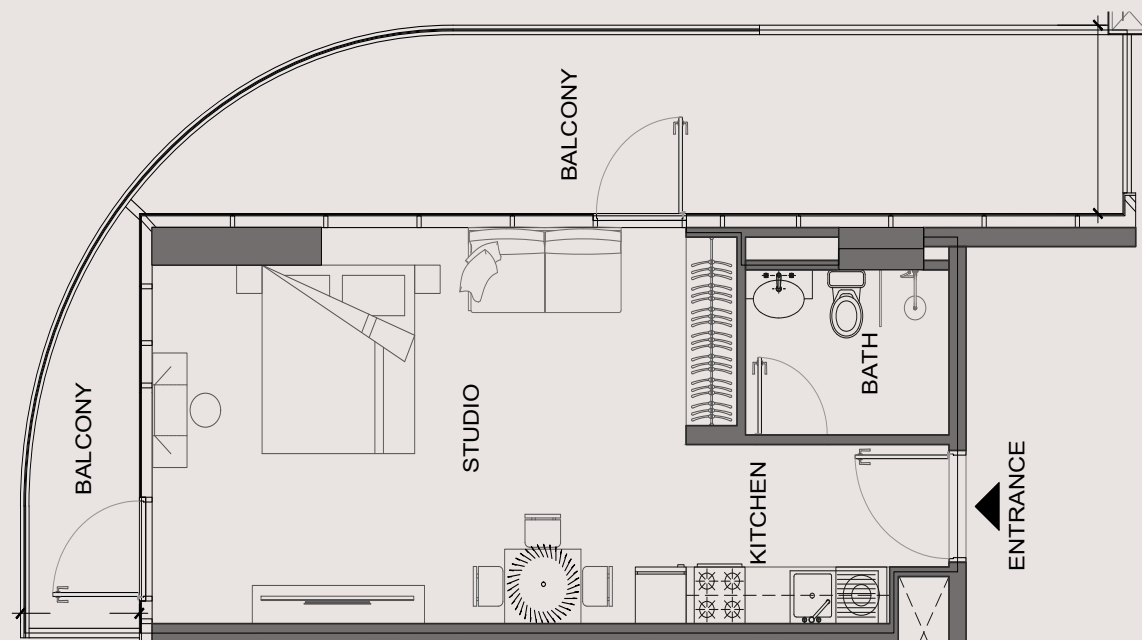
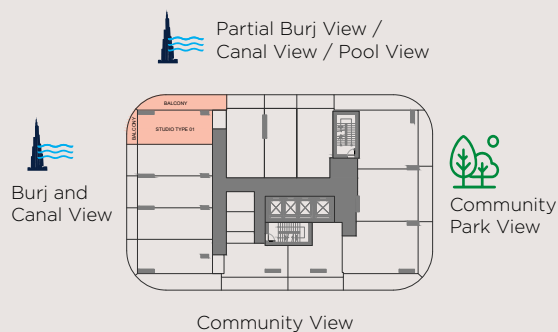


## APARTMENT PLANS

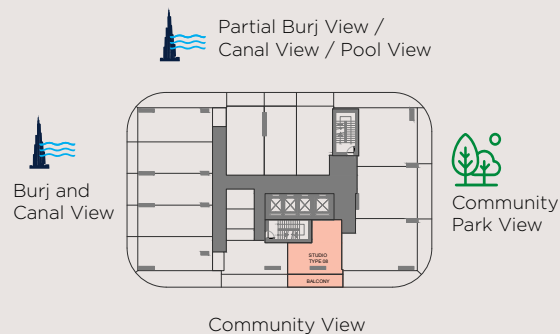
### STUDIO - TYPE D

Apartment Area	455.21 sq.ft.
Balcony Area	280.42 sq.ft.
<b>Total</b>	<b>735.63 sq.ft.</b>

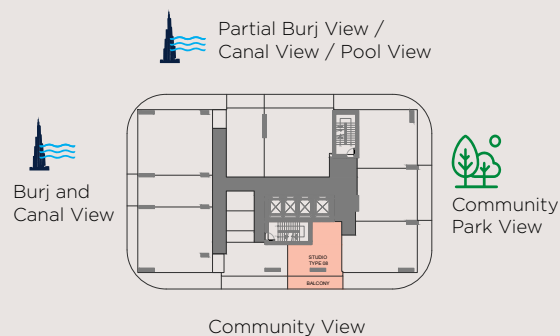
#### TYPICAL FLOOR PLATE (2-15<sup>TH</sup>)



## TYPICAL FLOOR PLATE (2-15<sup>TH</sup>)



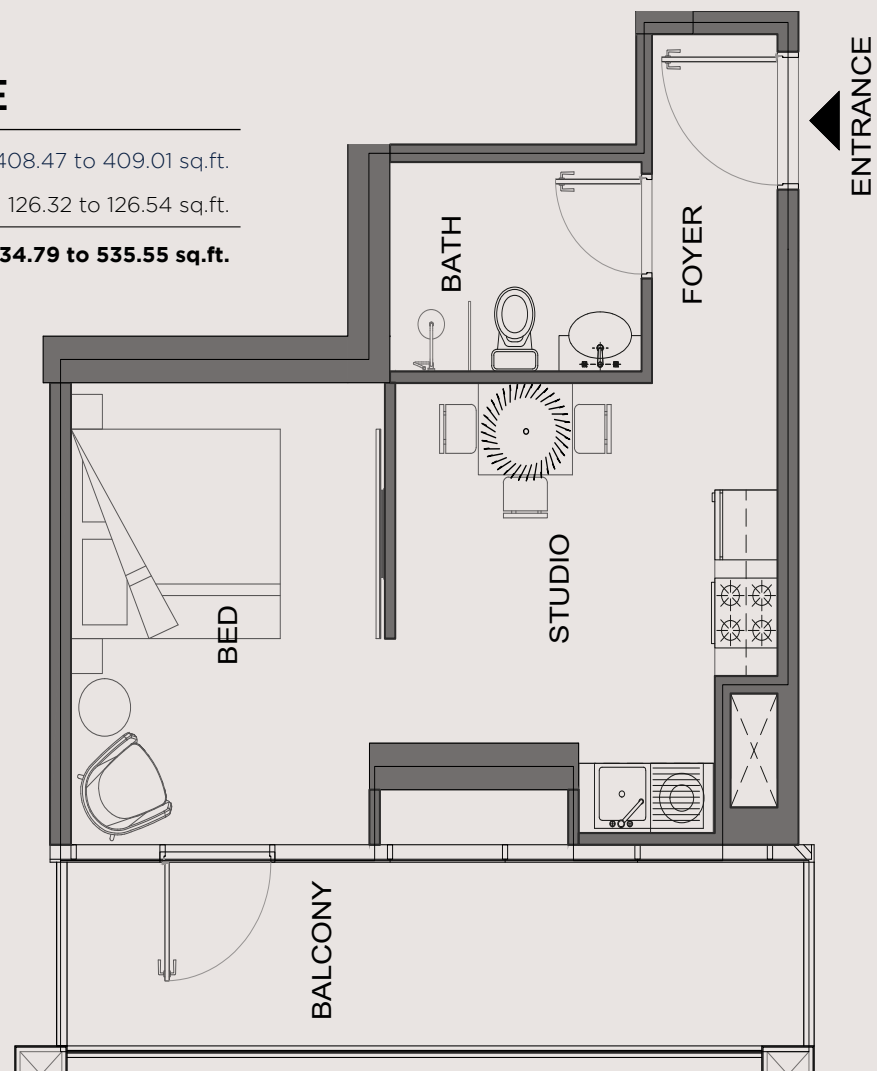
## TYPICAL FLOOR PLATE (16-19<sup>TH</sup>)



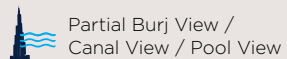
## APARTMENT PLANS

### STUDIO - TYPE E

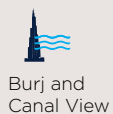
Apartment Area	408.47 to 409.01 sq.ft.
Balcony Area	126.32 to 126.54 sq.ft.
<b>Total</b>	<b>534.79 to 535.55 sq.ft.</b>



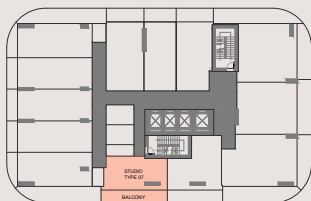
## TYPICAL FLOOR PLATE (2-15<sup>TH</sup>)



Partial Burj View /  
Canal View / Pool View



Burj and  
Canal View

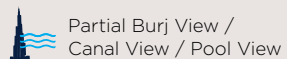


Community View

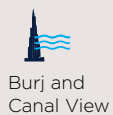


Community  
Park View

## TYPICAL FLOOR PLATE (16-19<sup>TH</sup>)



Partial Burj View /  
Canal View / Pool View



Burj and  
Canal View



Community View



Community  
Park View

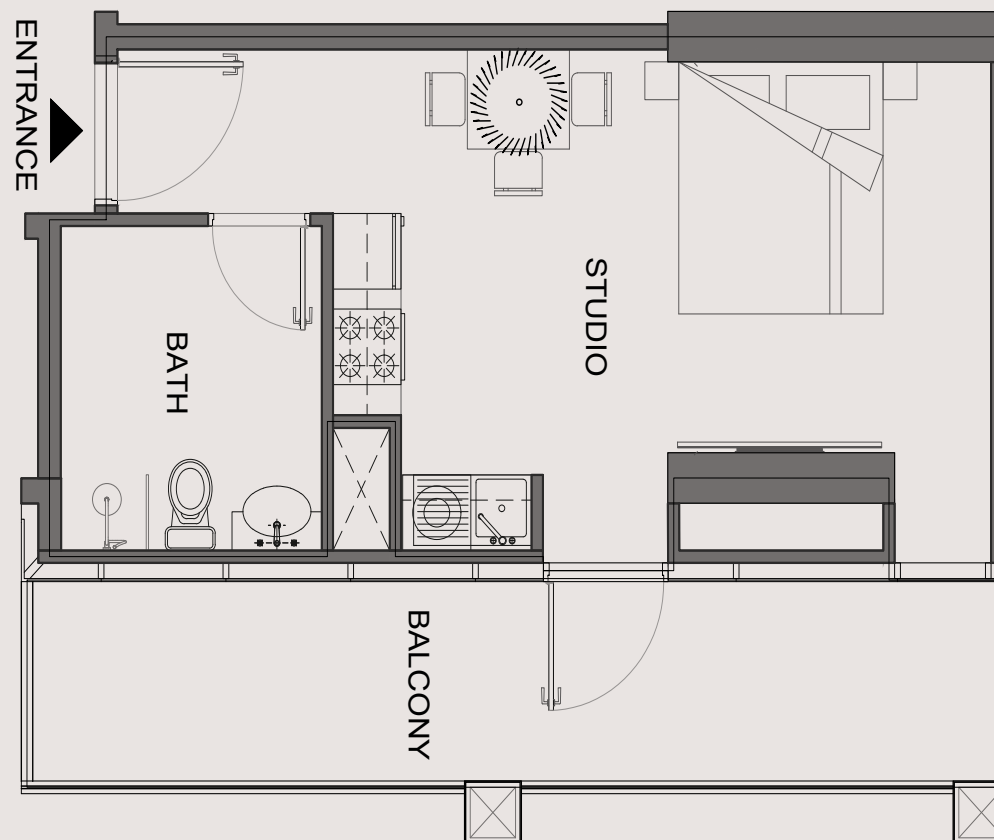
## APARTMENT PLANS

### STUDIO - TYPE F

Apartment Area 376.48 to 377.13 sq.ft.

Balcony Area 152.17 to 152.38 sq.ft.

**Total 528.65 to 529.51 sq.ft.**

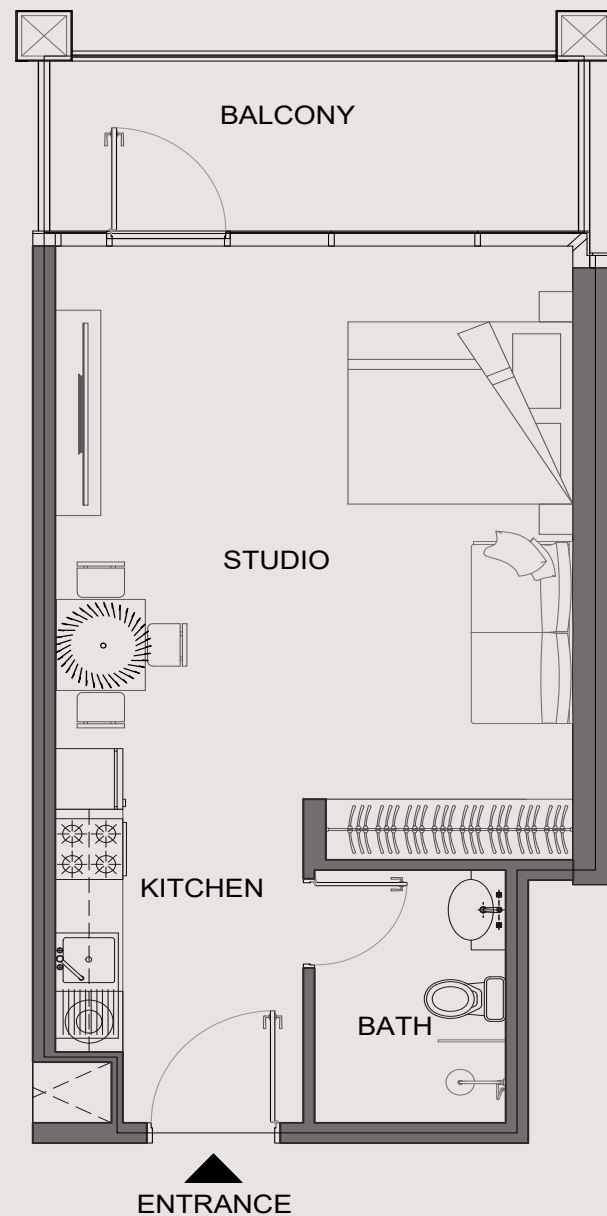
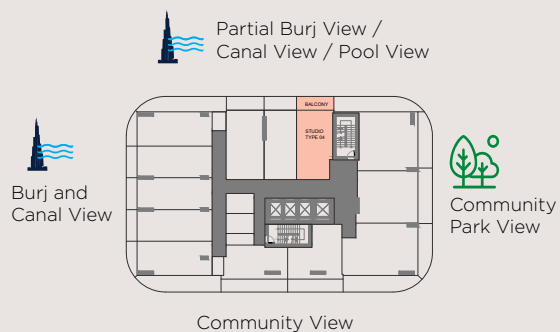


## APARTMENT PLANS

### STUDIO - TYPE G

Apartment Area	445.65 sq.ft.
Balcony Area	90.03 sq.ft.
<b>Total</b>	<b>534.68 sq.ft.</b>

## TYPICAL FLOOR PLATE (2-15<sup>TH</sup>)



## APARTMENT PLANS

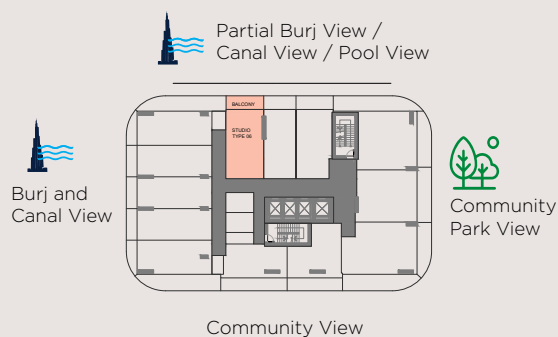
### STUDIO - TYPE H

Apartment Area 458.65 sq.ft.

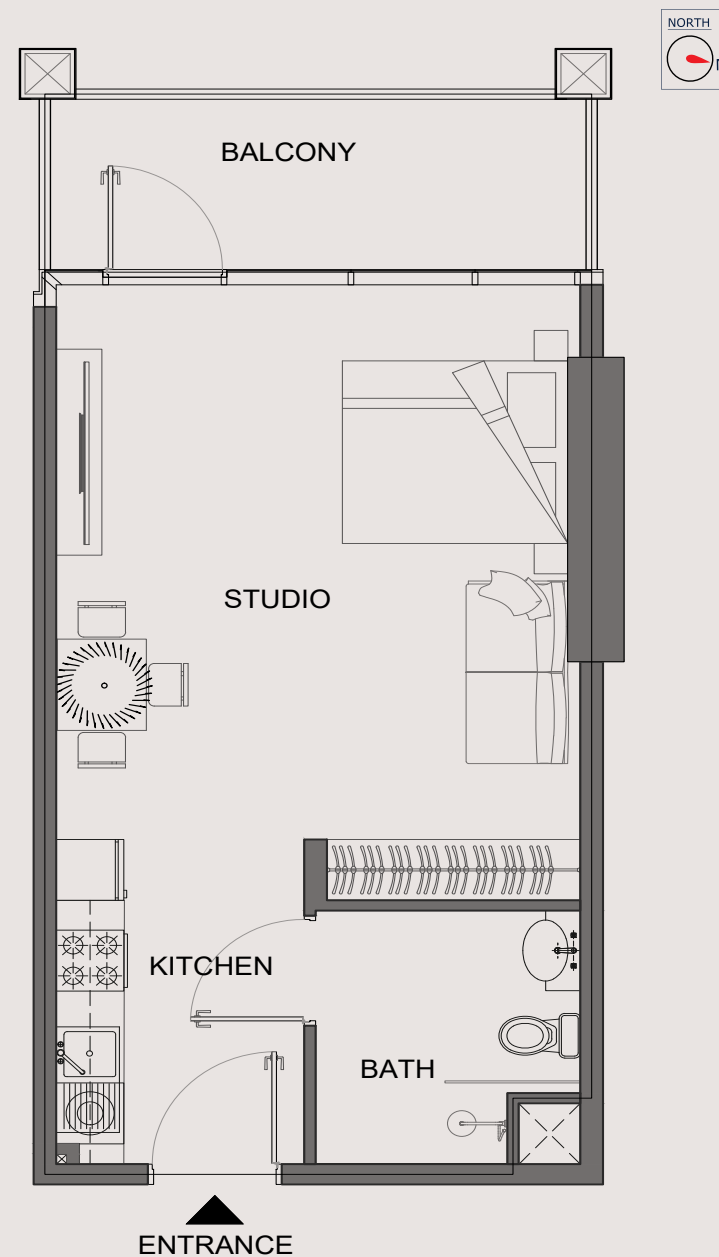
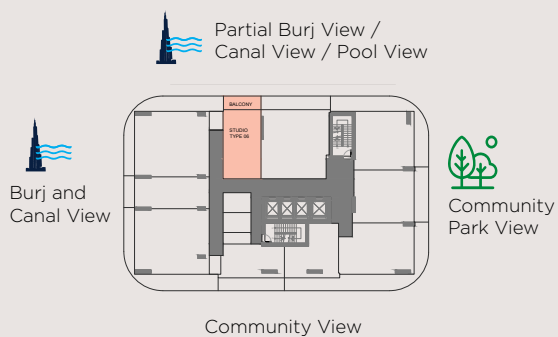
Balcony Area 90.89 sq.ft.

**Total 549.54 sq.ft.**

#### TYPICAL FLOOR PLATE (2-15<sup>TH</sup>)



#### TYPICAL FLOOR PLATE (16-19<sup>TH</sup>)



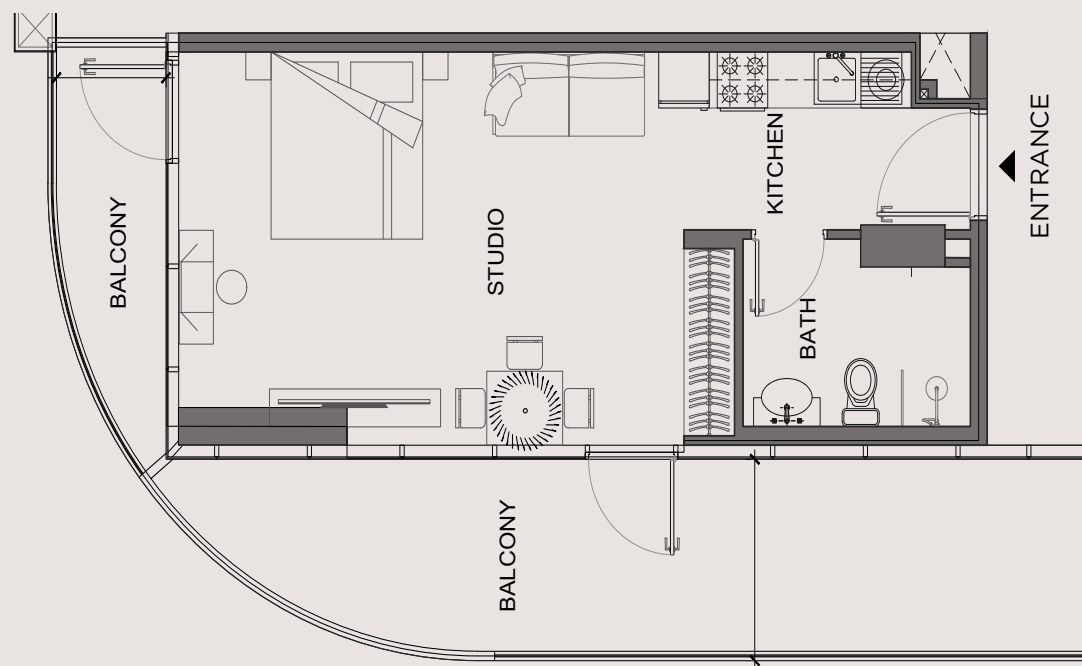
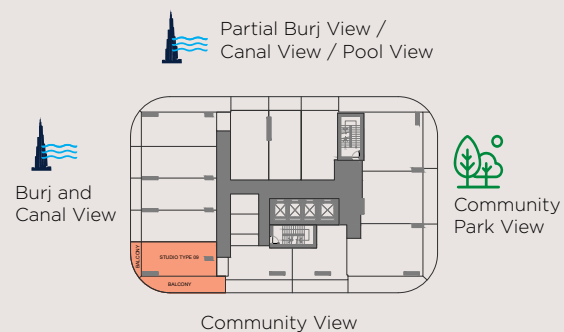


## APARTMENT PLANS

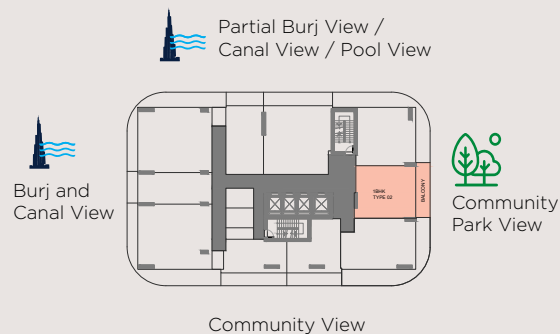
### STUDIO - TYPE I

Apartment Area	455.21 sq.ft.
Balcony Area	285.81 sq.ft.
<b>Total</b>	<b>741.02 sq.ft.</b>

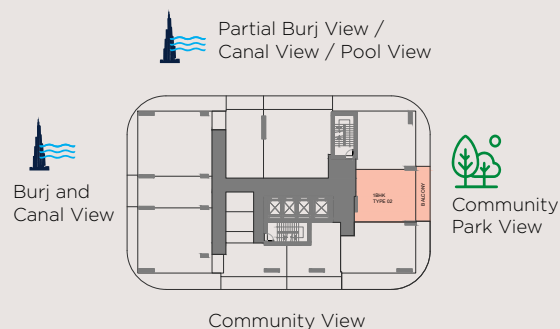
## TYPICAL FLOOR PLATE (2-15<sup>TH</sup>)



## TYPICAL FLOOR PLATE (2-15<sup>TH</sup>)



## TYPICAL FLOOR PLATE (16-19<sup>TH</sup>)



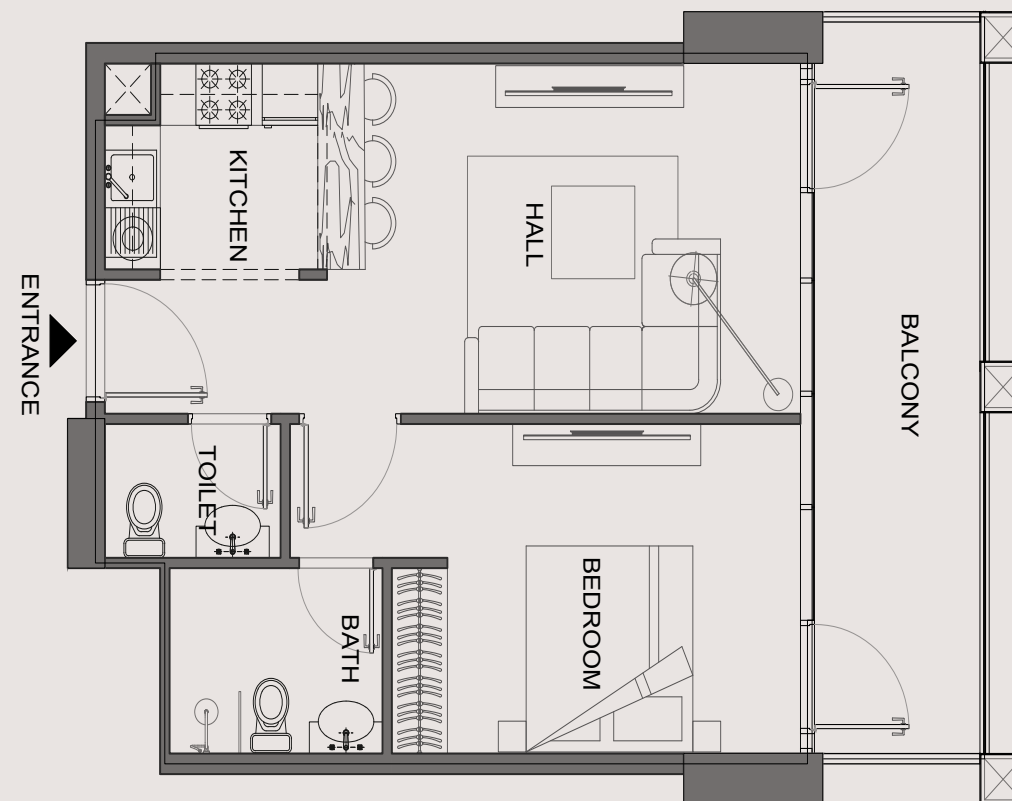
## APARTMENT PLANS

### 1 BEDROOM - TYPE A

Apartment Area 556.97 sq.ft.

Balcony Area 143.44 to 143.66 sq.ft.

**Total 700.41 to 700.63 sq.ft.**



## APARTMENT PLANS

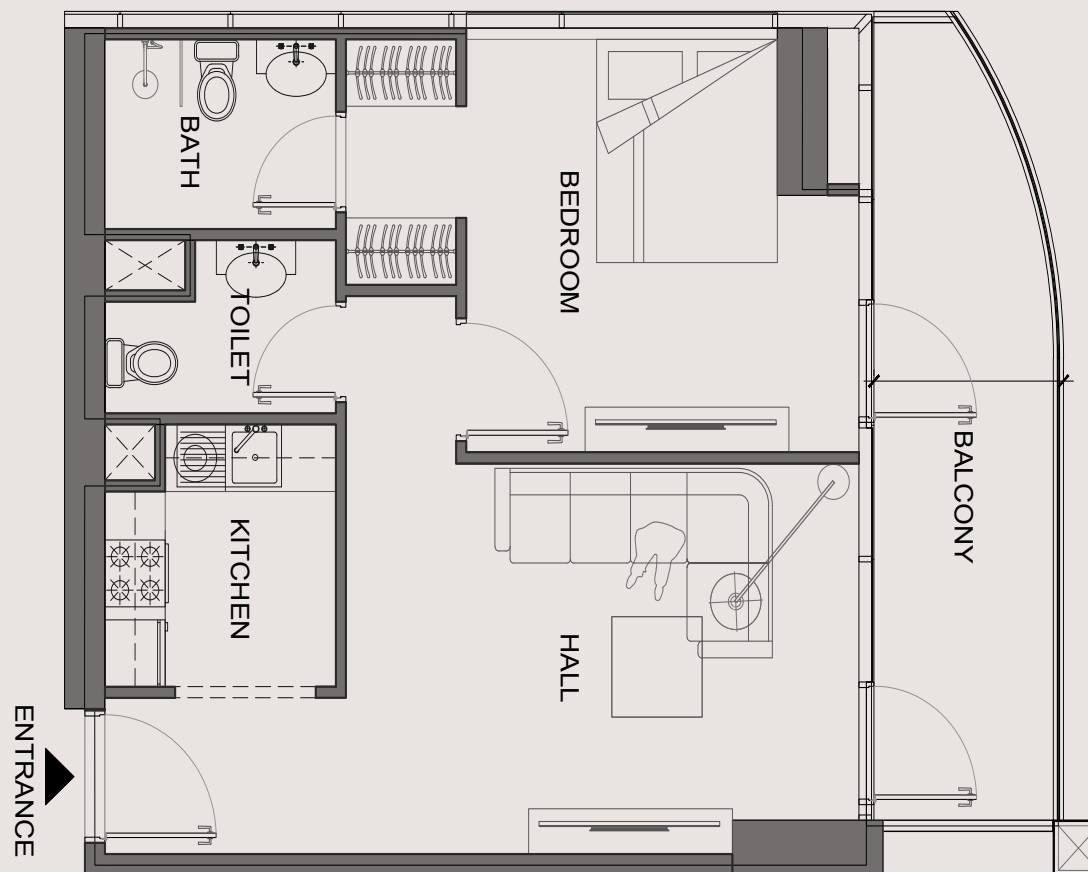
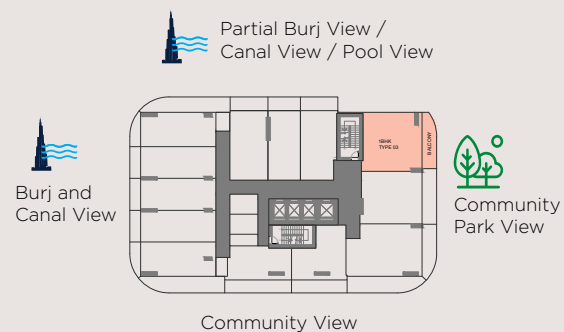
### 1 BEDROOM - TYPE B

Apartment Area 628.26 sq.ft.

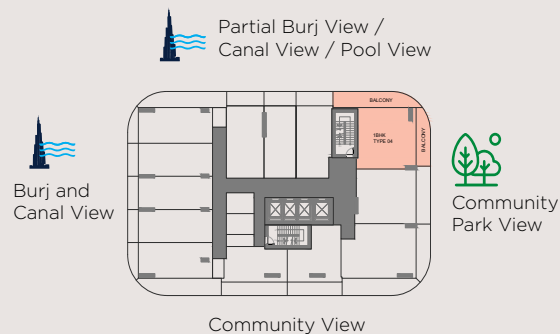
Balcony Area 133.64 sq.ft.

**Total 761.9 sq.ft.**

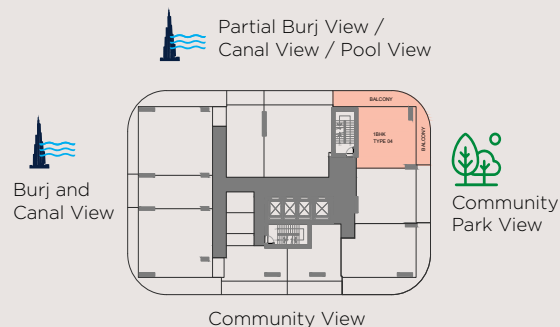
## TYPICAL FLOOR PLATE (2<sup>ND</sup>)



## TYPICAL FLOOR PLATE (3-15<sup>TH</sup>)



## TYPICAL FLOOR PLATE (16-19<sup>TH</sup>)



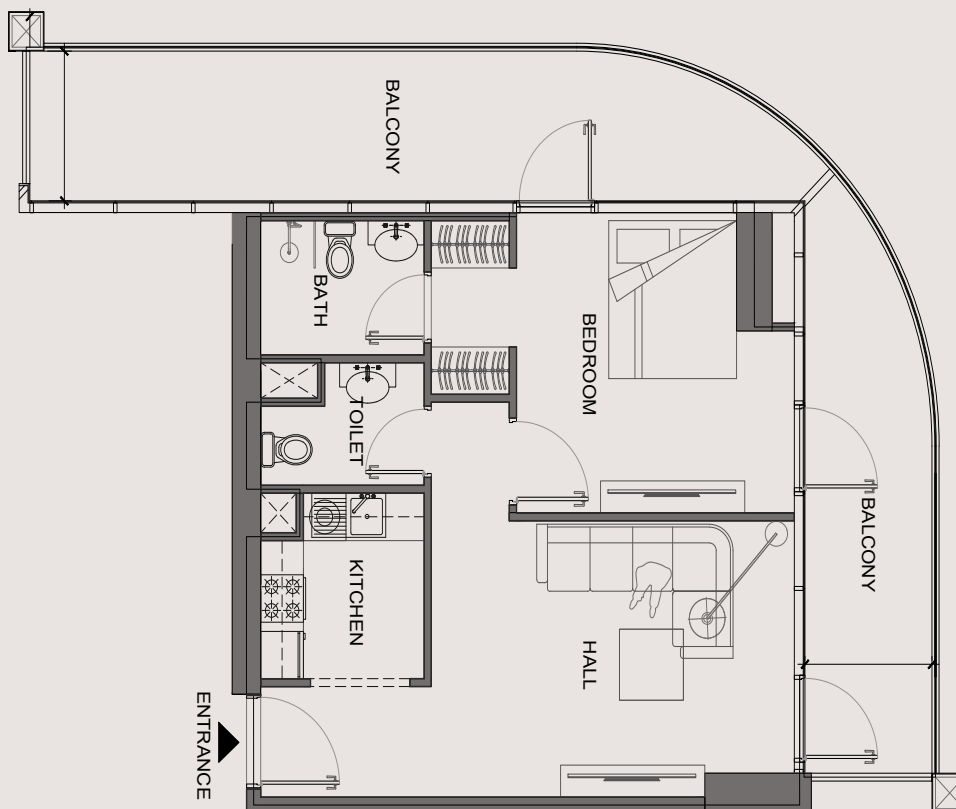
## APARTMENT PLANS

### 1 BEDROOM - TYPE B

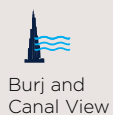
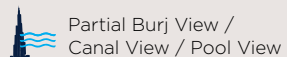
Apartment Area 628.26 to 628.37 sq.ft.

Balcony Area 356.13 sq.ft.

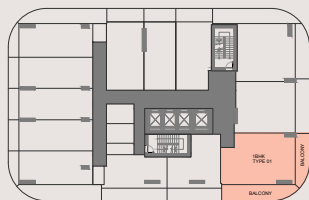
**Total 984.39 to 984.5 sq.ft.**



## TYPICAL FLOOR PLATE (2-15<sup>TH</sup>)



Burj and  
Canal View

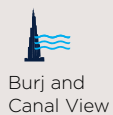
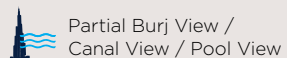


Community View

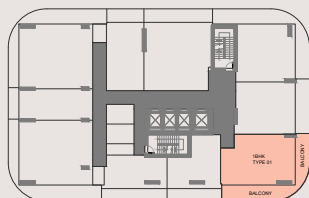


Community  
Park View

## TYPICAL FLOOR PLATE (16-19<sup>TH</sup>)



Burj and  
Canal View



Community View



Community  
Park View

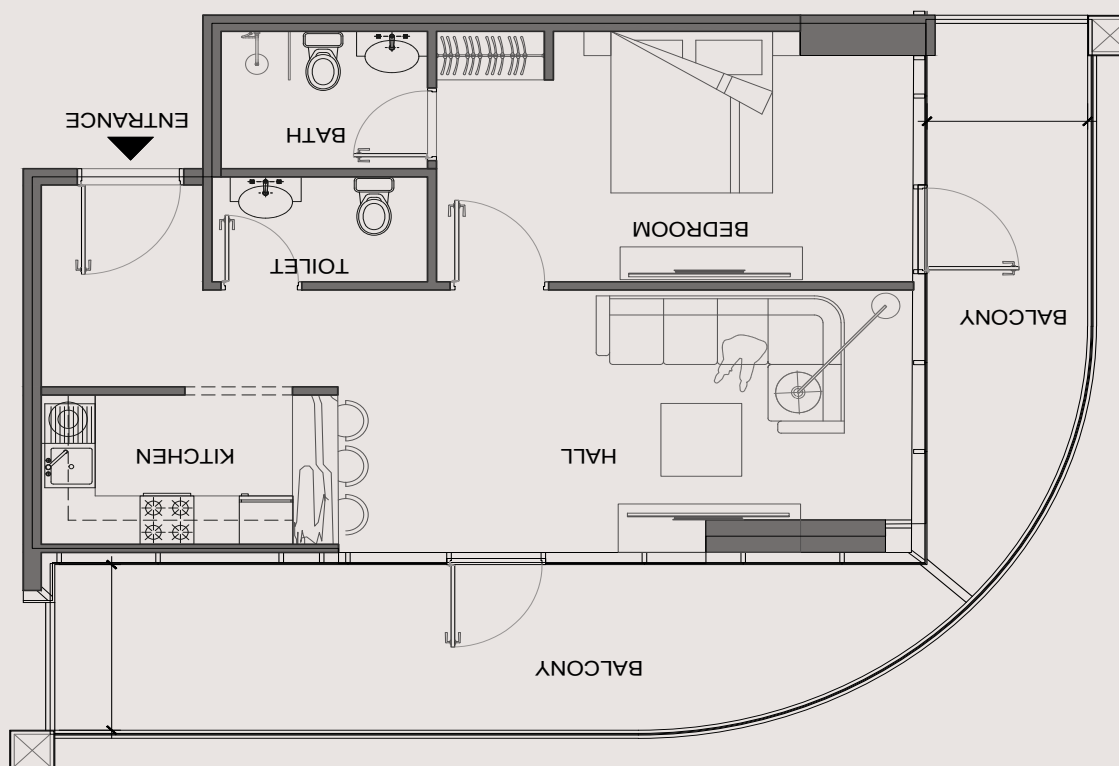
## APARTMENT PLANS

### 1 BEDROOM - TYPE C

Apartment Area 675.54 sq.ft.

Balcony Area 338.9 to 339.22 sq.ft.

**Total 1014.44 to 1014.76 sq.ft.**



## APARTMENT PLANS

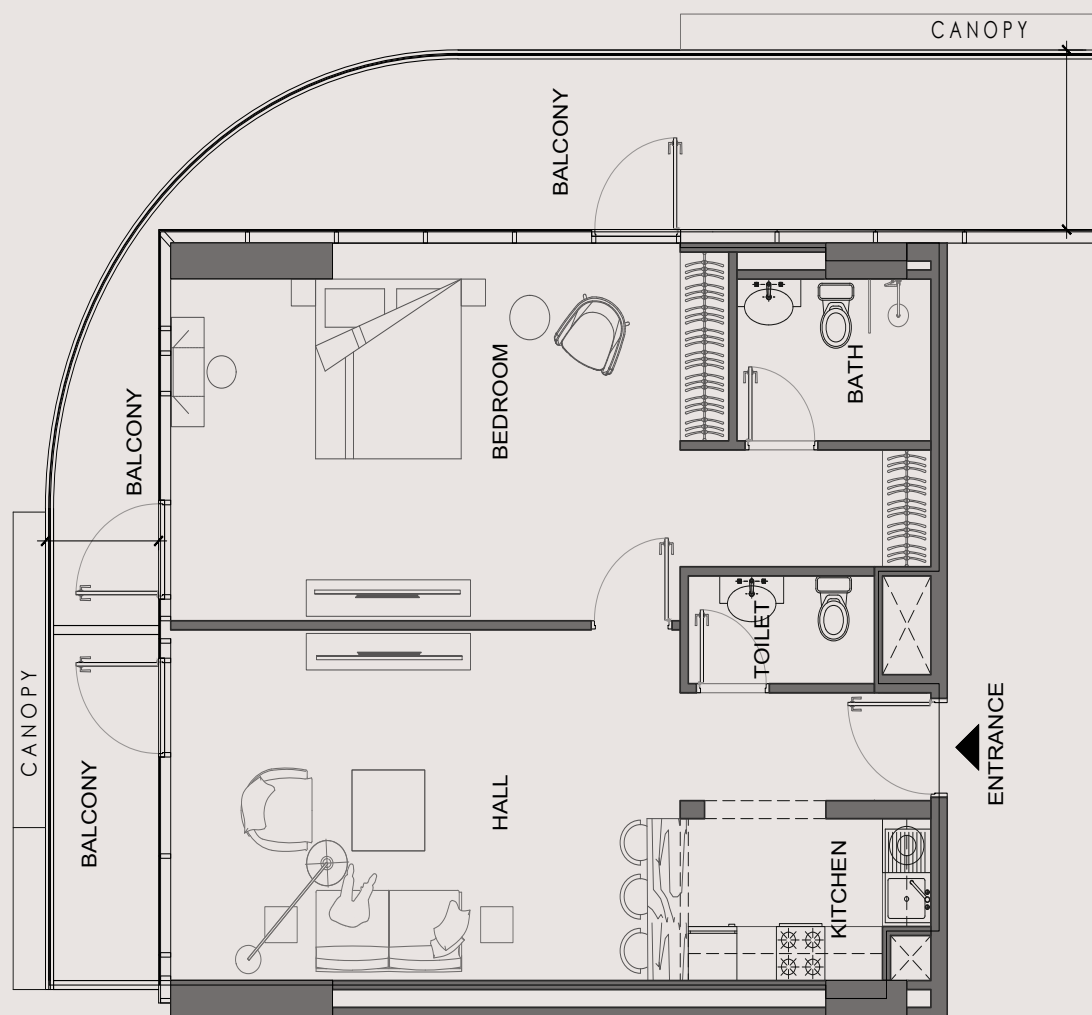
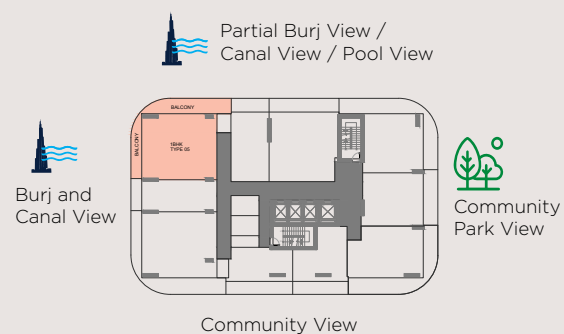
### 1 BEDROOM - TYPE D

Apartment Area 870.57 sq.ft.

Balcony Area 338.15 sq.ft.

**Total 1208.72 sq.ft.**

## TYPICAL FLOOR PLATE (16-19<sup>TH</sup>)



## APARTMENT PLANS

### 1 BEDROOM - TYPE E

Apartment Area 839.44 sq.ft.

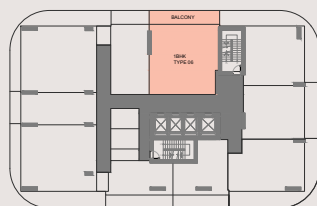
Balcony Area 168.96 sq.ft.

**Total 1008.43 sq.ft.**

## TYPICAL FLOOR PLATE (16-19<sup>TH</sup>)

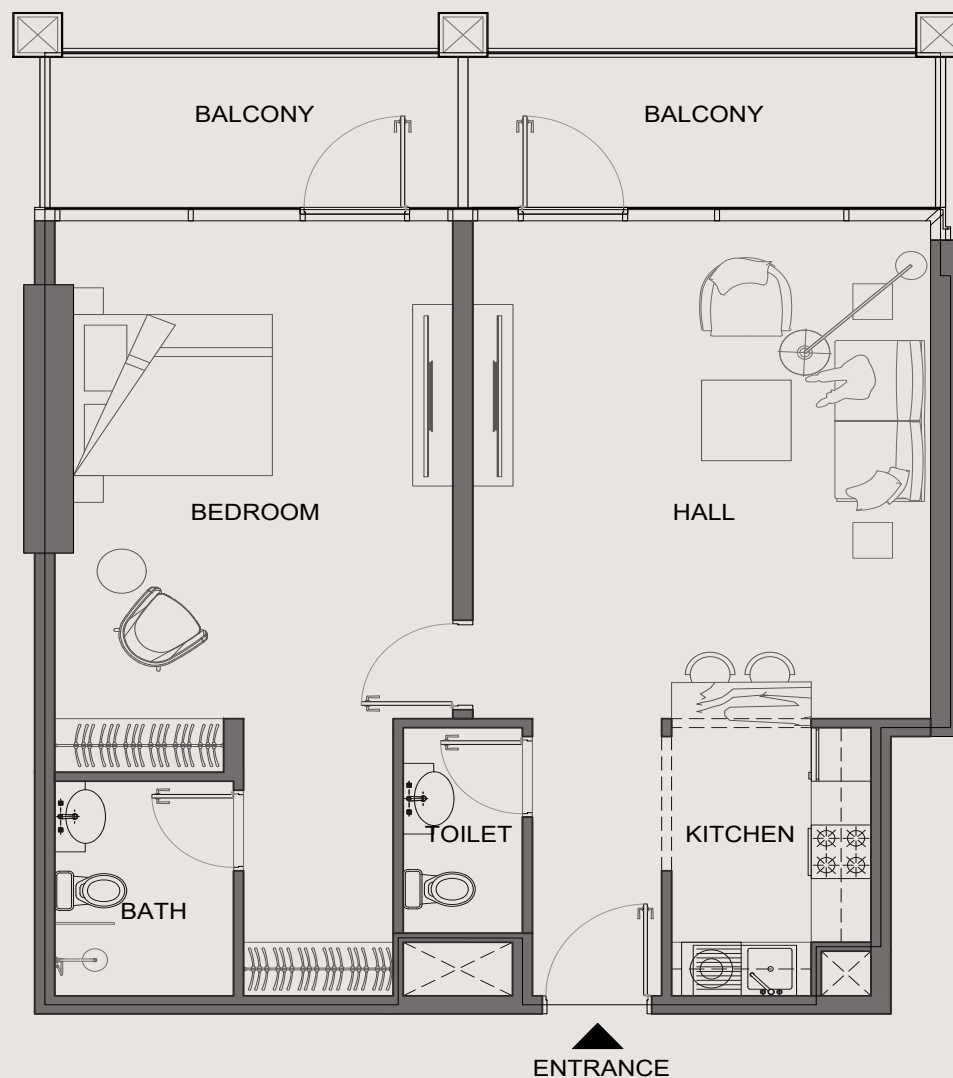
Partial Burj View /  
Canal View / Pool View

Burj and  
Canal View



Community View

Community  
Park View



## APARTMENT PLANS

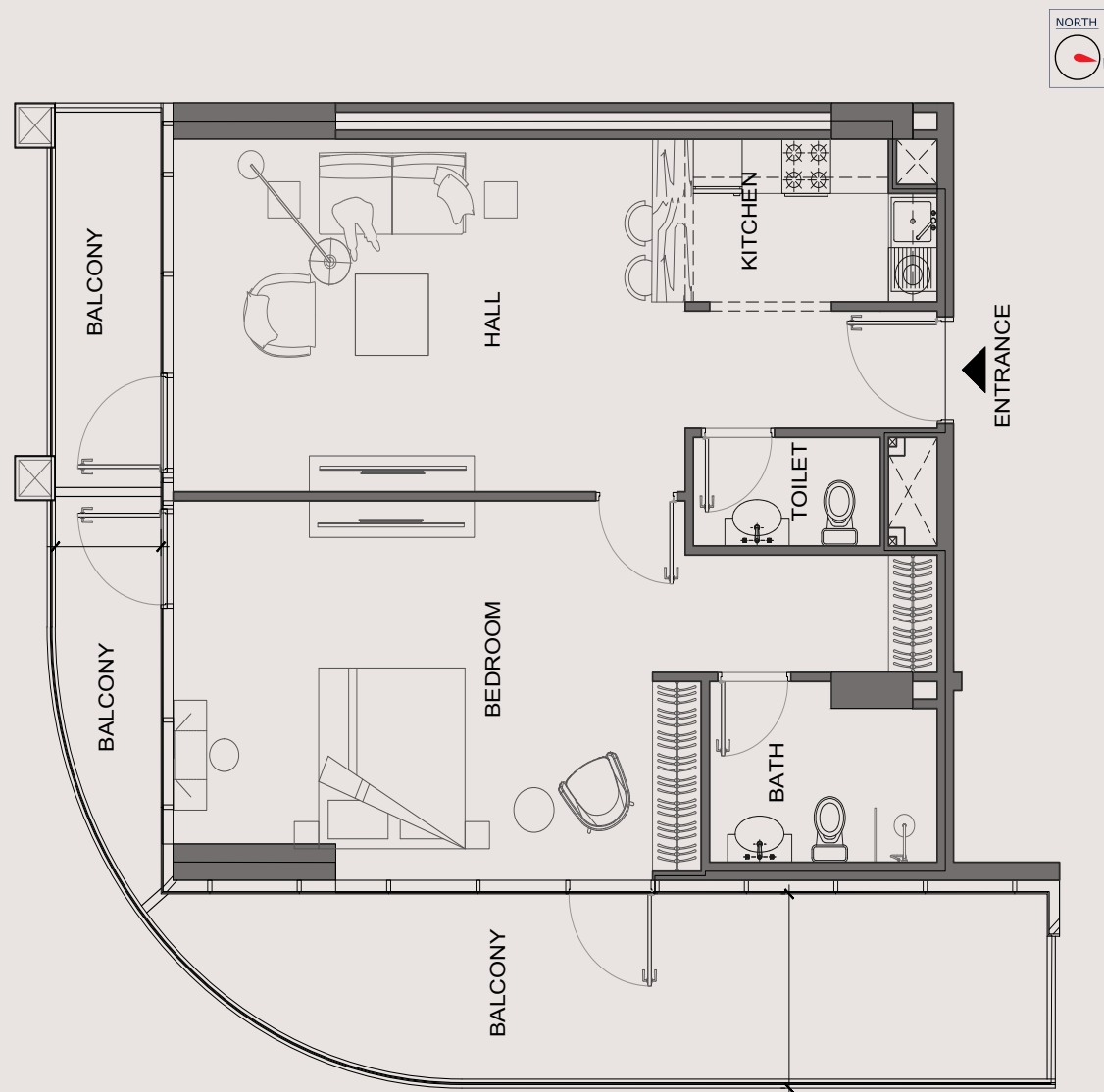
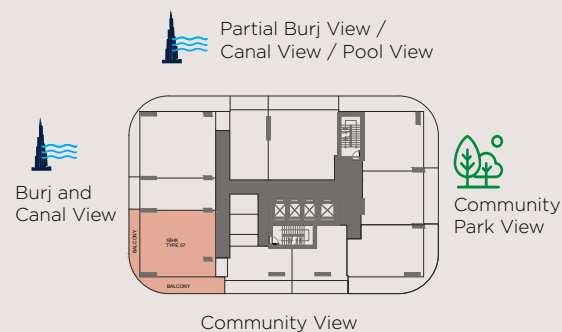
### 1 BEDROOM - TYPE F

Apartment Area 870.13 sq.ft.

Balcony Area 348.05 sq.ft.

**Total 1218.18 sq.ft.**

#### TYPICAL FLOOR PLATE (16-19<sup>TH</sup>)





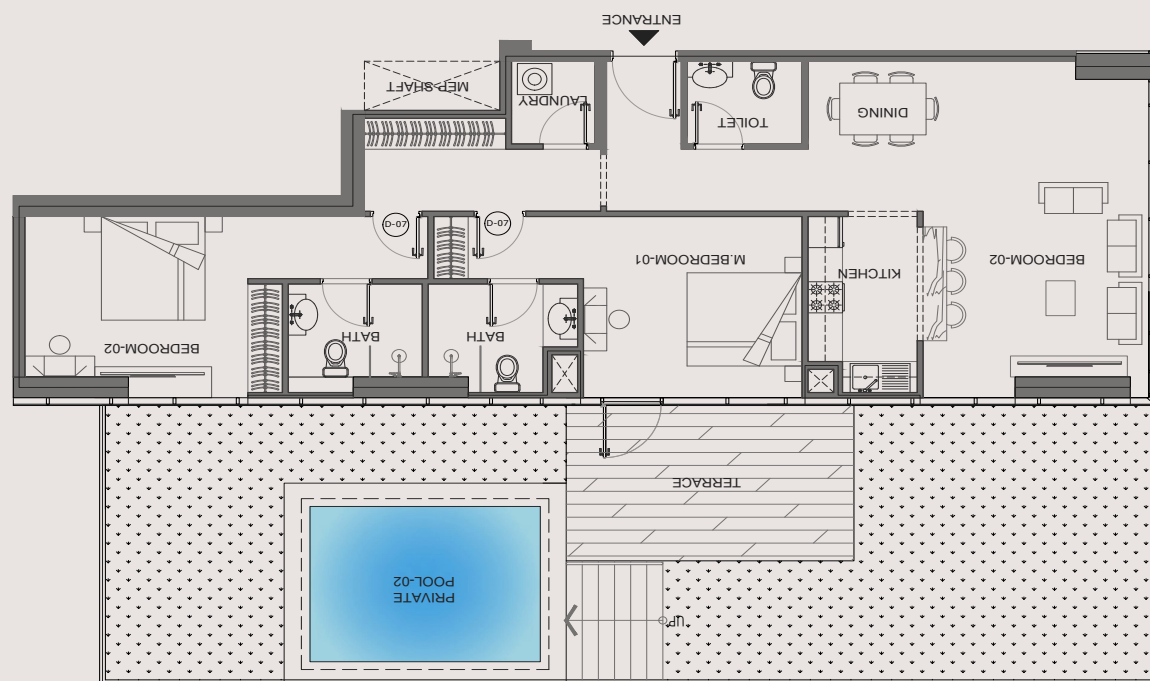
## APARTMENT PLANS

### 2 BEDROOM - TYPE A

Apartment Area	1181.9 sq.ft.
Balcony Area	805.52 sq.ft.
<b>Total</b>	<b>1987.42 sq.ft.</b>

## TYPICAL FLOOR PLATE (1<sup>ST</sup>)

Partial Burj View /  
Canal View / Pool View



## APARTMENT PLANS

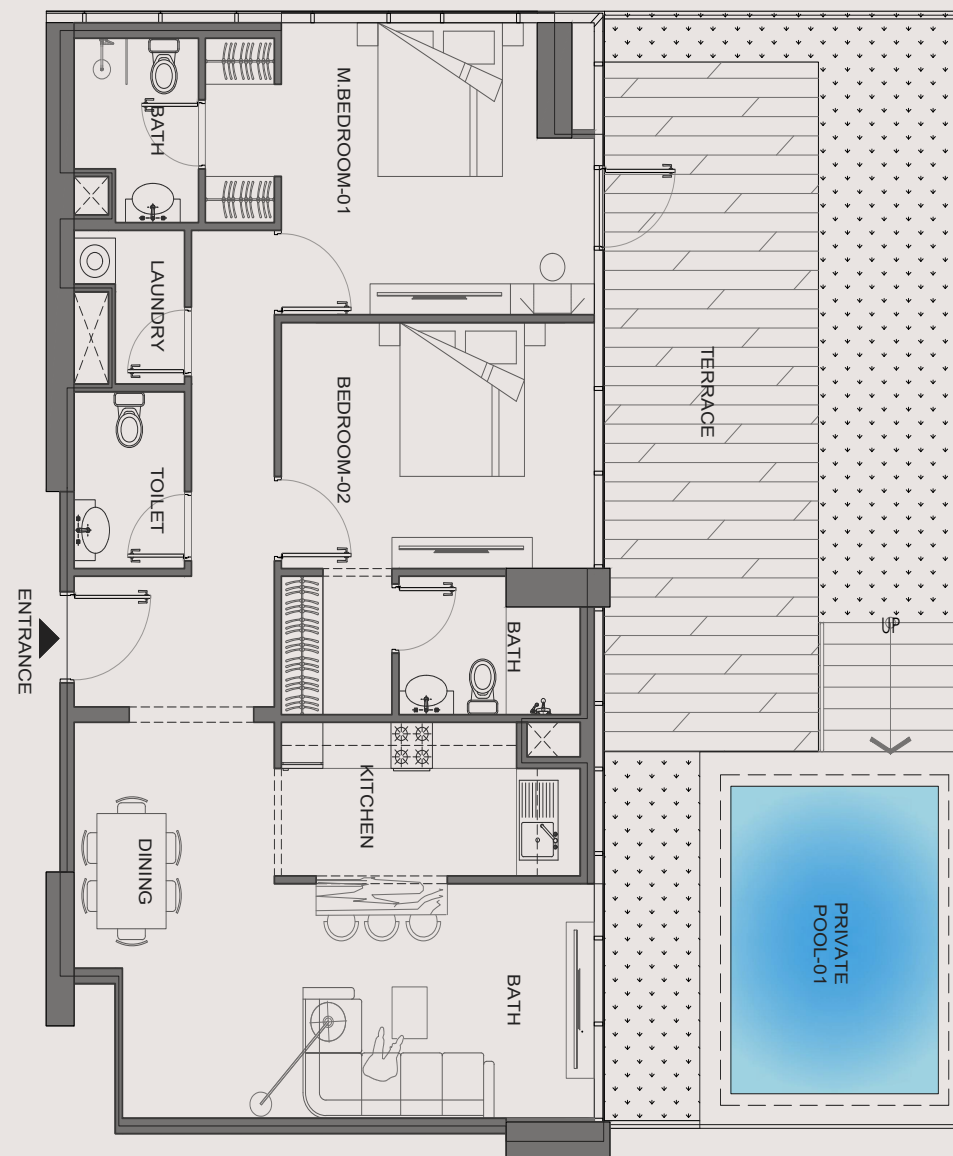
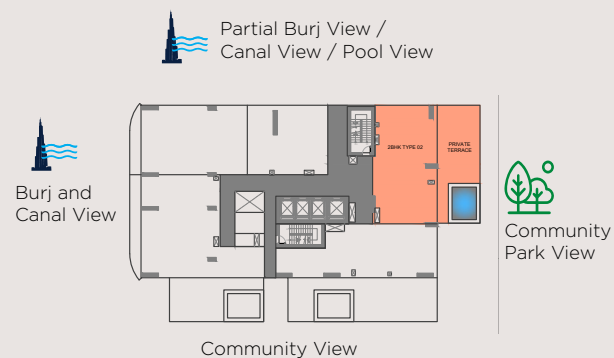
### 2 BEDROOM - TYPE B

Apartment Area 1211.84 sq.ft.

Balcony Area 1619.55 sq.ft.

**Total 2831.39 sq.ft.**

#### TYPICAL FLOOR PLATE (1<sup>ST</sup>)



## APARTMENT PLANS

### 3 BEDROOM - TYPE A

Apartment Area 1508.2 sq.ft.

Balcony Area 830.94 sq.ft.

**Total 2339.14 sq.ft.**

## TYPICAL FLOOR PLATE (1<sup>ST</sup>)

