

VÉDAIRE

RESIDENCES

BY ELTON



VÉDAIRE RESIDENCES

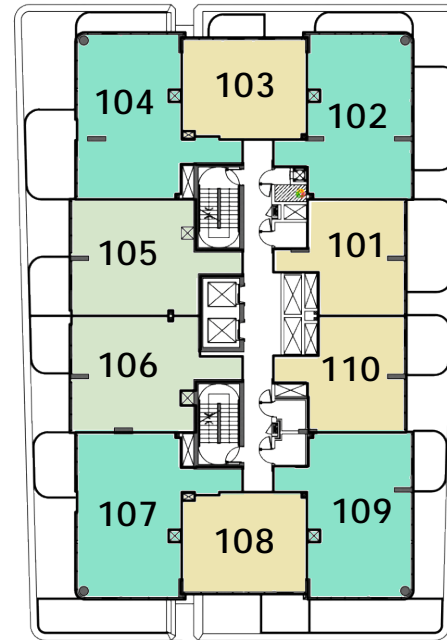
TYPICAL FLOOR KEY PLAN



Avenue Villas View



Landscape
Park View



Central Park View



1 Bedroom



1 Bedroom + Study



2 Bedroom

Disclaimer:

1. All room dimensions are measured to structural elements and exclude wall finishes and construction tolerances. 2. All dimensions have been provided by our consultant architects. 3. All materials, dimensions and drawings are approximate. Information is subject to change without notice, at developer's absolute discretion. 4. Actual suite area may vary from the stated area. Drawings are not to scale. 5. The developer reserves the right to make revisions to the floor plans and any features, materials, dimensions, drawings, and amenities mentioned on this plan and in the brochure, at it's absolute discretion, without notice and without any liability whatsoever. 6. Unit plans may exist in mirrored version. 7. For each unit type, unit sizes and details might be slightly different. Please refer to the sales and purchase agreement for the actual size of each specific unit. 8. All images used are for illustrative purposes only and do not represent the actual size, features, specifications, fittings, and furnishings.

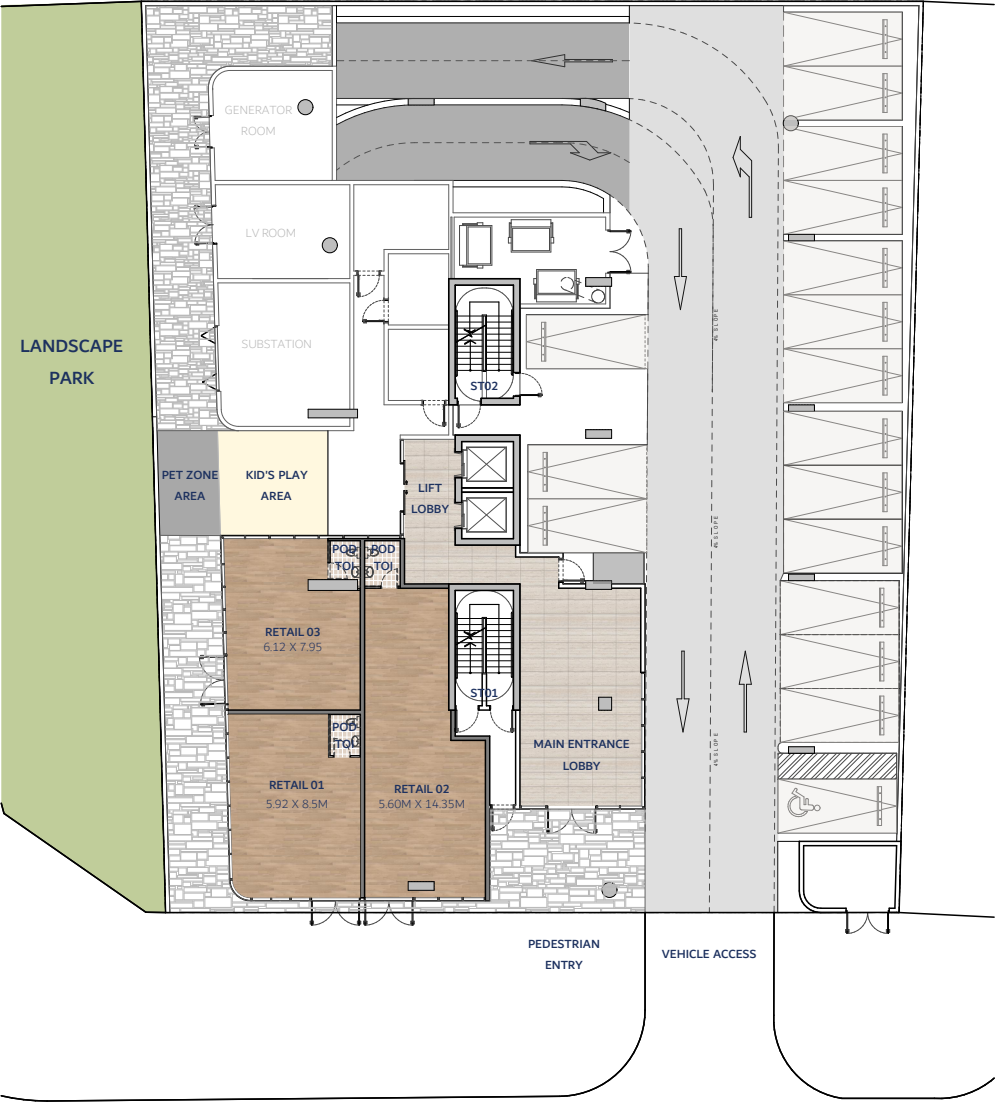
VÉDAIRE RESIDENCES

GROUND FLOOR PLAN

RETAIL 01	585.13 SQ.FT./ 54.36 SQ.MT
RETAIL 02	832.60 SQ.FT./ 77.35 SQ.MT.
RETAIL 03	570.06 SQ.FT./ 52.96 SQ.MT



Disclaimer:
1. All room dimensions are measured to structural elements and exclude wall finishes and construction tolerances. 2. All dimensions have been provided by our consultant architects. 3. All materials, dimensions and drawings are approximate. Information is subject to change without notice, at developer's absolute discretion. 4. Actual suite area may vary from the stated area. Drawings are not to scale. 5. The developer reserves the right to make revisions to the floor plans and any features, materials, dimensions, drawings, and amenities mentioned on this plan and in the brochure, at it's absolute discretion, without notice and without any liability whatsoever. 6. Unit plans may exist in mirrored version. 7. For each unit type, unit sizes and details might be slightly different. Please refer to the sales and purchase agreement for the actual size of each specific unit. 8. All images used are for illustrative purposes only and do not represent the actual size, features, specifications, fittings, and furnishings.



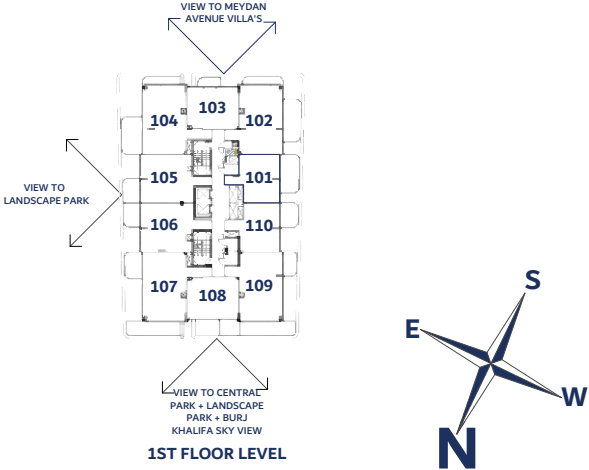


1ST FLOOR LEVEL

VÉDAIRE RESIDENCES

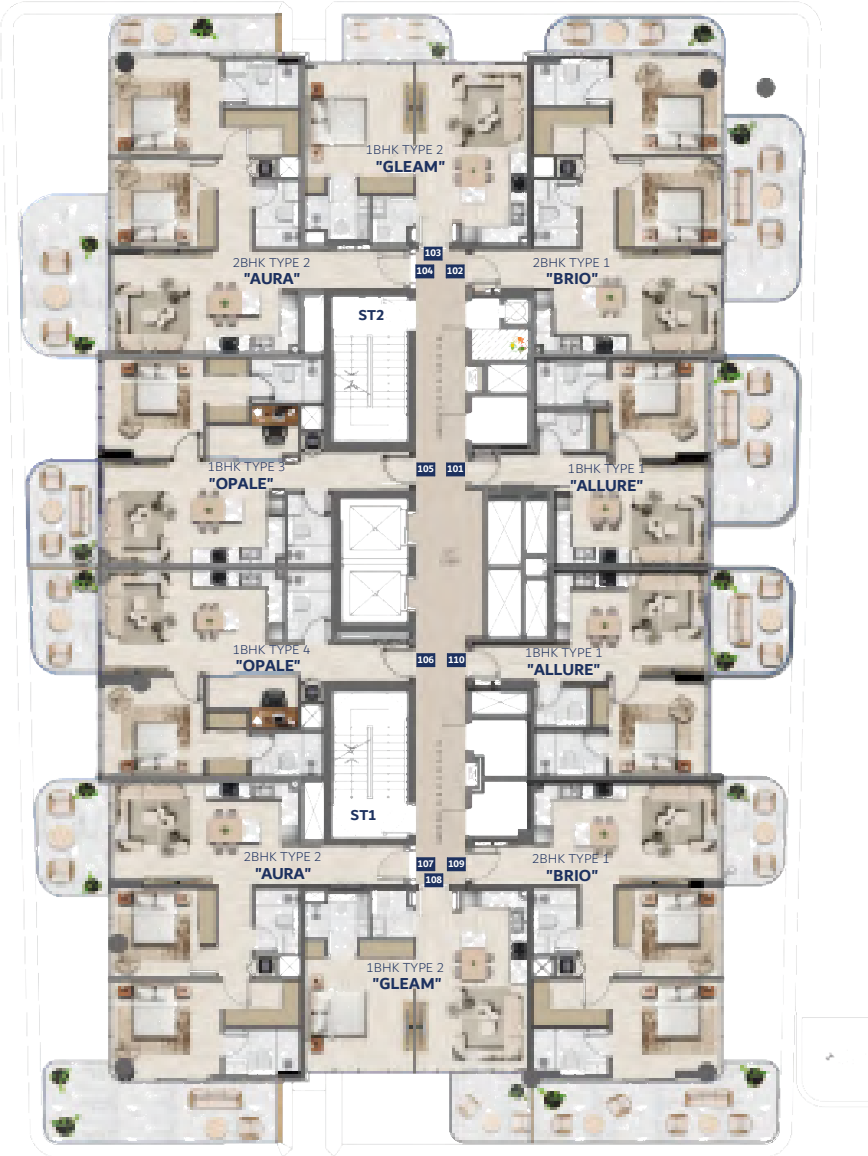
1ST FLOOR LEVEL

KEY PLAN



Disclaimer:

1. All room dimensions are measured to structural elements and exclude wall finishes and construction tolerances. 2. All dimensions have been provided by our consultant architects. 3. All materials, dimensions and drawings are approximate. Information is subject to change without notice, at developer's absolute discretion. 4. Actual suite area may vary from the stated area. Drawings are not to scale. 5. The developer reserves the right to make revisions to the floor plans and any features, materials, dimensions, drawings, and amenities mentioned on this plan and in the brochure, at it's absolute discretion, without notice and without any liability whatsoever. 6. Unit plans may exist in mirrored version. 7. For each unit type, unit sizes and details might be slightly different. Please refer to the sales and purchase agreement for the actual size of each specific unit. 8. All images used are for illustrative purposes only and do not represent the actual size, features, specifications, fittings, and furnishings.

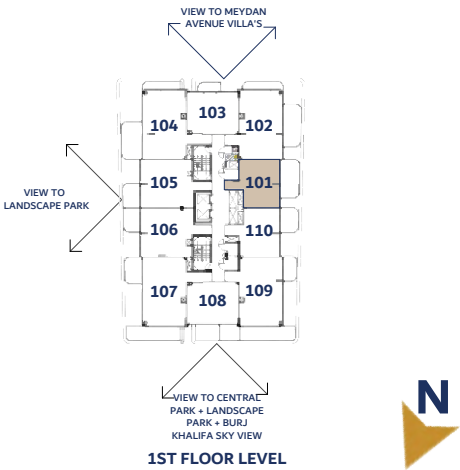


VÉDAIRE
RESIDENCES

ALLURE

ONE BEDROOM TYPE 1 (101)	
SUITE AREA	538.42 SQ. FT. / 50.02 SQ. MT.
BALCONY AREA	195.69 SQ. FT. / 18.18 SQ. MT.
TOTAL AREA	734.11 SQ. FT. / 68.20 SQ. MT.

KEY PLAN



ENTRY



ELTON

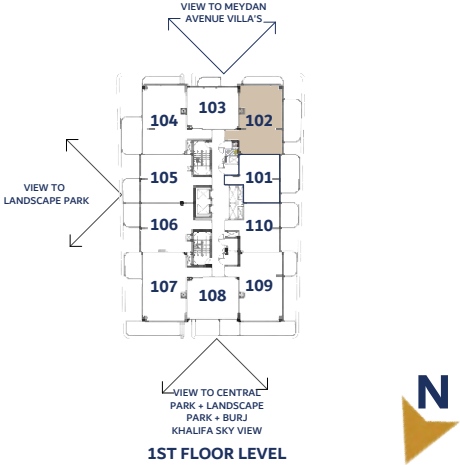
Disclaimer:
1. All room dimensions are measured to structural elements and exclude wall finishes and construction tolerances. 2. All dimensions have been provided by our consultant architects. 3. All materials, dimensions and drawings are approximate. Information is subject to change without notice, at developer's absolute discretion. 4. Actual suite area may vary from the stated area. Drawings are not to scale. 5. The developer reserves the right to make revisions to the floor plans and any features, materials, dimensions, drawings, and amenities mentioned on this plan and in the brochure, at it's absolute discretion, without notice and without any liability whatsoever. 6. Unit plans may exist in mirrored version. 7. For each unit type, unit sizes and details might be slightly different. Please refer to the sales and purchase agreement for the actual size of each specific unit. 8. All images used are for illustrative purposes only and do not represent the actual size, features, specifications, fittings, and furnishings.

VÉDAIRE
RESIDENCES

BRIO

TWO BEDROOM TYPE 1 (102)	
SUITE AREA	838.41 SQ.FT./ 77.89SQ.MT.
BALCONY AREA	288.80 SQ.FT./ 26.83 SQ.MT.
TOTAL AREA	1,127.21 SQ.FT./ 104.72 SQ.MT.

KEY PLAN



ELTON

Disclaimer:
1. All room dimensions are measured to structural elements and exclude wall finishes and construction tolerances. 2. All dimensions have been provided by our consultant architects. 3. All materials, dimensions and drawings are approximate. Information is subject to change without notice, at developer's absolute discretion. 4. Actual suite area may vary from the stated area. Drawings are not to scale. 5. The developer reserves the right to make revisions to the floor plans and any features, materials, dimensions, drawings, and amenities mentioned on this plan and in the brochure, at its absolute discretion, without notice and without any liability whatsoever. 6. Unit plans may exist in mirrored version. 7. For each unit type, unit sizes and details might be slightly different. Please refer to the sales and purchase agreement for the actual size of each specific unit. 8. All images used are for illustrative purposes only and do not represent the actual size, features, specifications, fittings, and furnishings.

ENTRY

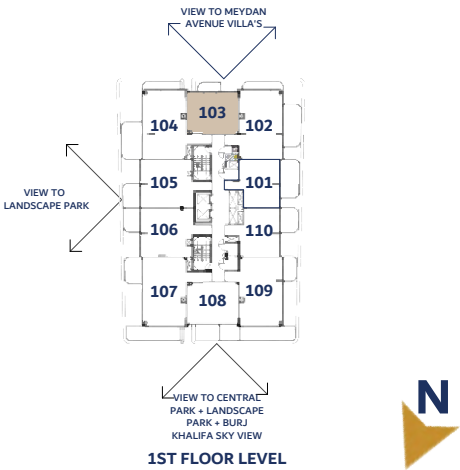


VÉDAIRE
RESIDENCES

GLEAM

ONE BEDROOM TYPE 2 (103)	
SUITE AREA	575.44 SQ.FT./53.46SQ.MT.
BALCONY AREA	74.27 SQ.FT./ 6.90 SQ.MT.
TOTAL AREA	649.71 SQ.FT./ 60.36 SQ.MT.

KEY PLAN



ELTON

Disclaimer:
1. All room dimensions are measured to structural elements and exclude wall finishes and construction tolerances. 2. All dimensions have been provided by our consultant architects. 3. All materials, dimensions and drawings are approximate. Information is subject to change without notice, at developer's absolute discretion. 4. Actual suite area may vary from the stated area. Drawings are not to scale. 5. The developer reserves the right to make revisions to the floor plans and any features, materials, dimensions, drawings, and amenities mentioned on this plan and in the brochure, at its absolute discretion, without notice and without any liability whatsoever. 6. Unit plans may exist in mirrored version. 7. For each unit type, unit sizes and details might be slightly different. Please refer to the sales and purchase agreement for the actual size of each specific unit. 8. All images used are for illustrative purposes only and do not represent the actual size, features, specifications, fittings, and furnishings.

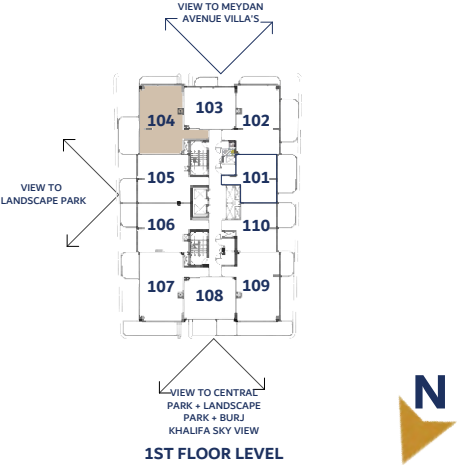


VÉDAIRE RESIDENCES

AURA

TWO BEDROOM TYPE 2 (104)	
SUITE AREA	871.24 SQ.FT./ 80.94SQ.MT.
BALCONY AREA	279.97 SQ.FT./ 26.01 SQ.MT.
TOTAL AREA	1,151.21 SQ.FT./ 106.95 SQ.MT.

KEY PLAN



ELTON

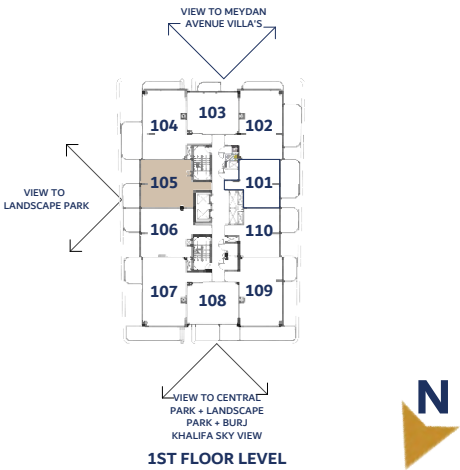
Disclaimer:
1. All room dimensions are measured to structural elements and exclude wall finishes and construction tolerances. 2. All dimensions have been provided by our consultant architects. 3. All materials, dimensions and drawings are approximate. Information is subject to change without notice, at developer's absolute discretion. 4. Actual suite area may vary from the stated area. Drawings are not to scale. 5. The developer reserves the right to make revisions to the floor plans and any features, materials, dimensions, drawings, and amenities mentioned on this plan and in the brochure, at its absolute discretion, without notice and without any liability whatsoever. 6. Unit plans may exist in mirrored version. 7. For each unit type, unit sizes and details might be slightly different. Please refer to the sales and purchase agreement for the actual size of each specific unit. 8. All images used are for illustrative purposes only and do not represent the actual size, features, specifications, fittings, and furnishings.

VÉDAIRE RESIDENCES

OPALE

ONE BEDROOM TYPE 3 (105)	
SUITE AREA	725.49 SQ.FT./ 67.40SQ.MT.
BALCONY AREA	103.87 SQ.FT./ 9.65 SQ.MT.
TOTAL AREA	829.36 SQ.FT./ 77.05 SQ.MT.

KEY PLAN



ELTON

Disclaimer:

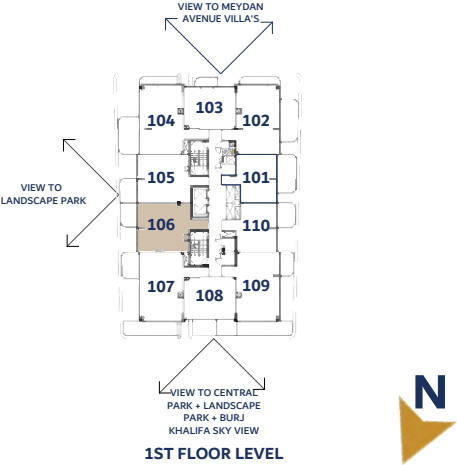
1. All room dimensions are measured to structural elements and exclude wall finishes and construction tolerances. 2. All dimensions have been provided by our consultant architects. 3. All materials, dimensions and drawings are approximate. Information is subject to change without notice, at developer's absolute discretion. 4. Actual suite area may vary from the stated area. Drawings are not to scale. 5. The developer reserves the right to make revisions to the floor plans and any features, materials, dimensions, drawings, and amenities mentioned on this plan and in the brochure, at it's absolute discretion, without notice and without any liability whatsoever. 6. Unit plans may exist in mirrored version. 7. For each unit type, unit sizes and details might be slightly different. Please refer to the sales and purchase agreement for the actual size of each specific unit. 8. All images used are for illustrative purposes only and do not represent the actual size, features, specifications, fittings, and furnishings.

VÉDAIRE RESIDENCES

OPALE

ONE BEDROOM TYPE 4 (106)	
SUITE AREA	736.47 SQ.FT./ 68.42SQ.MT.
BALCONY AREA	97.41 SQ.FT./ 9.05 SQ.MT.
TOTAL AREA	833.88 SQ.FT./ 77.47 SQ.MT.

KEY PLAN



ELTON

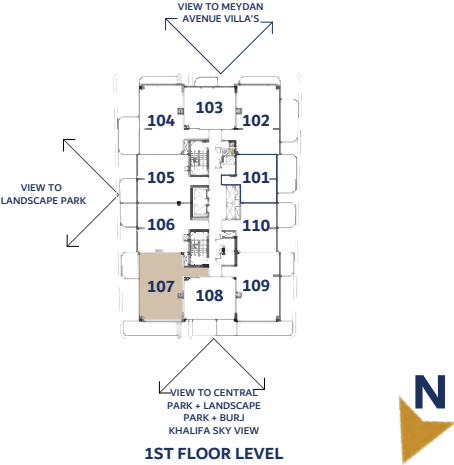
Disclaimer:
1. All room dimensions are measured to structural elements and exclude wall finishes and construction tolerances. 2. All dimensions have been provided by our consultant architects. 3. All materials, dimensions and drawings are approximate. Information is subject to change without notice, at developer's absolute discretion. 4. Actual suite area may vary from the stated area. Drawings are not to scale. 5. The developer reserves the right to make revisions to the floor plans and any features, materials, dimensions, drawings, and amenities mentioned on this plan and in the brochure, at it's absolute discretion, without notice and without any liability whatsoever. 6. Unit plans may exist in mirrored version. 7. For each unit type, unit sizes and details might be slightly different. Please refer to the sales and purchase agreement for the actual size of each specific unit. 8. All images used are for illustrative purposes only and do not represent the actual size, features, specifications, fittings, and furnishings.

VÉDAIRE RESIDENCES

AURA

TWO BEDROOM TYPE 2 (107)	
SUITE AREA	871.24 SQ.FT./ 80.94SQ.MT.
BALCONY AREA	335.94 SQ.FT./ 31.21 SQ.MT.
TOTAL AREA	1,207.18 SQ.FT./ 112.15 SQ.MT.

KEY PLAN



ELTON

Disclaimer:
1. All room dimensions are measured to structural elements and exclude wall finishes and construction tolerances. 2. All dimensions have been provided by our consultant architects. 3. All materials, dimensions and drawings are approximate. Information is subject to change without notice, at developer's absolute discretion. 4. Actual suite area may vary from the stated area. Drawings are not to scale. 5. The developer reserves the right to make revisions to the floor plans and any features, materials, dimensions, drawings, and amenities mentioned on this plan and in the brochure, at it's absolute discretion, without notice and without any liability whatsoever. 6. Unit plans may exist in mirrored version. 7. For each unit type, unit sizes and details might be slightly different. Please refer to the sales and purchase agreement for the actual size of each specific unit. 8. All images used are for illustrative purposes only and do not represent the actual size, features, specifications, fittings, and furnishings.

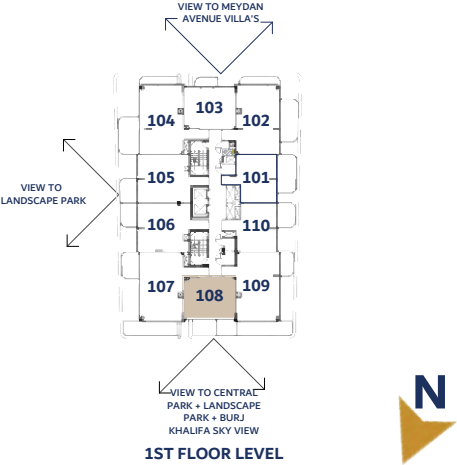


VÉDAIRE RESIDENCES

GLEAM

ONE BEDROOM TYPE 2 (108)	
SUITE AREA	576.84 SQ.FT./ 53.59SQ.MT.
BALCONY AREA	78.79 SQ.FT./ 7.32 SQ.MT.
TOTAL AREA	655.63 SQ.FT./ 60.91 SQ.MT.

KEY PLAN



Disclaimer:
1. All room dimensions are measured to structural elements and exclude wall finishes and construction tolerances. 2. All dimensions have been provided by our consultant architects. 3. All materials, dimensions and drawings are approximate. Information is subject to change without notice, at developer's absolute discretion. 4. Actual suite area may vary from the stated area. Drawings are not to scale. 5. The developer reserves the right to make revisions to the floor plans and any features, materials, dimensions, drawings, and amenities mentioned on this plan and in the brochure, at it's absolute discretion, without notice and without any liability whatsoever. 6. Unit plans may exist in mirrored version. 7. For each unit type, unit sizes and details might be slightly different. Please refer to the sales and purchase agreement for the actual size of each specific unit. 8. All images used are for illustrative purposes only and do not represent the actual size, features, specifications, fittings, and furnishings.

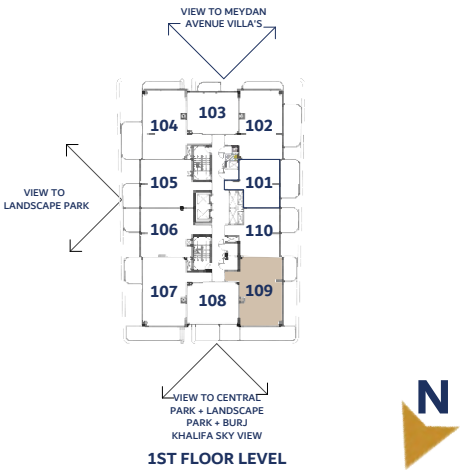


VÉDAIRE RESIDENCES

BRIO

TWO BEDROOM TYPE 1 (109)	
SUITE AREA	838.73 SQ.FT./ 77.92SQ.MT.
BALCONY AREA	314.52 SQ.FT./ 29.22 SQ.MT.
TOTAL AREA	1,153.25 SQ.FT./ 107.14 SQ.MT.

KEY PLAN



ELTON

Disclaimer:

1. All room dimensions are measured to structural elements and exclude wall finishes and construction tolerances. 2. All dimensions have been provided by our consultant architects. 3. All materials, dimensions and drawings are approximate. Information is subject to change without notice, at developer's absolute discretion. 4. Actual suite area may vary from the stated area. Drawings are not to scale. 5. The developer reserves the right to make revisions to the floor plans and any features, materials, dimensions, drawings, and amenities mentioned on this plan and in the brochure, at its absolute discretion, without notice and without any liability whatsoever. 6. Unit plans may exist in mirrored version. 7. For each unit type, unit sizes and details might be slightly different. Please refer to the sales and purchase agreement for the actual size of each specific unit. 8. All images used are for illustrative purposes only and do not represent the actual size, features, specifications, fittings, and furnishings.

ENTRY

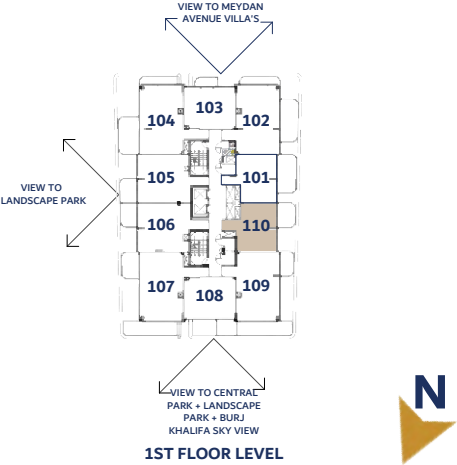


VÉDAIRE RESIDENCES

ALLURE

ONE BEDROOM TYPE 1 (110)	
SUITE AREA	546.92 SQ.FT./ 50.81SQ.MT.
BALCONY AREA	116.79 SQ.FT./ 10.85 SQ.MT.
TOTAL AREA	663.71 SQ.FT./ 61.66 SQ.MT.

KEY PLAN



ENTRY



ELTON

Disclaimer:

1. All room dimensions are measured to structural elements and exclude wall finishes and construction tolerances. 2. All dimensions have been provided by our consultant architects. 3. All materials, dimensions and drawings are approximate. Information is subject to change without notice, at developer's absolute discretion. 4. Actual suite area may vary from the stated area. Drawings are not to scale. 5. The developer reserves the right to make revisions to the floor plans and any features, materials, dimensions, drawings, and amenities mentioned on this plan and in the brochure, at it's absolute discretion, without notice and without any liability whatsoever. 6. Unit plans may exist in mirrored version. 7. For each unit type, unit sizes and details might be slightly different. Please refer to the sales and purchase agreement for the actual size of each specific unit. 8. All images used are for illustrative purposes only and do not represent the actual size, features, specifications, fittings, and furnishings.

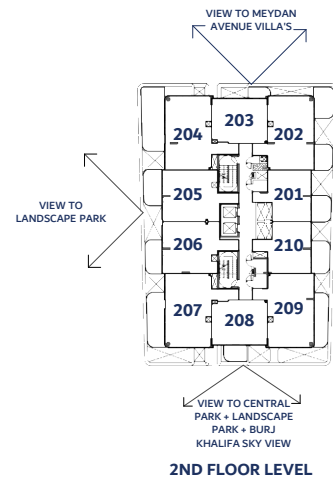


2ND FLOOR LEVEL

VÉDAIRE RESIDENCES

2ND FLOOR LEVEL

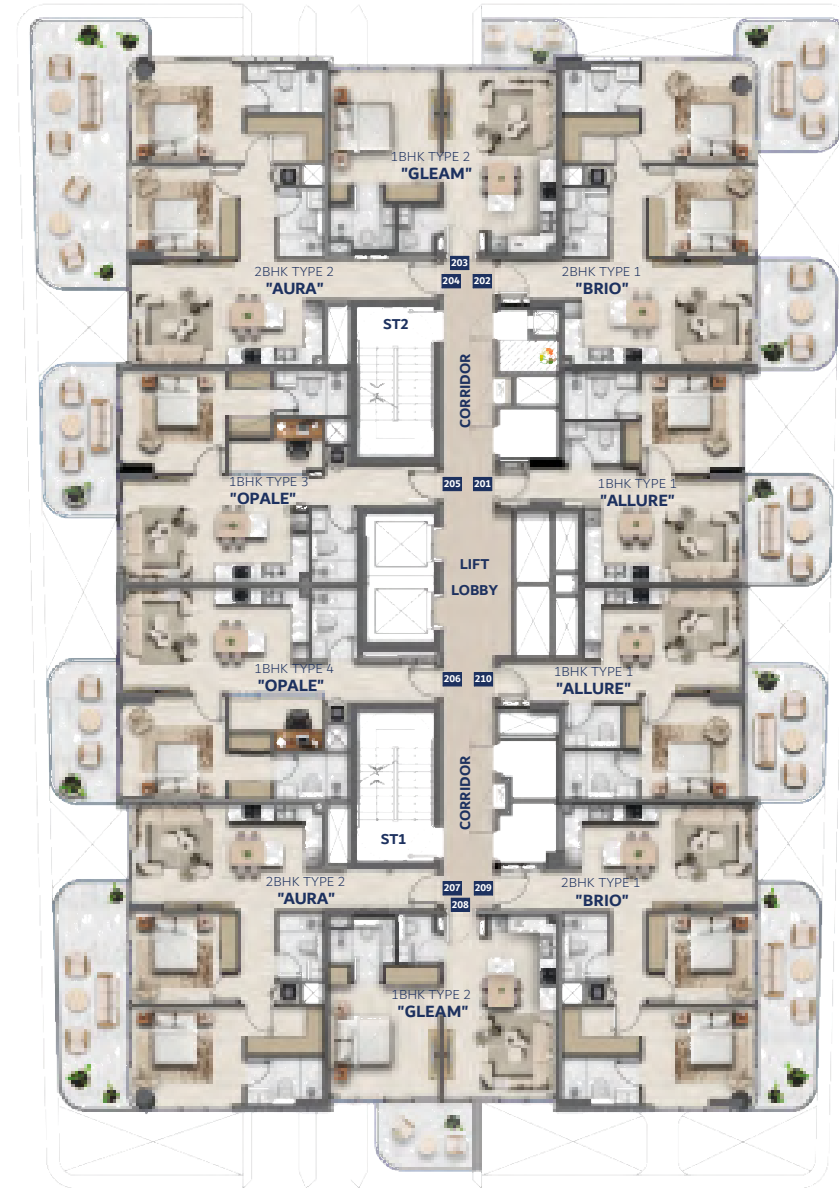
KEY PLAN



ELTON

Disclaimer:

1. All room dimensions are measured to structural elements and exclude wall finishes and construction tolerances. 2. All dimensions have been provided by our consultant architects. 3. All materials, dimensions and drawings are approximate. Information is subject to change without notice, at developer's absolute discretion. 4. Actual suite area may vary from the stated area. Drawings are not to scale. 5. The developer reserves the right to make revisions to the floor plans and any features, materials, dimensions, drawings, and amenities mentioned on this plan and in the brochure, at its absolute discretion, without notice and without any liability whatsoever. 6. Unit plans may exist in mirrored version. 7. For each unit type, unit sizes and details might be slightly different. Please refer to the sales and purchase agreement for the actual size of each specific unit. 8. All images used are for illustrative purposes only and do not represent the actual size, features, specifications, fittings, and furnishings.

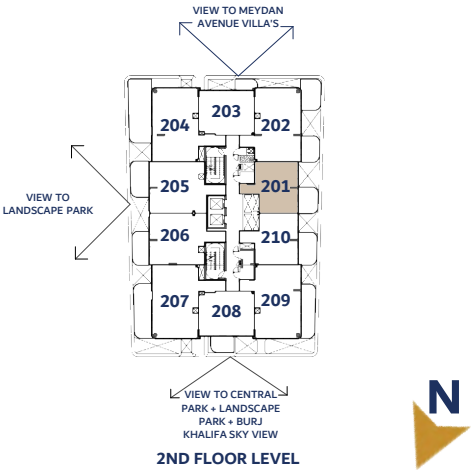


VÉDAIRE RESIDENCES

ALLURE

ONE BEDROOM TYPE 1 (201)	
SUITE AREA	538.85 SQ. FT. / 50.06 SQ. MT.
BALCONY AREA	120.88 SQ. FT. / 11.23 SQ. MT.
TOTAL AREA	659.73 SQ. FT. / 61.29 SQ. MT.

KEY PLAN



ENTRY



ELTON

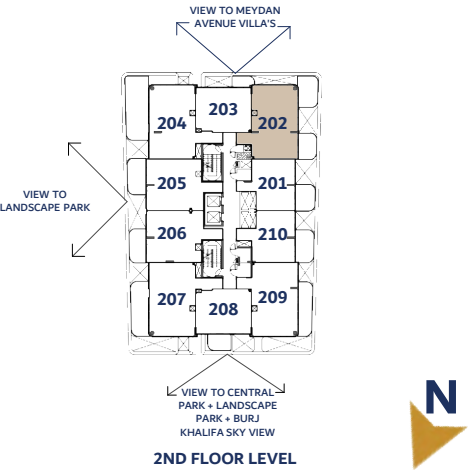
Disclaimer:
1. All room dimensions are measured to structural elements and exclude wall finishes and construction tolerances. 2. All dimensions have been provided by our consultant architects. 3. All materials, dimensions and drawings are approximate. Information is subject to change without notice, at developer's absolute discretion. 4. Actual suite area may vary from the stated area. Drawings are not to scale. 5. The developer reserves the right to make revisions to the floor plans and any features, materials, dimensions, drawings, and amenities mentioned on this plan and in the brochure, at it's absolute discretion, without notice and without any liability whatsoever. 6. Unit plans may exist in mirrored version. 7. For each unit type, unit sizes and details might be slightly different. Please refer to the sales and purchase agreement for the actual size of each specific unit. 8. All images used are for illustrative purposes only and do not represent the actual size, features, specifications, fittings, and furnishings.

VÉDAIRE
RESIDENCES

BRIO

TWO BEDROOM TYPE 1 (202)	
SUITE AREA	839.70 SQ.FT./ 78.01 SQ.MT.
BALCONY AREA	265.87 SQ.FT./ 24.70 SQ.MT.
TOTAL AREA	1,105.57 SQ.FT./ 102.71 SQ.MT.

KEY PLAN

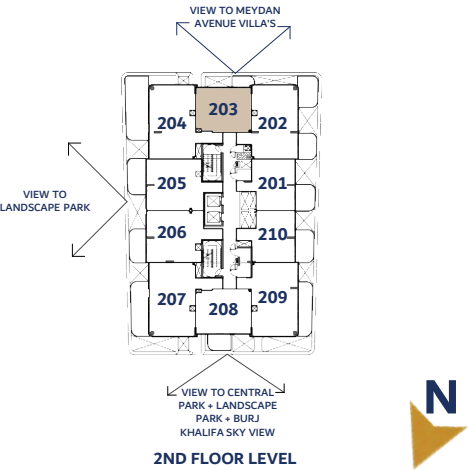


VÉDAIRE
RESIDENCES

GLEAM

ONE BEDROOM TYPE 2 (203)	
SUITE AREA	576.74 SQ.FT./ 53.58 SQ.MT.
BALCONY AREA	57.26 SQ.FT./ 5.32 SQ.MT.
TOTAL AREA	634.00 SQ.FT./ 58.90 SQ.MT.

KEY PLAN

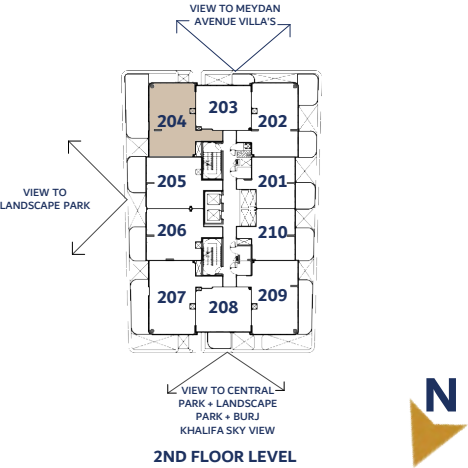


VÉDAIRE RESIDENCES

AURA

TWO BEDROOM TYPE 2 (204)	
SUITE AREA	871.13 SQ.FT./ 80.93 SQ.MT.
BALCONY AREA	339.50 SQ.FT./ 31.54 SQ.MT.
TOTAL AREA	1,210.63 SQ.FT./ 112.47 SQ.MT.

KEY PLAN



ELTON

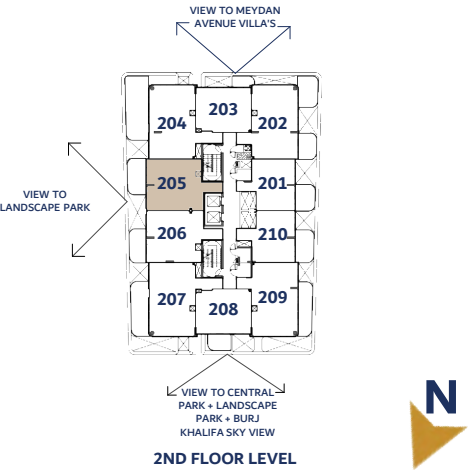
Disclaimer:
1. All room dimensions are measured to structural elements and exclude wall finishes and construction tolerances. 2. All dimensions have been provided by our consultant architects. 3. All materials, dimensions and drawings are approximate. Information is subject to change without notice, at developer's absolute discretion. 4. Actual suite area may vary from the stated area. Drawings are not to scale. 5. The developer reserves the right to make revisions to the floor plans and any features, materials, dimensions, drawings, and amenities mentioned on this plan and in the brochure, at its absolute discretion, without notice and without any liability whatsoever. 6. Unit plans may exist in mirrored version. 7. For each unit type, unit sizes and details might be slightly different. Please refer to the sales and purchase agreement for the actual size of each specific unit. 8. All images used are for illustrative purposes only and do not represent the actual size, features, specifications, fittings, and furnishings.

VÉDAIRE RESIDENCES

OPALE

ONE BEDROOM TYPE 3 (205)	
SUITE AREA	725.39 SQ.FT./ 67.39 SQ.MT.
BALCONY AREA	145.96 SQ.FT./ 13.56 SQ.MT.
TOTAL AREA	871.35 SQ.FT./ 80.95 SQ.MT.

KEY PLAN



ELTON

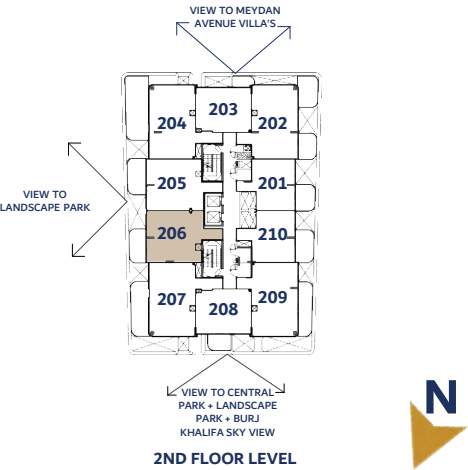
Disclaimer:
1. All room dimensions are measured to structural elements and exclude wall finishes and construction tolerances. 2. All dimensions have been provided by our consultant architects. 3. All materials, dimensions and drawings are approximate. Information is subject to change without notice, at developer's absolute discretion. 4. Actual suite area may vary from the stated area. Drawings are not to scale. 5. The developer reserves the right to make revisions to the floor plans and any features, materials, dimensions, drawings, and amenities mentioned on this plan and in the brochure, at its absolute discretion, without notice and without any liability whatsoever. 6. Unit plans may exist in mirrored version. 7. For each unit type, unit sizes and details might be slightly different. Please refer to the sales and purchase agreement for the actual size of each specific unit. 8. All images used are for illustrative purposes only and do not represent the actual size, features, specifications, fittings, and furnishings.

VÉDAIRE RESIDENCES

OPALE

ONE BEDROOM TYPE 4 (206)	
SUITE AREA	734.64 SQ.FT./ 68.25 SQ.MT.
BALCONY AREA	124.43 SQ.FT./ 11.56 SQ.MT.
TOTAL AREA	859.07 SQ.FT./ 79.81 SQ.MT.

KEY PLAN



ELTON

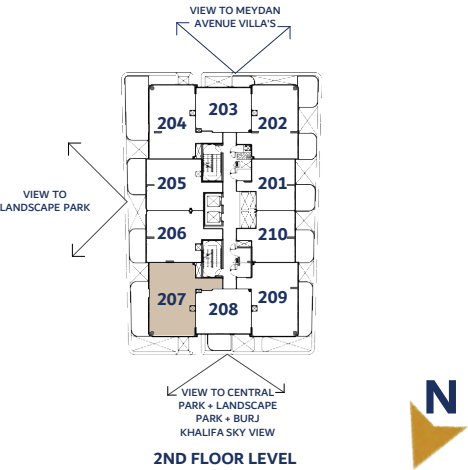
Disclaimer:
1. All room dimensions are measured to structural elements and exclude wall finishes and construction tolerances. 2. All dimensions have been provided by our consultant architects. 3. All materials, dimensions and drawings are approximate. Information is subject to change without notice, at developer's absolute discretion. 4. Actual suite area may vary from the stated area. Drawings are not to scale. 5. The developer reserves the right to make revisions to the floor plans and any features, materials, dimensions, drawings, and amenities mentioned on this plan and in the brochure, at its absolute discretion, without notice and without any liability whatsoever. 6. Unit plans may exist in mirrored version. 7. For each unit type, unit sizes and details might be slightly different. Please refer to the sales and purchase agreement for the actual size of each specific unit. 8. All images used are for illustrative purposes only and do not represent the actual size, features, specifications, fittings, and furnishings.

VÉDAIRE RESIDENCES

AURA

TWO BEDROOM TYPE 2 (207)	
SUITE AREA	869.95 SQ.FT. / 80.82 SQ.MT.
BALCONY AREA	212.05 SQ.FT. / 19.70 SQ.MT.
TOTAL AREA	1,082.00 SQ.FT. / 100.52 SQ.MT.

KEY PLAN



ELTON

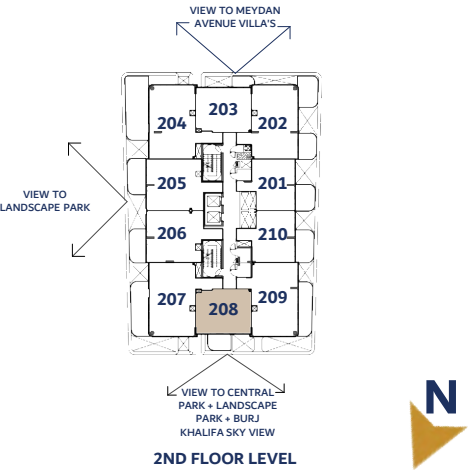
Disclaimer:
1. All room dimensions are measured to structural elements and exclude wall finishes and construction tolerances. 2. All dimensions have been provided by our consultant architects. 3. All materials, dimensions and drawings are approximate. Information is subject to change without notice, at developer's absolute discretion. 4. Actual suite area may vary from the stated area. Drawings are not to scale. 5. The developer reserves the right to make revisions to the floor plans and any features, materials, dimensions, drawings, and amenities mentioned on this plan and in the brochure, at it's absolute discretion, without notice and without any liability whatsoever. 6. Unit plans may exist in mirrored version. 7. For each unit type, unit sizes and details might be slightly different. Please refer to the sales and purchase agreement for the actual size of each specific unit. 8. All images used are for illustrative purposes only and do not represent the actual size, features, specifications, fittings, and furnishings.

VÉDAIRE RESIDENCES

GLEAM

ONE BEDROOM TYPE 2 (208)	
SUITE AREA	575.66 SQ. FT. / 53.48 SQ. MT.
BALCONY AREA	89.34 SQ. FT. / 8.30 SQ. MT.
TOTAL AREA	665.00 SQ. FT. / 61.78 SQ. MT.

KEY PLAN



Disclaimer:

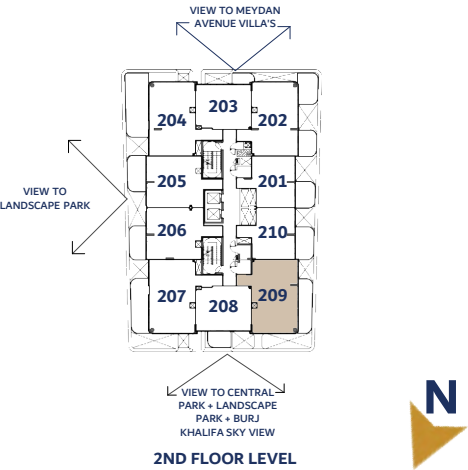
1. All room dimensions are measured to structural elements and exclude wall finishes and construction tolerances. 2. All dimensions have been provided by our consultant architects. 3. All materials, dimensions and drawings are approximate. Information is subject to change without notice, at developer's absolute discretion. 4. Actual suite area may vary from the stated area. Drawings are not to scale. 5. The developer reserves the right to make revisions to the floor plans and any features, materials, dimensions, drawings, and amenities mentioned on this plan and in the brochure, at it's absolute discretion, without notice and without any liability whatsoever. 6. Unit plans may exist in mirrored version. 7. For each unit type, unit sizes and details might be slightly different. Please refer to the sales and purchase agreement for the actual size of each specific unit. 8. All images used are for illustrative purposes only and do not represent the actual size, features, specifications, fittings, and furnishings.

VÉDAIRE
RESIDENCES

BRIO

TWO BEDROOM TYPE 1 (209)	
SUITE AREA	837.44 SQ.FT./ 77.80 SQ.MT.
BALCONY AREA	178.79 SQ.FT./ 16.61 SQ.MT.
TOTAL AREA	1,016.23 SQ.FT./ 94.41 SQ.MT.

KEY PLAN

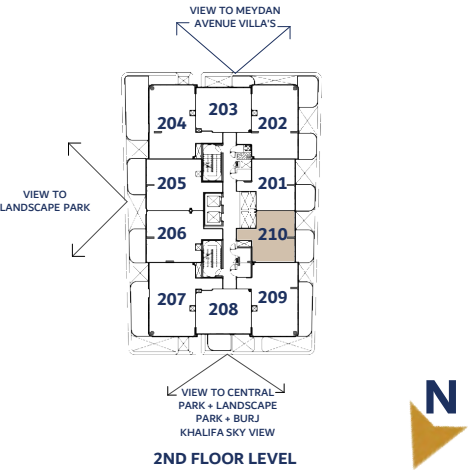


VÉDAIRE
RESIDENCES

ALLURE

ONE BEDROOM TYPE 1 (210)	
SUITE AREA	545.52 SQ.FT./ 50.68 SQ.MT.
BALCONY AREA	142.08 SQ.FT./ 13.20 SQ.MT.
TOTAL AREA	687.60 SQ.FT./ 63.88 SQ.MT.

KEY PLAN



ENTRY



ELTON

Disclaimer:
1. All room dimensions are measured to structural elements and exclude wall finishes and construction tolerances. 2. All dimensions have been provided by our consultant architects. 3. All materials, dimensions and drawings are approximate. Information is subject to change without notice, at developer's absolute discretion. 4. Actual suite area may vary from the stated area. Drawings are not to scale. 5. The developer reserves the right to make revisions to the floor plans and any features, materials, dimensions, drawings, and amenities mentioned on this plan and in the brochure, at it's absolute discretion, without notice and without any liability whatsoever. 6. Unit plans may exist in mirrored version. 7. For each unit type, unit sizes and details might be slightly different. Please refer to the sales and purchase agreement for the actual size of each specific unit. 8. All images used are for illustrative purposes only and do not represent the actual size, features, specifications, fittings, and furnishings.

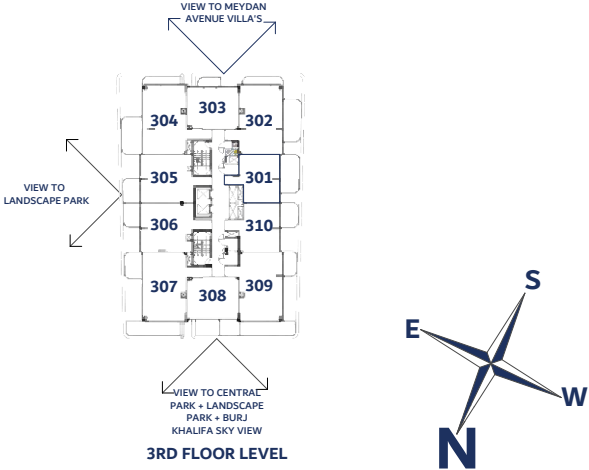


3RD FLOOR LEVEL

VÉDAIRE
RESIDENCES

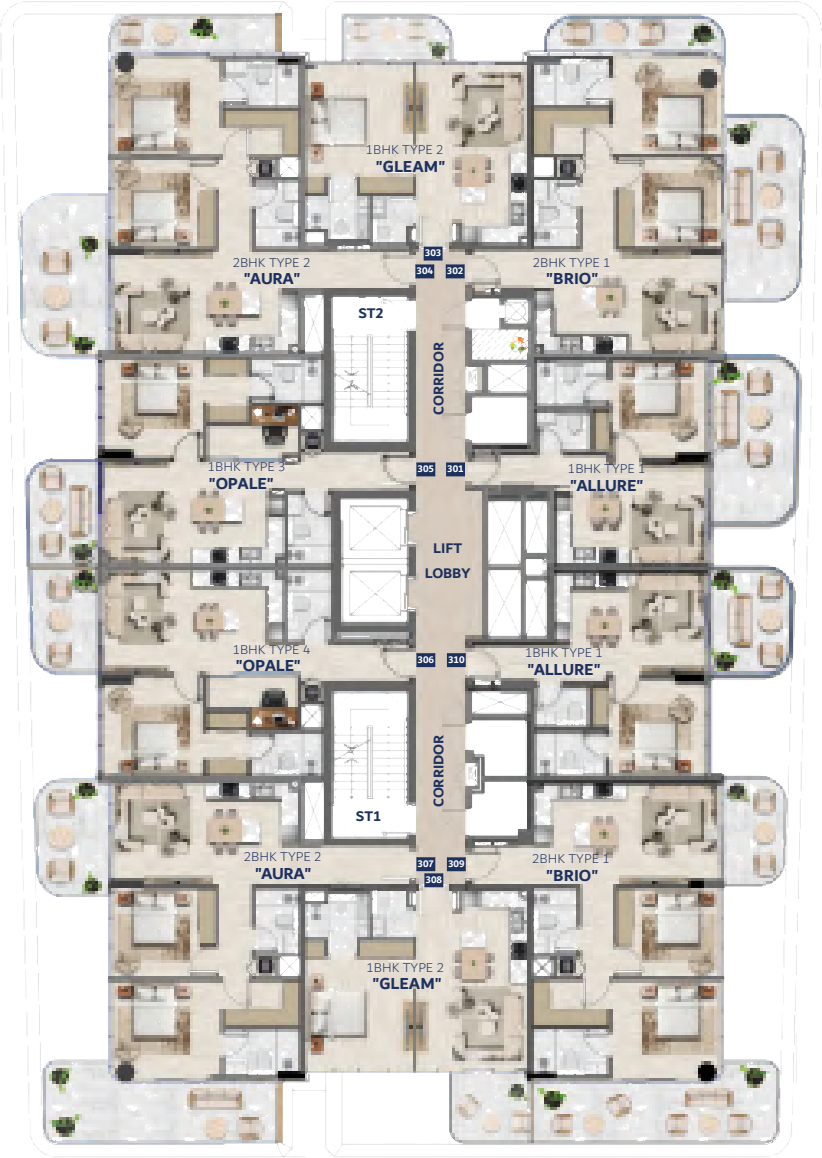
3RD FLOOR LEVEL

KEY PLAN



Disclaimer:

1. All room dimensions are measured to structural elements and exclude wall finishes and construction tolerances. 2. All dimensions have been provided by our consultant architects. 3. All materials, dimensions and drawings are approximate. Information is subject to change without notice, at developer's absolute discretion. 4. Actual suite area may vary from the stated area. Drawings are not to scale. 5. The developer reserves the right to make revisions to the floor plans and any features, materials, dimensions, drawings, and amenities mentioned on this plan and in the brochure, at it's absolute discretion, without notice and without any liability whatsoever. 6. Unit plans may exist in mirrored version. 7. For each unit type, unit sizes and details might be slightly different. Please refer to the sales and purchase agreement for the actual size of each specific unit. 8. All images used are for illustrative purposes only and do not represent the actual size, features, specifications, fittings, and furnishings.

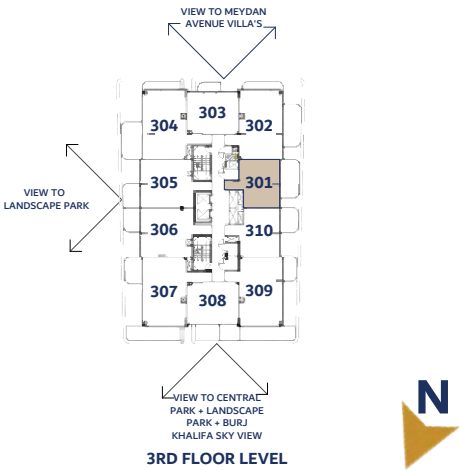


VÉDAIRE
RESIDENCES

ALLURE

ONE BEDROOM TYPE 1 (301)	
SUITE AREA	538.42 SQ. FT. / 50.02 SQ. MT.
BALCONY AREA	195.69 SQ. FT. / 18.18 SQ. MT.
TOTAL AREA	734.11 SQ. FT. / 68.20 SQ. MT.

KEY PLAN



ENTRY

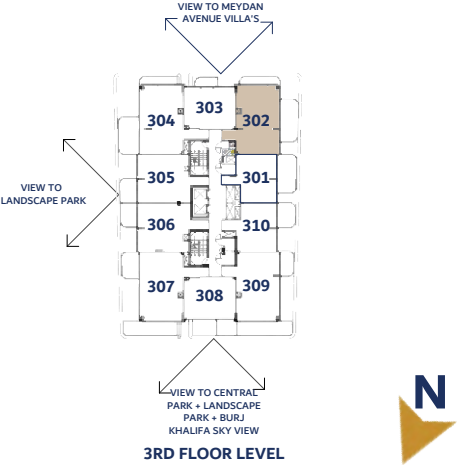


VÉDAIRE RESIDENCES

BRIO

TWO BEDROOM TYPE 1 (302)	
SUITE AREA	838.41 SQ.FT./ 77.89 SQ.MT.
BALCONY AREA	288.04 SQ.FT./ 26.76 SQ.MT.
TOTAL AREA	1,126.45 SQ.FT./ 104.65 SQ.MT.

KEY PLAN



Disclaimer:

1. All room dimensions are measured to structural elements and exclude wall finishes and construction tolerances. 2. All dimensions have been provided by our consultant architects. 3. All materials, dimensions and drawings are approximate. Information is subject to change without notice, at developer's absolute discretion. 4. Actual suite area may vary from the stated area. Drawings are not to scale. 5. The developer reserves the right to make revisions to the floor plans and any features, materials, dimensions, drawings, and amenities mentioned on this plan and in the brochure, at its absolute discretion, without notice and without any liability whatsoever. 6. Unit plans may exist in mirrored version. 7. For each unit type, unit sizes and details might be slightly different. Please refer to the sales and purchase agreement for the actual size of each specific unit. 8. All images used are for illustrative purposes only and do not represent the actual size, features, specifications, fittings, and furnishings.

ENTRY

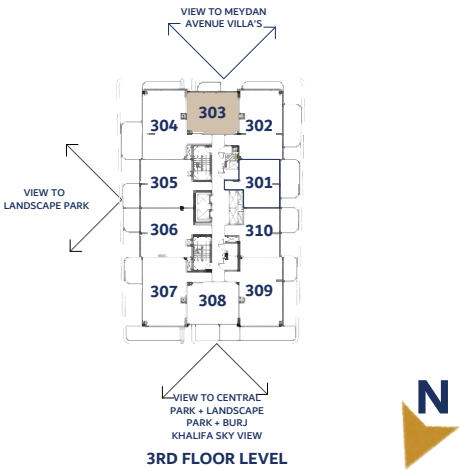


VÉDAIRE
RESIDENCES

GLEAM

ONE BEDROOM TYPE 2 (303)	
SUITE AREA	575.44 SQ.FT./53.46SQ.MT.
BALCONY AREA	60.06 SQ.FT./ 5.58 SQ.MT.
TOTAL AREA	635.51 SQ.FT./ 59.04 SQ.MT.

KEY PLAN



ELTON

Disclaimer:
1. All room dimensions are measured to structural elements and exclude wall finishes and construction tolerances. 2. All dimensions have been provided by our consultant architects. 3. All materials, dimensions and drawings are approximate. Information is subject to change without notice, at developer's absolute discretion. 4. Actual suite area may vary from the stated area. Drawings are not to scale. 5. The developer reserves the right to make revisions to the floor plans and any features, materials, dimensions, drawings, and amenities mentioned on this plan and in the brochure, at it's absolute discretion, without notice and without any liability whatsoever. 6. Unit plans may exist in mirrored version. 7. For each unit type, unit sizes and details might be slightly different. Please refer to the sales and purchase agreement for the actual size of each specific unit. 8. All images used are for illustrative purposes only and do not represent the actual size, features, specifications, fittings, and furnishings.

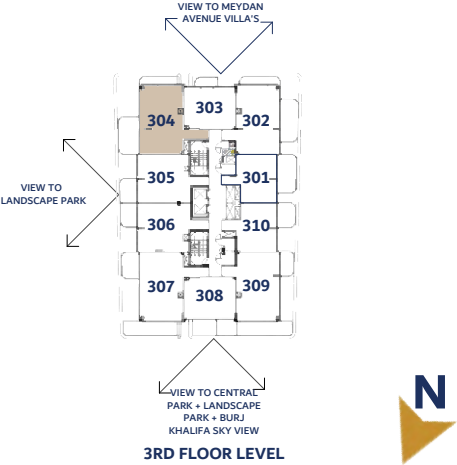


VÉDAIRE RESIDENCES

AURA

TWO BEDROOM TYPE 2 (304)	
SUITE AREA	871.24 SQ.FT./ 80.94SQ.MT.
BALCONY AREA	249.94SQ.FT./ 23.22 SQ.MT.
TOTAL AREA	1,121.18 SQ.FT./ 104.16 SQ.MT.

KEY PLAN



ELTON

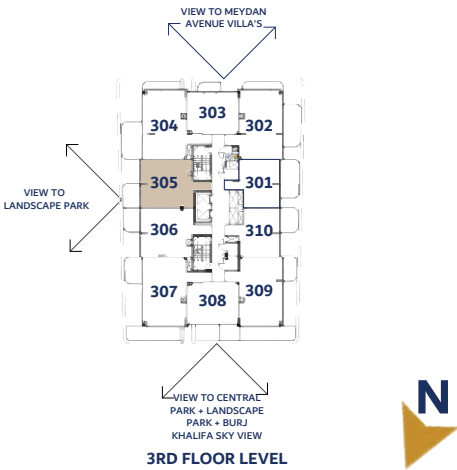
Disclaimer:
1. All room dimensions are measured to structural elements and exclude wall finishes and construction tolerances. 2. All dimensions have been provided by our consultant architects. 3. All materials, dimensions and drawings are approximate. Information is subject to change without notice, at developer's absolute discretion. 4. Actual suite area may vary from the stated area. Drawings are not to scale. 5. The developer reserves the right to make revisions to the floor plans and any features, materials, dimensions, drawings, and amenities mentioned on this plan and in the brochure, at its absolute discretion, without notice and without any liability whatsoever. 6. Unit plans may exist in mirrored version. 7. For each unit type, unit sizes and details might be slightly different. Please refer to the sales and purchase agreement for the actual size of each specific unit. 8. All images used are for illustrative purposes only and do not represent the actual size, features, specifications, fittings, and furnishings.

VÉDAIRE
RESIDENCES

OPALE

ONE BEDROOM TYPE 3 (305)	
SUITE AREA	725.39 SQ.FT./ 67.39 SQ.MT.
BALCONY AREA	103.87SQ.FT./ 9.65 SQ.MT.
TOTAL AREA	829.26 SQ.FT./ 77.04 SQ.MT.

KEY PLAN

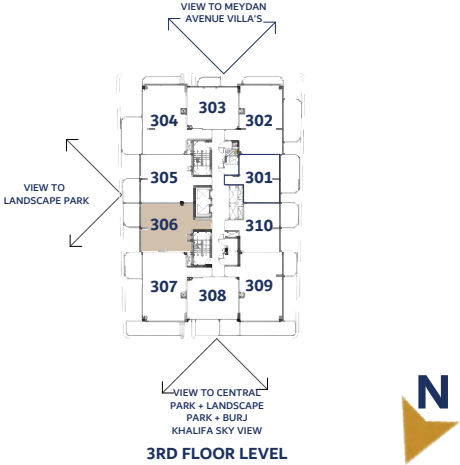


VÉDAIRE RESIDENCES

OPALE

ONE BEDROOM TYPE 4 (306)	
SUITE AREA	736.47 SQ.FT./ 68.42SQ.MT.
BALCONY AREA	97.41 SQ.FT./ 9.05 SQ.MT.
TOTAL AREA	833.88 SQ.FT./ 77.47 SQ.MT.

KEY PLAN

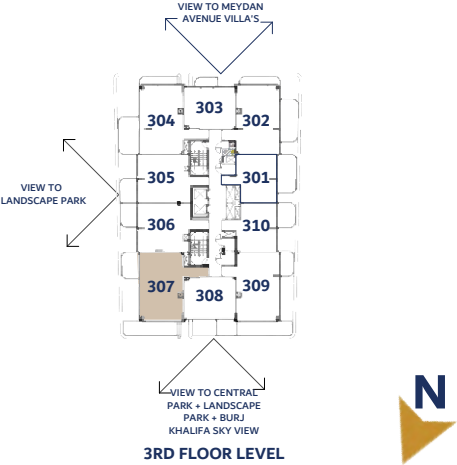


VÉDAIRE RESIDENCES

AURA

TWO BEDROOM TYPE 2 (307)	
SUITE AREA	871.35 SQ.FT./ 80.95 SQ.MT.
BALCONY AREA	286.86SQ.FT./ 26.65 SQ.MT.
TOTAL AREA	1,158.21 SQ.FT./ 107.60 SQ.MT.

KEY PLAN



ELTON

Disclaimer:
1. All room dimensions are measured to structural elements and exclude wall finishes and construction tolerances. 2. All dimensions have been provided by our consultant architects. 3. All materials, dimensions and drawings are approximate. Information is subject to change without notice, at developer's absolute discretion. 4. Actual suite area may vary from the stated area. Drawings are not to scale. 5. The developer reserves the right to make revisions to the floor plans and any features, materials, dimensions, drawings, and amenities mentioned on this plan and in the brochure, at it's absolute discretion, without notice and without any liability whatsoever. 6. Unit plans may exist in mirrored version. 7. For each unit type, unit sizes and details might be slightly different. Please refer to the sales and purchase agreement for the actual size of each specific unit. 8. All images used are for illustrative purposes only and do not represent the actual size, features, specifications, fittings, and furnishings.

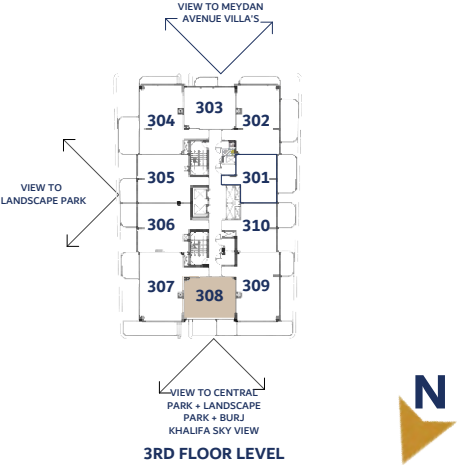


VÉDAIRE RESIDENCES

GLEAM

ONE BEDROOM TYPE 2 (308)	
SUITE AREA	576.84 SQ.FT./ 53.59 SQ.MT.
BALCONY AREA	79.98SQ.FT./ 7.43 SQ.MT.
TOTAL AREA	656.82 SQ.FT./ 61.02 SQ.MT.

KEY PLAN



Disclaimer:
1. All room dimensions are measured to structural elements and exclude wall finishes and construction tolerances. 2. All dimensions have been provided by our consultant architects. 3. All materials, dimensions and drawings are approximate. Information is subject to change without notice, at developer's absolute discretion. 4. Actual suite area may vary from the stated area. Drawings are not to scale. 5. The developer reserves the right to make revisions to the floor plans and any features, materials, dimensions, drawings, and amenities mentioned on this plan and in the brochure, at it's absolute discretion, without notice and without any liability whatsoever. 6. Unit plans may exist in mirrored version. 7. For each unit type, unit sizes and details might be slightly different. Please refer to the sales and purchase agreement for the actual size of each specific unit. 8. All images used are for illustrative purposes only and do not represent the actual size, features, specifications, fittings, and furnishings.

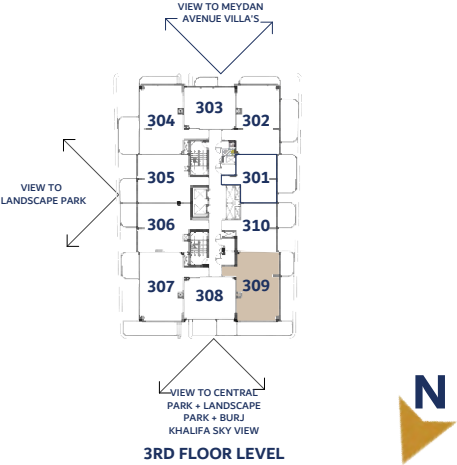


VÉDAIRE
RESIDENCES

BRIO

TWO BEDROOM TYPE 1 (309)	
SUITE AREA	838.73 SQ.FT./ 77.92 SQ.MT.
BALCONY AREA	314.52SQ.FT./ 29.22 SQ.MT.
TOTAL AREA	1,153.25 SQ.FT./ 107.14 SQ.MT.

KEY PLAN



Disclaimer:
1. All room dimensions are measured to structural elements and exclude wall finishes and construction tolerances. 2. All dimensions have been provided by our consultant architects. 3. All materials, dimensions and drawings are approximate. Information is subject to change without notice, at developer's absolute discretion. 4. Actual suite area may vary from the stated area. Drawings are not to scale. 5. The developer reserves the right to make revisions to the floor plans and any features, materials, dimensions, drawings, and amenities mentioned on this plan and in the brochure, at it's absolute discretion, without notice and without any liability whatsoever. 6. Unit plans may exist in mirrored version. 7. For each unit type, unit sizes and details might be slightly different. Please refer to the sales and purchase agreement for the actual size of each specific unit. 8. All images used are for illustrative purposes only and do not represent the actual size, features, specifications, fittings, and furnishings.

ENTRY

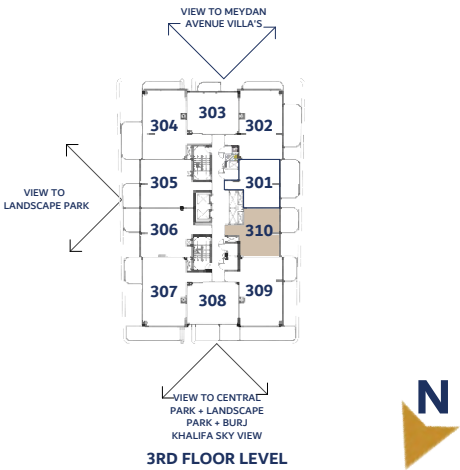


VÉDAIRE
RESIDENCES

ALLURE

ONE BEDROOM TYPE 1 (310)	
SUITE AREA	546.92 SQ.FT./ 50.81SQ.MT.
BALCONY AREA	116.79 SQ.FT./ 10.85 SQ.MT.
TOTAL AREA	663.71 SQ.FT./ 61.66 SQ.MT.

KEY PLAN



ENTRY



ELTON

Disclaimer:
1. All room dimensions are measured to structural elements and exclude wall finishes and construction tolerances. 2. All dimensions have been provided by our consultant architects. 3. All materials, dimensions and drawings are approximate. Information is subject to change without notice, at developer's absolute discretion. 4. Actual suite area may vary from the stated area. Drawings are not to scale. 5. The developer reserves the right to make revisions to the floor plans and any features, materials, dimensions, drawings, and amenities mentioned on this plan and in the brochure, at it's absolute discretion, without notice and without any liability whatsoever. 6. Unit plans may exist in mirrored version. 7. For each unit type, unit sizes and details might be slightly different. Please refer to the sales and purchase agreement for the actual size of each specific unit. 8. All images used are for illustrative purposes only and do not represent the actual size, features, specifications, fittings, and furnishings.

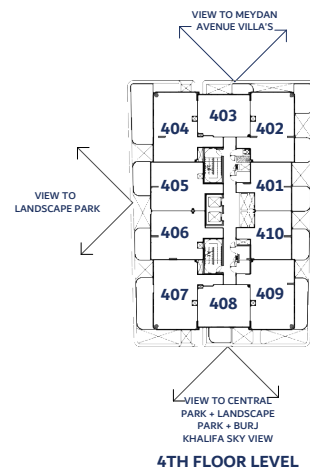


4TH FLOOR LEVEL

VÉDAIRE RESIDENCES

4TH FLOOR LEVEL

KEY PLAN



ELTON

Disclaimer:

1. All room dimensions are measured to structural elements and exclude wall finishes and construction tolerances. 2. All dimensions have been provided by our consultant architects. 3. All materials, dimensions and drawings are approximate. Information is subject to change without notice, at developer's absolute discretion. 4. Actual suite area may vary from the stated area. Drawings are not to scale. 5. The developer reserves the right to make revisions to the floor plans and any features, materials, dimensions, drawings, and amenities mentioned on this plan and in the brochure, at its absolute discretion, without notice and without any liability whatsoever. 6. Unit plans may exist in mirrored version. 7. For each unit type, unit sizes and details might be slightly different. Please refer to the sales and purchase agreement for the actual size of each specific unit. 8. All images used are for illustrative purposes only and do not represent the actual size, features, specifications, fittings, and furnishings.

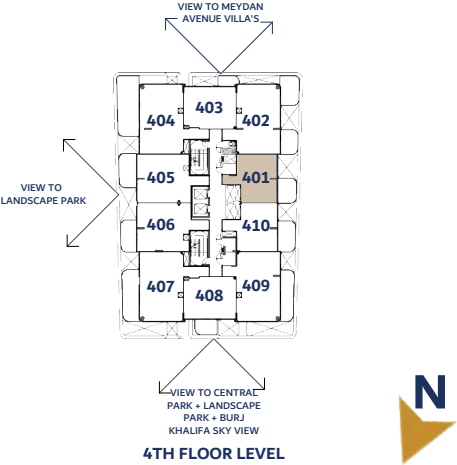


VÉDAIRE RESIDENCES

ALLURE

ONE BEDROOM TYPE 1 (401)	
SUITE AREA	539.60 SQ. FT. / 50.13 SQ. MT.
BALCONY AREA	120.88 SQ. FT. / 11.23 SQ. MT.
TOTAL AREA	660.48 SQ. FT. / 61.36 SQ. MT.

KEY PLAN



ENTRY



ELTON

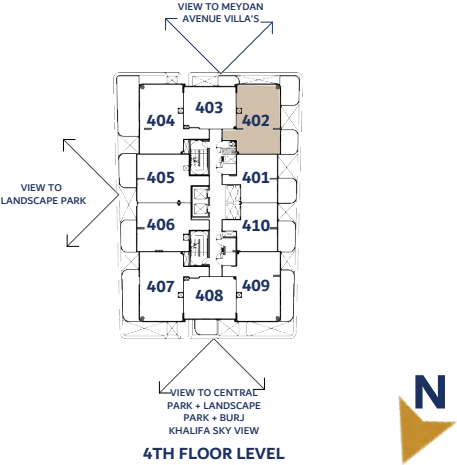
Disclaimer:
1. All room dimensions are measured to structural elements and exclude wall finishes and construction tolerances. 2. All dimensions have been provided by our consultant architects. 3. All materials, dimensions and drawings are approximate. Information is subject to change without notice, at developer's absolute discretion. 4. Actual suite area may vary from the stated area. Drawings are not to scale. 5. The developer reserves the right to make revisions to the floor plans and any features, materials, dimensions, drawings, and amenities mentioned on this plan and in the brochure, at it's absolute discretion, without notice and without any liability whatsoever. 6. Unit plans may exist in mirrored version. 7. For each unit type, unit sizes and details might be slightly different. Please refer to the sales and purchase agreement for the actual size of each specific unit. 8. All images used are for illustrative purposes only and do not represent the actual size, features, specifications, fittings, and furnishings.

VÉDAIRE RESIDENCES

BRIO

TWO BEDROOM TYPE 1 (402)	
SUITE AREA	839.70 SQ.FT./ 78.01 SQ.MT.
BALCONY AREA	265.87 SQ.FT./ 24.70 SQ.MT.
TOTAL AREA	1,105.57 SQ.FT./ 102.71 SQ.MT.

KEY PLAN



ENTRY



ELTON

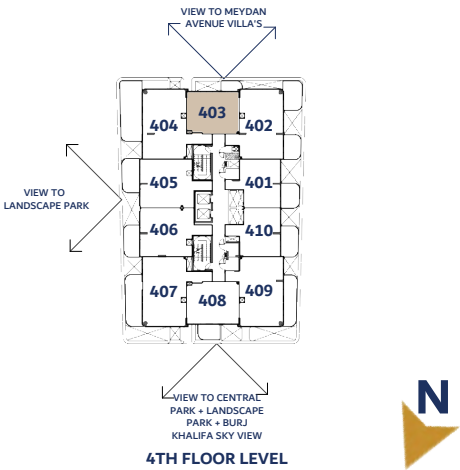
Disclaimer:
1. All room dimensions are measured to structural elements and exclude wall finishes and construction tolerances. 2. All dimensions have been provided by our consultant architects. 3. All materials, dimensions and drawings are approximate. Information is subject to change without notice, at developer's absolute discretion. 4. Actual suite area may vary from the stated area. Drawings are not to scale. 5. The developer reserves the right to make revisions to the floor plans and any features, materials, dimensions, drawings, and amenities mentioned on this plan and in the brochure, at its absolute discretion, without notice and without any liability whatsoever. 6. Unit plans may exist in mirrored version. 7. For each unit type, unit sizes and details might be slightly different. Please refer to the sales and purchase agreement for the actual size of each specific unit. 8. All images used are for illustrative purposes only and do not represent the actual size, features, specifications, fittings, and furnishings.

VÉDAIRE
RESIDENCES

GLEAM

ONE BEDROOM TYPE 2 (403)	
SUITE AREA	576.74 SQ.FT./ 53.58 SQ.MT.
BALCONY AREA	57.26 SQ.FT./ 5.32 SQ.MT.
TOTAL AREA	634.00 SQ.FT./ 58.90 SQ.MT.

KEY PLAN



Disclaimer:
1. All room dimensions are measured to structural elements and exclude wall finishes and construction tolerances. 2. All dimensions have been provided by our consultant architects. 3. All materials, dimensions and drawings are approximate. Information is subject to change without notice, at developer's absolute discretion. 4. Actual suite area may vary from the stated area. Drawings are not to scale. 5. The developer reserves the right to make revisions to the floor plans and any features, materials, dimensions, drawings, and amenities mentioned on this plan and in the brochure, at its absolute discretion, without notice and without any liability whatsoever. 6. Unit plans may exist in mirrored version. 7. For each unit type, unit sizes and details might be slightly different. Please refer to the sales and purchase agreement for the actual size of each specific unit. 8. All images used are for illustrative purposes only and do not represent the actual size, features, specifications, fittings, and furnishings.

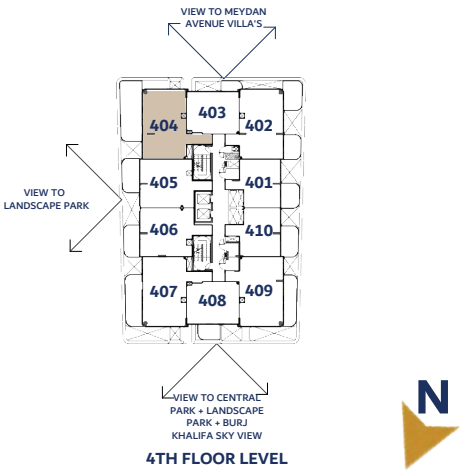


VÉDAIRE
RESIDENCES

AURA

TWO BEDROOM TYPE 2 (404)	
SUITE AREA	871.13 SQ.FT. / 80.93 SQ.MT.
BALCONY AREA	339.50 SQ.FT. / 31.54 SQ.MT.
TOTAL AREA	1,210.63 SQ.FT. / 112.47 SQ.MT.

KEY PLAN



Disclaimer:
1. All room dimensions are measured to structural elements and exclude wall finishes and construction tolerances. 2. All dimensions have been provided by our consultant architects. 3. All materials, dimensions and drawings are approximate. Information is subject to change without notice, at developer's absolute discretion. 4. Actual suite area may vary from the stated area. Drawings are not to scale. 5. The developer reserves the right to make revisions to the floor plans and any features, materials, dimensions, drawings, and amenities mentioned on this plan and in the brochure, at its absolute discretion, without notice and without any liability whatsoever. 6. Unit plans may exist in mirrored version. 7. For each unit type, unit sizes and details might be slightly different. Please refer to the sales and purchase agreement for the actual size of each specific unit. 8. All images used are for illustrative purposes only and do not represent the actual size, features, specifications, fittings, and furnishings.

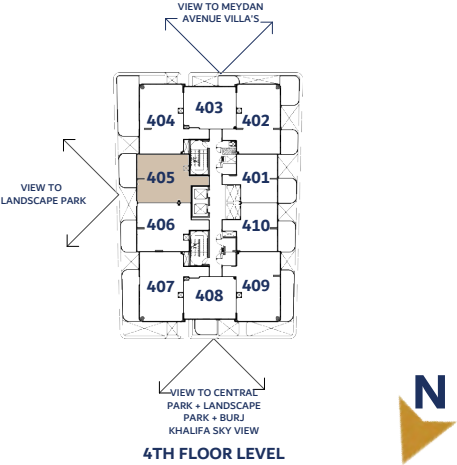


VÉDAIRE RESIDENCES

OPALE

ONE BEDROOM TYPE 3 (405)	
SUITE AREA	725.39 SQ.FT./ 67.39 SQ.MT.
BALCONY AREA	145.96 SQ.FT./ 13.56 SQ.MT.
TOTAL AREA	871.35 SQ.FT./ 80.95 SQ.MT.

KEY PLAN



ELTON

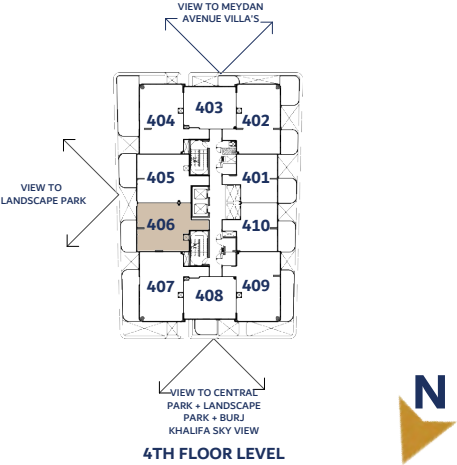
Disclaimer:
1. All room dimensions are measured to structural elements and exclude wall finishes and construction tolerances. 2. All dimensions have been provided by our consultant architects. 3. All materials, dimensions and drawings are approximate. Information is subject to change without notice, at developer's absolute discretion. 4. Actual suite area may vary from the stated area. Drawings are not to scale. 5. The developer reserves the right to make revisions to the floor plans and any features, materials, dimensions, drawings, and amenities mentioned on this plan and in the brochure, at its absolute discretion, without notice and without any liability whatsoever. 6. Unit plans may exist in mirrored version. 7. For each unit type, unit sizes and details might be slightly different. Please refer to the sales and purchase agreement for the actual size of each specific unit. 8. All images used are for illustrative purposes only and do not represent the actual size, features, specifications, fittings, and furnishings.

VÉDAIRE RESIDENCES

OPALE

ONE BEDROOM TYPE 4 (406)	
SUITE AREA	734.64 SQ.FT./ 68.25 SQ.MT.
BALCONY AREA	124.43 SQ.FT./ 11.56 SQ.MT.
TOTAL AREA	859.07 SQ.FT./ 79.81 SQ.MT.

KEY PLAN



ELTON

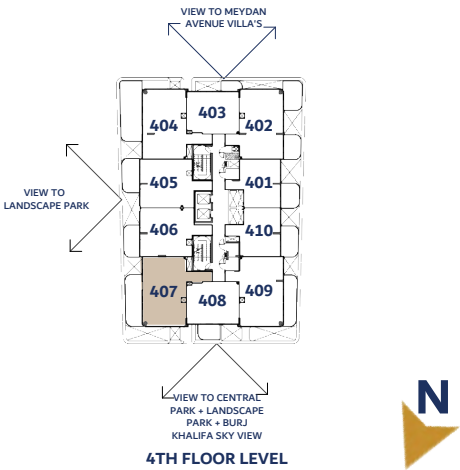
Disclaimer:
1. All room dimensions are measured to structural elements and exclude wall finishes and construction tolerances. 2. All dimensions have been provided by our consultant architects. 3. All materials, dimensions and drawings are approximate. Information is subject to change without notice, at developer's absolute discretion. 4. Actual suite area may vary from the stated area. Drawings are not to scale. 5. The developer reserves the right to make revisions to the floor plans and any features, materials, dimensions, drawings, and amenities mentioned on this plan and in the brochure, at its absolute discretion, without notice and without any liability whatsoever. 6. Unit plans may exist in mirrored version. 7. For each unit type, unit sizes and details might be slightly different. Please refer to the sales and purchase agreement for the actual size of each specific unit. 8. All images used are for illustrative purposes only and do not represent the actual size, features, specifications, fittings, and furnishings.

VÉDAIRE
RESIDENCES

AURA

TWO BEDROOM TYPE 2 (407)	
SUITE AREA	869.95 SQ.FT./ 80.82 SQ.MT.
BALCONY AREA	212.05 SQ.FT./ 19.70 SQ.MT.
TOTAL AREA	1,082.00 SQ.FT./ 100.52 SQ.MT.

KEY PLAN

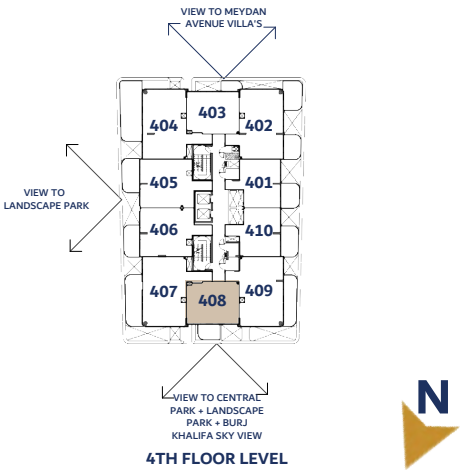


VÉDAIRE RESIDENCES

GLEAM

ONE BEDROOM TYPE 2 (408)	
SUITE AREA	575.66 SQ.FT./ 53.48 SQ.MT.
BALCONY AREA	89.34 SQ.FT./ 8.30 SQ.MT.T
TOTAL AREA	665.00 SQ.FT./ 61.78 SQ.MT.

KEY PLAN



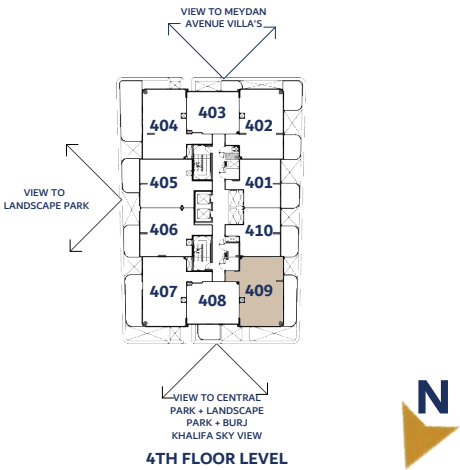
Disclaimer:
1. All room dimensions are measured to structural elements and exclude wall finishes and construction tolerances. 2. All dimensions have been provided by our consultant architects. 3. All materials, dimensions and drawings are approximate. Information is subject to change without notice, at developer's absolute discretion. 4. Actual suite area may vary from the stated area. Drawings are not to scale. 5. The developer reserves the right to make revisions to the floor plans and any features, materials, dimensions, drawings, and amenities mentioned on this plan and in the brochure, at it's absolute discretion, without notice and without any liability whatsoever. 6. Unit plans may exist in mirrored version. 7. For each unit type, unit sizes and details might be slightly different. Please refer to the sales and purchase agreement for the actual size of each specific unit. 8. All images used are for illustrative purposes only and do not represent the actual size, features, specifications, fittings, and furnishings.

VÉDAIRE
RESIDENCES

BRIO

TWO BEDROOM TYPE 1 (409)	
SUITE AREA	837.44 SQ.FT./ 77.80 SQ.MT.
BALCONY AREA	178.79 SQ.FT./ 16.61 SQ.MT.
TOTAL AREA	1,016.23 SQ.FT./ 94.41 SQ.MT.

KEY PLAN



ELTON

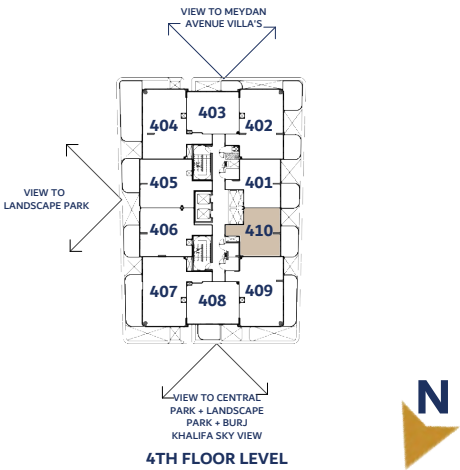
Disclaimer:
1. All room dimensions are measured to structural elements and exclude wall finishes and construction tolerances. 2. All dimensions have been provided by our consultant architects. 3. All materials, dimensions and drawings are approximate. Information is subject to change without notice, at developer's absolute discretion. 4. Actual suite area may vary from the stated area. Drawings are not to scale. 5. The developer reserves the right to make revisions to the floor plans and any features, materials, dimensions, drawings, and amenities mentioned on this plan and in the brochure, at it's absolute discretion, without notice and without any liability whatsoever. 6. Unit plans may exist in mirrored version. 7. For each unit type, unit sizes and details might be slightly different. Please refer to the sales and purchase agreement for the actual size of each specific unit. 8. All images used are for illustrative purposes only and do not represent the actual size, features, specifications, fittings, and furnishings.

VÉDAIRE
RESIDENCES

ALLURE

ONE BEDROOM TYPE 1 (410)	
SUITE AREA	545.52 SQ. FT. / 50.68 SQ. MT.
BALCONY AREA	142.08 SQ. FT. / 13.20 SQ. MT.
TOTAL AREA	687.60 SQ. FT. / 63.88 SQ. MT.

KEY PLAN



ENTRY



ELTON

Disclaimer:
1. All room dimensions are measured to structural elements and exclude wall finishes and construction tolerances. 2. All dimensions have been provided by our consultant architects. 3. All materials, dimensions and drawings are approximate. Information is subject to change without notice, at developer's absolute discretion. 4. Actual suite area may vary from the stated area. Drawings are not to scale. 5. The developer reserves the right to make revisions to the floor plans and any features, materials, dimensions, drawings, and amenities mentioned on this plan and in the brochure, at it's absolute discretion, without notice and without any liability whatsoever. 6. Unit plans may exist in mirrored version. 7. For each unit type, unit sizes and details might be slightly different. Please refer to the sales and purchase agreement for the actual size of each specific unit. 8. All images used are for illustrative purposes only and do not represent the actual size, features, specifications, fittings, and furnishings.

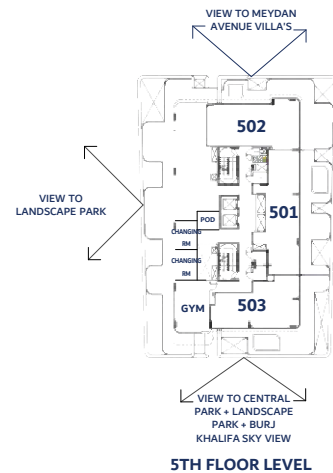


5TH FLOOR LEVEL

VÉDAIRE RESIDENCES

5TH FLOOR LEVEL

KEY PLAN



ELTON

Disclaimer:

1. All room dimensions are measured to structural elements and exclude wall finishes and construction tolerances. 2. All dimensions have been provided by our consultant architects. 3. All materials, dimensions and drawings are approximate. Information is subject to change without notice, at developer's absolute discretion. 4. Actual suite area may vary from the stated area. Drawings are not to scale. 5. The developer reserves the right to make revisions to the floor plans and any features, materials, dimensions, drawings, and amenities mentioned on this plan and in the brochure, at its absolute discretion, without notice and without any liability whatsoever. 6. Unit plans may exist in mirrored version. 7. For each unit type, unit sizes and details might be slightly different. Please refer to the sales and purchase agreement for the actual size of each specific unit. 8. All images used are for illustrative purposes only and do not represent the actual size, features, specifications, fittings, and furnishings.

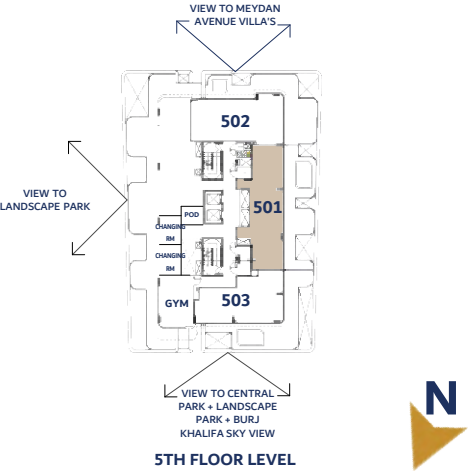


VÉDAIRE RESIDENCES

BLISS

TWO BEDROOM TYPE 3 (501)	
SUITE AREA	1,064.34SQ.FT./ 98.88 SQ.MT.
BALCONY AREA	663.06 SQ.FT./ 61.60 SQ.MT.
TOTAL AREA	1,727.41 SQ.FT./ 160.48 SQ.MT.

KEY PLAN



ELTON

Disclaimer:
1. All room dimensions are measured to structural elements and exclude wall finishes and construction tolerances. 2. All dimensions have been provided by our consultant architects. 3. All materials, dimensions and drawings are approximate. Information is subject to change without notice, at developer's absolute discretion. 4. Actual suite area may vary from the stated area. Drawings are not to scale. 5. The developer reserves the right to make revisions to the floor plans and any features, materials, dimensions, drawings, and amenities mentioned on this plan and in the brochure, at it's absolute discretion, without notice and without any liability whatsoever. 6. Unit plans may exist in mirrored version. 7. For each unit type, unit sizes and details might be slightly different. Please refer to the sales and purchase agreement for the actual size of each specific unit. 8. All images used are for illustrative purposes only and do not represent the actual size, features, specifications, fittings, and furnishings.

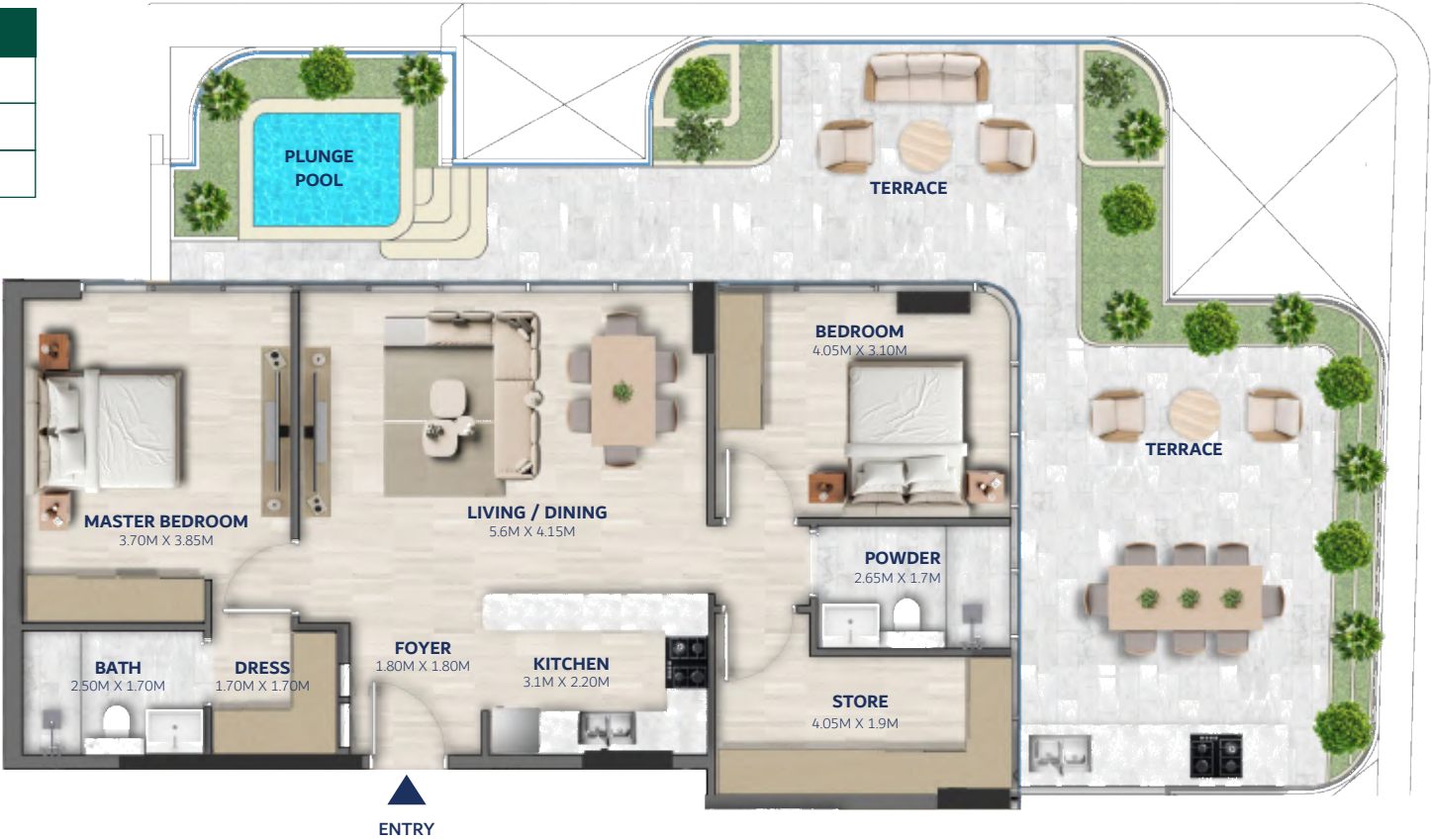
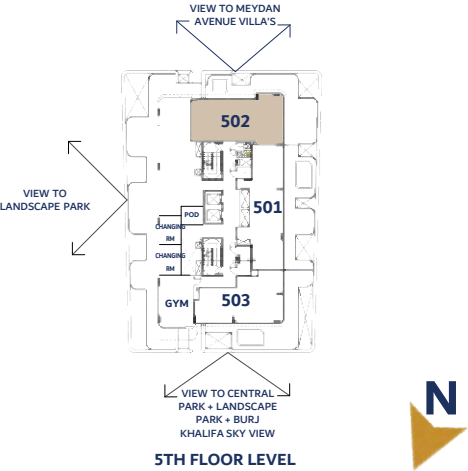


VÉDAIRE RESIDENCES

VESTA

TWO BEDROOM TYPE 4 (502)	
SUITE AREA	1,001.05SQ.FT./ 93.00 SQ.MT.
BALCONY AREA	777.38 SQ.FT./ 72.22 SQ.MT.
TOTAL AREA	1,778.43 SQ.FT./ 165.22 SQ.MT.

KEY PLAN



ELTON

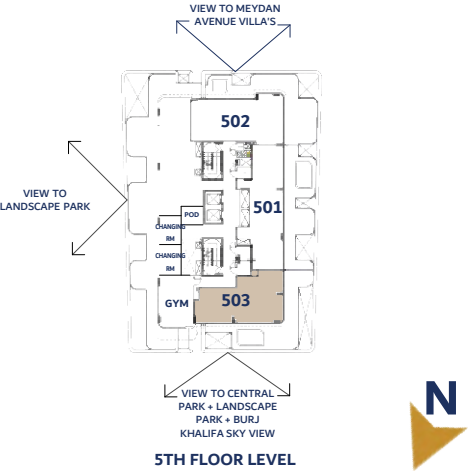
Disclaimer:
1. All room dimensions are measured to structural elements and exclude wall finishes and construction tolerances. 2. All dimensions have been provided by our consultant architects. 3. All materials, dimensions and drawings are approximate. Information is subject to change without notice, at developer's absolute discretion. 4. Actual suite area may vary from the stated area. Drawings are not to scale. 5. The developer reserves the right to make revisions to the floor plans and any features, materials, dimensions, drawings, and amenities mentioned on this plan and in the brochure, at it's absolute discretion, without notice and without any liability whatsoever. 6. Unit plans may exist in mirrored version. 7. For each unit type, unit sizes and details might be slightly different. Please refer to the sales and purchase agreement for the actual size of each specific unit. 8. All images used are for illustrative purposes only and do not represent the actual size, features, specifications, fittings, and furnishings.

VÉDAIRE
RESIDENCES

ZEAL

TWO BEDROOM TYPE 5 (503)	
SUITE AREA	904.50 SQ.FT./ 84.03 SQ.MT.
BALCONY AREA	758.11 SQ.FT./ 70.43 SQ.MT.
TOTAL AREA	1,662.61 SQ.FT./ 154.46 SQ.MT.

KEY PLAN



Disclaimer:

1. All room dimensions are measured to structural elements and exclude wall finishes and construction tolerances. 2. All dimensions have been provided by our consultant architects. 3. All materials, dimensions and drawings are approximate. Information is subject to change without notice, at developer's absolute discretion. 4. Actual suite area may vary from the stated area. Drawings are not to scale. 5. The developer reserves the right to make revisions to the floor plans and any features, materials, dimensions, drawings, and amenities mentioned on this plan and in the brochure, at its absolute discretion, without notice and without any liability whatsoever. 6. Unit plans may exist in mirrored version. 7. For each unit type, unit sizes and details might be slightly different. Please refer to the sales and purchase agreement for the actual size of each specific unit. 8. All images used are for illustrative purposes only and do not represent the actual size, features, specifications, fittings, and furnishings.



ROOF FLOOR LEVEL

VÉDAIRE RESIDENCES



ELTON

Disclaimer:
1. All room dimensions are measured to structural elements and exclude wall finishes and construction tolerances. 2. All dimensions have been provided by our consultant architects. 3. All materials, dimensions and drawings are approximate. Information is subject to change without notice, at developer's absolute discretion. 4. Actual suite area may vary from the stated area. Drawings are not to scale. 5. The developer reserves the right to make revisions to the floor plans and any features, materials, dimensions, drawings, and amenities mentioned on this plan and in the brochure, at it's absolute discretion, without notice and without any liability whatsoever. 6. Unit plans may exist in mirrored version. 7. For each unit type, unit sizes and details might be slightly different. Please refer to the sales and purchase agreement for the actual size of each specific unit. 8. All images used are for illustrative purposes only and do not represent the actual size, features, specifications, fittings, and furnishings.

